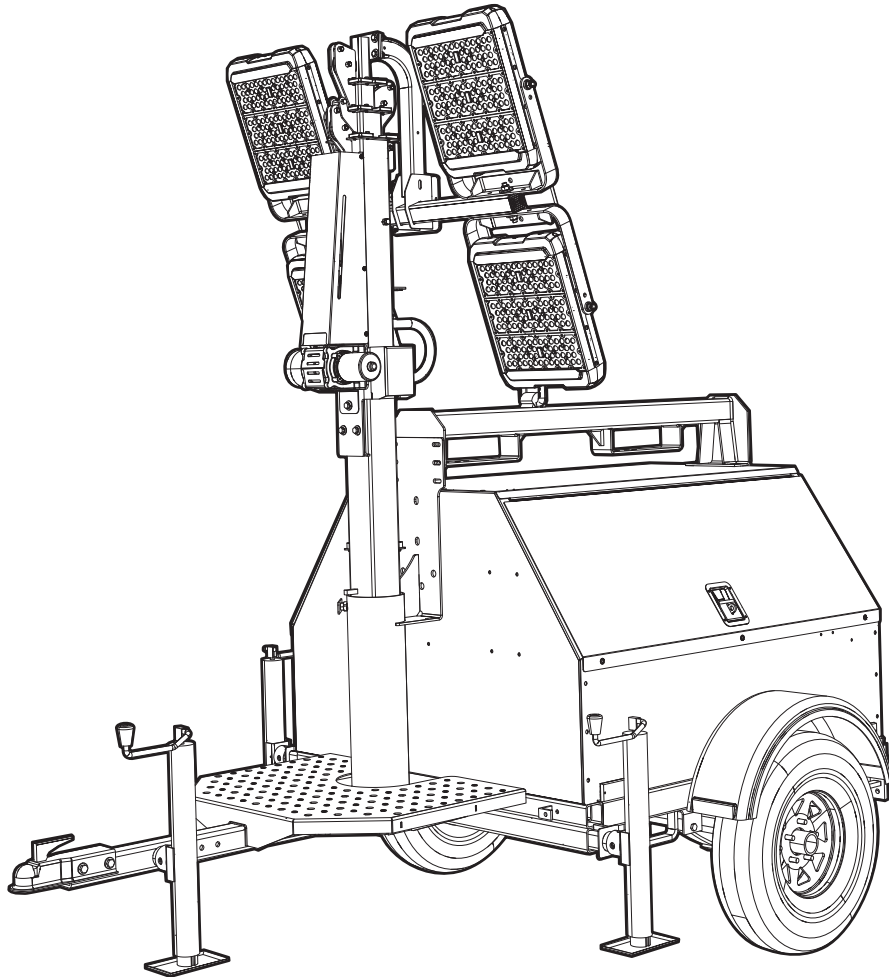


MLT4060-80MKV-LED

DIESEL LIGHT TOWER PARTS MANUAL



03798

MODEL NUMBER: _____

SERIAL NUMBER: _____

DATE PURCHASED: _____

SAVE THIS MANUAL FOR FUTURE REFERENCE

 **WARNING**

CANCER AND REPRODUCTIVE HARM

www.P65Warnings.ca.gov.

(000393a)

 **WARNING**

Breathing diesel engine exhaust exposes you to chemicals known to the State of California to cause cancer and birth defects or other reproductive harm.

- Always start and operate the engine in a well-ventilated area.
- If in an enclosed area, vent the exhaust to the outside.
- Do not modify or tamper with the exhaust system.
- Do not idle the engine except as necessary.

For more information go to

www.P65Warnings.ca.gov/diesel.

(000394)

Introduction

This parts manual was prepared based on the information available at the time of publication and is subject to change without notice. Generac Mobile reserves the right to change parts at any time. To check whether a revised parts manual is available, contact Generac Mobile.

DO NOT MODIFY or use this equipment for any application other than which it was designed for. To keep your equipment fully operational, it is suggested you maintain a stock of commonly used maintenance or service parts. A recommended spare parts list can be found in the back of this manual. To order service parts, please go to www.generacmobileproducts.com or call Generac Mobile.



WARNING

Consult Manual. Read and understand manual completely before using product. Failure to completely understand manual and product could result in death or serious injury. (000100a)

WARNING

Environmental Hazard. Always recycle batteries at an official recycling center in accordance with all local laws and regulations. Failure to do so could result in environmental damage, death, or serious injury. (000228)

GENERAC MOBILE PRODUCTS LLC

215 Power Drive • Berlin, WI 54923 U.S.A.

Phone: 920-361-4442

FAX: 920-361-4416

Toll Free: 1-800-926-9768

www.generacmobileproducts.com

For technical or parts QUESTIONS, contact Generac Mobile Technical Service at 1-800-926-9768.

Engine Make: _____

Engine Serial Number: _____

Engine Model Number: _____

This Page Intentionally Left Blank

Table of Contents

Introduction	iii
Unit Decals - Exterior	2
Unit Decals - Left Side Interior	4
Unit Decals - Right Side Interior	6
Mast, Junction Box and Lights to Unit	8
LED Light Assembly	10
Mast Junction Box Assembly	12
Mast Assembly	14
Mast Assembly - Bottom Post	16
Roof and Doors to Unit	18
Front, Rear, and Side Panels to Unit	20
Control Box to Unit	22
Control Box Assembly- Analog	24
Control Panel Assembly - Analog	26
Control Box Assembly - Power Zone (If Equipped)	28
Control Panel Assembly - Power Zone (If Equipped)	30
Cooling System Assembly	32
Engine and Generator to Unit	34
Engine Assembly - Mitsubishi Left Side	36
Engine Assembly - Mitsubishi Right Side	38
Engine Assembly - Kubota Left Side	40
Engine Assembly - Kubota Right Side	42
Generator Assembly	44
Fuel Tank to Unit	46
Trailer Assembly	48
Trailer - Hitch Options	50
Axle Assembly	52
Recommended Spare Parts - Engine and Service Kits - Mitsubishi	54
Recommended Spare Parts - Engine and Service Kits - Kubota	56
Recommended Spare Parts - Electrical	58
Recommended Spare Parts - Misc	60

Parts Manual Instructions

Product illustrations are only representations. Products supplied may vary from the illustrations in this parts manual. Parts not shown in the illustration are indicated by a double dash (--) in the item column.

Please be prepared to provide the following information when ordering replacement parts: model number, serial number (on unit serial tag), part number, purchase order number (if applicable), shipping address, shipping method.

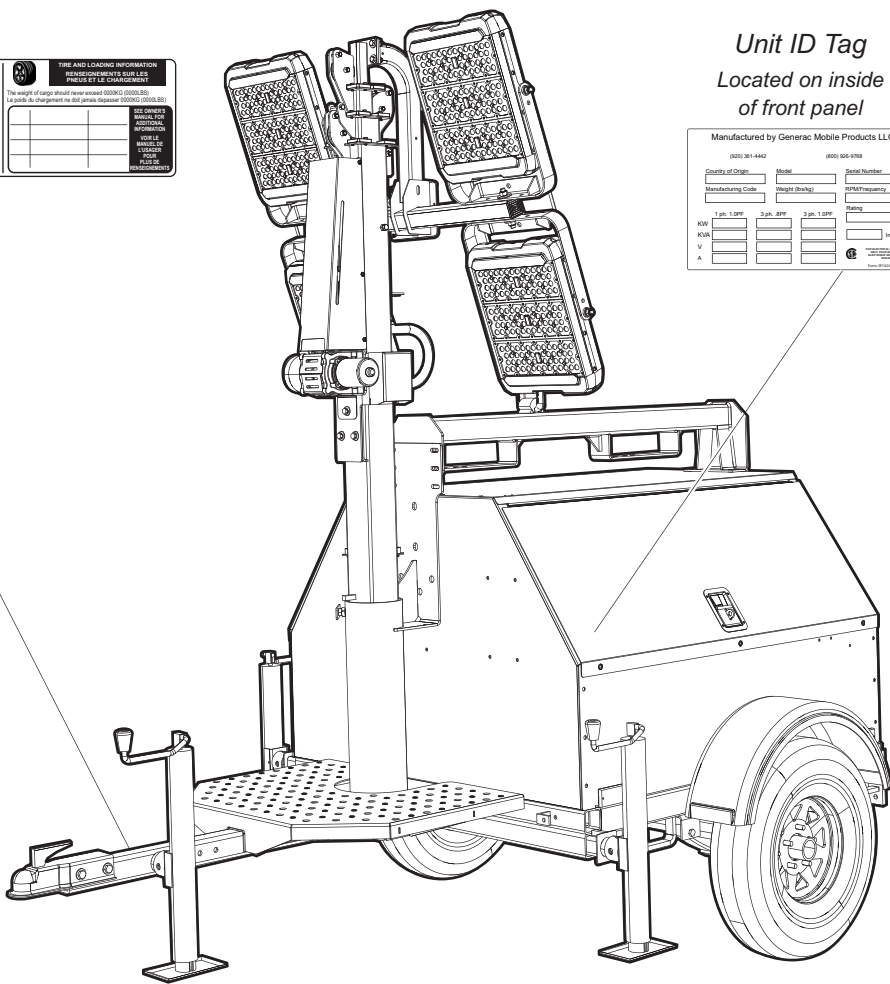
Refer to the illustration below to locate the unit ID tag and Vehicle Identification Number (VIN) tag on the unit. Important information, such as the unit serial number, model number, VIN and tire loading information are found on these tags. Record the information from these tags so it is available if the tags are lost or damaged. When ordering parts or requesting assistance, you may be asked to provide this information.

VIN Tag

MANUFACTURED BY FABRIQUE PAR: Generac Mobile Products LLC		COLD INF. PRESSES / DATE: 000000													
GOVERNMENT: 000000000000		PRESSE DE: 000000000000													
SACHR / PNEU	TIRE / PNEU	SEM / JANTE													
EACH AXLE															
<table border="1"> <tr> <td></td> <td></td> <td></td> <td></td> </tr> <tr> <td></td> <td></td> <td></td> <td></td> </tr> <tr> <td></td> <td></td> <td></td> <td></td> </tr> </table>															
TIRE AND LOADING INFORMATION: PNEUS CONFORMES TO SUEDES PNEUS ET LE CHARGEMENT The weight of each wheel must exceed 100000 (10000.00) LBS. Le poids de chargement de BIL jante dépasser 100000 (10000.00) LBS.															
SEE OWNER MANUAL FOR ADDITIONAL INFORMATION: MODELLE DE SUEDES TIRE PNEUS ET LE CHARGEMENT															
VIN: 000000000000000000		MODEL: XXX000													
		TYPE: TRAILER													

Unit ID Tag
Located on inside of front panel

Country of Origin			Model	Serial Number
Manufacturing Code			Height (Inches)	Prod Frequency
1 ph. 1.00P	2 ph. 80P	3 ph. 1.00P	Rating	
RW			Vol. Class	
RV				
V				
A				



03797

UNIT DECALS - EXTERIOR

1

ALWAYS KEEP TENSION ON CABLES! SLACK MAY CAUSE CABLE DAMAGE AND EXCESSIVE WEAR!
 KABEL STETS GESpanNT HALTEN! EIN DURCHHÄNGEN DES KABELS KANN ZU BESCHÄDIGUNGEN UND FRÜHZEITIGER ABNUTZUNG FÜHREN!
 ¡MANTENGA SIEMPRE EL CABLE TENSIONADO! ¡LA FALTA DE TENSION EN EL CABLE PUEDE CAUSARLE DAÑOS Y DESGASTE EXCESIVO!
 LES CÂBLES DOIVENT ÊTRE TOUJOURS TENDUS! UN CÂBLE AVEC DU MOU PEUT SE DÉTÉRIORER ET S'USER RAPIDEMENT!

1

1

1

1

2

3

	<p>TOWING INSTRUCTIONS</p> <ol style="list-style-type: none"> 1. Read operator's manual. 2. Use hitch rated for trailer's "gross vehicle weight rating". 3. Securely attach trailer to tow vehicle. 4. Attach safety chains using a cross pattern. 5. Attach breakdown chain to vehicle. 6. Check trailer lights. 	<p>INSTRUCTIONS DE REMORQUAGE</p> <ol style="list-style-type: none"> 1. Lire le manuel de l'utilisateur. 2. Utiliser un attelage convenant au poids nominal brut de la remorque. 3. Arrimer solidement la remorque au véhicule tracteur. 4. Poser les chaînes de sécurité en les croisant. 5. Fixer la chaîne de remorquage au véhicule. 6. Vérifier les feux de la remorque. 	<p>INSTRUCCIONES PARA REMOLQUE</p> <ol style="list-style-type: none"> 1. Lea el manual del operador. 2. Use un enganche adecuado para la "capacidad de peso bruto del vehículo" del remolque. 3. Enganche firmemente el remolque al vehículo de remolque. 4. Enganche las cadenas de seguridad en forma cruzada. 5. Enganche al vehículo la cadena de emergencia para averías. 6. Revise las luces del remolque.

1

1

1

1

1

1

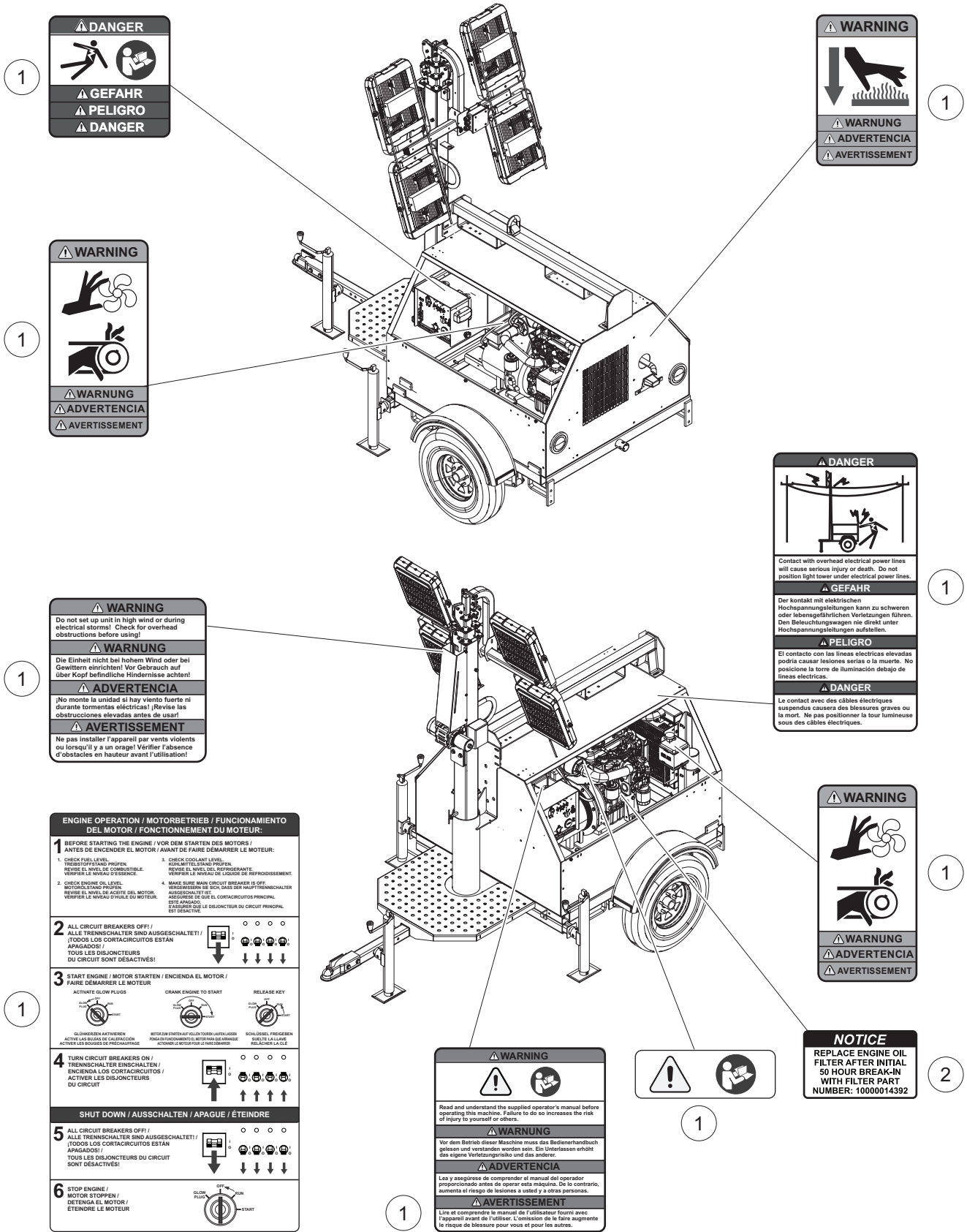
1

03796

UNIT DECALS - EXTERIOR

Item	Part No.	Qty	Description	Notes
1	A0002871539	1	DECAL, SAFETY	
2	12142	1	DECAL, GROUND	
3	A0004245896	1	DECAL MLT TOWING INSTR WITH 65MPH	

UNIT DECALS - LEFT SIDE INTERIOR



⚠ DANGER

⚠ GEFAHR

⚠ PELIGRO

⚠ DANGER

⚠ WARNING

⚠ WARNUNG

⚠ ADVERTENCIA

⚠ AVERTISSEMENT

⚠ WARNING

⚠ WARNUNG

⚠ ADVERTENCIA

⚠ AVERTISSEMENT

⚠ WARNING

Do not set up unit in high wind or during electrical storms! Check for overhead obstructions before using!

⚠ WARNUNG

Die Einheit nicht bei hohem Wind oder bei Gewittern einrichten! Vor Gebrauch auf über Kopf befindliche Hindernisse achten!

⚠ ADVERTENCIA

No monte la unidad si hay viento fuerte ni durante tormentas eléctricas! Revisar las obstrucciones elevadas antes de usar!

⚠ AVERTISSEMENT

Ne pas installer l'appareil par vents violents ou lorsqu'il y a un orage! Vérifier l'absence d'obstacles en hauteur avant l'utilisation!

⚠ DANGER

Contact with overhead electrical power lines will cause serious injury or death. Do not position light tower under electrical power lines.

⚠ GEFAHR

Der Kontakt mit elektrischen Hochspannungsleitungen kann zu schweren oder lebensgefährlichen Verletzungen führen. Den Beleuchtungswagen nie direkt unter Hochspannungsleitungen aufstellen.

⚠ PELIGRO

El contacto con las líneas eléctricas elevadas podría causar lesiones serias o la muerte. No posicione la torre de iluminación debajo de líneas eléctricas.

⚠ DANGER

Le contact avec des câbles électriques suspendus causera des blessures graves ou la mort. Ne pas positionner la tour lumineuse sous des câbles électriques.

ENGINE OPERATION / MOTORBETRIEB / FUNCIONAMIENTO DEL MOTOR / FONCTIONNEMENT DU MOTEUR:

1 BEFORE STARTING THE ENGINE / VOR DEM STARTEN DES MOTORS / ANTES DE ENCENDER EL MOTOR / AVANT DE FAIRE DÉMARRER LE MOTEUR:

1. CHECK FUEL LEVEL. TREIBSTOFFSTAND PRÜFEN. REVISAR EL NIVEL DE COMBUSTIBLE. VÉRIFIER LE NIVEAU D'ESSENCE.

2. CHECK ENGINE OIL LEVEL. MOTORÖLSTAND PRÜFEN. REVISAR EL NIVEL DE ACEITE DEL MOTOR. VÉRIFIER LE NIVEAU D'HUILE DU MOTEUR.

3. CHECK COOLANT LEVEL. KÜHMITTELSTAND PRÜFEN. REVISAR EL NIVEL DEL REFRIGERANTE. VÉRIFIER LE NIVEAU DE LIQUIDE DE REFRIGÉREMENT.

4. MAKE SURE MAIN CIRCUIT BREAKER IS OFF. HAUPTSTROMSCHALTER AB. CHECK DER HAUPTSTROMSCHALTER. VERIFIEZ QUE LE DISJONCTEUR PRINCIPAL EST DÉACTIVÉ.

2 ALL CIRCUIT BREAKERS OFF! / ALLE TRENSCHALTER SIND AUSGESCHALTET! / TODOS LOS CORTACIRCUITOS ESTÁN APAGADOS! / TOUS LES DISJONCTEURS DU CIRCUIT SONT DÉACTIVÉS!

3 START ENGINE / MOTOR STARTEN / ENCIENDA EL MOTOR / FAIRE DÉMARRER LE MOTEUR:

ACTIVATE GLOW PLUGS. CRANK ENGINE TO START. RELEASE KEY.

4 TURN CIRCUIT BREAKERS ON! / TRENSCHALTER EINSCHALTEN / ENCIENDA LOS CORTACIRCUITOS / ACTIVER LES DISJONCTEURS DU CIRCUIT

SHUT DOWN / AUSSCHALTEN / APAGUE / ÉTEINDRE

5 ALL CIRCUIT BREAKERS OFF! / ALLE TRENSCHALTER SIND AUSGESCHALTET! / TODOS LOS CORTACIRCUITOS ESTÁN APAGADOS! / TOUS LES DISJONCTEURS DU CIRCUIT SONT DÉACTIVÉS!

6 STOP ENGINE / MOTOR STOPPEN / DETENGA EL MOTOR / ÉTEINDRE LE MOTEUR

⚠ WARNING

Read and understand the supplied operator's manual before operating this machine. Failure to do so increases the risk of injury to yourself or others.

⚠ WARNUNG

Vor dem Betrieb dieser Maschine muss das Bedienerhandbuch gelesen und verstanden worden sein. Ein Unterlassen erhöht das eigene Verletzungsrisiko und das anderer.

⚠ ADVERTENCIA

Lea y asegúrese de comprender el manual del operador proporcionado antes de operar esta máquina. De lo contrario, aumenta el riesgo de lesiones a usted y a otras personas.

⚠ AVERTISSEMENT

Lire et comprenez le manuel de l'utilisateur fourni avec l'appareil avant de l'utiliser. L'omission de le faire augmente le risque de blessure pour vous et pour les autres.

NOTICE

REPLACE ENGINE OIL FILTER AFTER INITIAL 50 HOUR BREAK-IN WITH FILTER PART NUMBER: 10000014392

UNIT DECALS - LEFT SIDE INTERIOR

Item	Part No.	Qty	Description	Notes
1	A0002871539	1	DECAL, SAFETY	
2	10000014196	1	DECAL, 50 HOUR OIL FILTER	

UNIT DECALS - RIGHT SIDE INTERIOR

1

	⚠ WARNING
	⚠ WARNUNG
	⚠ ADVERTENCIA
	⚠ AVERTISSEMENT

1

⚠ DANGER
⚠ GEFAHR
⚠ PELIGRO
⚠ DANGER

1

	⚠ DANGER
	⚠ GEFAHR
	⚠ PELIGRO
	⚠ DANGER
DIESEL	

3

ULTRA LOW SULFUR FUEL ONLY	
S≤15 mg/kg	

1

NOTICE
Lamp glass can be damaged by road debris from towing vehicle and other vehicles. To prevent lamp damage, face lamp glass backwards during transport.
HINWEIS
AVISO
AVIS

1

⚠ WARNING
⚠ WARNING
⚠ ADVERTENCIA
⚠ AVERTISSEMENT

1

⚠ WARNING
Do not move unit with tower up!
⚠ WARNING
Die Einheit nicht mit ausgefahrenem Turm transportieren!
⚠ ADVERTENCIA
No mover la unidad con la torre elevada!
⚠ AVERTISSEMENT
Ne pas déplacer l'appareil si la tour est à pleine hauteur!

1

⚠ WARNING
⚠ WARNING
⚠ ADVERTENCIA
⚠ AVERTISSEMENT

4

⚠ WARNING
BREATHING DIESEL ENGINE EXHAUST EXPOSES YOU TO CHEMICALS KNOWN TO THE STATE OF CALIFORNIA TO CAUSE CANCER AND BIRTH DEFECTS OR OTHER REPRODUCTIVE HARM.
1) ALWAYS START AND OPERATE THE ENGINE IN A WELL-VENTILATED AREA.
2) IF IN AN ENCLOSED AREA, VENT THE EXHAUST TO THE OUTSIDE.
3) DO NOT MODIFY OR TAMPER WITH THE EXHAUST SYSTEM.
4) DO NOT RISE THE ENGINE EXCEPT AS NECESSARY.
5) FOR MORE INFORMATION, GO TO WWW.P6SWARNINGS.CA.GOV/DIESEL.
⚠ ADVERTENCIA
RESPIRAR EL ESCAPE DEL MOTOR DIESEL LO EXPONE A SUSTANCIAS QUÍMICAS QUE EL ESTADO DE CALIFORNIA RECONOCE COMO CAUSANTES DE CÁNCER Y DEFECTOS CONGÉNITOS U OTROS DAÑOS REPRODUCTIVOS.
1) SIEMPRE ARRANQUE Y OPERE EL MOTOR EN UN ÁREA BIEN VENTILADA.
2) SI ESTÁ EN UN ÁREA CERRADA, VENTILE EL ESCAPE HACIA EL EXTERIOR.
3) NO MODIFIQUE NI ALTERE EL SISTEMA DE ESCAPE.
4) NO HAGA FUNCIONAR EL MOTOR EN RÁPIDO, EXCEPTO SEGÚN SEA NECESARIO.
5) PARA OBTENER MÁS INFORMACIÓN, VISITE WWW.P6SWARNINGS.CA.GOV/DIESEL.
⚠ AVERTISSEMENT
L'INHALATION DES GAZ D'ÉCHAPPEMENT D'UN MOTEUR DIESEL VOUS EXPOSE À DES SUBSTANCES QUE L'ÉTAT DE CALIFORNIE SE CLASSE RESPONSABLES DE CANCER ET DE MALFORMATIONS CONGÉNITALES OU AUTRES ANOMALIES DE LA REPRODUCTION.
1) TOUJOURS DÉMARRER ET FAIRE FONCTIONNER LE MOTEUR DANS UN ENDROIT BIEN AÉRÉ.
2) S'IL EST DANS UN ENDROIT FERMÉ, ÉVACUER L'ÉCHAPPEMENT VERS L'EXTÉRIEUR.
3) NE PAS MODIFIER NI ALTERER LE SYSTÈME D'ÉCHAPPEMENT.
4) NE PAS LAISSER LE MOTEUR TOURNER À VIDE PLUS QUE NÉCESSAIRE.
5) POUR PLUS D'INFORMATION, ALLER À WWW.P6SWARNINGS.CA.GOV/DIESEL.

2

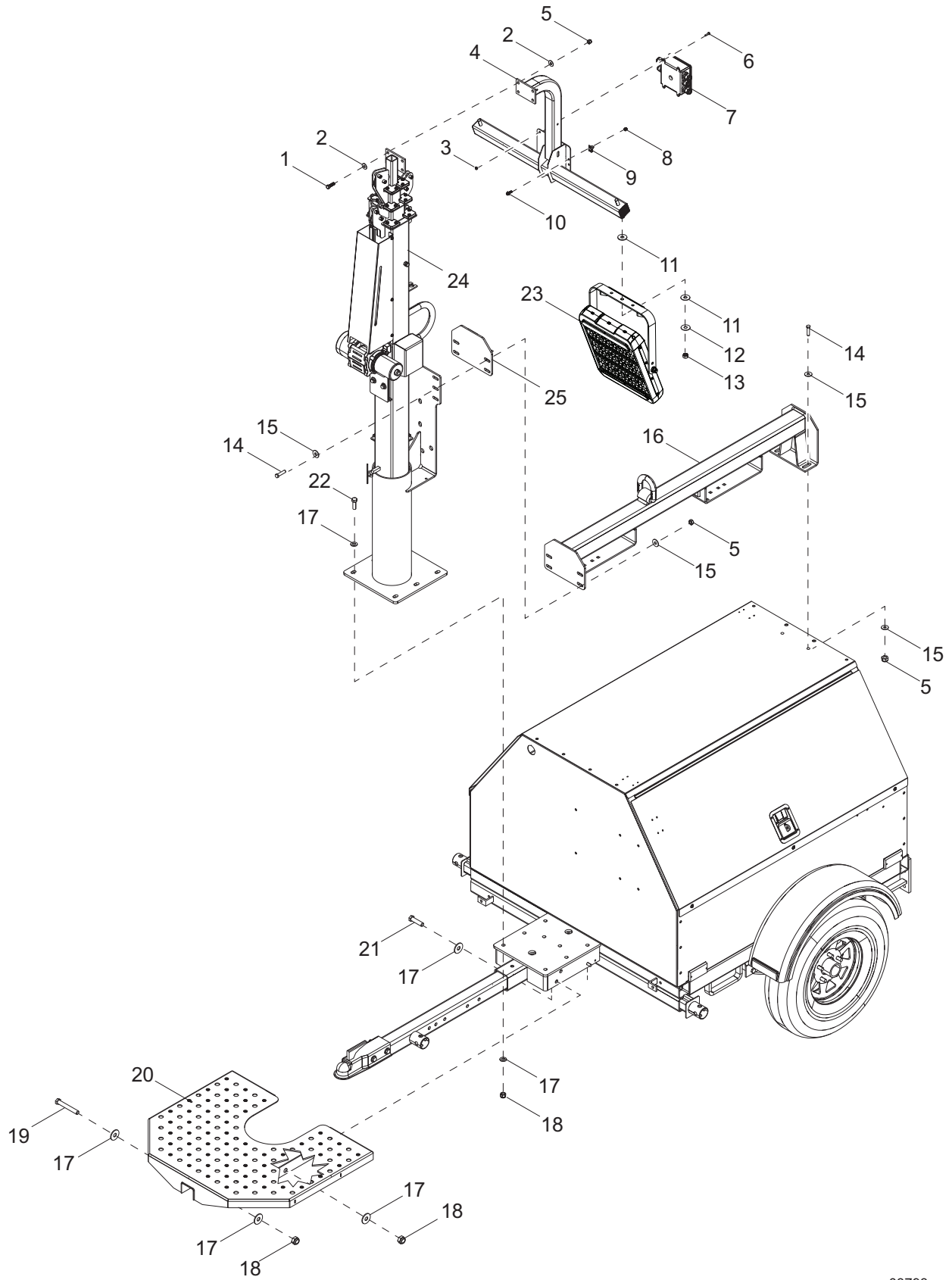
TO RAISE MAST:
1. Position unit on level surface. Use 4 chock blocks.
2. Extend mast. Lock control handle (left).
3. Press control handle (right).
4. STOP. An alarm will not sound unless on mast (S).
5. Release mast in slow steps. Tighten lock on mast (S).
6. Release mast in slow steps. Tighten lock on mast (S).
ADVERTENCIA DE PELIGRO:
1. Nivel de superficie plana. Poner los cuébrillos en las 4 esquinas.
2. Extender el mástil. Bloquear el control de la manivela (I).
3. Presionar el control de la manivela (D).
4. PARAR. No se oírá alarma a menos que el mástil (S) esté en posición (S).
5. Liberar el mástil en etapas lentas. Apretar el bloqueo del mástil (S).
6. Liberar el mástil en etapas lentas. Apretar el bloqueo del mástil (S).
AVERTISSEMENT:
1. Sur une surface plane. Poser les cales sous les 4 coins.
2. Étendre le mât. Bloquer la manivelle de commande (I).
3. Appuyer sur la manivelle de commande (D).
4. ARRÊTER. Une alarme ne sonnera que si le mât (S) est en position (S).
5. Libérer le mât en étapes lentes. Serrer le verrou du mât (S).
6. Libérer le mât en étapes lentes. Serrer le verrou du mât (S).
TO LOWER MAST:
1. Lower mast. Press control handle (right).
2. Release mast in slow steps. Tighten lock on mast (S).
3. Press control handle (left).
4. STOP. An alarm will not sound unless on mast (S).
5. Release mast in slow steps. Tighten lock on mast (S).
6. Release mast in slow steps. Tighten lock on mast (S).
ADVERTENCIA DE PELIGRO:
1. Bajar el mástil. Presionar el control de la manivela (D).
2. Liberar el mástil en etapas lentas. Apretar el bloqueo del mástil (S).
3. Presionar el control de la manivela (I).
4. PARAR. No se oírá alarma a menos que el mástil (S) esté en posición (S).
5. Liberar el mástil en etapas lentas. Apretar el bloqueo del mástil (S).
6. Liberar el mástil en etapas lentas. Apretar el bloqueo del mástil (S).
AVERTISSEMENT:
1. Baisser le mât. Appuyer sur la manivelle de commande (D).
2. Libérer le mât en étapes lentes. Serrer le verrou du mât (S).
3. Appuyer sur la manivelle de commande (I).
4. ARRÊTER. Une alarme ne sonnera que si le mât (S) est en position (S).
5. Libérer le mât en étapes lentes. Serrer le verrou du mât (S).
6. Libérer le mât en étapes lentes. Serrer le verrou du mât (S).

6 MLT4060-80MKV-LED Parts Manual A0001521579 C 03794

UNIT DECALS - RIGHT SIDE INTERIOR

Item	Part No.	Qty	Description	Notes
1	A0002871539	1	DECAL, SAFETY	
2	A0002871523	1	DECAL, MAST SET-UP	
3	27433	1	DECAL, ULTRA-LOW SULFUR	
4	10000038540	1	DECAL, PROP 65	

MAST, JUNCTION BOX AND LIGHTS TO UNIT

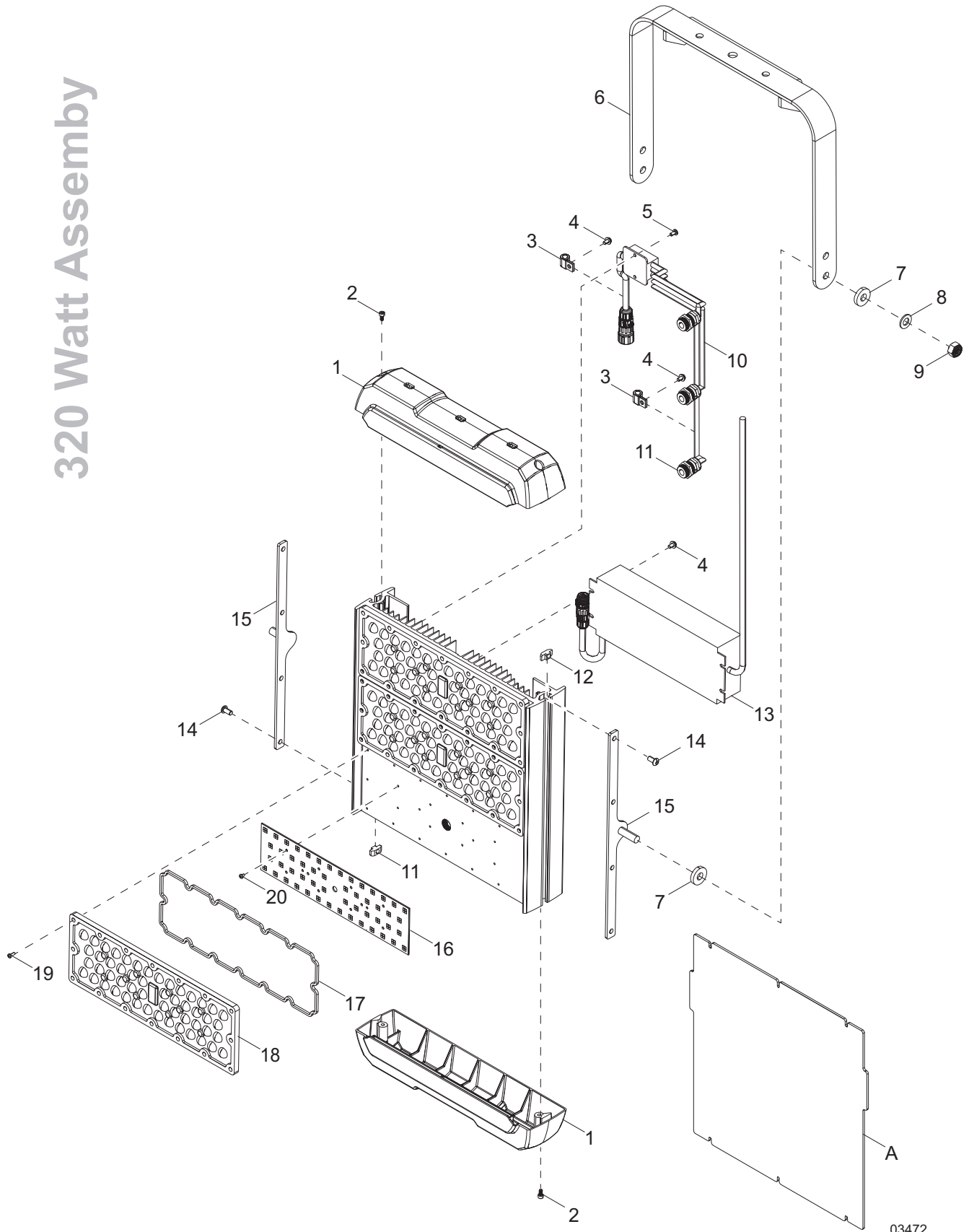


03793

MAST, JUNCTION BOX AND LIGHTS TO UNIT

Item	Part No.	Qty	Description	Notes
1	60352	4	SCREW, .375-16 X 1.125 STANDARD HEX, G5	
2	60386	8	WASHER, .375 FLAT .993/.064	
3	60061	4	NUT, 10-32 NYLOCK	
4	A0000199129	1	WELDMENT MAST CROSSARM	
5	60358	10	NUT, .375-16 NYLOCK, G5	
6	60424	4	SCREW, 6-32X.750 PAN PHIL G2 SELF THREAD	
7	10000032430	1	ASSY JUNCTION BOX MAST 4 LT	
8	60787	1	NUT, .250-20 NYLOCK - SS	
9	60375	1	CLAMP, TUBING .312 LIGHT DUTY	
10	60107	1	SCREW, .250-20 X .750 SERRATED FLANGE HEX,	
11	A0000221212	8	WASHER, FLAT M12 X 37OD X 1.50 - NYLON	
12	G052259	4	WASHER, M12 FLAT	
13	60305	4	NUT, M12-1.75 NYLOCK, G8	
14	61036	4	SCREW, .375-16 X 1.25 STANDARD HEX, SS	
15	60698	12	WASHER, .375 FLAT .875/.040, SS	
16	A0001214536	1	WELDMENT, LIFT SUPPORT - VERTICAL MAST	
17	60309	12	WASHER, .500 FLAT 1.060/.090	
18	62221	9	NUT, .500-13 NYLOCK, G5	
19	50215	2	SCREW, .500-13 X 4.0 STANDARD HEX, G5	
20	A0002741722	1	STB WELDMENT, STEP PLATFORM	
21	60388	2	SCREW, .500-13 X 1.50 STANDARD HEX, G5	
22	60683	6	SCREW, .500-13 X 1.50 STANDARD HEX, SS	
23	A0000987984	4	ASSY LED LIGHT HARDWIRE 320W	
24	A0003456189	1	MAST GROUP BLK VERT ELEC - 4000 LED	<i>Page 8</i>
25	A0003272382	1	STB SPACER MAST LIFT SUPPORT	

320 Watt Assembly



03472

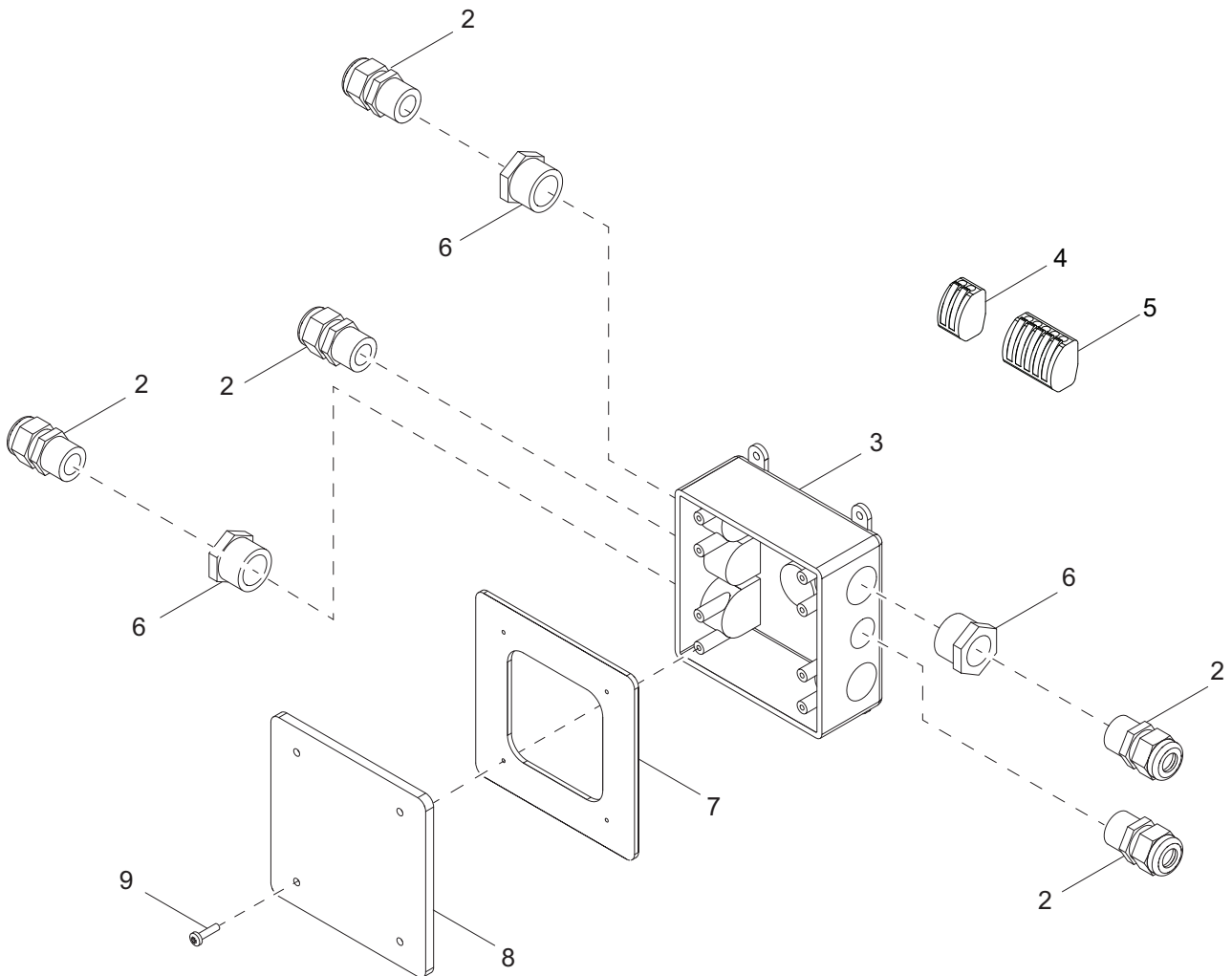
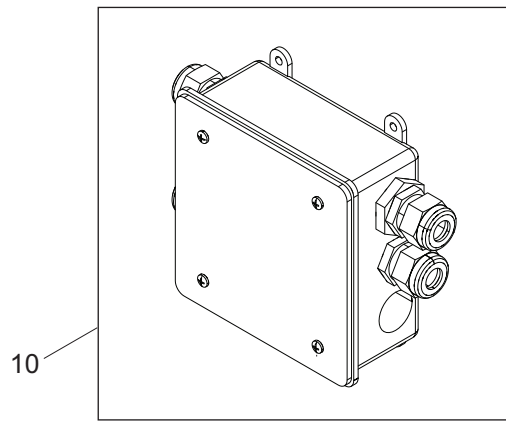
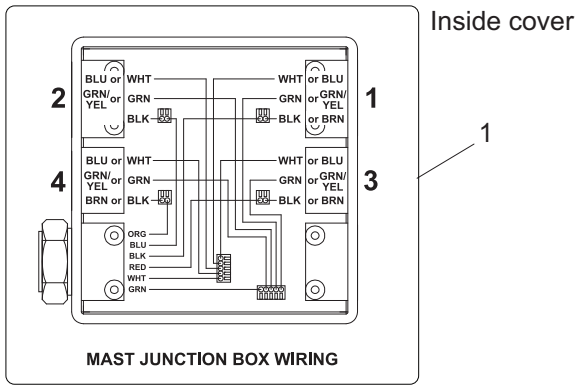
LED LIGHT ASSEMBLY

Item	Part No.	Qty	Description	Notes
1	A0000092362	2	END CAP, WITH DIFFUSER SLOT	
2	A0000188756	4	SCREW, M4-.7 X 12	
3	G020151	2	CLAMP, .312 X .302 - STEEL/VINYL	
4	0G7070	6	SCREW, M4-.7 X 14 PPHM	
5	G020745	2	SCREW, M4-.7 X 12 PPHM	
6	A0000416868	1	BRACKET, TRUNNION - 320W	
7	A0000188752	4	WASHER, M10 ID X 25MM OD X 5 MM T	
8	60027	2	WASHER, M10 FLAT	
9	A0000009451	2	NUT, M10-1.50 NYLOCK, G8.8	
10	A0000188731	1	CABLE, 2 POSITION, 3 WAY SPLITTER	
11	A0000092266	3	STRAIN RELIEF, 320W LED	
12	A0000188739	8	NUT, M6-1.00 X 12 HAMMER	
13	A0000188779	1	ASSEMBLY, DRIVER WITH CONNECTOR	
14	A0000214354	8	SCREW, M6-1.0 X 12 BHSC - BLACK	
15	A0000095202	2	BRACKET, TRUNNION TO FRAME	
16	A0000092359	3	LED, PCB POPULATED 3030	
17	A0000092361	3	GASKET, OPTICAL LENS SEAL	
18	A0000092360	3	LENS, OPTICAL 60°	
19	A0000192578	48	SCREW, MOUNTING - OPTICAL LENS	
20	A0000192575	30	SCREW, MOUNTING - PCB	

DIFFUSED LIGHTING (If equipped):

A	A0000095669	1	KIT, DIFFUSER LENS 320W - LED
--	A0000277071	1	KIT, DIFFUSER LENS STORAGE 320W - LED

MAST JUNCTION BOX ASSEMBLY

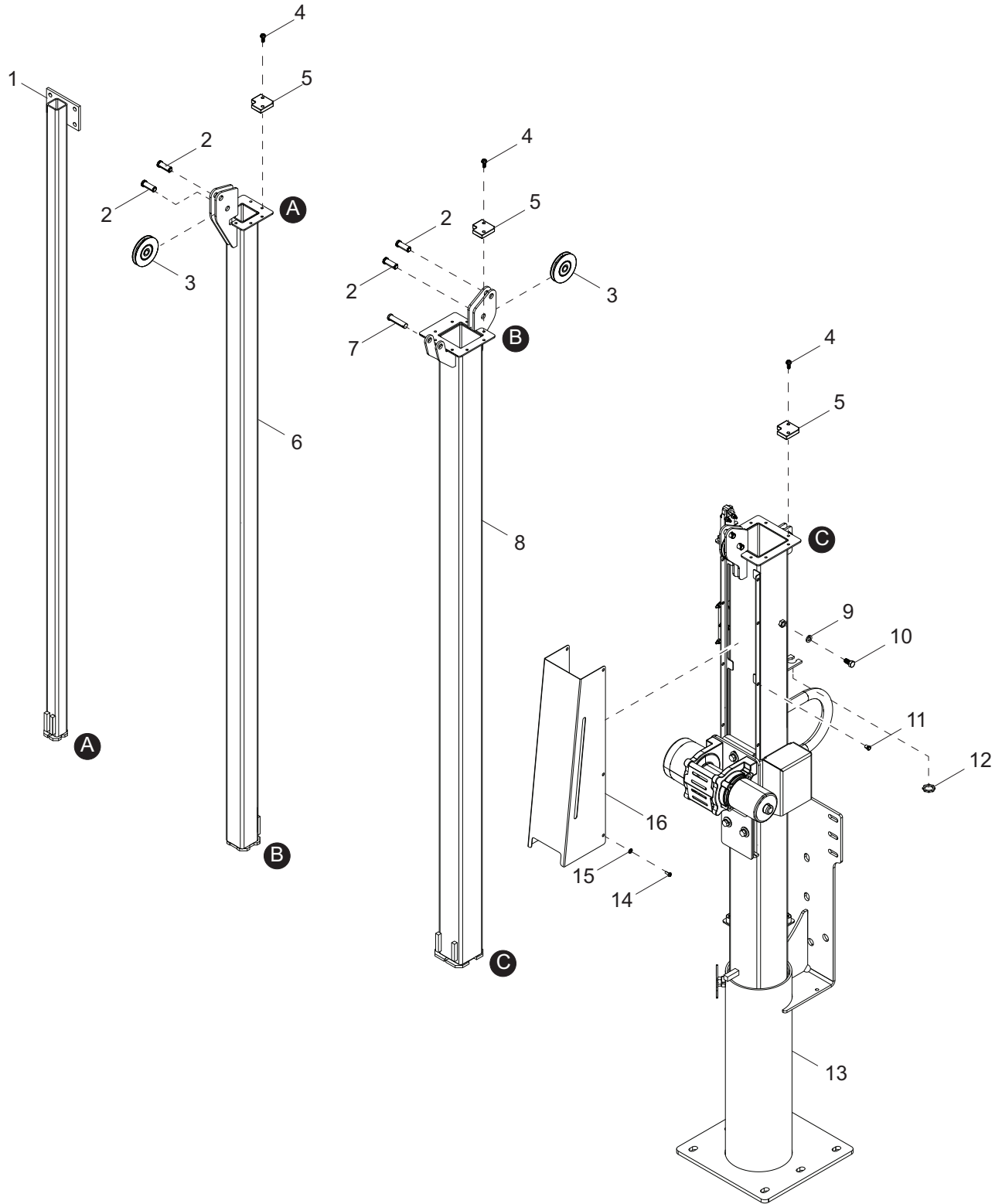


03475

MAST JUNCTION BOX ASSEMBLY

Item	Part No.	Qty	Description	Notes
1	10000023482	1	DECAL, MAST JUNCTION BOX WIRING	
2	15864	5	STRAIN RELIEF, .500NPT WATER TIGHT	
3	12094	1	BOX, JUNCTION	
4	66100	4	CONNECTOR, 2 POSITION.	
5	66102	2	CONNECTOR, 5 POSITION.	
6	60755	2	FITTING, STRT .750MNPT X .500FNPT, NYLON	
7	13749SRV	1	GASKET, JUNCTION BOX - HFI 281000	
8	12109	1	COVER, BOX, 2-GANG PLASTIC	
9	60424	4	SCREW, 6-32 X .750 PAN PHILLIPS, G2	
10	A0001533483	1	ASSEMBLY, MAST JUNCTION BOX	

MAST ASSEMBLY

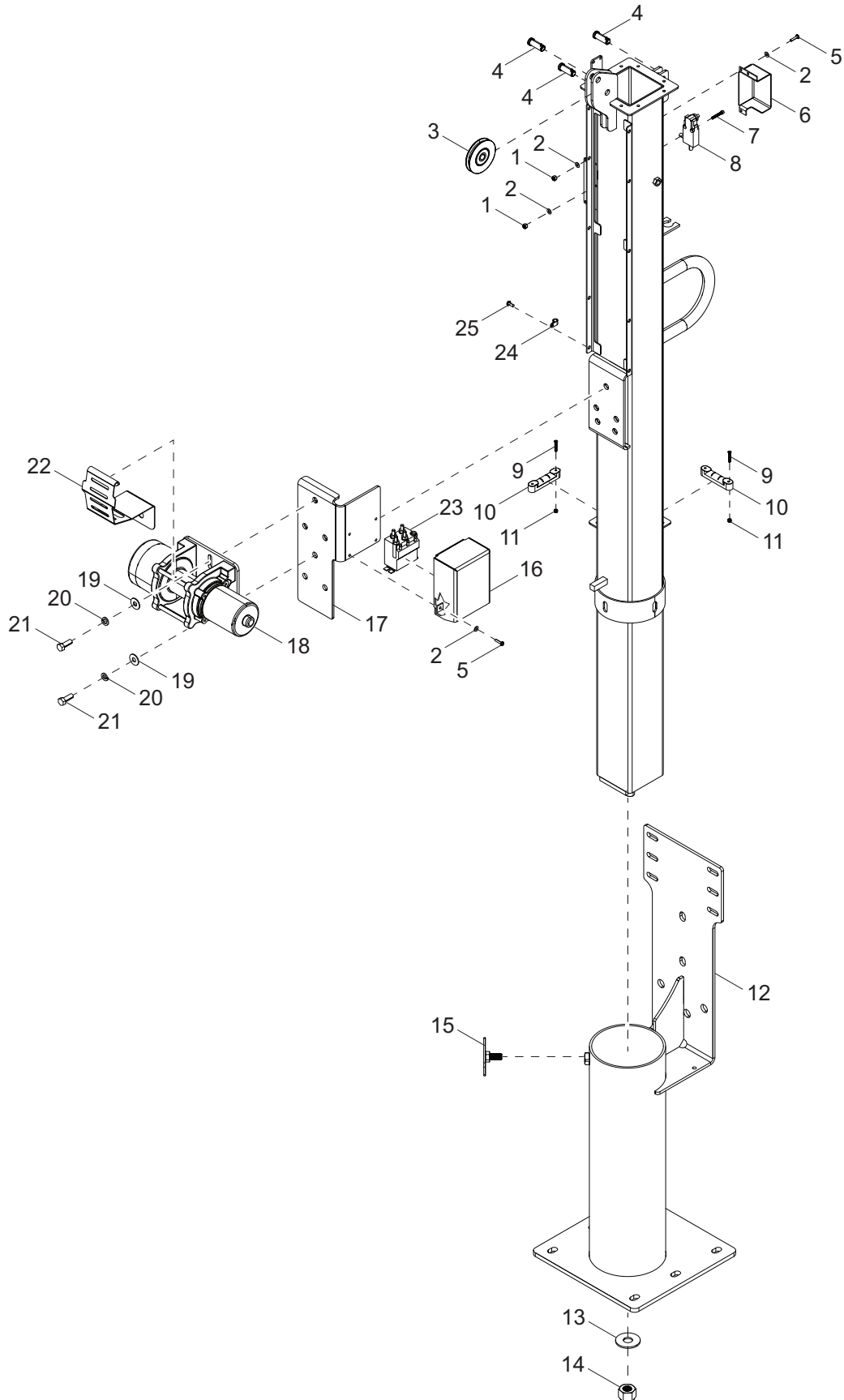


03792

MAST ASSEMBLY

Item	Part No.	Qty	Description	Notes
1	31264B	1	WELDMENT, MAST - 1.50	
2	63325	4	PIN, CLEVIS- .500 DIA X 1.063 ZP(SLIC)	
3	33736	2	ASSY, PULLEY VERTICAL MAST	
4	63358	24	SCREW, .250-20X.625 HX WASH HD ZC	
5	31225	12	GUIDE	
6	31261B	1	WELDMENT, MAST - 2.25	
7	35655	1	PIN, CLEVIS- .500 DIA X 1.75 ZP(SLIC)	
8	A0002848667	1	STB WELDMENT MAST 3.00	
9	60703	1	WASHER, .375 SPLIT LOCK 18-8 SS	
10	62269	1	SCREW, .375-16X.75 STD HEX 18-8 SS, RED	
11	32922	6	INSERT, THD #10-32 SPLINED .020-.130 GR	
12	15861	1	NUT, SPECIAL, .500 NPT LOCK (LN101SC)	
13	A0002749456	1	STB WELDMENT MAST 4.00	
14	60398	6	SCREW, 10-32X.500 PAN PHIL 18-8 SS	
15	60067	6	WASHER, #10 FLAT .435/.060 18-8 SS	
16	A0002860610	1	STB CABLE GUARD, ELECTRIC WINCH	
--	39650	1	COIL CORD, 120 IN TAIL	
--	31247	1	CABLE - .188IN X 144 IN W/ BALL SWEDGE	Attaches to item 1
--	31248	1	CABLE - .188IN X 79.75IN W/BALL SWEDGE RED,	Attaches to item 6
--	31277	1	CABLE- .188IN X 78.00IN W/ BALL SWEDGE BLU	Attaches to item 8

MAST ASSEMBLY - BOTTOM POST

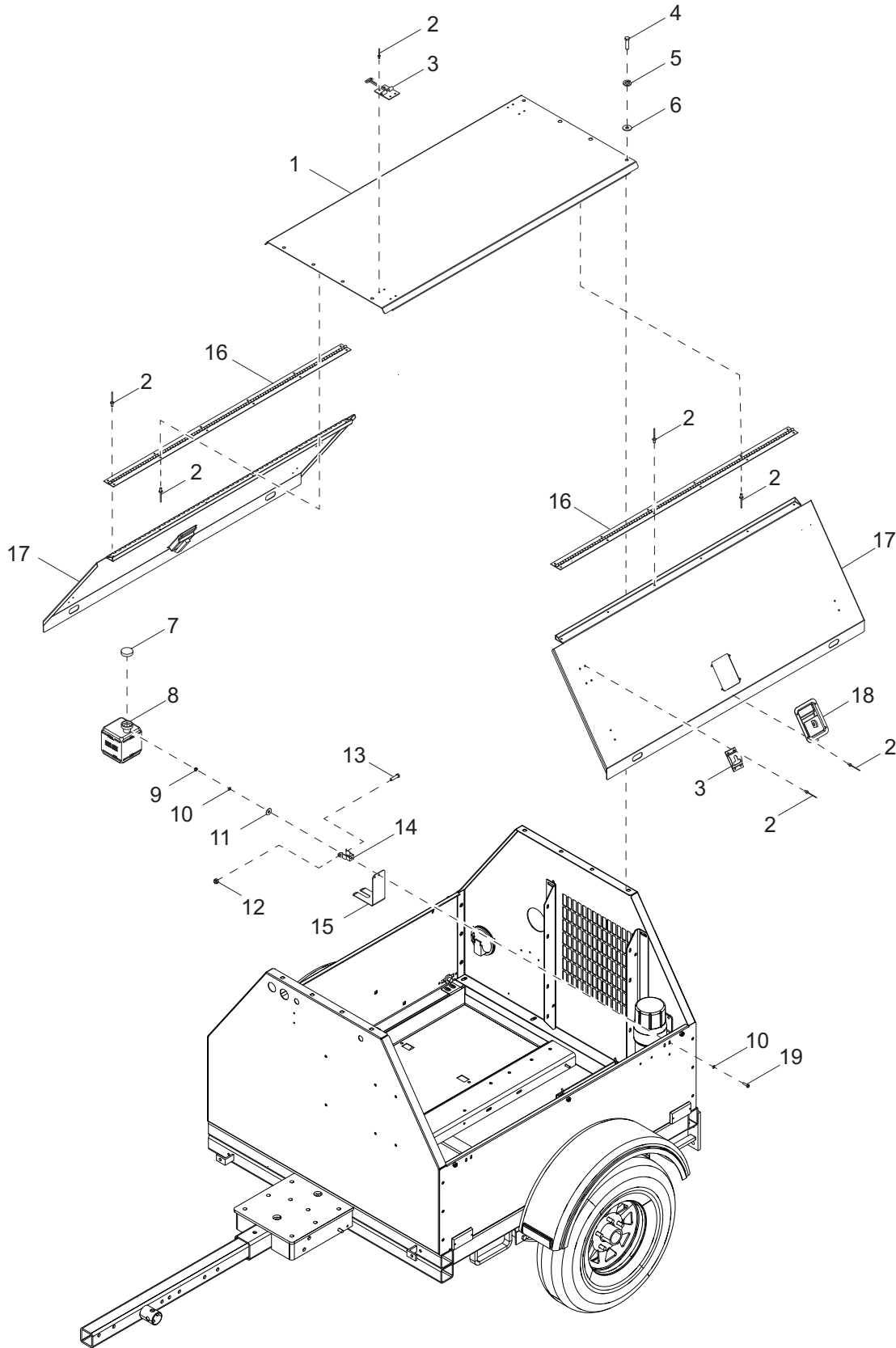


03791

MAST ASSEMBLY - BOTTOM POST

Item	Part No.	Qty	Description	Notes
1	60270	9	NUT, 8-32 NYLK CLASS 6 ZC	
2	60269	14	WASHER, #8 FLAT .433/.036 ZC	
3	33736	1	ASSY, PULLEY VERTICAL MAST	
4	63325	3	PIN, CLEVIS- .500 DIA X 1.063 UL	
5	60694	5	SCREW, 8-32X.750 PAN PHIL 18-8 SS	
6	37205B	1	COVER, UP LIMIT SWITCH	
7	67190	2	SCREW, 8-32x1.125 SOC HEX 18-8 SS	
8	31739	1	ASSY, UP STOP SWITCH MLT6S/8S	
9	A0000945464	4	SCREW PFHM M4-0.7 X 25 18-8 SS	
10	A0000764090	2	LEVEL- SPIRIT	
11	60051	4	NUT, M4-.70 NYLK G8.8 ZC DIN985	
12	A0002741745	1	STB WELDMENT, 4INCH MAST ROTATION TUB	
13	60247	1	WASHER, .750 FLAT 2.020/.130 ZC	
14	60584	1	NUT, .750-10 NYLK G5 YELLOW ZINC	
15	10000018317	1	STZY WELDMENT T HANDLE	
16	A0002848659	1	ALB COVER, CONDUCTOR	
17	A0002848669	1	STB WELDMENT PLATE, WINCH MOUNTING	
18	12874	1	WINCH, ELEC - 770LB HOIST (WARN DC800)	
19	60386	6	WASHER, .375 FLAT .993/.064 ZC	
20	60206	6	WASHER, .375 SPLIT LOCK HARDENED ZC	
21	60205	6	SCREW, .375-16X1.000 STD HEX G5 ZC	
22	A0002851411	1	STB COVER, ELECTRIC WINCH	
23	11293	1	CONTACTOR, 12V ELECTRIC WINCH	
24	60375	2	CLAMP, TUBING - .312 LT DUTY	
25	60268	2	RIVET, .188 DIA X .126 TO .250 GRIP SS	
--	10770	1	ASSY, WIRE - COIL CORD GROUND EXTENSION	
--	31742	1	WIRE GROUP, ELECTRIC WINCH BOX, MLT6S/8S	
--	31743	1	HARNESS, WINCH POWER CABLES, MLT6S/8S	
--	A0003272208	1	HARNESS, ELEC MAST CNTRL MLT4000	

ROOF AND DOORS TO UNIT



03790

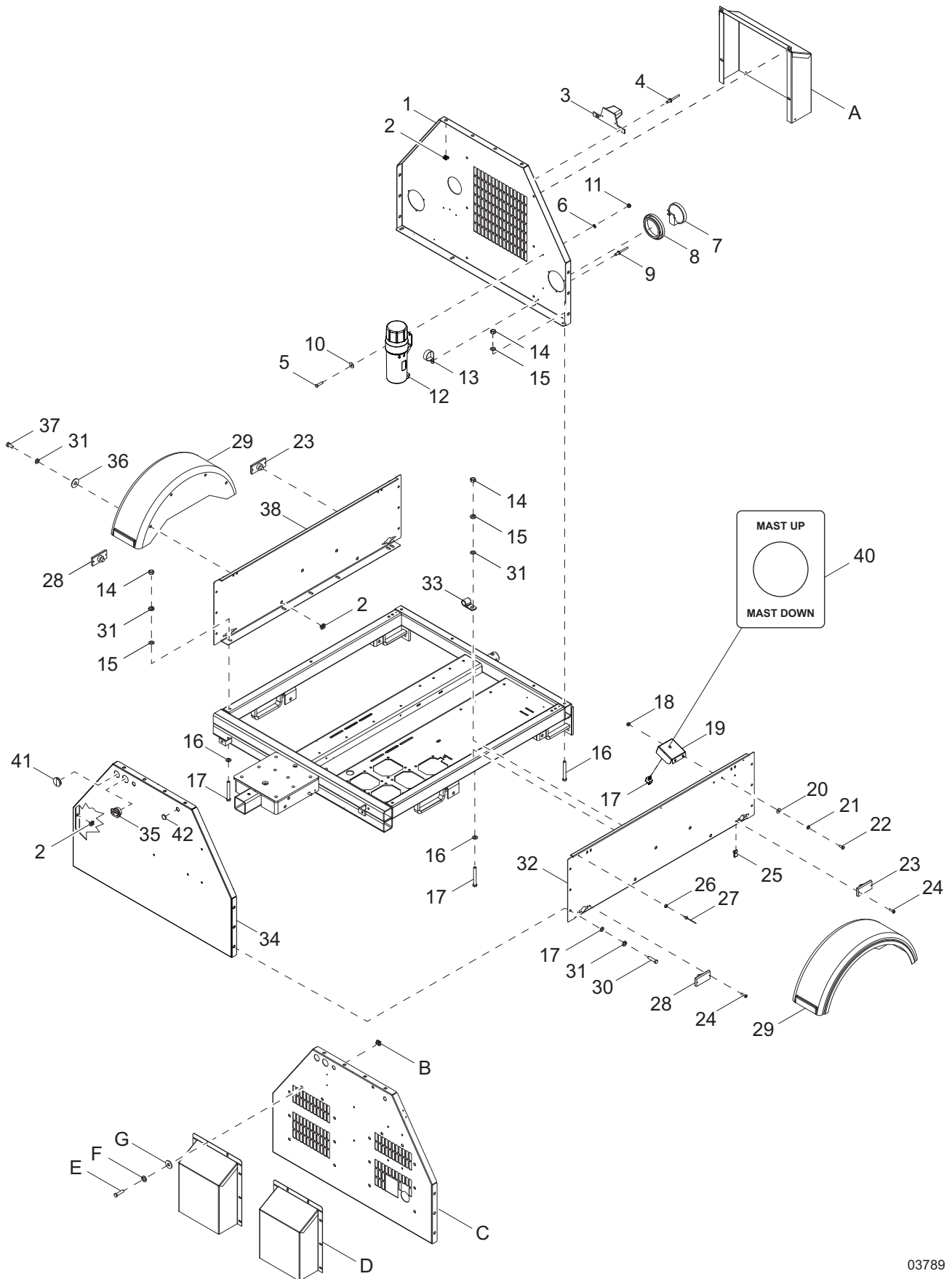
ROOF AND DOORS TO UNIT

Item	Part No.	Qty	Description	Notes
1	16538W	1	PANEL, TOP	
2	60268	48	RIVET, .188 DIAMETER X .126 TO .250 GRIP, SS	
3	12605	2	LATCH, T-HANDLE, SS	
4	60690	4	SCREW, .375-16 X 1.0 STANDARD HEX, SS	
5	60703	4	WASHER, .375 SPLIT LOCK, SS	
6	60698	4	WASHER, .375 FLAT .875/.040, SS	
7	19714	1	CAP, OVERFLOW JUG	
8	20287	1	JUG, OVERFLOW	
9	60061	1	NUT, 10-32 NYLOCK	
10	60067	2	WASHER, #10 FLAT .435/.060, SS	
11	60696	1	WASHER, .250 FLAT .625/.050, SS	
12	60144	1	NUT, .250-20 NYLOCK, G5	
13	60414	1	SCREW, .250-12 X 1.50 STANDARD HEX, G5	
14	19726	1	CLAMP, OVERFLOW JUG	
15	22419B	1	BRACKET, OVERFLOW JUG	
16	16598	2	HINGE, DOOR - .188 PIN, 48.5 INCH LONG	
17	16591W	2	PANEL, DOOR	
18	A0000278989	2	LATCH, PADDLE - 7 LB SPRING	
19	61180	1	SCREW, 10-32 X .750 PAN PHILLIPS, SS	

SILENT PACK: (if equipped)

--	16739W	2	PANEL, DOOR	
----	--------	---	-------------	--

FRONT, REAR, AND SIDE PANELS TO UNIT



03789

FRONT, REAR, AND SIDE PANELS TO UNIT

Item	Part No.	Qty	Description	Notes
1	35500W	1	PANEL, REAR	
2	60657	26	NUT, .375-16 CAGE, G5, FOR 12 GA	
3	A0001478895	1	ASSEMBLY, LICENSE PLATE HOLDER	
4	60423	2	RIVET, .188 DIAMETER X .250 TO .375 GRIP	
5	60457	2	NUT, 10-24 NYLOCK, G2	
6	60067	2	WASHER, #10 FLAT .435/.060, SS	
7	A0001478886	2	ASSY, REAR TAIL/TURN LIGHT, 3-WIRE W/ PLUG	
8	10221	2	GROMMET, REAR LIGHT, RUBBER	
9	60268	2	RIVET, .188 DIAMETER X .126 TO .250 GRIP, SS	
10	60089	2	WASHER, .265 FENDER 1.25/.060	
11	60540	2	SCREW, 10-24 X .750 PAN PHILLIPS, SS	
12	36988	1	MANUAL HOLDER TUBE	
13	15628	2	CLAMP, WIRE - .38 PLASTIC	
14	60140	10	NUT, .375-16 HEX, G5	
15	60698	38	WASHER, .375 FLAT .875/.040, SS	
16	60689	10	SCREW, .375-16 X 4.0 STANDARD HEX SS	
17	65707	1	SWITCH, TOGGLE - SPDT WEATHERPROOF	
18	54169	2	NUT, .25-20 NYLOCK	
19	A0003272457	1	STB BRACKET MAST CONTROL SWITCH	
20	60696	2	WASHER, .250 FLAT .625/.050, SS	
21	60704	2	WASHER, .250 SPLIT LOCK, SS	
22	60684	2	SCREW, .250-20 X .875 STANDARD HEX, SS	
23	66372	2	LIGHT, CLEARANCE MARKER - RED	
24	60694	8	SCREW, 8-32 X .750 PAN PHILLIPS, SS	
25	60730	8	NUT, 8-32 U-CLIP	
26	15215	6	BUMPER, RUBBER	
27	60267	6	RIVET, .125 DIAMETER X .191 TO .270 GRIP	
28	66373	2	LIGHT, CLEARANCE MARKER - AMBER	
29	16560	2	FENDER, PLASTIC - 13 INCH TIRE	
30	60690	22	SCREW, .375-16 X 1.0 STANDARD HEX, SS	
31	60703	36	WASHER, .375 SPLIT LOCK, SS	
32	35502W	1	PANEL, LEFT SIDE	
33	60649	1	CLAMP, TUBING - .750 HEAVY-DUTY	
34	10000043625	1	PANEL, FRONT	
35	66425	1	STRAIN RELIEF, 1.25 WITH NUT	
36	60386	8	WASHER, .375 FLAT .993/.064	
37	60295	8	SCREW, .375-16 X .750 STANDARD HEX, SS	
38	33240W	1	PANEL, RIGHT SIDE	
39	54169	2	NUT, .25-20 NYLOCK	
40	33552	1	DECAL, MAST UP/MAST DOWN	
41	A0003282295	1	PLUG HOLE 1.66 DIA DOME WHITE PLASTIC	
42	60733	2	PLUG, HOLE .875 DIA WHITE	
<i>SILENT PACK: (if equipped)</i>				
A	12189W	1	DUCT, RADIATOR GUARD	
B	15425	16	NUT, .312-18 CAGE	
C	A0002777824	1	PANEL, FRONT	
D	34783W	2	DUCT, FRONT	
E	60507	16	SCREW, .312-18 X 1.0 STANDARD HEX, SS	
F	60701	16	WASHER, .312 SPLIT LOCK, SS	
G	60340	16	WASHER, .312 FLAT .875/.040, SS	

CONTROL BOX TO UNIT

Item	Part No.	Qty	Description	Notes
1	60649	1	CLAMP, TUBING - .750 HEAVY DUTY	
2	60340	12	WASHER, .312 FLAT .875/.040, SS	
3	60303	6	NUT, .312-18 NYLOCK, G2	
4	A0002936359	1	CONTROL BOX	
5	11543B	2	SPACER, CONTROL BOX	
6	60090	2	NUT, .250-20 WING, G5	Included with item 9
7	60089	2	WASHER, .265 FENDER 1.250/.060	Included with item 9
8	12924B	1	ANGLE, BATTERY HOLD DOWN	
9	14146	2	BOLT, J .250-20 X 10.0	
10	62043	6	SCREW, .312-18 X 2.25 STANDARD HEX, SS	

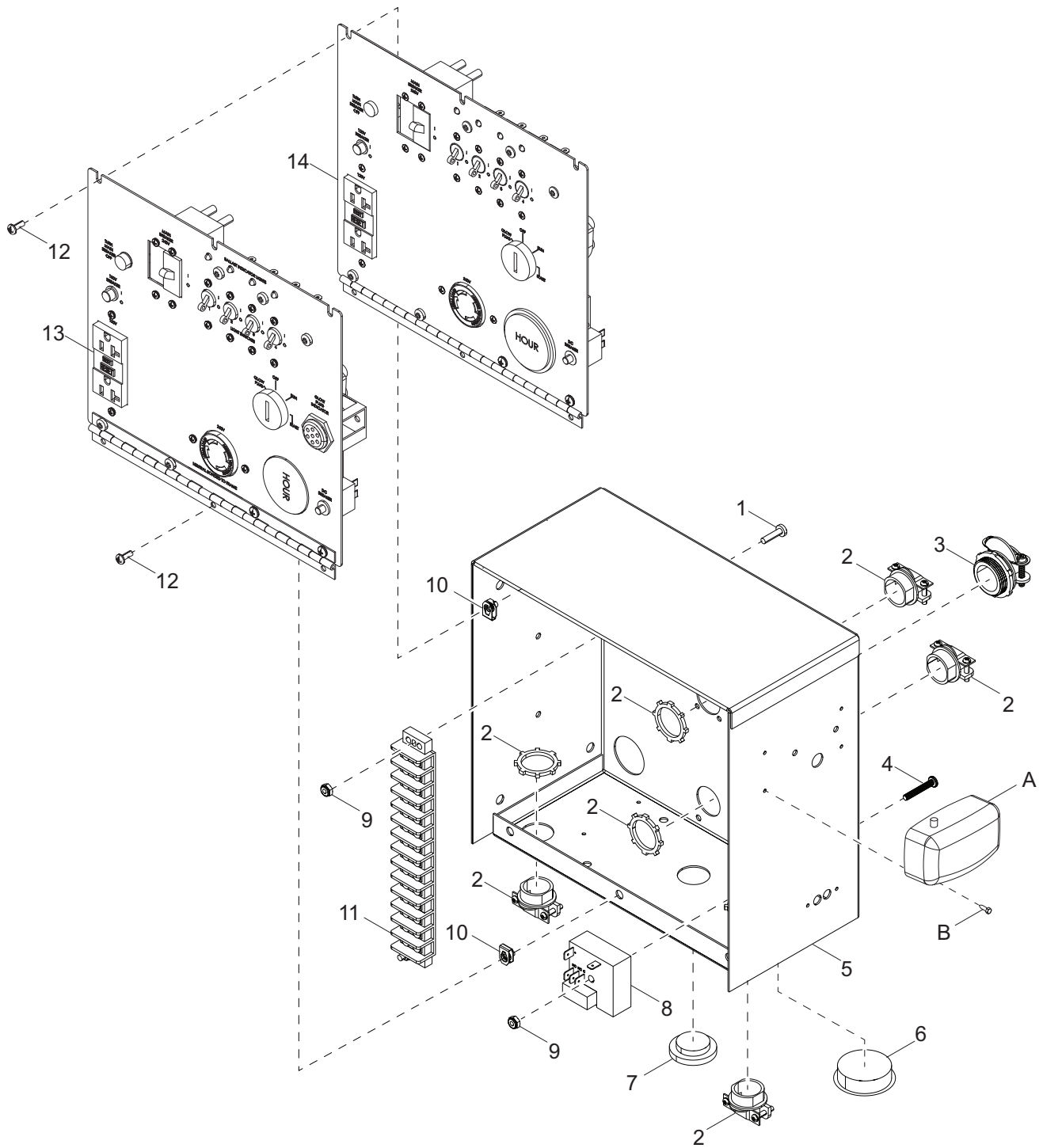
BATTERY CHARGER: (if equipped)

A	60062	4	SCREW, 10-32X.750 PAN PHIL G2 ZC
B	68836	1	BATTERY CHARGER12VDC, W/HARNESS
C	60067	4	WASHER, #10 FLAT .435/.060 18-8 SS
D	60061	4	NUT, 10-32 NYLK ZC
--	21259	1	DECAL, BATTERY CHARGER

BATTERY DISCONNECT: (if equipped)

E	60028	2	SCREW, .312-18 X 1.0 STANDARD HEX, G5
F	60271	2	WASHER, .312 SPLIT LOCK
G	60277	2	SCREW, 10-32 X .500 PAN PHILLIPS, G2
H	60119	2	WASHER, .312 FLAT .875/.070
J	65499	1	ASSEMBLY, SWITCH LOCKOUT LEVER
K	13654B	1	BRACKET, BATTERY DISCONNECT
L	60067	2	WASHER, #10 FLAT .435/.060, SS
M	65498	1	SWITCH, DISCONNECT
N	60061	2	NUT, 10-32 NYLOCK
P	15073	1	CABLE, BATTERY - 24 INCH. 4GA BLACK
Q	69896	1	CABLE, BATTERY JUMPER - 33 INCH. 4GA RED
R	60303	2	NUT, .312-18 NYLOCK, G2
S	66906	1	CABLE, BATTERY - 18 IN 4GA RED W/BOOT

CONTROL BOX ASSEMBLY- ANALOG



03787

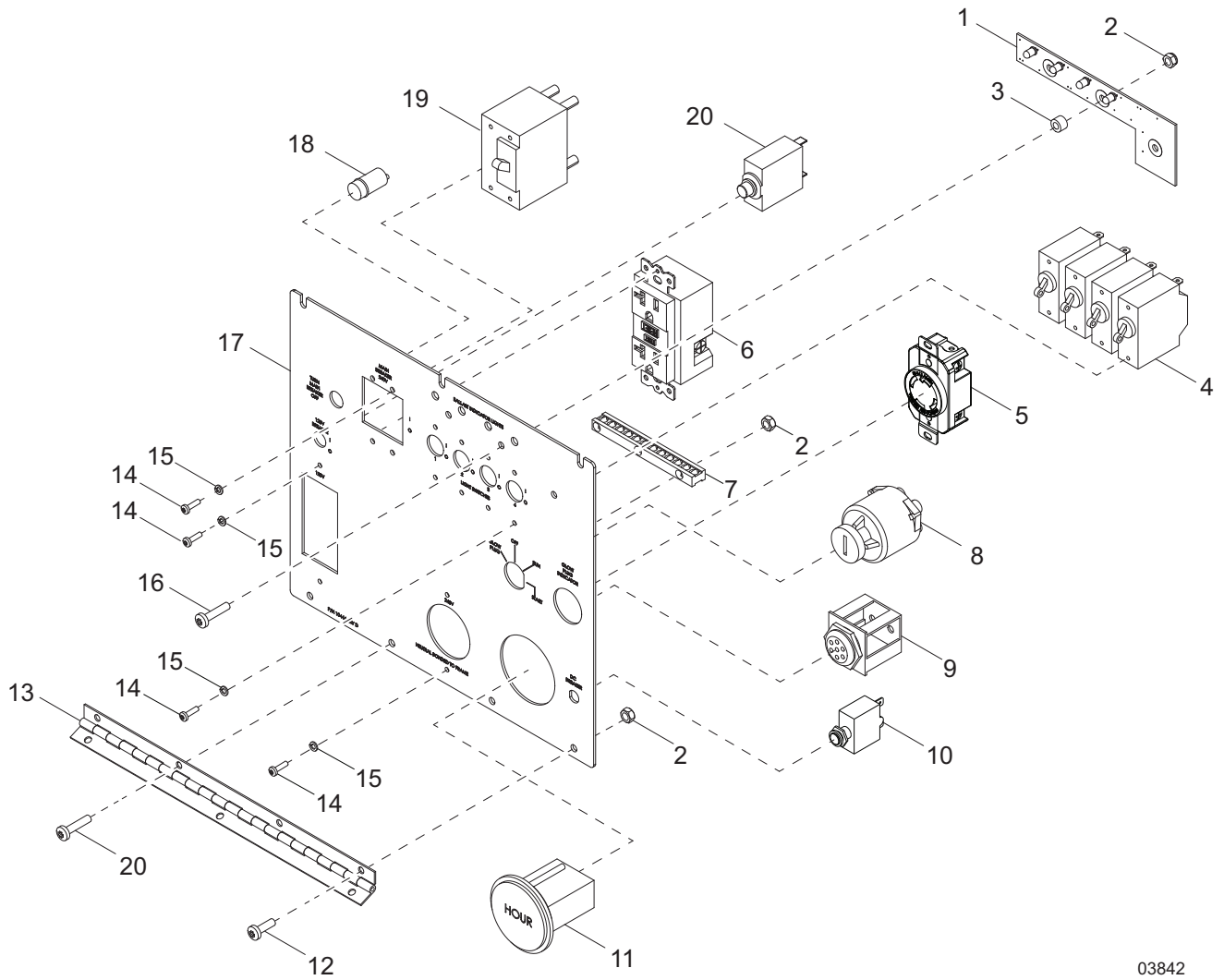
CONTROL BOX ASSEMBLY - ANALOG

Item	Part No.	Qty	Description	Notes
1	60062	2	SCREW, 10-32 X .750 PAN PHILLIPS, G2	
2	14219	4	STRAIN RELIEF, .750 ROMEX	
3	65490	1	STRAIN RLF, 1.00 ROMEX W/NUT	
4	60396	1	SCREW, 10-32 X 1.250 PAN PHILLIPS, G2	
5	A0002936359	1	STB BOX CONTROL - MLT4000	
6	61037	1	PLUG, HOLE 1.75 DIA BLACK	
7	60746	1	PLUG, HOLE 1.094 RECESSED - BLACK	
8	14201	1	RELAY, 10A SPDT 12VDC - 15 SEC. TIME DELAY	
9	60061	4	NUT, 10-32 NYLOCK	
10	63105	6	NUT, 8-32 U-CLIP, G5	
11	66013	1	BLOCK, TERMINAL 14 POSITION, 30A, 600V	
12	60526	6	SCREW, 8-32 X .500 PAN PHILLIPS, G2	
13	A0003469182	1	ASSY-PANEL-SUB CONTROL	MLT4060MV
14	A0003469862	1	ASSY-PANEL-SUB CONTROL	MLT4060/80MK
--	A0003469866	1	ASSY-PANEL-SUB CONTROL	Items 1-12,14
--	A0003470090	1	ASSY-PANEL-SUB CONTROL	Items 1-13

INTERIOR LIGHT: (if equipped)

A	11947	1	LIGHT, INTERIOR W/SWITCH
B	60364	4	SCREW, 10-16 X .500 STANDARD HEX, G2,

CONTROL PANEL ASSEMBLY - ANALOG

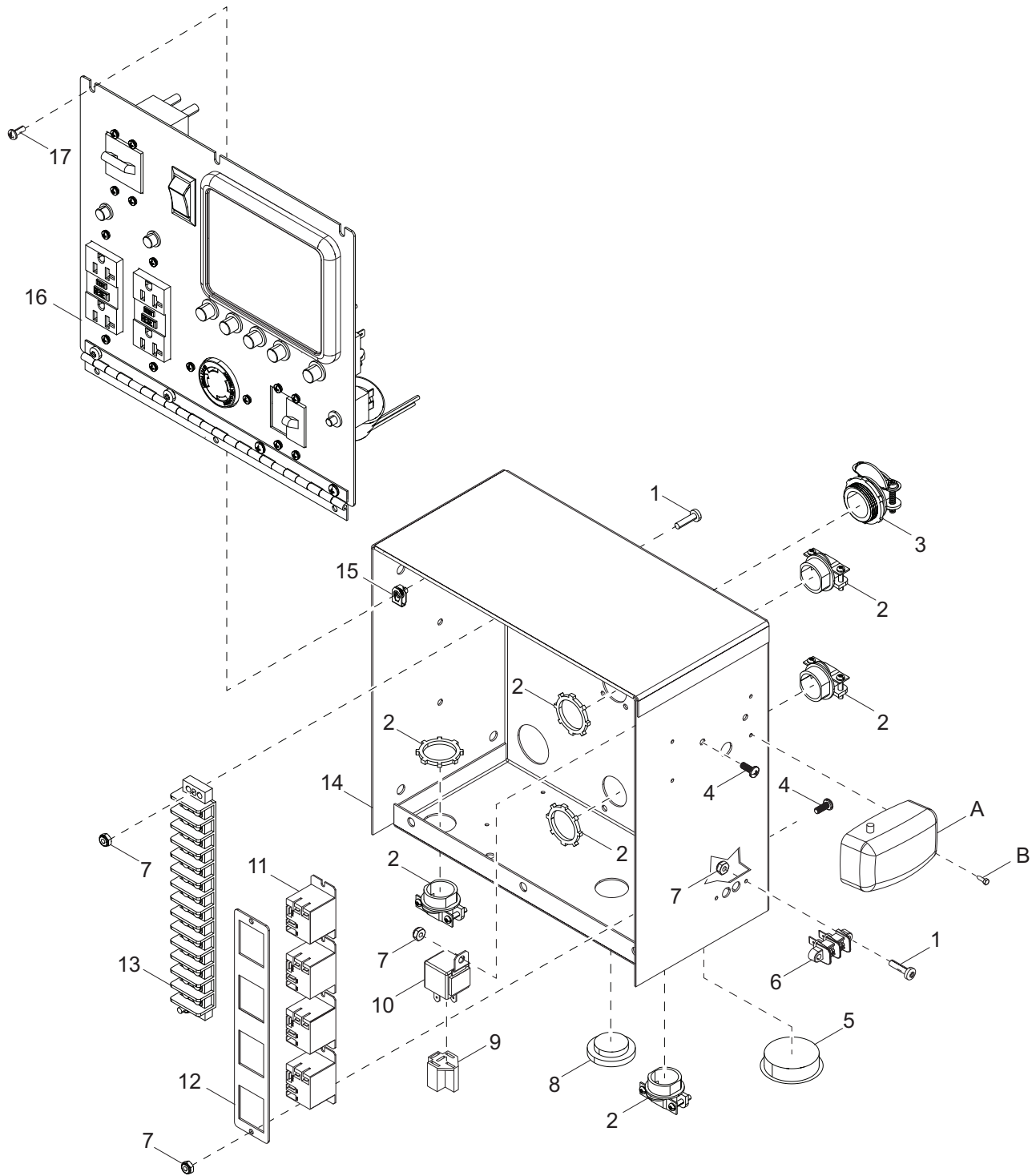


03842

CONTROL PANEL ASSEMBLY - ANALOG

Item	Part No.	Qty	Description	Notes
1	66423	1	PCB, LED LIGHTS W/CONNECTOR	
2	60061	7	NUT, 10-32 NYLOCK	
3	66257	3	SPACER, .2 ID X .375 OD X .25 LONG, PLASTIC	
4	14249	4	BREAKER, 15A, 120V, 1-POLE	
5	65488	1	RECEPTACLE, 240V/30A TWIST-LOCK	
6	14130	1	RECEPTACLE, 120V/20A GFI	
7	14204	1	KIT, GROUND BAR	
8	15195SRV	1	SWITCH, KEY	
9	16694SRV	1	GLOW PLUG INDICATOR	MLT4060MV
10	65850	1	BREAKER, 10A, 240V, 1-POLE, PUSH BUTTON	
11	15085	1	GAUGE, HOUR METER	
12	60277	2	SCREW, 10-32 X .500 PAN PHILLIPS, G2	
13	13677	1	HINGE, CONTINUOUS - 11 IN	
14	60405	16	SCREW, 6-32 X .250 PAN PHILLIPS, G2	
15	60058	16	WASHER, #6 SPLIT LOCK	
16	60062	5	SCREW, 10-32 X .750 PAN PHILLIPS, G2	
17	A0002957109	1	PANEL CONTROL - MLT4060 MITSU ANALOG	MLT4060MV
	A0002957108	1	PANEL CONTROL MLT4060 KUB ANALOG	MLT4060/80KV
18	65388	1	LIGHT, INDICATOR RED, 12VDC	
19	65963	1	BREAKER, 30A, 250V, 2-POLE, STUD TERMINAL	
20	65849	1	BREAKER, 10A, 120V, 1-POLE, PUSH BUTTON	
--	35267	1	WIRE GROUP - 20A GFCI	
--	A0001349805	1	WIRE GROUP - 30A TWIST-LOCK	
--	35269	1	WIRE GROUP - LIGHT SWITCHES	
--	35266	1	WIRE GROUP - LED LIGHT BOARD	
--	35271	1	WIRE GROUP - 6KW CONTROL BOX	
--	35270	1	WIRE GRP, 6KW KUBOTA LT TOWER CNTRL BOX	MLT4060MV
--	68441	1	WIRE GRP, 6KW MITSU/KUB LT TOWER CNTRL BOX	MLT4060/80KV

CONTROL BOX ASSEMBLY - POWERZONE (IF EQUIPPED)

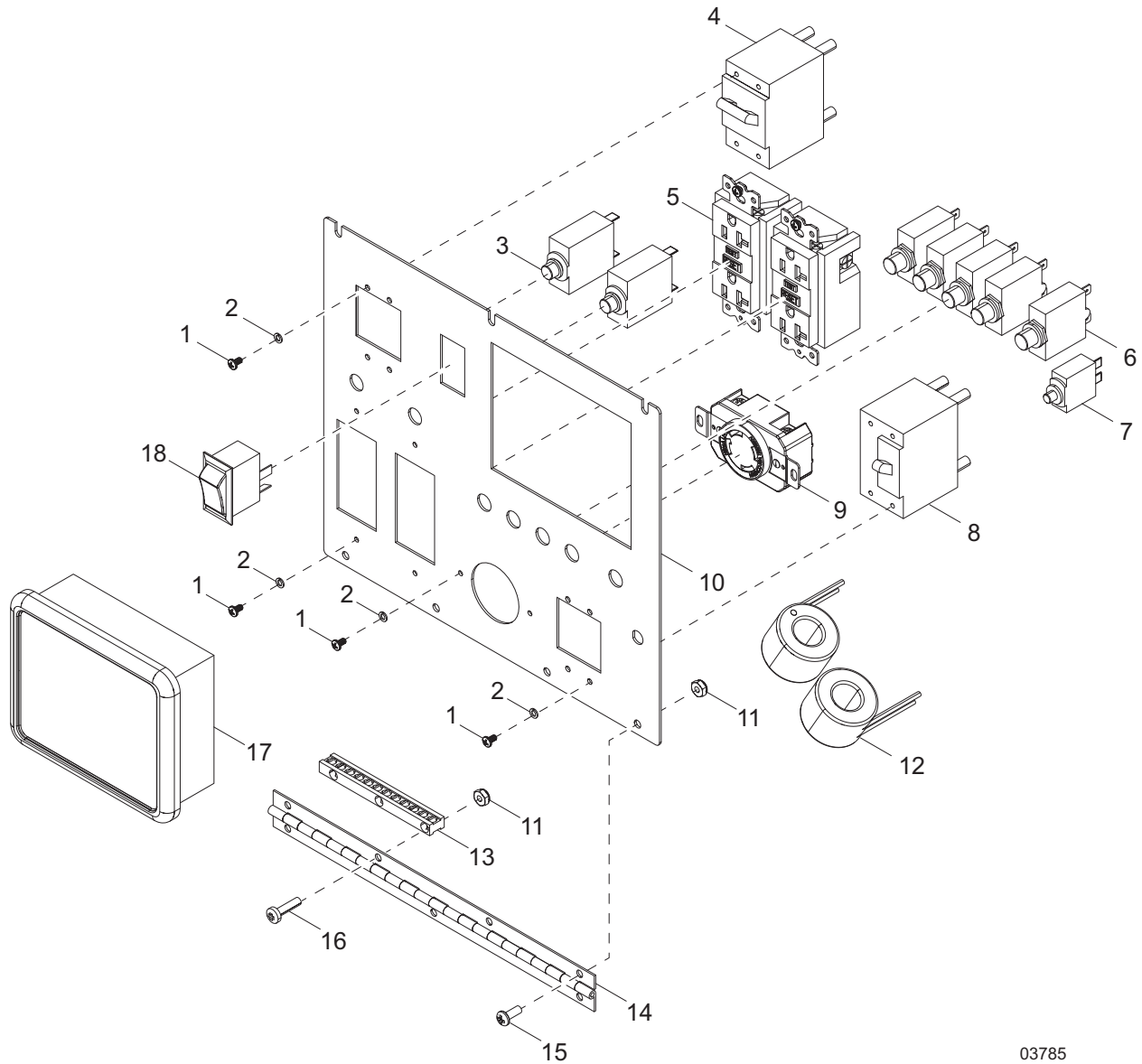


03786

CONTROL BOX ASSEMBLY- POWERZONE (IF EQUIPPED)

Item	Part No.	Qty	Description	Notes
1	60062	6	SCREW, 10-32 X .750 PAN PHILLIPS, G2	
2	14219	5	STRAIN RELIEF - .750 ROMEX W/NUT	
3	65490	1	STRAIN RLF, 1.00 ROMEX W/NUT	
4	60277	6	SCREW, 10-32 X .500 PAN PHILLIPS, G2	
5	61037	1	PLUG, HOLE 1.75 DIA BLACK	
6	68080	1	BLOCK, TERMINAL - 2 POSITION	
7	60061	6	NUT, 10-32 NYLK Z	
8	60746	2	PLUG, HOLE 1.094 RECESSED - BLACK	
9	65096	1	PLUG, RELAY RECEPTACLE	
10	65049	1	RELAY, 12V 30/40A N.O. W/DIODE	
11	29759	4	RELAY,12V COIL,120-240 VAC RATED	
12	38447B	1	BRACKET, RELAY	
13	66013	1	BLOCK, TERMINAL - 14 POSITION, 30A, 600V	
14	A0002936359	1	STB BOX CONTROL - MLT4000	
15	63105	6	NUT, 8-32 U-CLIP, G5	
16	69836	1	ASSEMBLY, CONTROL PANEL 6KW PZ	<i>Page 30</i>
17	60526	6	SCREW, 8-32 X .500 PAN PHILLIPS, G2	
--	10000045317	1	HARNESS ENG MITSU MLTX060 ELEC GOV PZ	
--	68197	1	WIRE GRP, ENGINE HARNESS PZ	
--	69862	2	ASSY, GENERATOR HARNESS - 6KW 60HZ	
--	68752	1	WIRE GROUP, BOX MLT	
<i>INTERIOR LIGHT: (if equipped)</i>				
A	11947	1	LIGHT, INTERIOR W/SWITCH	
B	60364	4	SCREW, 10-16 X .500 STANDARD HEX, G2	

CONTROL PANEL ASSEMBLY - POWERZONE (IF EQUIPPED)



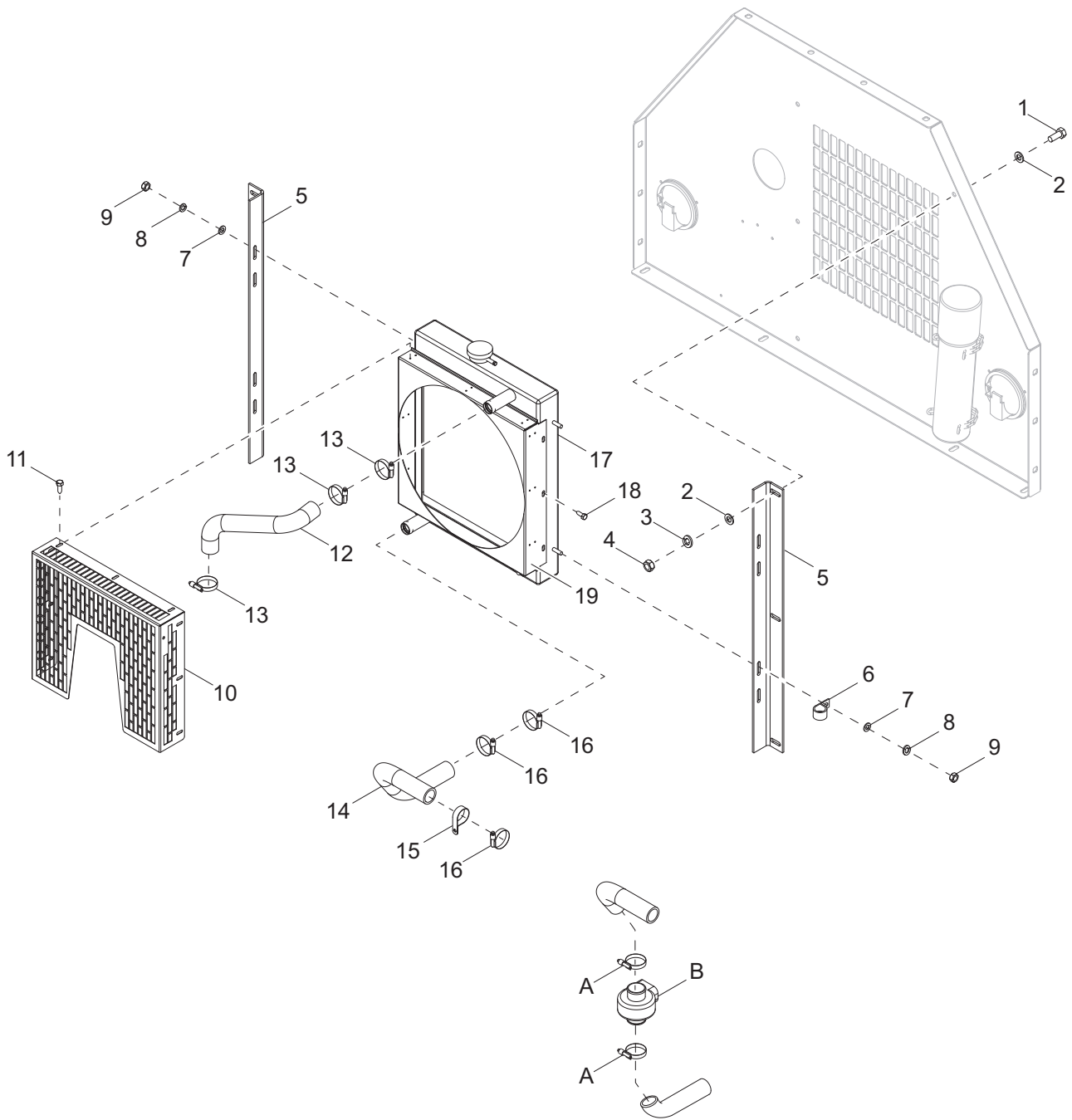
03785

CONTROL PANEL ASSEMBLY - POWERZONE (IF EQUIPPED)

Item	Part No.	Qty	Description	Notes
1	60405	16	SCREW, 6-32 X .250 PAN PHILLIPS, G2	
2	60058	16	WASHER, #6 SPLIT LOCK	
3	65849	2	BREAKER, 10A, 120V, 1-POLE, PUSH BUTTON	
4	65963	1	BREAKER, 30A, 250V, 2-POLE, STUD TERMINAL	
5	14130	2	RECEPTACLE, 120V/20A GFI (5-20R) UL 2003	
6	15568	5	BREAKER, 15A 120V 1 POLE - PUSH BUTTON	
7	65850	1	BREAKER, 10A, 240V, 1-POLE PUSH BUTTON	
8	65849	2	BREAKER, 10A, 120V, 1-POLE, PUSH BUTTON	
9	65488	1	ASSEMBLY, 30A TWIST LOCK L14 R	
10	A0002930726	1	PANEL CONTROL - MLT4080-PZ	
11	60061	4	NUT, 10-32 NYLK ZC	
12	66255	2	TRANSFORMER, CURRENT 100:5 WIRES	
13	14204	1	KIT, GROUND BAR	
14	13677	1	HINGE, CONTINUOUS - 11 IN	
15	60277	2	SCREW, 10-32 X .500 PAN PHILLIPS, G2	
16	60062	2	SCREW, 10-32X.750 PAN PHIL G2 ZC	
17	CALL*	1	CONTROLLER, DEEP SEA L401-002-A3 MLT6/8KW	
18	66995	1	SWITCH, ROCKER DPST ON-OFF	

Note: *To order replacement controller, contact Generac Mobile Products with unit serial number

COOLING SYSTEM ASSEMBLY

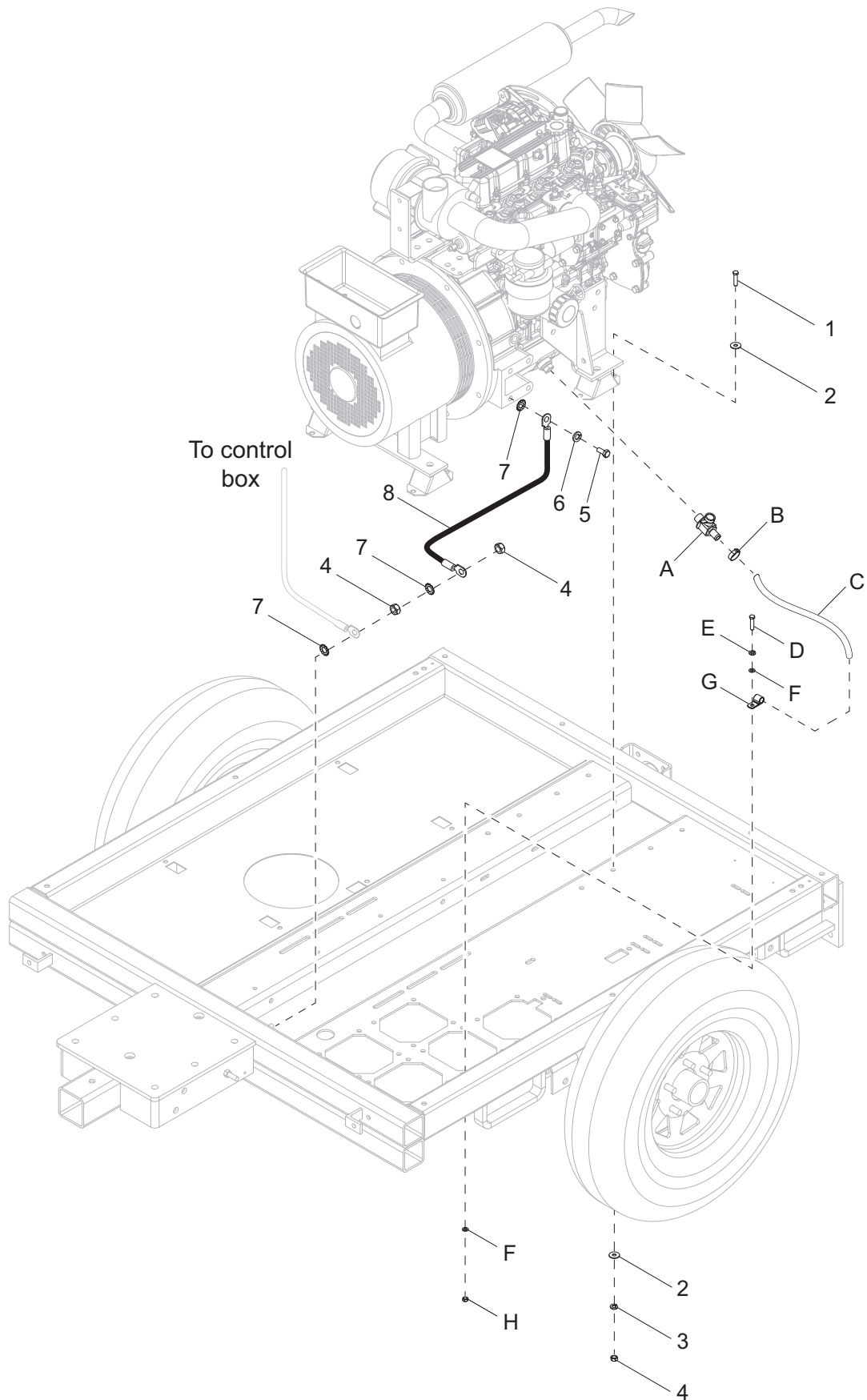


01166

COOLING SYSTEM ASSEMBLY

Item	Part No.	Qty	Description	Notes
1	60690	6	SCREW, .375-16 X 1.0 STANDARD HEX, SS	
2	60698	12	WASHER, .375 FLAT .875/.040, SS	
3	60703	6	WASHER, .375 SPLIT LOCK, SS	
4	60140	6	NUT, .375-16 HEX, G5	
5	11683B	2	BRACKET, RADIATOR	
6	15627	2	CLAMP, TUBING - .625 HEAVY DUTY	
7	60119	4	WASHER, .312 FLAT .875/.070	
8	60271	4	WASHER, .312 SPLIT LOCK	
9	60032	4	NUT, M8-1.25 HEX, G8.8	
10	A0000214702	1	STB FAN GUARD MLTX060M G2 L3E	
11	60364	9	SCREW, 10-16 X .500 STD HEX, G2, SELF-TAP	
12	16687	1	HOSE, RADIATOR - UPPER	MLT4060/80KV only
--	32383SRV	1	HOSE, RADIATOR - UPPER	MLT4060MV only
13	60316	2	CLAMP, HOSE - SAE 032 (1.56-2.50)	MLT4060/80KV only
--	15422	2	CLAMP, HOSE - SAE 020 (.75-1.75)	MLT4060MV only
14	12350	1	HOSE, RADIATOR - LOWER	MLT4060/80KV only
--	16688SRV	1	HOSE, RADIATOR - LOWER	MLT4060MV only
15	60716	1	CLAMP, TUBING - 1.50 LIGHT DUTY	MLT4060/80KV only
16	15422	2	CLAMP, HOSE - SAE 020 (.75-1.75)	
17	A0000335661	1	RADIATOR, W/FAN GUARD - WELDED	
18	60115	6	SCREW, M6-1.00X12 SFLG HEX G8.8 ZC	
19	A0000175263	1	STB SHROUD FAN ML	
<i>ENGINE HEATER: (if equipped)</i>				
A	15422	2	CLAMP, HOSE - SAE 020 (.75-1.75)	
B	65649	1	HEATER, ENGINE - LOWER RADIATOR HOSE	

ENGINE AND GENERATOR TO UNIT

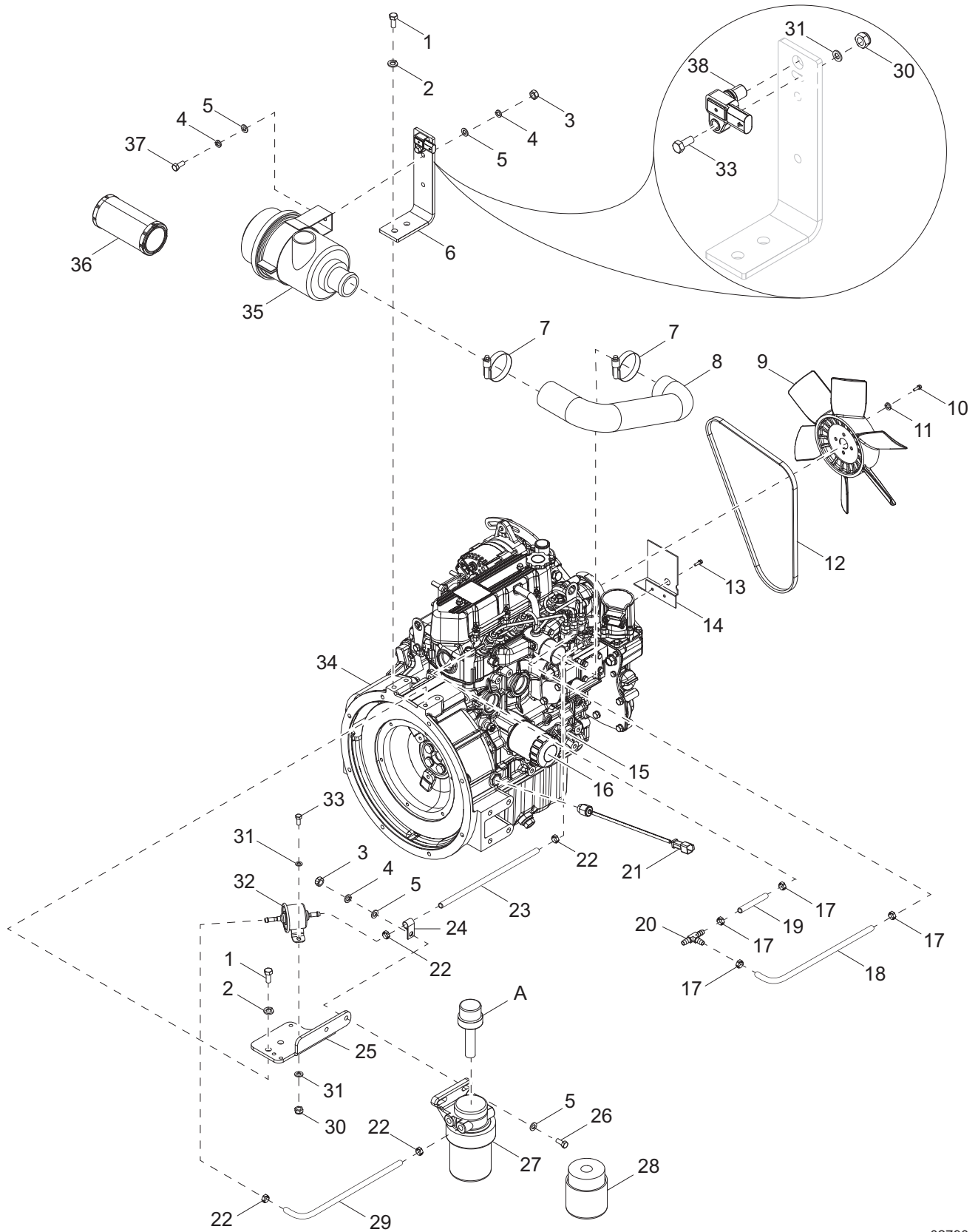


01167

ENGINE AND GENERATOR TO UNIT

Item	Part No.	Qty	Description	Notes
1	60205	8	SCREW, .375-16 X 1.0 STANDARD HEX, G5	
2	60698	16	WASHER, .375 FLAT .875/.040, SS	
3	60206	8	WASHER, .375 SPLIT LOCK	
4	60140	10	NUT, .375-16 HEX, G5	
5	60495	1	SCREW, M10-1.25 X 16 - STANDARD HEX, G8.8	
6	60026	1	WASHER, M10 - SPLIT LOCK	
7	60747	3	WASHER, .375 INTERNAL STAR	
8	16155	1	ASSEMBLY, WIRE - ENGINE/CHASSIS GROUND	
<i>DRAIN VALVE: (if equipped)</i>				
A	60774	1	VALVE, DRAIN 22MM - 1.5 WITH NIPPLE	MLT4060/80KV only
--	60766	1	VALVE, DRAIN 18MM - 1.5 WITH NIPPLE	MLT4060MV only
B	60365	1	CLAMP, HOSE - SAE 010 (.56-1.06)	
C	50201	3 ft	HOSE, .625 INCH, 200 PSI, CLASS A	MLT4060/80KV only
--	A0001533482	1	HOSE, OIL DRAIN, .375 X 20, SAE 30R7	MLT4060MV only
D	60205	1	SCREW, .375-16 X 1.0 STANDARD HEX, G5	MLT4060/80KV only
E	60206	1	WASHER, .375 FLAT .875/.040, SS	MLT4060/80KV only
F	60698	2	WASHER, .375 FLAT .875/.040, SS	MLT4060/80KV only
G	60716	1	CLAMP, TUBING - 1.50 LIGHT-DUTY	MLT4060/80KV only
H	60144	1	NUT, .25-20 NYLOCK, G5	MLT4060/80KV only
<i>SILENT PACK: (if equipped)</i>				
--	18496	1	FITTING, BUSHING - 2.50 OD X 2.0 ID	
--	50709	3 ft	HOSE, .625 INCH., 300 PSI	
--	60498	1	FITTING, PLUG - .750NPT SQUARE DRIVE	
--	60774	1	VALVE, DRAIN WITH NIPPLE	
--	60365	2	CLAMP, HOSE - SAE 010 (.56-1.06)	
--	28213	1	FITTING, .750NPT STREET ELBOW	
--	62076	1	FITTING, STRAIGHT - .750MNPT X .625 BARB	

ENGINE ASSEMBLY - MITSUBISHI LEFT SIDE



02790

ENGINE ASSEMBLY - MITSUBISHI LEFT SIDE

Item	Part No.	Qty	Description	Notes
1	60422	4	SCREW, M10-1.25 X 25 STANDARD HEX, G8.8	
2	60026	4	WASHER, M10 SPLIT LOCK	
3	60285	6	NUT, .312-18 HEX, G2	
4	60271	6	WASHER, .312 SPLIT LOCK	
5	60119	8	WASHER, .312 FLAT .875/.070	
6	10000045650	1	BRACKET, AIR CLEANER - BLACK	
7	60316	2	CLAMP, HOSE - SAE 032 (1.56-2.50)	
8	16589	1	HOSE, AIR CLEANER	
9	16742	1	FAN, MITSUBISHI	
10	63288	4	SCREW, M6-1.0 X 12 PAN HEAD, G8.8	
11	60286	4	WASHER, .250 SPLIT LOCK	
12	16692	1	V-BELT, MITSUBISHI	
13	N/A	2	BOLT W/WASHER	
14	11691SRV	1	BRACKET, LOWER RADIATOR HOSE GUARD	
15	11148	1	DIPSTICK, OIL	
16	70124	1	FILTER, OIL	
17	60778	4	CLAMP, HOSE - .188, CRIMP STYLE	
18	14211	1.04 ft	HOSE, FUEL - .188 ID, 50 PSI, SAE 30R7	
19	14211	.16 ft	HOSE, FUEL - .188 ID, 50 PSI, SAE 30R7	
20	17145	1	FITTING, TEE - .188 X .188 X .188 BARB, NYLON	
21	A0000116158	1	PICK-UP, MAG	
22	60777	4	CLAMP, HOSE - .312, CRIMP STYLE	
23	50018	1 ft	HOSE, FUEL - .312 ID, 50 PSI, SAE 30R7	
24	60649	1	CLAMP, TUBING - .750 HEAVY-DUTY	
25	10000044996	1	BRACKET, FUEL FILTER/PUMP, BLACK	
26	60256	2	SCREW, .312-18 X 1.5 STANDARD HEX, G5	
27	10000022110	1	FILTER, FUEL HEAD AND ELEMENT	includes element
28	A0000430610	1	FILTER, FUEL, ELEMENT	
29	50018	1.04 ft	HOSE, FUEL - .312 ID, 50 PSI, 30R7	
30	60144	3	NUT, .250-20 NYLOCK, G5	
31	60243	5	WASHER, .250 FLAT .735/.060	
32	13278SRV	1	FUEL PUMP, ELECTRIC	
33	60393	3	SCREW, .250-20 X 1.0 STANDARD HEX, G5	
34	10000037445	1	ENGINE - MITSUBISHI LE3, T4 EXT SVC	
35	10000021718	1	FILTER, AIR, W/BRACKET	includes element
36	10000035428	1	ELEMENT, AIR FILTER	
37	61061	2	SCREW, .312-18 X .875 STANDARD HEX, G5	
38	72175SRV	1	SENSOR, ATMOSPHERIC PRESSURE	
--	16677	1	SWITCH, OIL PRESSURE	
--	70021	1	COVER, AIR FILTER HOUSING	
--	12912	1	CAP, DUST	

HEATED FUEL FILTER: (if equipped)

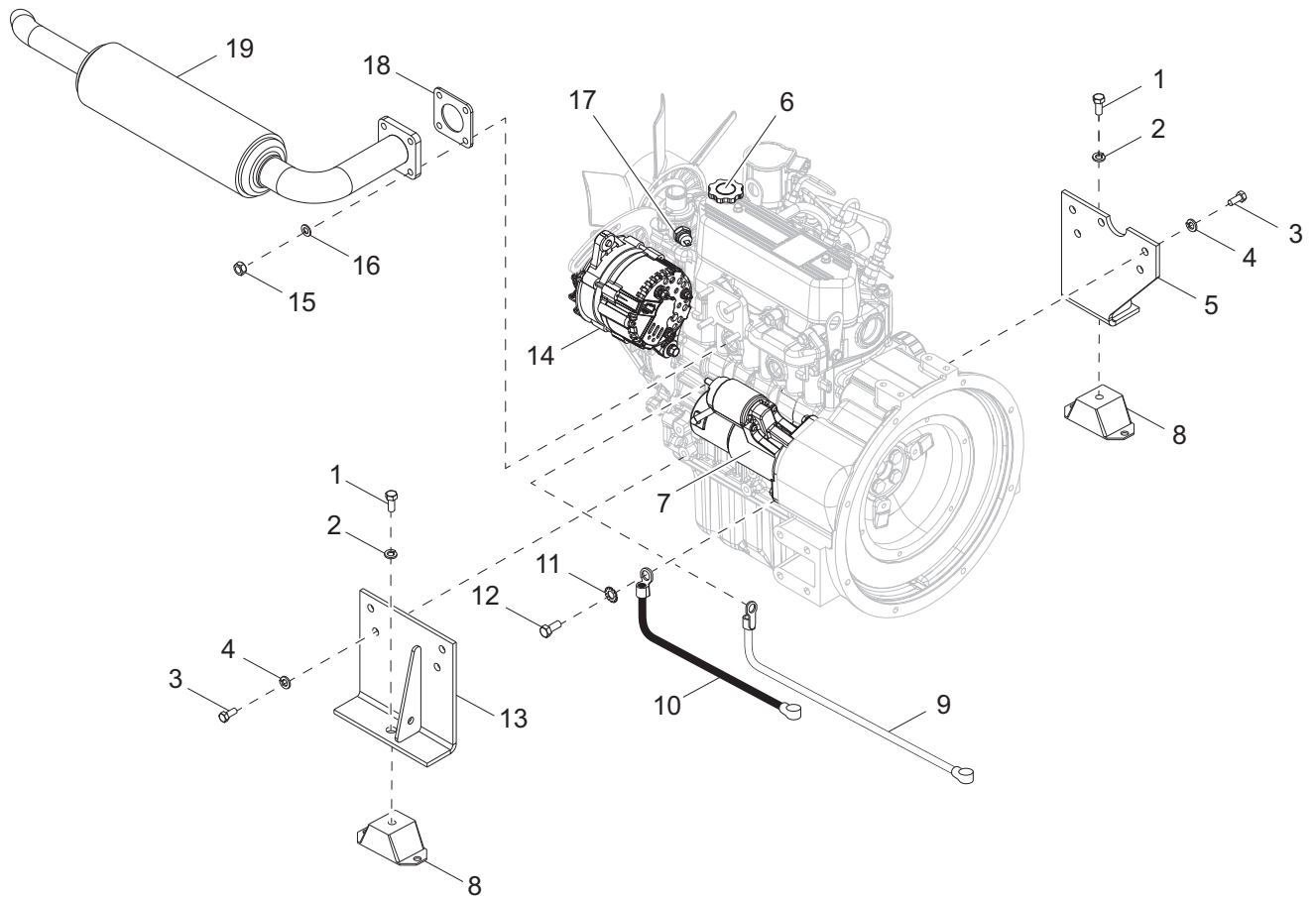
A	13876	1	KIT, HEATER - FUEL FILTER, MITSUBISHI
---	-------	---	---------------------------------------

COLD WEATHER BELT: (if equipped)

--	10386	1	BELT, COLD WEATHER - MITSUBISHI, 6KW & 8KW
----	-------	---	--

Note: Engine and generator parts used in all Generac Mobile Products equipment carry the Original Equipment Manufacturer (OEM) warranty unless otherwise stated. OEM warranty parts must be purchased through an OEM dealer. Please contact Generac Mobile Products with questions.

ENGINE ASSEMBLY - MITSUBISHI RIGHT SIDE



03843

ENGINE ASSEMBLY - MITSUBISHI RIGHT SIDE

Item	Part No.	Qty	Description	Notes
1	60275	2	SCREW, .500-13 X 1.0 STANDARD HEX, G5	
2	60702	2	WASHER, .500 SPLIT LOCK, SS	
3	60422	8	SCREW, M10-1.25 X 25 STANDARD HEX, G8.8	
4	60026	8	WASHER, M10 SPLIT LOCK	
5	70130B	1	WELDMENT, ENGINE MOUNT - RIGHT, BLACK	
6	11147	1	CAP, OIL FILLER	
7	70232	1	STARTER	
8	15241	2	ISOLATOR, RUBBER - 80-200 LBS, 2 IN. WIDE	
9	A0000245046	1	CABLE, BATTERY - 38 IN RED 0.375 LUG 45 DEG	
10	15073	1	CABLE, BATTERY - 24 IN, 4GA BLACK, .438 LUG	
11	60747	1	WASHER, .375 INTERNAL STAR	
12	60495	1	SCREW, M10-1.25 X 16 STANDARD HEX, G8.8	
13	16554B	1	WELDMENT, ENGINE MOUNT - LH, BLACK	
14	A0000083440	1	ALTERNATOR	
15	60032	4	NUT, M8 - 1.25 HEX, G8.8	
16	60029	4	WASHER, M8 SPLIT LOCK	
17	16678	1	SWITCH, TEMPERATURE SENSOR	
18	11042SRV	1	GASKET, MUFFLER	
19	13710	1	MUFFLER, 30° FLARE	
--	10000041832	1	HARNESS, ENGINE - MITSUBISHI	

SILENT PACK: (if equipped)

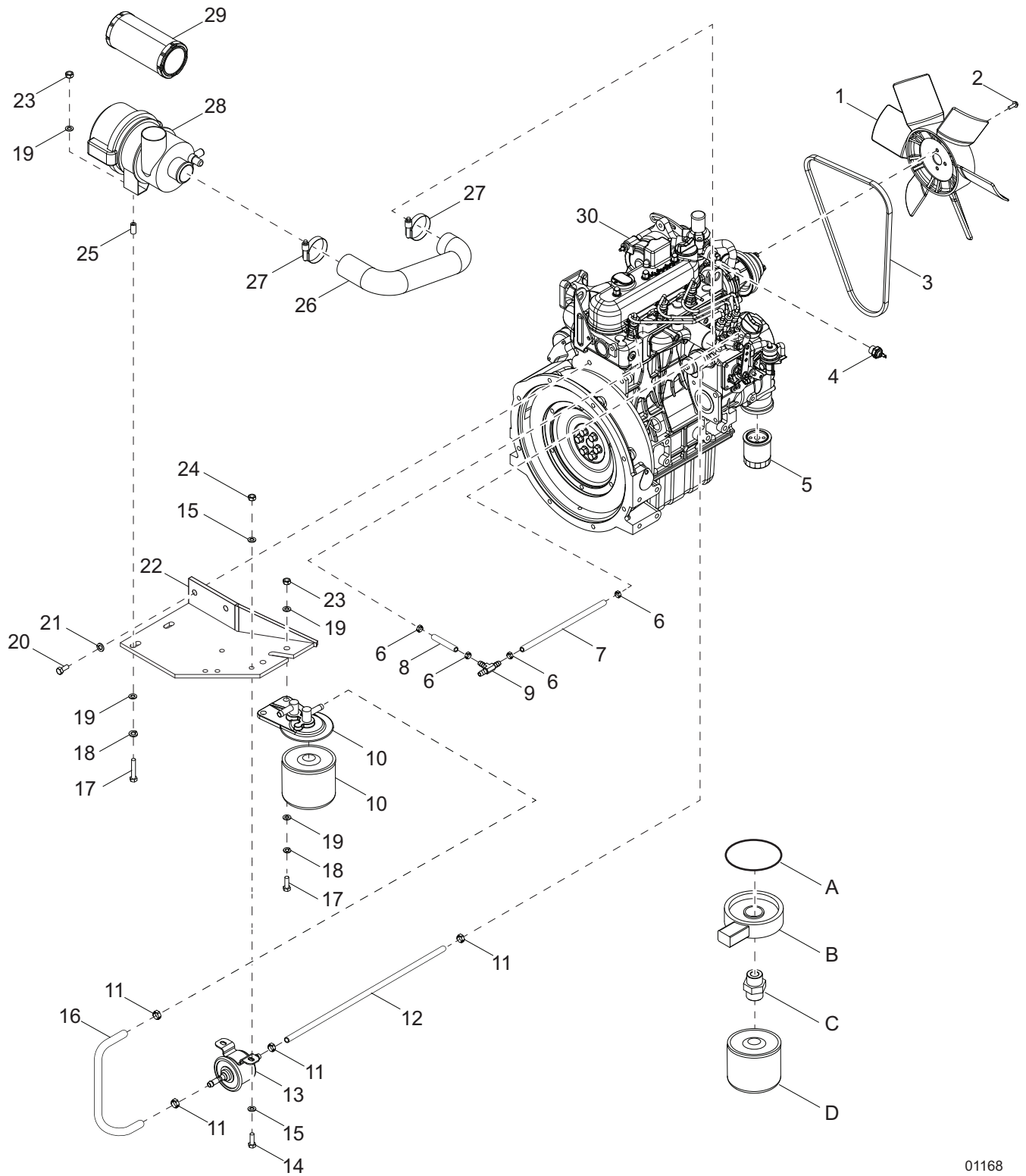
--	34776	1	MUFFLER, MITSUBISHI MODIFIED	
----	-------	---	------------------------------	--

BATTERY DISCONNECT: (if equipped)

--	69896	1	CABLE, BATTERY, JUMPER 33.0" 4 GA RED - .375 LUG	
----	-------	---	--	--

Note: Engine and generator parts used in all Generac Mobile Products equipment carry the Original Equipment Manufacturer (OEM) warranty unless otherwise stated. OEM warranty parts must be purchased through an OEM dealer. Please contact Generac Mobile Products with questions.

ENGINE ASSEMBLY - KUBOTA LEFT SIDE



01168

ENGINE ASSEMBLY - KUBOTA LEFT SIDE

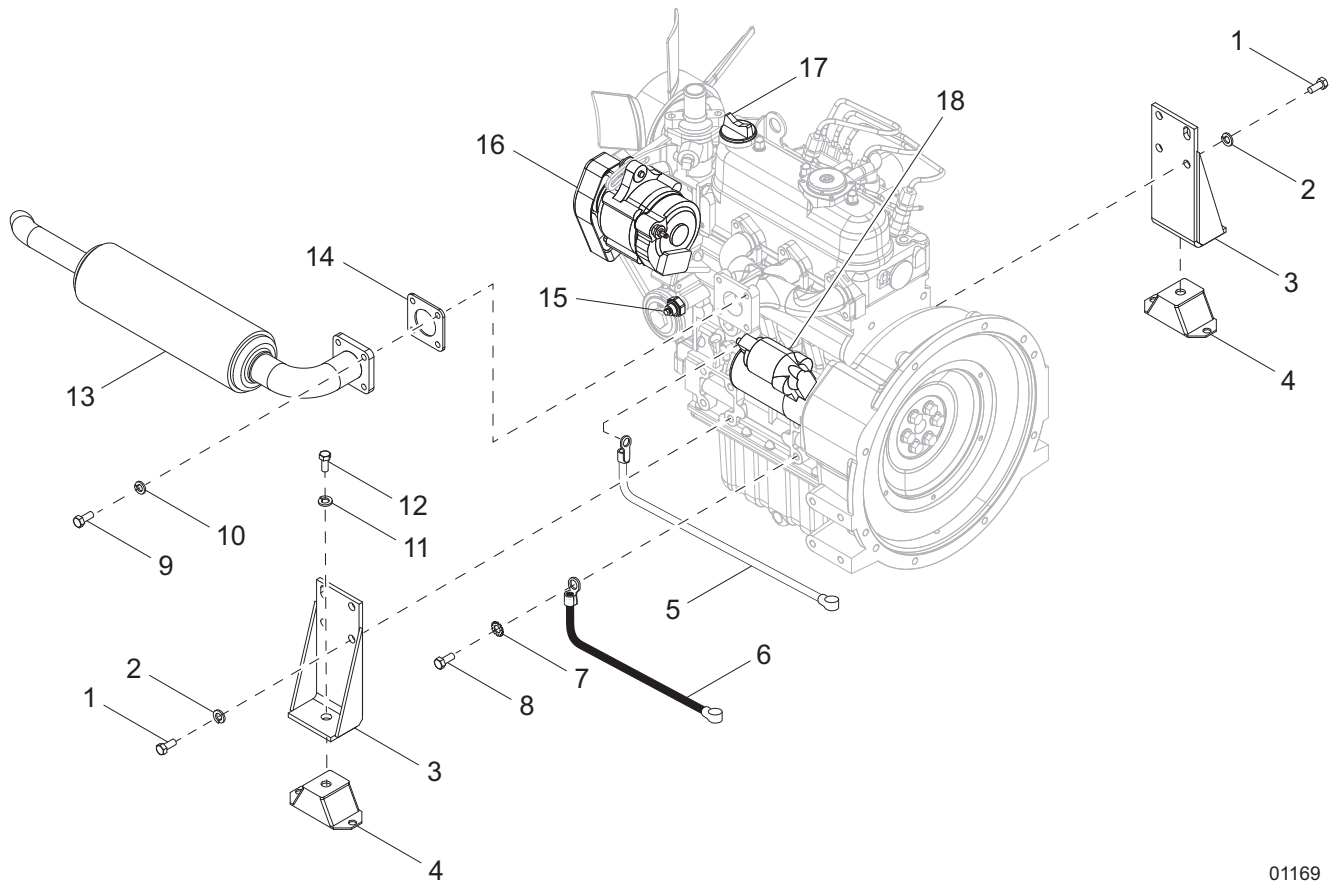
Item	Part No.	Qty	Description	Notes
1	15495	1	FAN, ENGINE	
2	60087	4	SCREW, M6-1.0 X 16 SERRATED FLANGE HEX, G8.8	
3	11628	1	BELT, V	
4	14099	1	SWITCH, COOLANT TEMPERATURE	
5	10775	1	FILTER, OIL	
6	60778	4	CLAMP, HOSE - .188, CRIMP STYLE	
7	14211	1.3 ft	HOSE, FUEL - .188 ID, 50 PSI, SAE 30R7	
8	14211	.167 ft	HOSE, FUEL - .188 ID, 50 PSI, SAE 30R7	
9	17145	1	FITTING, T - .188 X .188 X .188 BARB, NYLON	
10	A0003466536	1	ASSY-FILTER-FUEL-G34	includes element
--	A0003466535	1	FILTER-FUEL-G34	
11	60777	4	CLAMP, HOSE - .312, CRIMP STYLE	
12	50018	1.67 ft	HOSE, FUEL - .312 ID, 50 PSI, SAE 30R7	
13	13278SRV	1	PUMP, FUEL	
14	60393	2	SCREW, .250-20 X 1.0 STANDARD HEX, G5	
15	60243	4	WASHER, .250 FLAT .735/.060	
16	50018	1 ft	HOSE, FUEL - .312 ID, 50 PSI, SAE 30R7	
17	62001	4	SCREW, .312-18 X 1.25 STANDARD HEX, G5	
18	60271	4	WASHER, .312 SPLIT LOCK	
19	60119	8	WASHER, .312 FLAT .875/.070	
20	61082	2	SCREW, M8-1.25 X 20 STANDARD HEX, G8	
21	60029	2	WASHER, M8 SPLIT LOCK	
22	13483B	1	WELDMENT, FILTER BRACKET	
23	60285	4	NUT, .312-18 HEX, G2	
24	60144	2	NUT, .250-20 NYLOCK, G5	
25	41235ZY	2	SPACER, .75 OD X .44 ID X 1.0 LONG	
26	16589	1	HOSE, AIR CLEANER	
27	60316	2	CLAMP, HOSE - SAE 032 (1.56-2.50)	
28	10000021718	1	FILTER, AIR, ASSEMBLY	includes element
29	10000035428	1	ELEMENT, AIR FILTER	
30	13310	1	ENGINE, KUBOTA - D1005-E3BG1-MGM-1	

HEATED FUEL FILTER: (if equipped)

A	13834	1	GASKET, HEATED FUEL FILTER
B	13682	1	HEATER, FUEL FILTER
C	10407	1	ADAPTER, HEATED FUEL FILTER
D	13515	1	ELEMENT, HEATED FUEL FILTER
--	10662	1	HARNESS, FUEL FILTER HEATER - OUTSIDE
--	13684	1	HARNESS, FUEL FILTER HEATER - INSIDE

Note: Engine and generator parts used in all Generac Mobile Products equipment carry the Original Equipment Manufacturer (OEM) warranty unless otherwise stated. OEM warranty parts must be purchased through an OEM dealer. Some Kubota engine parts are serial number specific. Please contact **Kubota Engine America Corp.** or the Generac Mobile Products Technical Service Department for information regarding engine parts.

ENGINE ASSEMBLY - KUBOTA RIGHT SIDE



01169

ENGINE ASSEMBLY - KUBOTA RIGHT SIDE

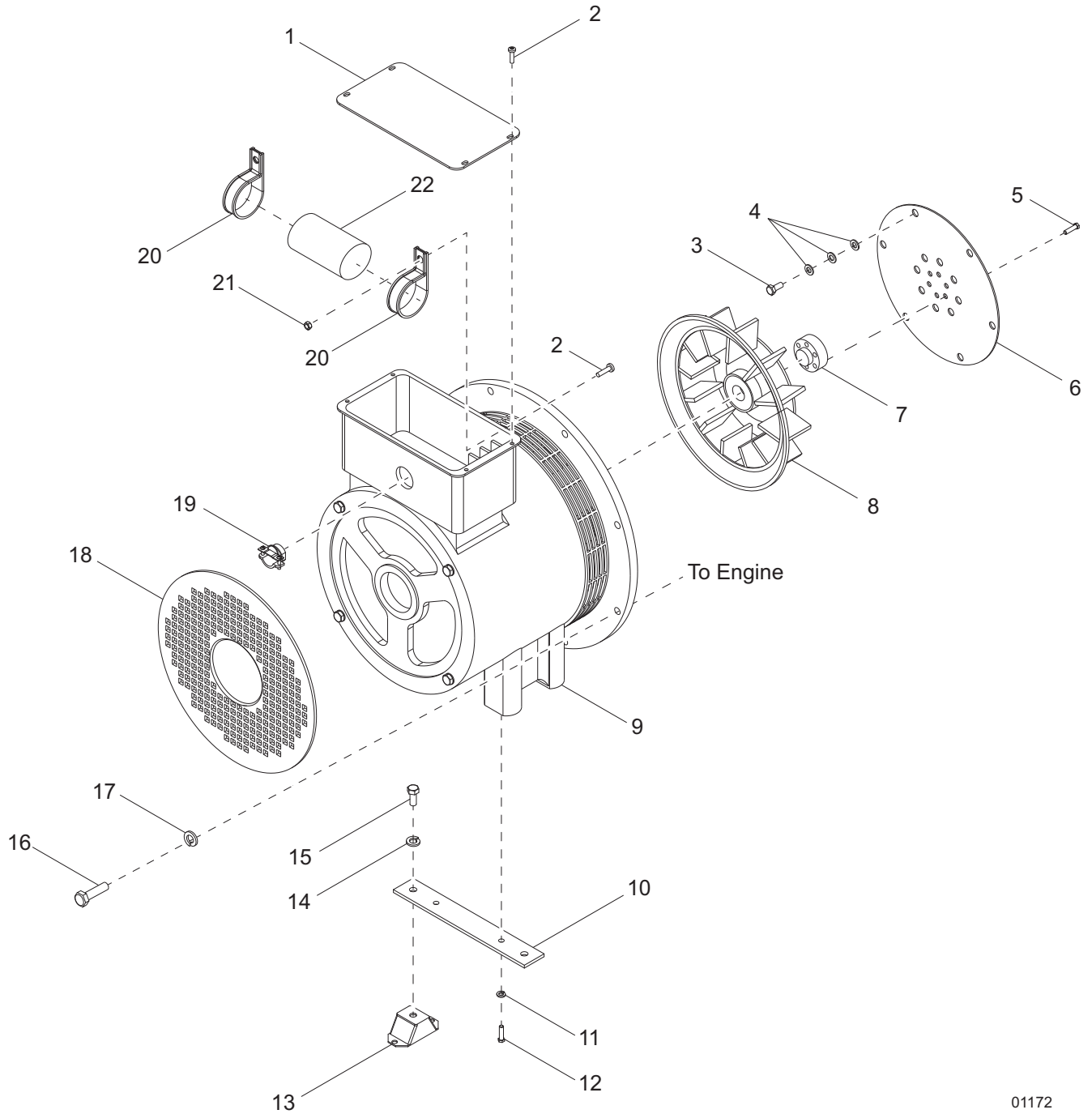
Item	Part No.	Qty	Description	Notes
1	60422	8	SCREW, M10-1.25 X 25 STANDARD HEX, G8.8	
2	60026	8	WASHER, M10 SPLIT LOCK	
3	12338B	2	WELDMENT, ENGINE MOUNT	
4	15241	2	ISOLATOR, RUBBER - 80-200 LBS, 2 INCH WIDE	
5	A0000245046	1	CABLE BATTERY 38IN RED 0.375 LUG 45 DEG	
6	15073	1	CABLE, BATTERY - 24 IN., 4GA BLK., .438 IN LUG	
7	60747	1	WASHER, .375 INTERNAL STAR	
8	60495	1	SCREW, M10-1.25 X 16 STANDARD HEX, G8.8	
9	63168	4	SCREW, M8-1.25 X 30 STANDARD HEX	
10	60029	4	WASHER, M8 SPLIT LOCK	
11	60702	2	WASHER, .500 SPLIT LOCK, SS	
12	60275	2	SCREW, .500-13 X 1.0 STANDARD HEX, G5	
13	13709	1	MUFFLER, 30 DEGREE FLARE	
14	11042SRV	1	GASKET, MUFFLER	
15	14099	1	SWITCH, COOLANT TEMPERATURE	
16	12486	1	ALTERNATOR	
17	12484	1	CAP, OIL FILLER	
18	30582	1	STARTER	
--	10461	1	HARNESS, ENGINE, KUBOTA 6/8KW MLT	MLT4060KV
--	16153	1	HARNESS, ENGINE - KUBOTA	MLT4080KV

SILENT PACK: (if equipped)

--	36391	1	MUFFLER, KUBOTA MODIFIED	
----	-------	---	--------------------------	--

Note: Engine and generator parts used in all Generac Mobile Products equipment carry the Original Equipment Manufacturer (OEM) warranty unless otherwise stated. OEM warranty parts must be purchased through an OEM dealer. Some Kubota engine parts are serial number specific. Please contact **Kubota Engine America Corp.** or the Generac Mobile Products Technical Service Department for information regarding engine parts.

GENERATOR ASSEMBLY



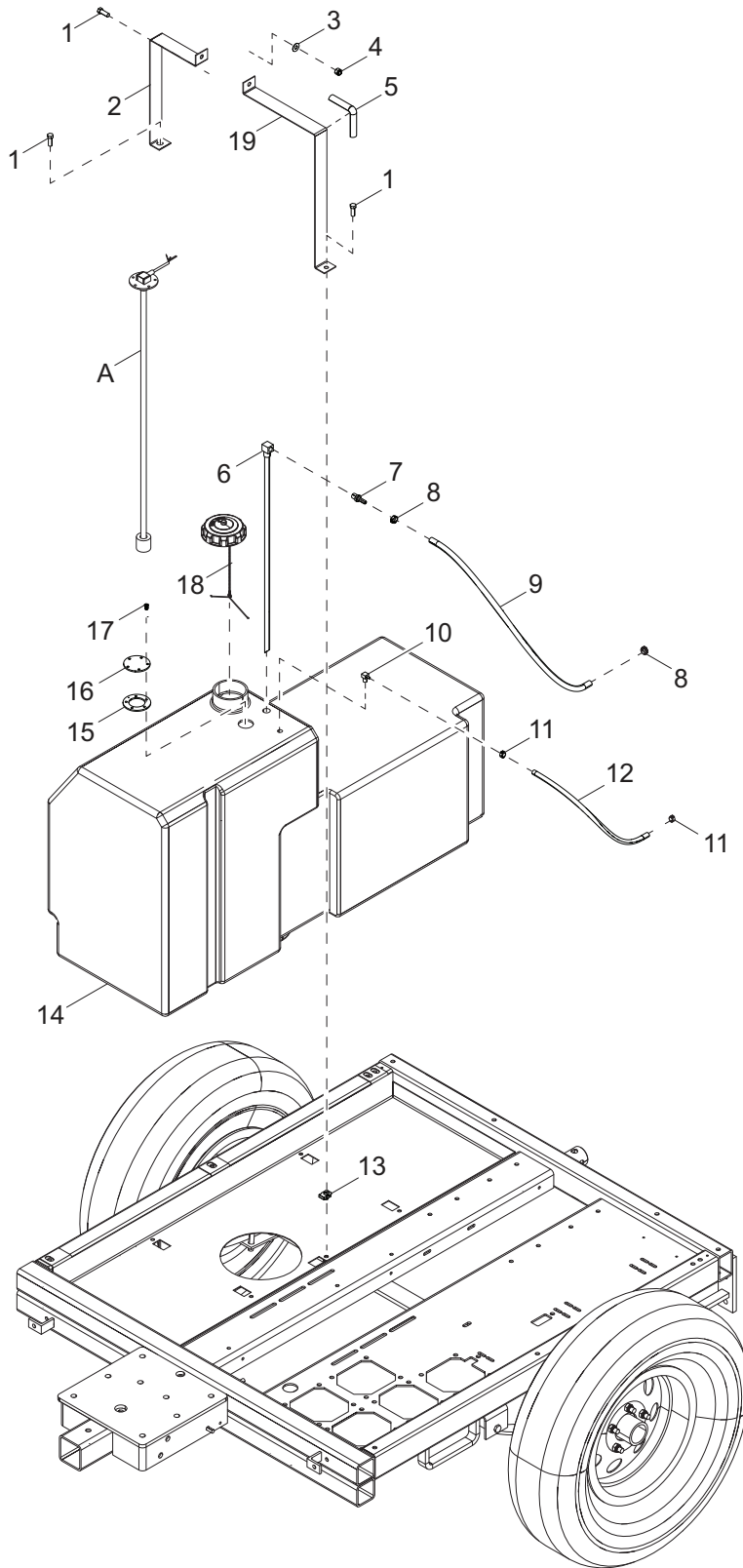
01172

GENERATOR ASSEMBLY

Item	Part No.	Qty	Description	Notes
1	12736	1	COVER, GENERATOR - 6KW	
2	60398	6	SCREW, 10-32 X 5.0 PAN PHILLIPS, SS	
3	60168	6	SCREW, .312-18 X .750 STANDARD HEX, G5	MLT4060/80KV
--	60165	6	SCREW, M8-1.25 X 16 STANDARD HEX, G10	MLT4060MV only
4	60166	18	WASHER, M8 FLAT	MLT4060MV (qty 12 only)
5	11336	6	SCREW, .375-24 X 1.75	
6	16123	1	PLATE, DRIVE - SAE 6.5	
7	11339	1	SPACER, GENERATOR DRIVE PLATE	
8	12527	1	FAN, GENERATOR	
--	12329	1	SEAL, PANCAKE BEARING - 6KW	Included w/item 9,
--	12328	1	BEARING, PANCAKE - 6KW	Included w/item 9,
9	16556	1	GENERATOR, MARATHON - 6KW	MLT4060MKV
--	10486	1	GENERATOR, MARATHON - 8KW	MLT4080KV
10	15045B	1	BRACKET, GENERATOR	
11	60206	2	WASHER, .375 SPLIT LOCK	
12	60205	2	SCREW, .375-16 X 1.0 STANDARD HEX, G5	
13	15241	2	ISOLATOR, RUBBER - 80-200 LBS, 2 INCH WIDE	
14	60702	2	WASHER, .500 SPLIT LOCK, SS	
15	60275	2	SCREW, .50-13 X 1.0 STANDARD HEX, G5	
16	60352	8	SCREW, .375-16 X 1.25 STANDARD HEX, G5	MLT4060/80KV
--	60494	8	SCREW, M10-1.25 X 30 STANDARD HEX, G8.8	MLT4060MV
17	60206	8	WASHER, .375 SPLIT LOCK	MLT4060/80KV
--	60026	8	WASHER, M10 SPLIT LOCK	MLT4060MV
18	12327	1	COVER, PANCAKE CASE	
19	14219	1	STRAIN RELIEF - .750 ROMEX WITH NUT	
20	16395	2	CLAMP, CAPACITOR	
21	61045	2	NUT, 10-32 SERRATED FLANGE	
22	35132	1	CAPACITOR, 25MF 440V - 6KW	
--	16153	1	HARNESS, GENERATOR - 6KW	

Note: Engine and generator parts used in all Generac Mobile Products equipment carry the Original Equipment Manufacturer (OEM) warranty unless otherwise stated. OEM warranty parts must be purchased through an OEM dealer. Please contact Generac Mobile Products with questions.

FUEL TANK TO UNIT



03784

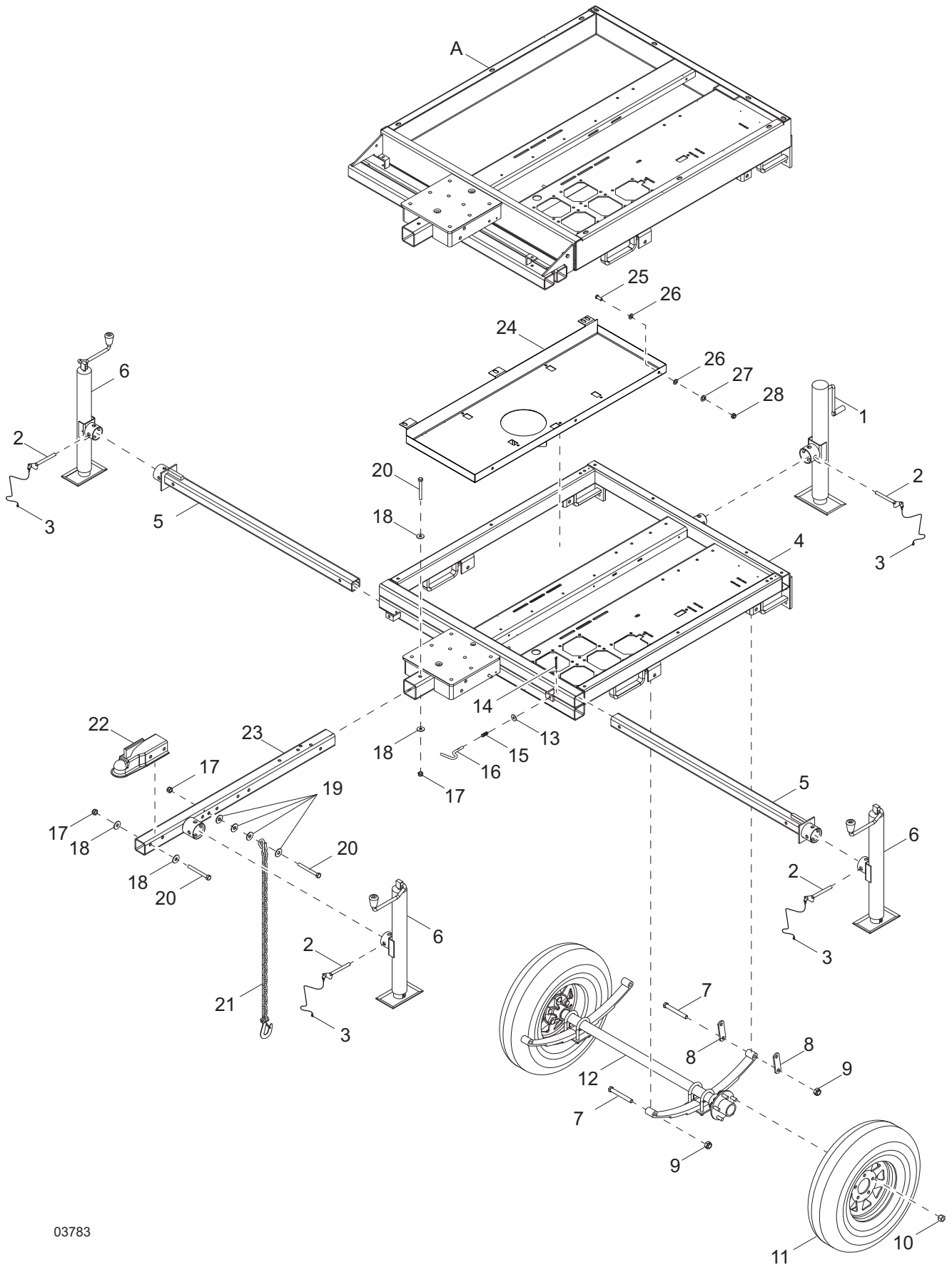
FUEL TANK TO UNIT

Item	Part No.	Qty	Description	Notes
1	60334	3	SCREW, .375-16 X 1.00 STANDARD HEX, G5	
2	A0001991206	1	STB WELDMENT FUEL TANK STRAP - OUTSIDE	
3	60698	1	WASHER, .375 FLAT .875/.040, SS	
4	60358	1	NUT, .375-16 NYLOCK, G5	
5	50197	1	WEATHERSTRIPPING	
6	12259	1	FUEL PICK-UP TUBE - 24 IN	
7	15142	1	FITTING, STRT - .250NPT X .312 BARB	
8	60777	2	CLAMP, HOSE - .312, CRIMP STYLE	
9	50018	3.0 ft	HOSE, FUEL .312 ID 50 PSI SAE 30R7	
10	16271	1	FITTING, 90° - .250NPT X .188 BARB	
11	60778	2	CLAMP, HOSE - .188, CRIMP STYLE	
12	14211	2.5 ft	HOSE, FUEL - .188 ID, 50 PSI, SAE 30R7	
13	60505	4	NUT, .312-18 U-CLIP - LONG TYPE	
14	39998	1	TANK, FUEL - 56 GALLON	
15	N/A	1	GASKET, PLATE COVER	w/ A0001557886
16	N/A	1	PLATE, COVER	w/ A0001557886
17	N/A	5	SCREW, 10-24 X .500 PAN PHILLIPS, G2	w/ A0001557886
18	12137	1	CAP, FUEL TANK, WITH LANYARD	
19	A0001991204	1	STB WELDMENT FUEL TANK STRAP - INSID	
--	A0001557886	1	KIT, SENDER PLATE	Inc items 15,16,17

FUEL SENDING UNIT (if equipped)

A	68830	1	MLT4000 FUEL SENDING UNIT ASSEMBL
---	-------	---	-----------------------------------

TRAILER ASSEMBLY



03783

TRAILER ASSEMBLY

Item	Part No.	Qty	Description	Notes
1	13050	1	JACK, SIDE WIND - TUBE MOUNT	
2	23256	4	PIN, JACK - 2000 LB, TUBE MOUNT	
3	12647	4	CABLE, TETHER - JACK PIN AND COVER	
4	13335B	1	WELDMENT, CHASSIS	
5	69813Z	2	WELDMENT, OUTRIGGER TUBE JACK MOUNT	
6	13051	3	JACK, TOP WIND	
7	60503	6	SCREW, SHACKLE, .562-18 X 3.0 STD HEX, G5	
8	19637	4	PLATE, SHACKLE BRACKET	
9	60504	6	NUT, .562-18 LOCK, G5	
10	60096	10	NUT, .500-20 LUG, G5	
11	15976B	2	WHEEL, ST175/80D13, 1360 LB	
12	13131	1	AXLE, 3000IB	
13	35275	2	WASHER, .375 FLAT .416 X .820 X .057	
14	35274	2	COTTER PIN - .078 X 1.0	
15	35273	2	SPRING, COMPRESSION, .562 X 1.5	
16	35272	2	PIN, PLUNGER - .375	
17	62221	4	NUT, .500-13 NYLOCK, G5	
18	60309	3	WASHER, FLAT 1.060/.090	
19	60416	8	WASHER, .500 FLAT 1.375/.090	
20	50215	4	SCREW, .500-13 X 4.0 STD HEX, G5	
21	23367	2	CHAIN, SAFETY	
22	16830	1	COUPLER, 2.0 BALL/2.5 CHANNEL	
23	70184B	1	WELDMENT,- TUBE MOUNT JACK	
24	12358B	1	PAN, FUEL TANK - FLAT FRAME, BLAC	
25	60690	3	SCREW, .375-16X1.000 STD HEX 18-8 SS	
26	60698	6	WASHER, .375 FLAT .875/.040 18-8 SS USS	
27	60703	3	WASHER, .375 SPLIT LOCK 18-8 SS	
28	60140	3	NUT, .375-16 HEX G5 ZC	

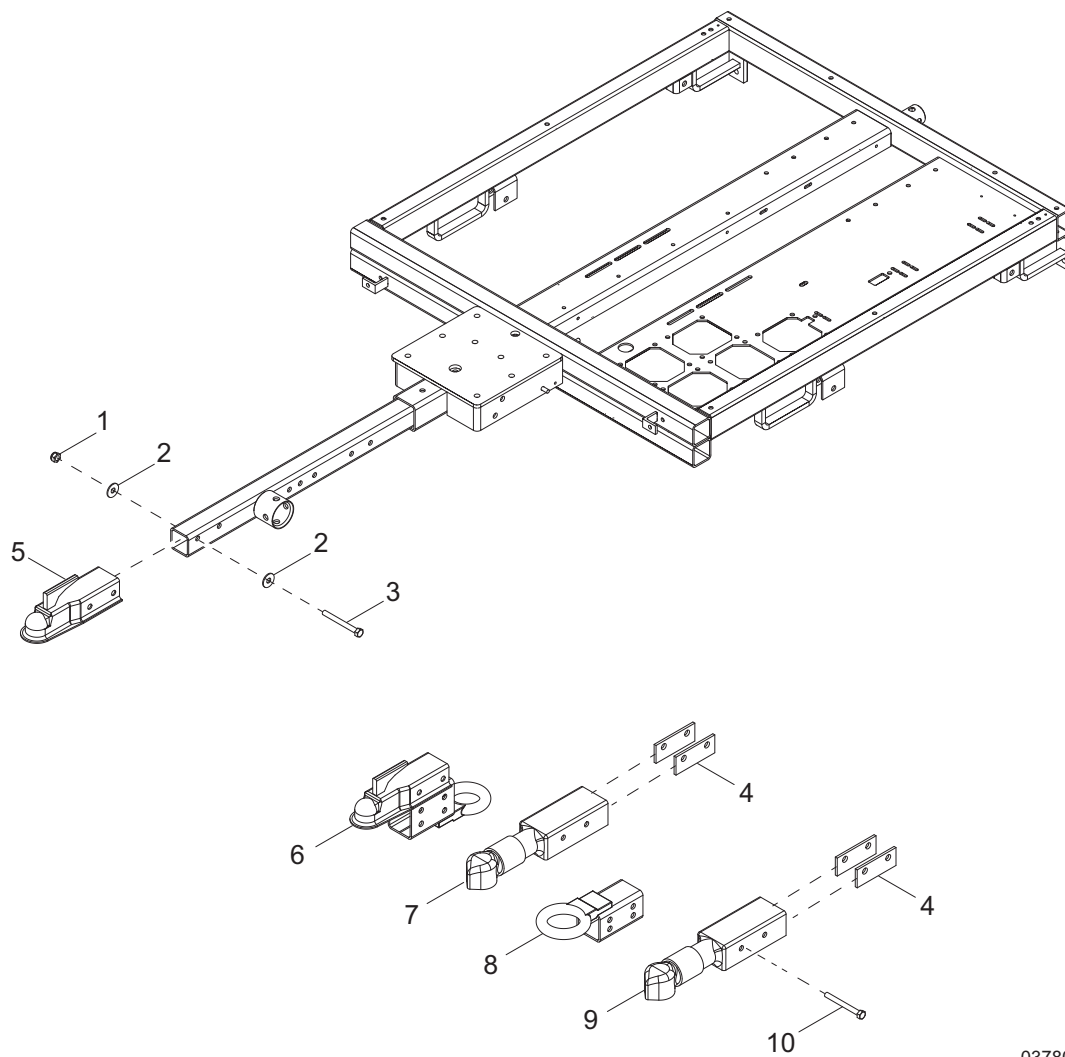
CONTAINMENT: (if equipped)

A	33243B	1	WELDMENT, CHASSIS, CONTAINMENT	
---	--------	---	--------------------------------	--

TRAILER PLUG ADAPTERS: (if equipped)

--	65463	1	ADAPTER, TRAILER WIRING - FLAT 4 TO ROUND 6 PIN	
--	65464	1	ADAPTER, TRAILER WIRING - FLAT 4 TO ROUND 7 PIN	
--	65465	1	ADAPTER, TRAILER WIRING - FLAT 4 TO ROUND 7 BLADE	

TRAILER - HITCH OPTIONS

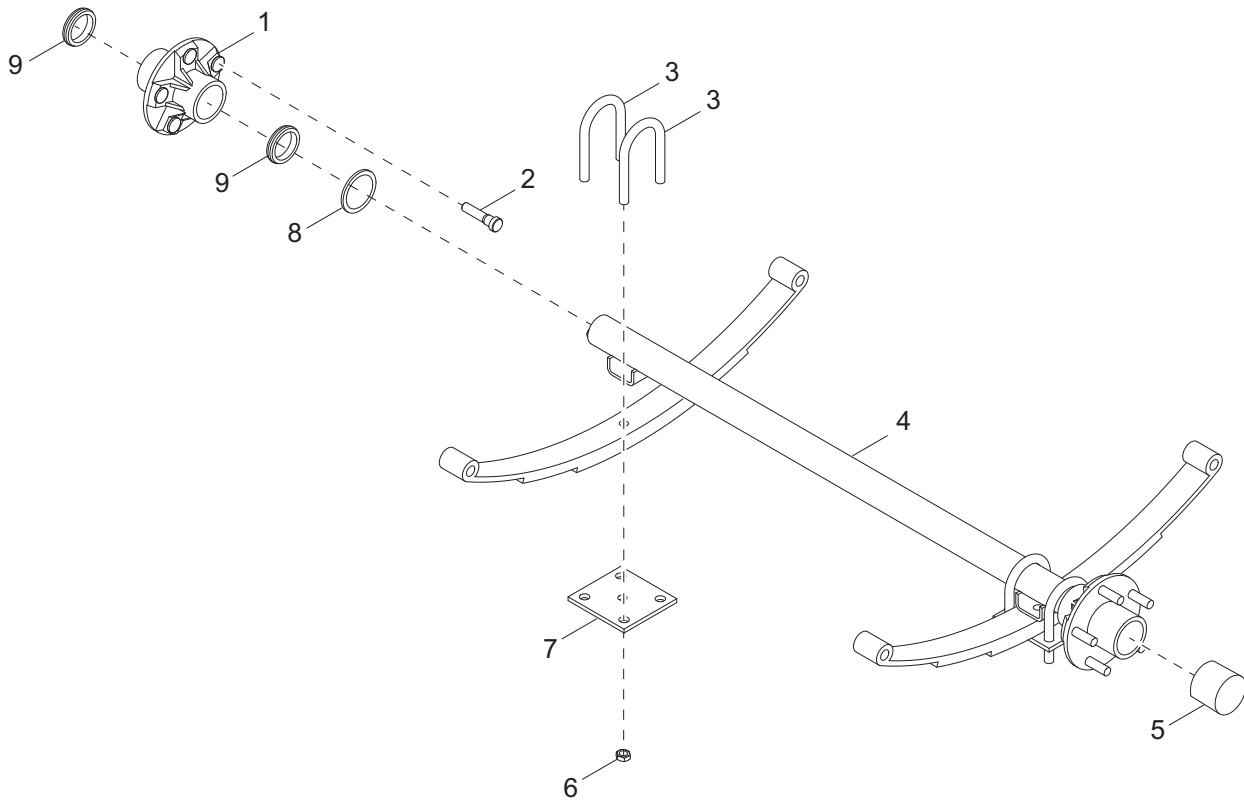


03780

TRAILER - HITCH OPTIONS

Item	Part No.	Qty	Description	Notes
1	62221	2	NUT, .500-13 NYLOCK, G5	
2	60309	4	WASHER, .500 FLAT 1.060/.090	
3	50215	2	SCREW, .500-13 X 4.0 STANDARD HEX, G5	
4	12155B	2	SPACER, COUPLER	
5	16830	1	COUPLER, 2.0 BALL/2.50 TONGUE	
6	34792ZC	1	WELDMENT, COMBINATION HITCH - 2.50 TONGUE	
7	13003B	1	COUPLER, 2.0 BULLDOG/3.0 TONGUE	
8	16835B	1	WELDMENT, LUNETTE RING - 3.0 X 1.0 RING/2.50	
9	17807	1	COUPLER, 2.312 BALL/3.00 CHANNEL	
10	60376	2	SCREW, .500-13 X 4.50 STANDARD HEX, G5	

AXLE ASSEMBLY

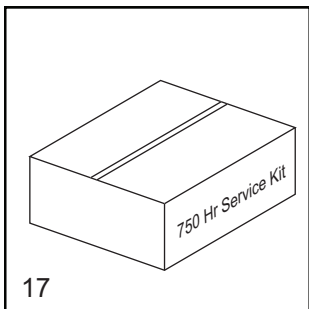
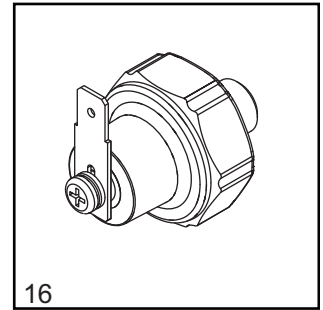
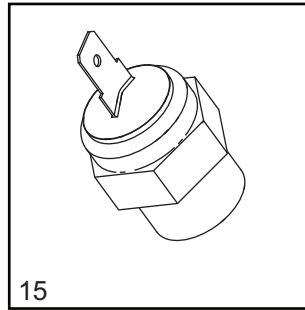
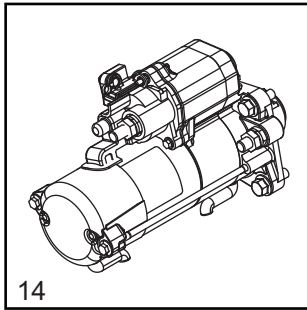
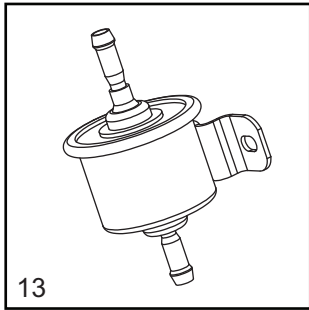
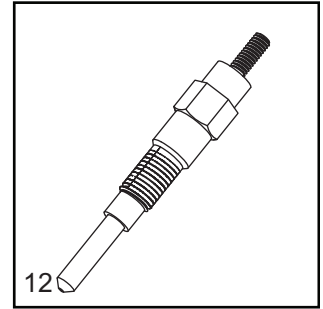
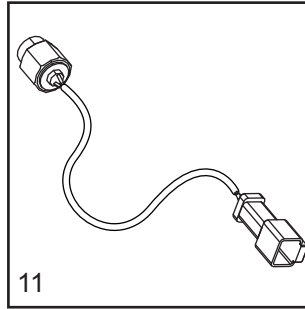
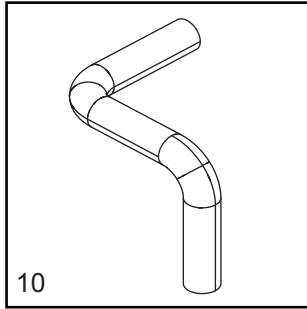
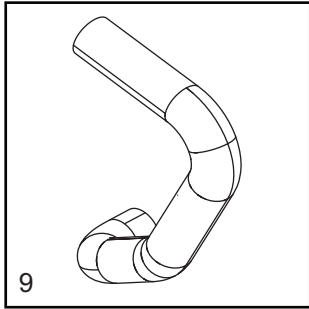
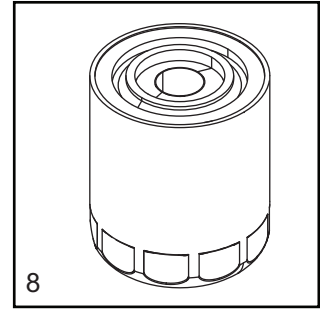
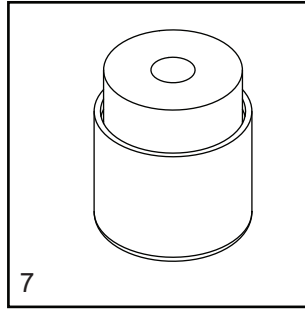
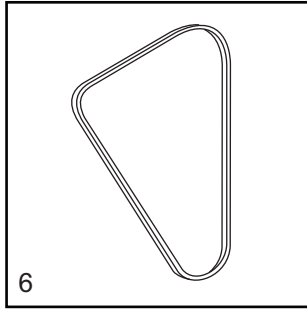
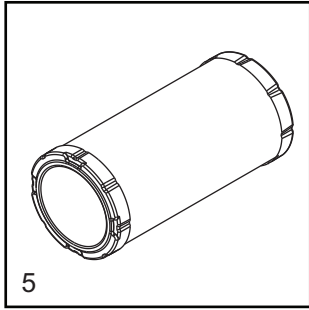
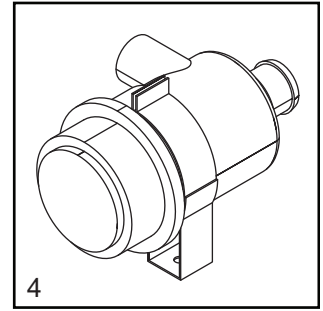
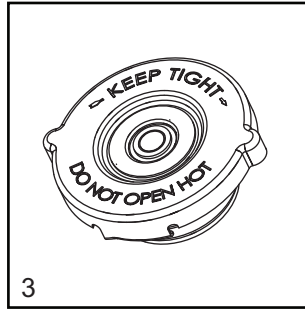
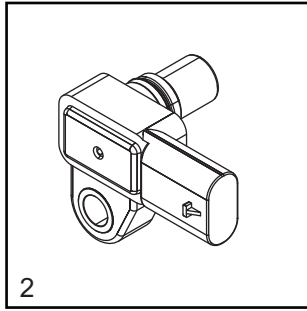
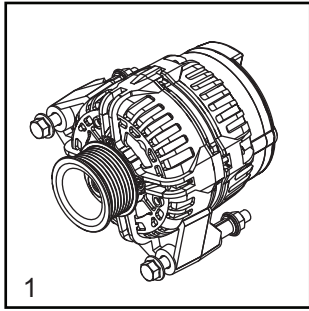


01746

AXLE ASSEMBLY

Item	Part No.	Qty	Description	Notes
1	11206	2	AXLE HUB W/STUDS AND OUTER RACES	
2	60674	10	STUD, WHEEL, .500-20 WHEEL, G8	
3	11201	4	BOLT, U - 2200 LB	
4	16593	1	AXLE, 2200 LB 56TC 45SC	
5	12460	2	CAP, WHEEL BEARING	
6	11203	8	NUT, U-BOLT, 2200 LB	
7	11202	2	TIE-PLATE, 2200 LB	
8	13000	2	SEAL - 2200 LB	
9	11511	4	BEARING, ROLLER	

RECOMMENDED SPARE PARTS - ENGINE AND SERVICE KITS - MITSUBISHI



RECOMMENDED SPARE PARTS - ENGINE AND SERVICE KITS - MITSUBISHI

ENGINE

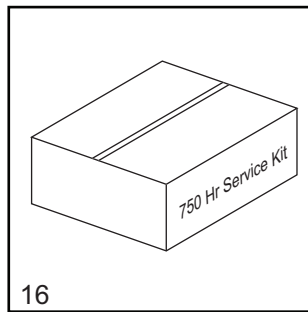
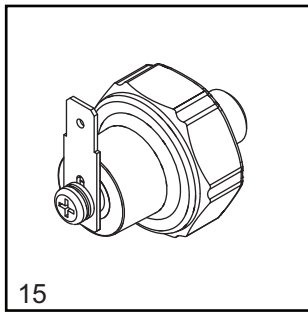
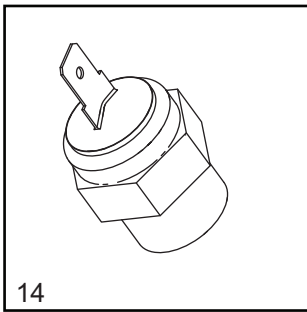
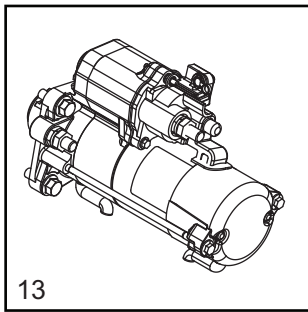
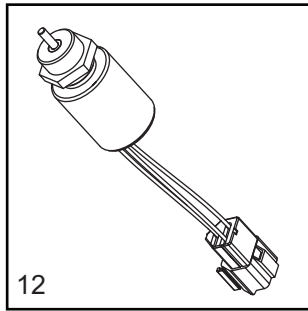
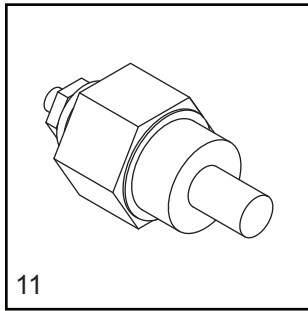
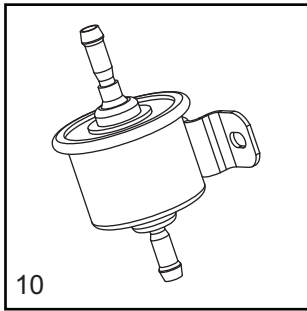
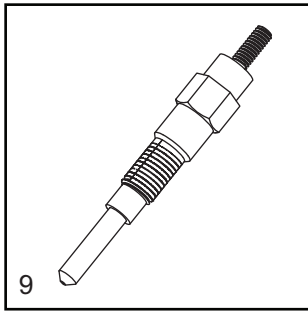
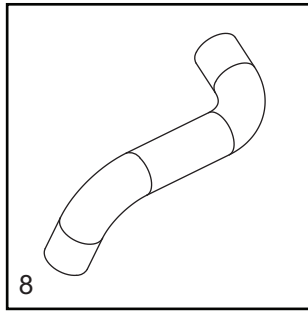
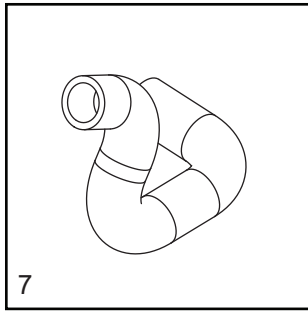
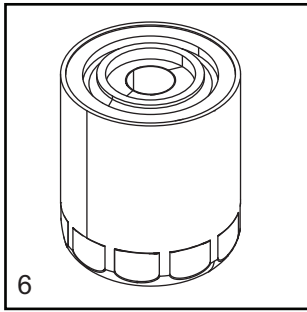
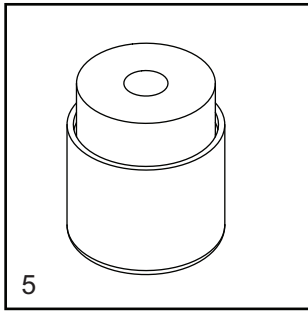
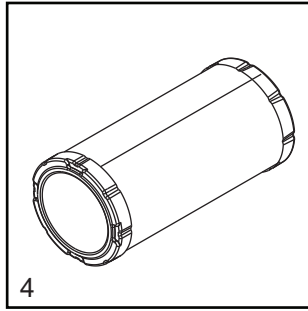
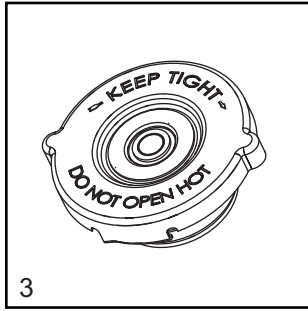
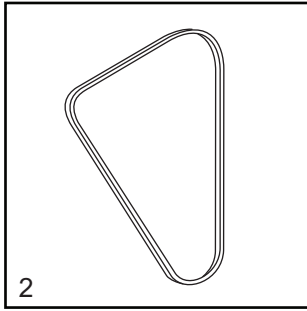
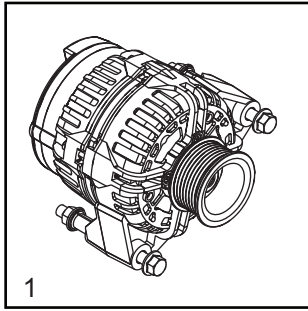
1. ALTERNATOR	A0000083440
2. ATMOSPHERIC PRESSURE SENSOR.....	72175SRV
3. CAP, FUEL TANK WITH LANYARD	16326
4. CAP, RADIATOR	19219
5. FILTER, AIR (ELEMENT)	10000035428
6. BELT	10386
7. FILTER, FUEL, MITSUBISHI.....	A0000430610
8. FILTER, OIL, MITSUBISHI (AFTER BREAK-IN 1).....	A0000630832
9. HOSE, RADIATOR - LOWER.....	16688SRV
10. HOSE, RADIATOR - UPPER.....	32383SRV
11. MAGNETIC PICK-UP	A0000116158
12. PLUG, GLOW.....	16693SRV
13. PUMP, FUEL.....	13278SRV
14. STARTER	70232
15. SWITCH, COOLANT TEMPERATURE	16678
16. SWITCH, OIL PRESSURE	16677

SERVICE KITS

17. 750 HOUR KIT	10000036108
------------------------	-------------

INCLUDES: AIR FILTER 10000035428, FUEL FILTER ELEMENT A0000430610 AND OIL FILTER A0000630832

RECOMMENDED SPARE PARTS - ENGINE AND SERVICE KITS - KUBOTA



RECOMMENDED SPARE PARTS - ENGINE AND SERVICE KITS - KUBOTA

ENGINE

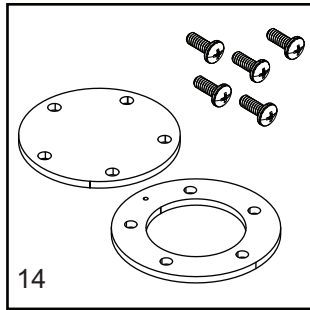
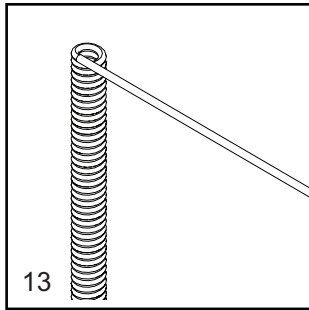
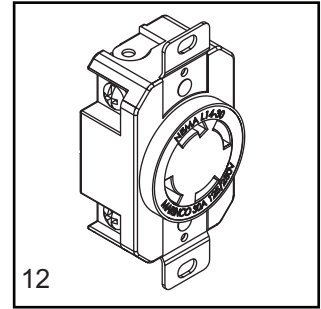
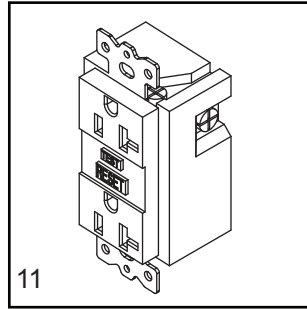
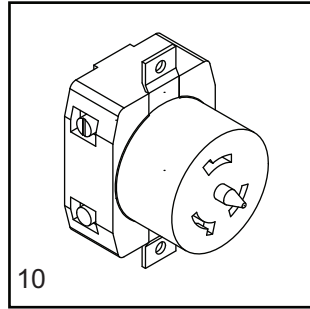
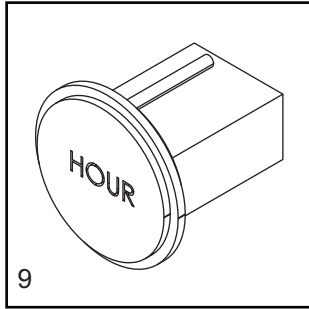
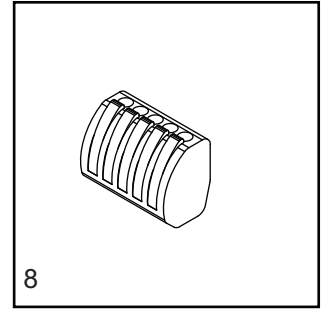
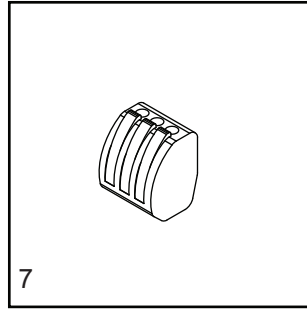
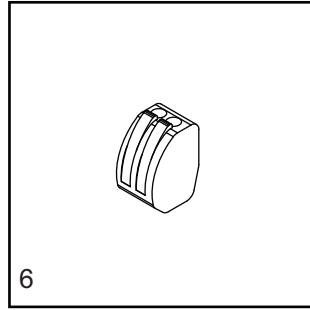
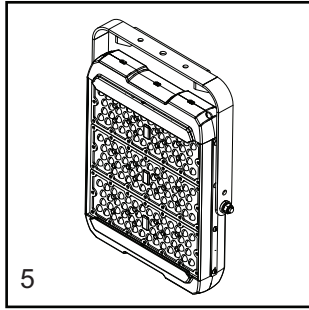
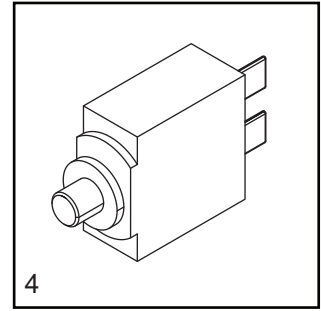
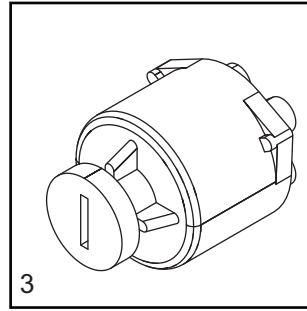
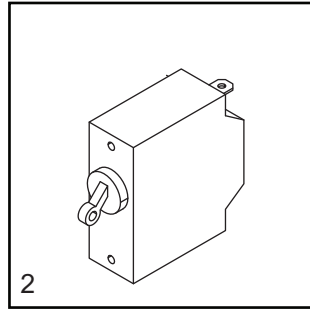
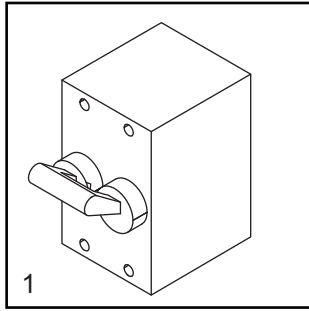
1. ALTERNATOR	12486
2. BELT, V, KUBOTA	11628
3. CAP, RADIATOR	19219
4. FILTER, AIR (ELEMENT)	10000035428
5. FILTER, FUEL ELEMENT, KUBOTA.....	A0003466535
6. FILTER, OIL, KUBOTA D1005/D1105	10775
7. HOSE, LOWER RADIATOR, KUBOTA.....	12350
8. HOSE, UPPER RADIATOR KUBOTA	36977
9. PLUG, GLOW, KUBOTA (START SN 489916).....	13238
10. PUMP, FUEL.....	13278SRV
11. SENDER, COOLANT TEMP.....	12873
12. SOLENOID, FUEL SHUTDOWN (2 WIRE).....	13018
13. STARTER- KUBOTA D1005	30582
14. SWITCH, COOLANT TEMPERATURE - KUBOTA D850	14099
15. SWITCH, OIL PRESSURE, KUBOTA D905	15375

SERVICE KITS

16. 750 HOUR KIT.....	10000036039
-----------------------	-------------

INCLUDES: AIR FILTER ELEMENT 10000035428, FUEL FILTER ELEMENT A0003466535 AND OIL FILTER 10775

RECOMMENDED SPARE PARTS - ELECTRICAL

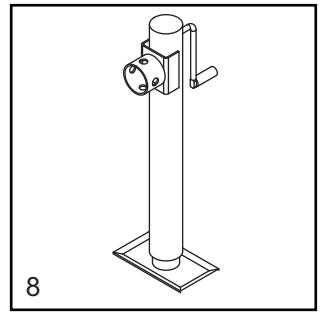
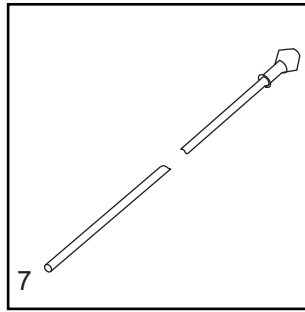
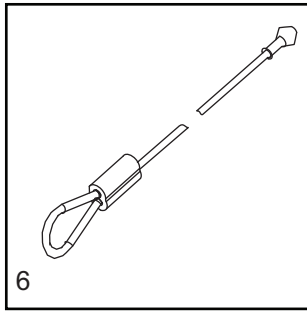
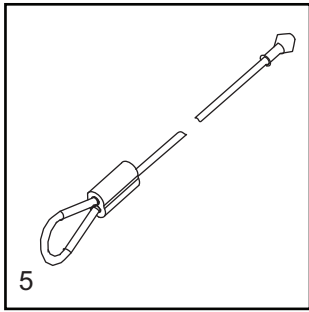
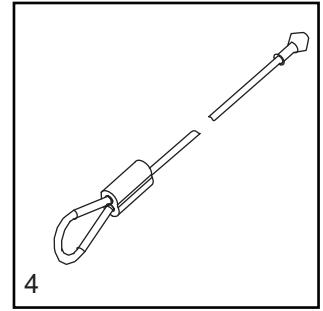
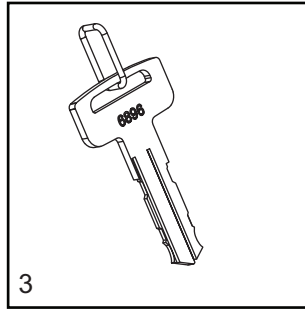
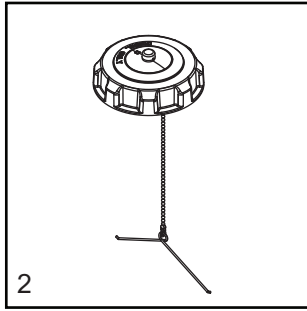
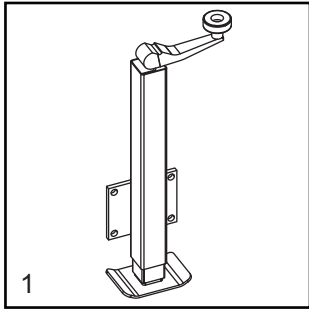


RECOMMENDED SPARE PARTS - ELECTRICAL

ELECTRICAL

1. BREAKER, 70A, 250V, 2 POLE, AM STUD TERMINAL	60736
2. BREAKER, 15A 250V, 1 POLE.....	14249
3. SWITCH, KEY	15195SRV
4. BREAKER, 10A 240V, 1 POLE - PUSH BUTTON.....	65850
5. ASSEMBLY, 320W LED LIGHT FIXTURE.....	A0000948785
6. CONNECTOR, 2 POSITION (QTY - 4)	66100
7. CONNECTOR, 3 POSITION (QTY - 2)	66101
8. CONNECTOR, 5 POSITION (QTY - 1)	66102
9. GAUGE, HOUR METER	15085
10. RECEPTACLE, 240V/50A TWIST LOCK	18089
11. RECEPTACLE, 120V/20A GFI.....	14130
12. RECEPTACLE, 240V/30A TWIST L14-30R	65488
13. COIL CORD.....	1195418.
14. KIT, SENDER PLATE	A0001557886

RECOMMENDED SPARE PARTS - MISC



MISCELLANEOUS

- 1. JACK, TOP WIND, 2000 LB 13051
- 2. CAP, FUEL TANK WITH LANYARD 16326
- 3. KEY (SET OF TWO)..... 15309
- 4. CABLE, 69.25 IN 34128
- 5. CABLE, 69.75 IN 34129
- 6. CABLE, 67.875 IN 34130
- 7. CABLE, 116.00 IN..... 34132
- 8. JACK, SIDE WIND, 2000 LB 13050

Part No. A0001521579 Rev. C 08/26/2024

©2024 Generac Power Systems, Inc.
All rights reserved.
Specifications are subject to change without notice.
No reproduction allowed in any form without prior written consent
from Generac Power Systems, Inc.

GENERAC | **MOBILE**

Generac Power Systems, Inc.
S45 W29290 Hwy. 59, Waukesha WI 53189
[GeneracMobileProducts.com](https://www.GeneracMobileProducts.com) | 844-ASK-GNRC | 844-275-4672