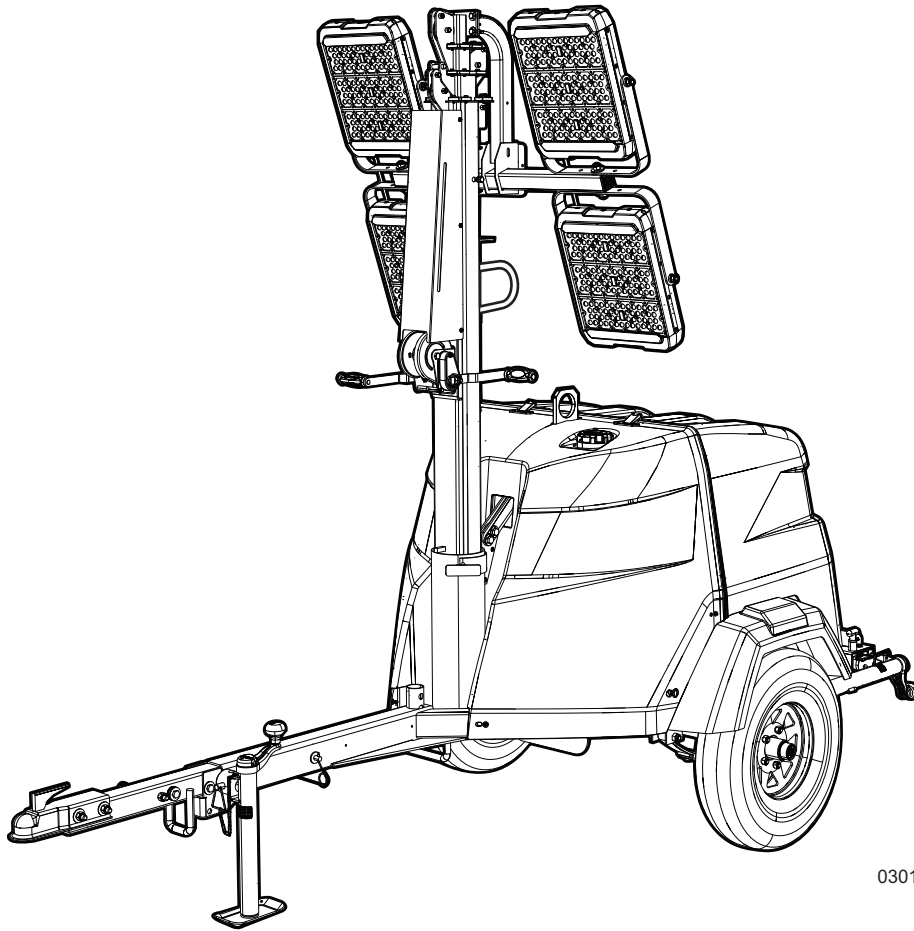


# ***MLT6SKDS***

## *Light Tower Parts Manual*



03019

MODEL NUMBER: \_\_\_\_\_

SERIAL NUMBER: \_\_\_\_\_

DATE PURCHASED: \_\_\_\_\_

***SAVE THIS MANUAL FOR FUTURE REFERENCE***

 **WARNING**

**CANCER AND REPRODUCTIVE HARM**

[www.P65Warnings.ca.gov](http://www.P65Warnings.ca.gov)

(000393a)

 **WARNING**

Breathing diesel engine exhaust exposes you to chemicals known to the State of California to cause cancer and birth defects or other reproductive harm.

- Always start and operate the engine in a well-ventilated area.
- If in an enclosed area, vent the exhaust to the outside.
- Do not modify or tamper with the exhaust system.
- Do not idle the engine except as necessary.

For more information go to

[www.P65Warnings.ca.gov/diesel](http://www.P65Warnings.ca.gov/diesel)

(000394)

# Introduction

This parts manual was prepared based on the information available at the time of publication and is subject to change without notice. Generac Mobile reserves the right to change parts at any time. To check whether a revised parts manual is available, contact Generac Mobile.

DO NOT MODIFY or use this equipment for any application other than which it was designed for. To keep your equipment fully operational, it is suggested you maintain a stock of commonly used maintenance or service parts. A recommended spare parts list can be found in the back of this manual. To order service parts, please go to [www.generacmobileproducts.com](http://www.generacmobileproducts.com) or call Generac Mobile.



## **WARNING**

Consult Manual. Read and understand manual completely before using product. Failure to completely understand manual and product could result in death or serious injury. (000100a)

---

## **WARNING**

Environmental Hazard. Always recycle batteries at an official recycling center in accordance with all local laws and regulations. Failure to do so could result in environmental damage, death, or serious injury. (000228)

---

## **GENERAC MOBILE PRODUCTS LLC**

**215 Power Drive • Berlin, WI 54923 U.S.A.**

**Phone: 920-361-4442**

**FAX: 920-361-4416**

**Toll Free: 1-800-926-9768**

**[www.generacmobileproducts.com](http://www.generacmobileproducts.com)**

**For technical or parts QUESTIONS, contact Generac Mobile Technical Service at 1-800-926-9768.**

Engine Make: \_\_\_\_\_

Engine Serial Number: \_\_\_\_\_

Engine Model Number: \_\_\_\_\_

This Page Intentionally Left Blank



# Table of Contents

Introduction .....	iii
Parts Manual Instructions.....	1
Unit Decals - Front, Rear and Top.....	2
Unit Decals - Left and Right Sides.....	4
Unit Decals - Inside Unit.....	6
Mast, Junction Box and Lights to Unit .....	8
Light Assembly .....	10
Mast Junction Box Assembly - Hard Wired Lights.....	12
Mast Assembly .....	14
Mast Assembly - Bottom Post - Manual Winch .....	16
Mast Assembly - Bottom Post - Electric Winch .....	18
Mast Assembly - Bottom Post - Manual Winch W/Brake (If Equipped).....	20
Enclosure Assembly (1 of 2).....	22
Enclosure Assembly (2 of 2).....	24
Control Box Assembly .....	26
Control Box Assembly - Power Zone Option (1 of 2).....	28
Control Box Assembly - Power Zone Option (2 of 2).....	30
Cooling System Assembly.....	32
Engine Assembly (1 of 2) .....	34
Engine Assembly (2 of 2) .....	36
Generator Assembly.....	38
Components to Trailer Assembly .....	40
Trailer Assembly.....	42
Recommended Spare Parts - Engine and Service Kits.....	44
Recommended Spare Parts - Electrical .....	46
Recommended Spare Parts - Misc.....	48
.....	49



# Parts Manual Instructions

Product illustrations are only representations. Products supplied may vary from the illustrations in this parts manual. Parts not shown in the illustration are indicated by a double dash (--) in the item column.

Please be prepared to provide the following information when ordering replacement parts: model number, serial number (on unit serial tag), part number, purchase order number (if applicable), shipping address, shipping method.

Refer to the illustration below to locate the unit ID tag and Vehicle Identification Number (VIN) tag on the unit. Important information, such as the unit serial number, model number, VIN and tire loading information are found on these tags. Record the information from these tags so it is available if the tags are lost or damaged. When ordering parts or requesting assistance, you may be asked to provide this information.

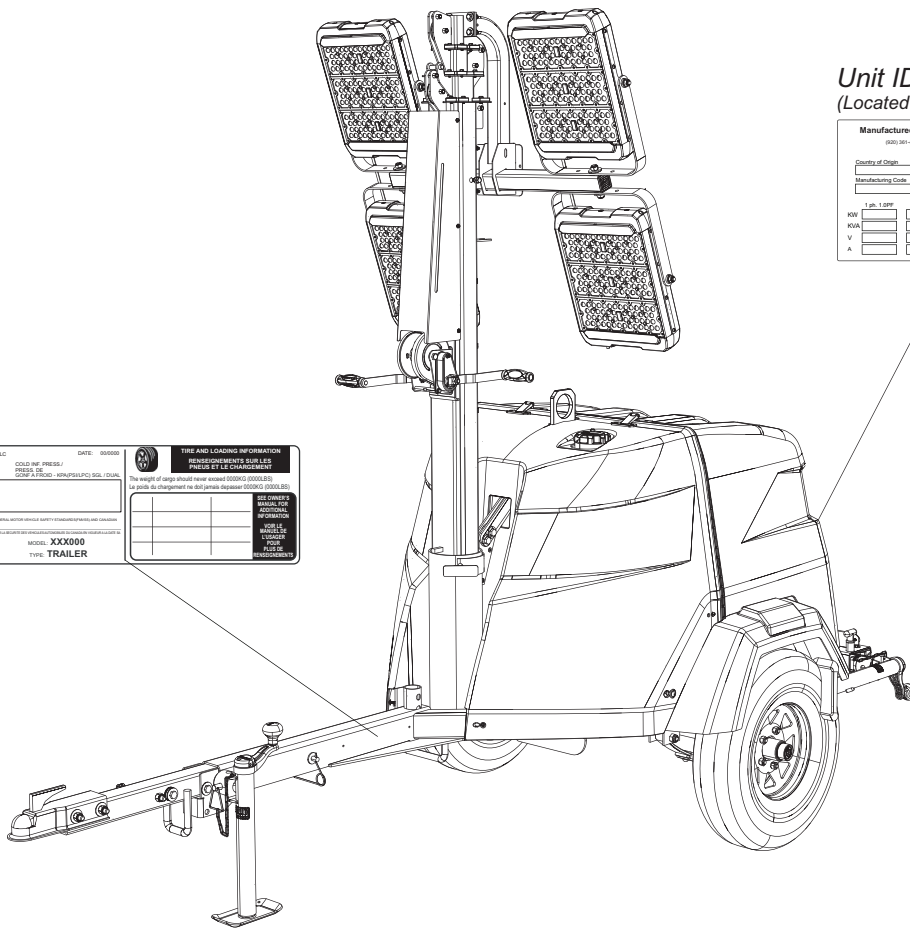
## VIN Tag

MANUFACTURED BY/FABRIQUE PAR: Generac Mobile Products LLC		DATE: 05/2000
OUVRIER/FABR: 00000 000000		COUL/NO: 000000
AXLE / AXES	TYPE / TYPE	MODEL / MODÈLE
MANUFACTURED BY/FABRIQUE PAR: Generac Mobile Products LLC OUVRIER/FABR: 00000 000000 COUL/NO: 000000 DATE: 05/2000 MODEL / MODÈLE: XX000 TYPE / TYPE: TRAILER VIN: 000000000000000000		

## Unit ID Tag (Located on top of control box)

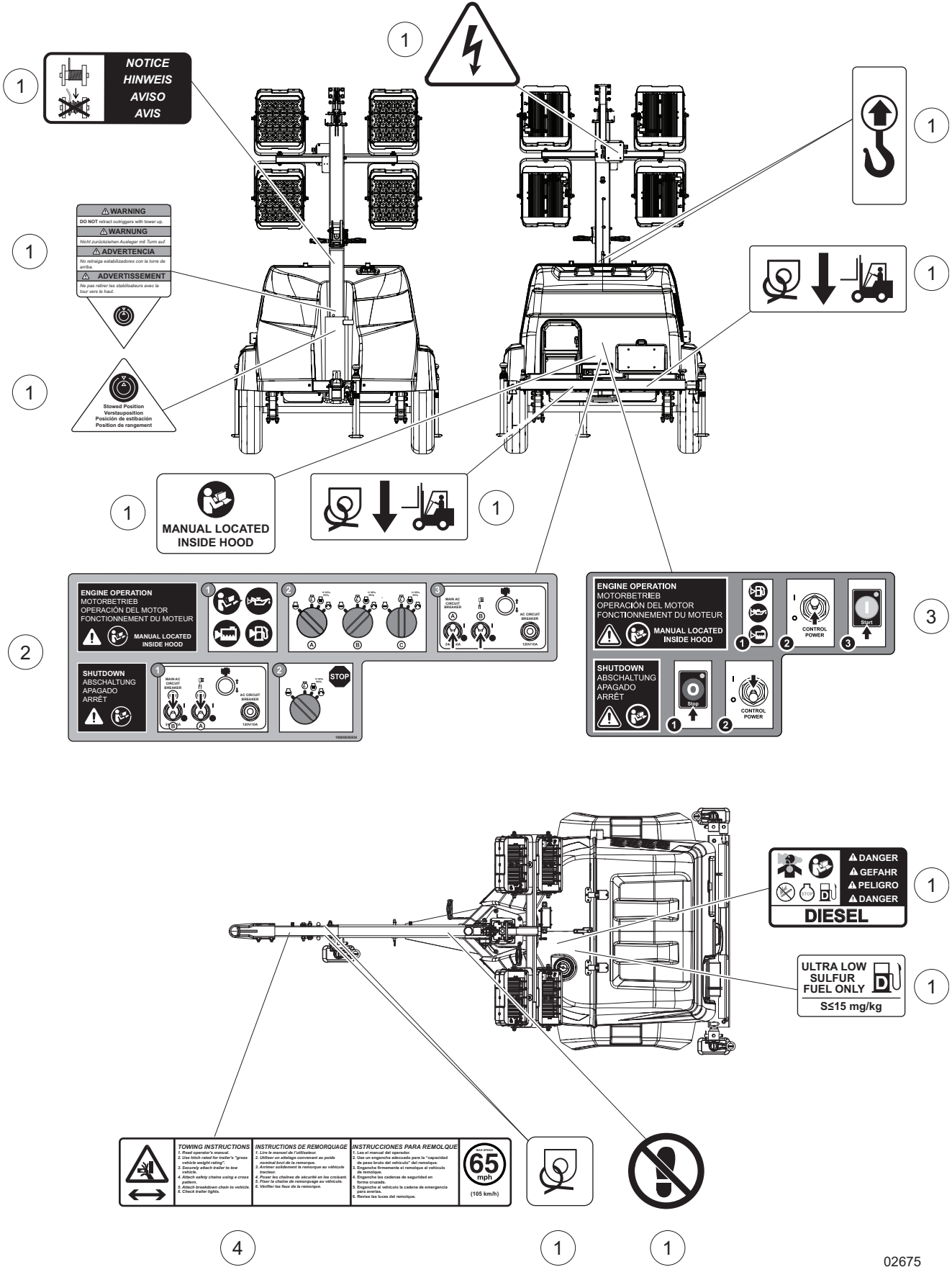
Manufactured by Generac Mobile Products LLC  
(0000) 00000000

Country of Origin	Model	Serial Number
Manufacturing Code	Weight (lbs/kg)	HP/M Frequency
1 pin, 1.0MP	2 pin, 20P	3 pin, 1.0P
Rating	Stk. Class	



03020

# UNIT DECALS - FRONT, REAR AND TOP

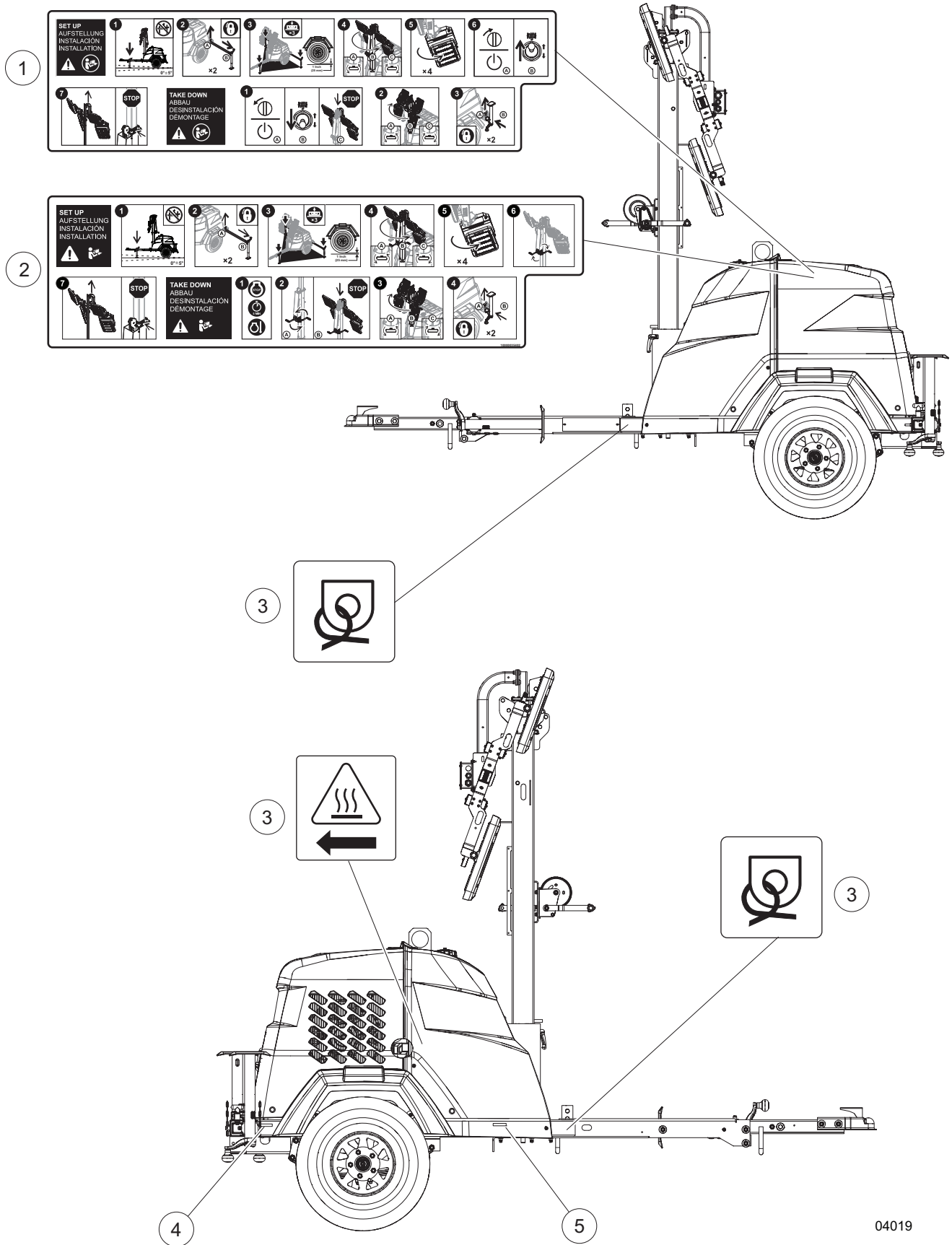


## UNIT DECALS - FRONT, REAR AND TOP

---

Item	Part No.	Qty	Description	Notes
1	55016	1	DECAL, SAFETY	
2	10000036934	1	DECAL ENGINE OPERATION	
3	10000039507	1	DECAL, OPERATION - PZ	
4	A0004245896	1	DECAL, TOWING INSTRUCTIONS	

# UNIT DECALS - LEFT AND RIGHT SIDES



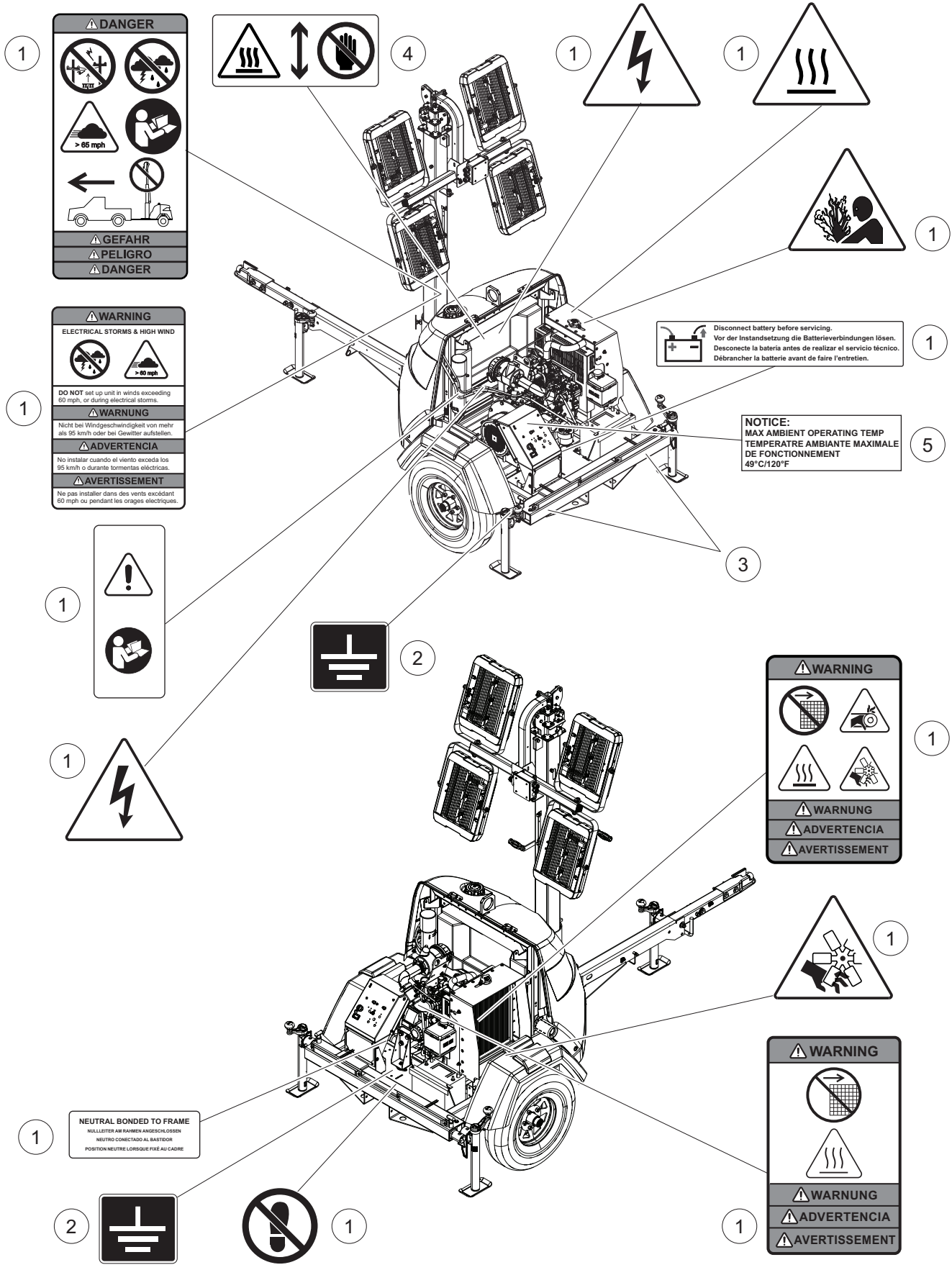
04019

## UNIT DECALS - LEFT AND RIGHT SIDES

---

Item	Part No.	Qty	Description	Notes
1	10000035325	1	DECAL, OPERATION MLT6SM - SKDS (ELECTRIC)	
2	10000035402	1	DECAL, OPERATION MLT6SM - SKDS (MANUAL)	shown
3	55016	1	DECAL, SAFETY MLT6SMD	
4	72149	1	REFLECTOR, RED (4.25 IN X .75 IN)	Set of two
5	72150	1	REFLECTOR, YELLOW (4.25 IN X .75 IN)	Set of two

# UNIT DECALS - INSIDE UNIT



03913

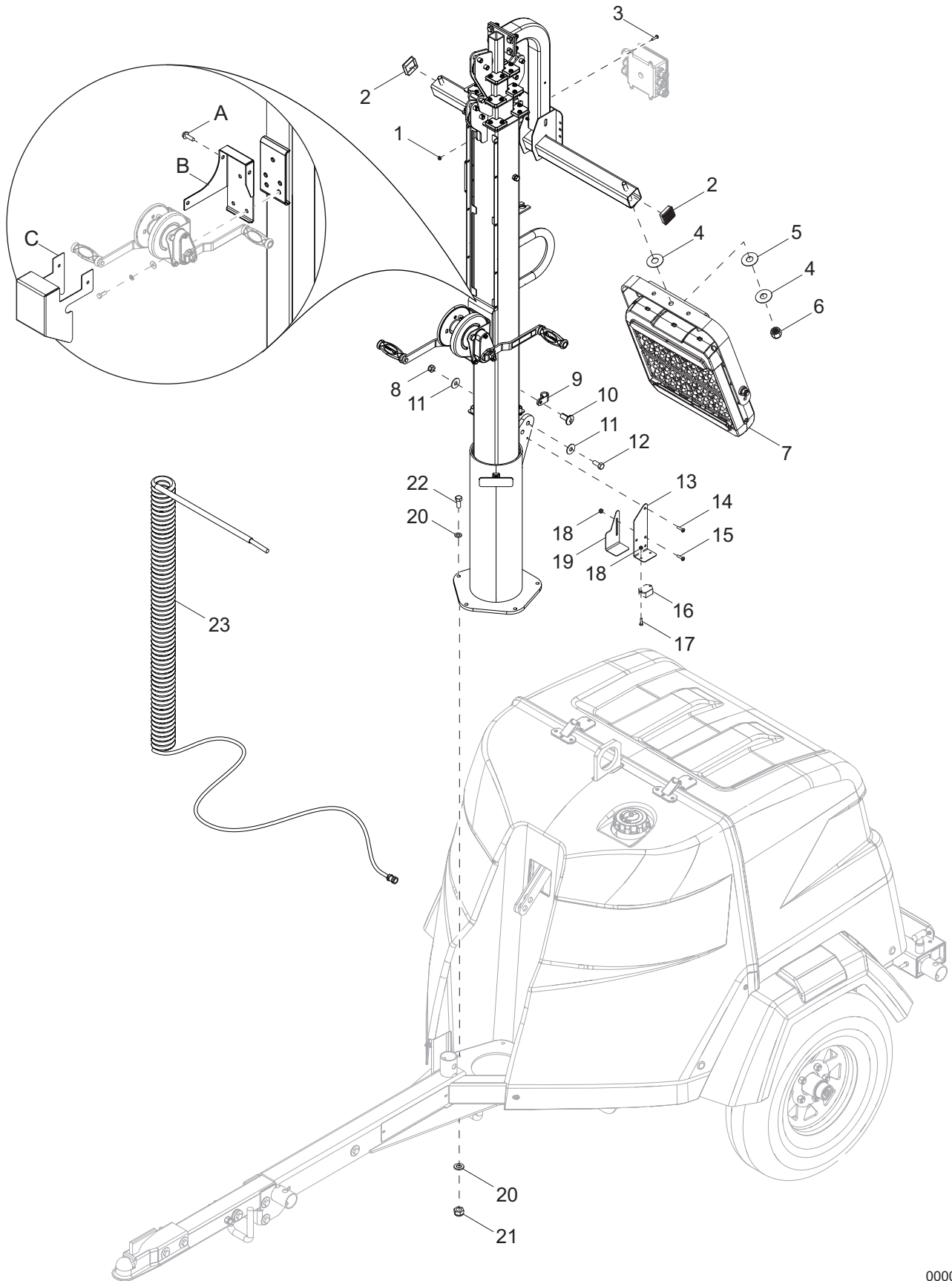


## UNIT DECALS - INSIDE UNIT

---

Item	Part No.	Qty	Description	Notes
1	55016	1	DECAL, SAFETY MLT6SMD	
2	12142	1	DECAL, GROUND	
3	A0000617187	2	REFLECTOR, RED (2 IN X.3.5 IN)	
4	A0000116250	1	DECAL, HOT EXHAUST ABOVE	
5	A0005111231	1	DECAL NOTICE - MAX AMBIENT 49C-120F	

# MAST, JUNCTION BOX AND LIGHTS TO UNIT



00000

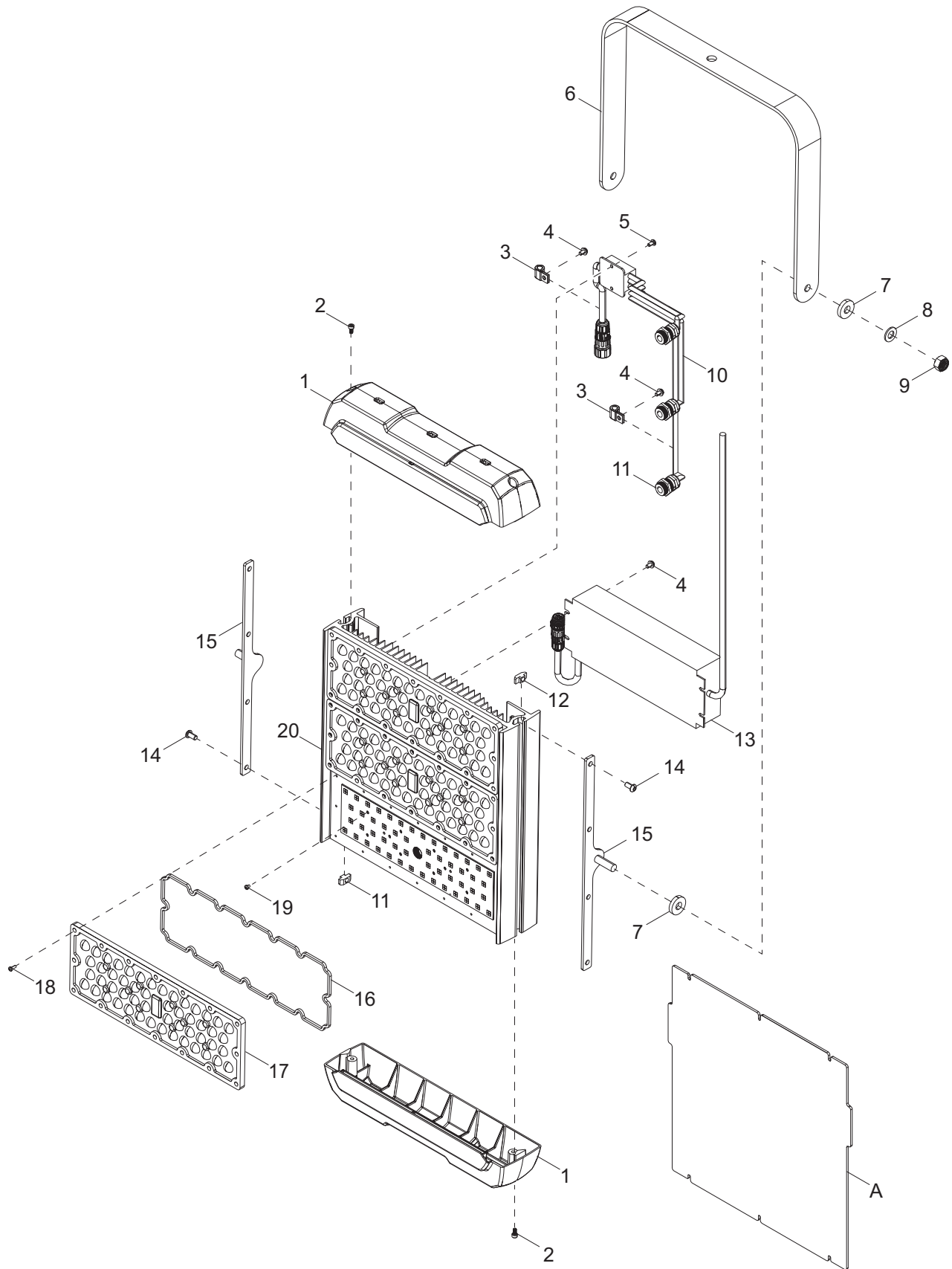
## MAST, JUNCTION BOX AND LIGHTS TO UNIT

Item	Part No.	Qty	Description	Notes
1	60061	4	NUT, 10-32 NYLOCK, ZC	
2	10000023259	2	PLUG, 2.0 SQUARE X .14 GA TUBE, PLASTIC	
3	60062	4	SCREW, 10-32 X .750 PAN PHILLIPS, G2	
4	A0000221212	8	WASHER FLAT M12 X 37OD X 1.5THK NYLON	
5	G052259	4	WASHER FLAT M12	
6	0D7119	4	NUT HEX LOCK M12-1.75 NY INS	
7	A0001904532	4	ASSY LED LIGHT HARD WIRE 320W	
8	62221	2	NUT, .500-13 NYLOCK, G5	
9	60375	3	CLAMP, TUBING - .312 LT DUTY	
10	60268	3	RIVET, .188 DIA X .126 TO .250 GRIP SSB6-4S	
11	G022304	4	WASHER FLAT 1/2 ZINC	
12	60484	2	SCREW, .500-13 X 2.0 STANDARD HEX, G5	
13	70208B	1	BRACKET, NIGHT WATCHMAN	
14	G036937	2	SCREW PPHM #10-32 X 1	
15	62054	2	SCREW, 8-32X.500 PAN PHIL 18-8 SS	
16	68763	1	ASSEMBLY, NIGHT WATCHMAN	
17	62054	2	SCREW, 8-32 X .500 PAN PHILLIPS 18-8, SS	
18	60270	8	NUT, 8-32 NYLOCK	
19	56610B	1	COVER, DUSK TO DAWN SENSOR	
20	60386	10	WASHER, .375 FLAT .993/.064	
21	60358	5	NUT, .375-16 NYLOCK, G5	
22	60139	5	SCREW, .375-16 X 1.50 HEX, G5	
23	A0000098118	1	ASSEMBLY, COIL CORD	

### MAST WINCH COVER OPTION (If equipped):

A	60528	4	SCREW, .250-20X.625 SFLG HEX G5 ZC
B	A0004064495	1	ASSY-PLATE-MANUAL WINCH
C	A0000527662	1	STB COVER, MANUAL WINCH - MLT6/8S

# LIGHT ASSEMBLY



03022

## LIGHT ASSEMBLY

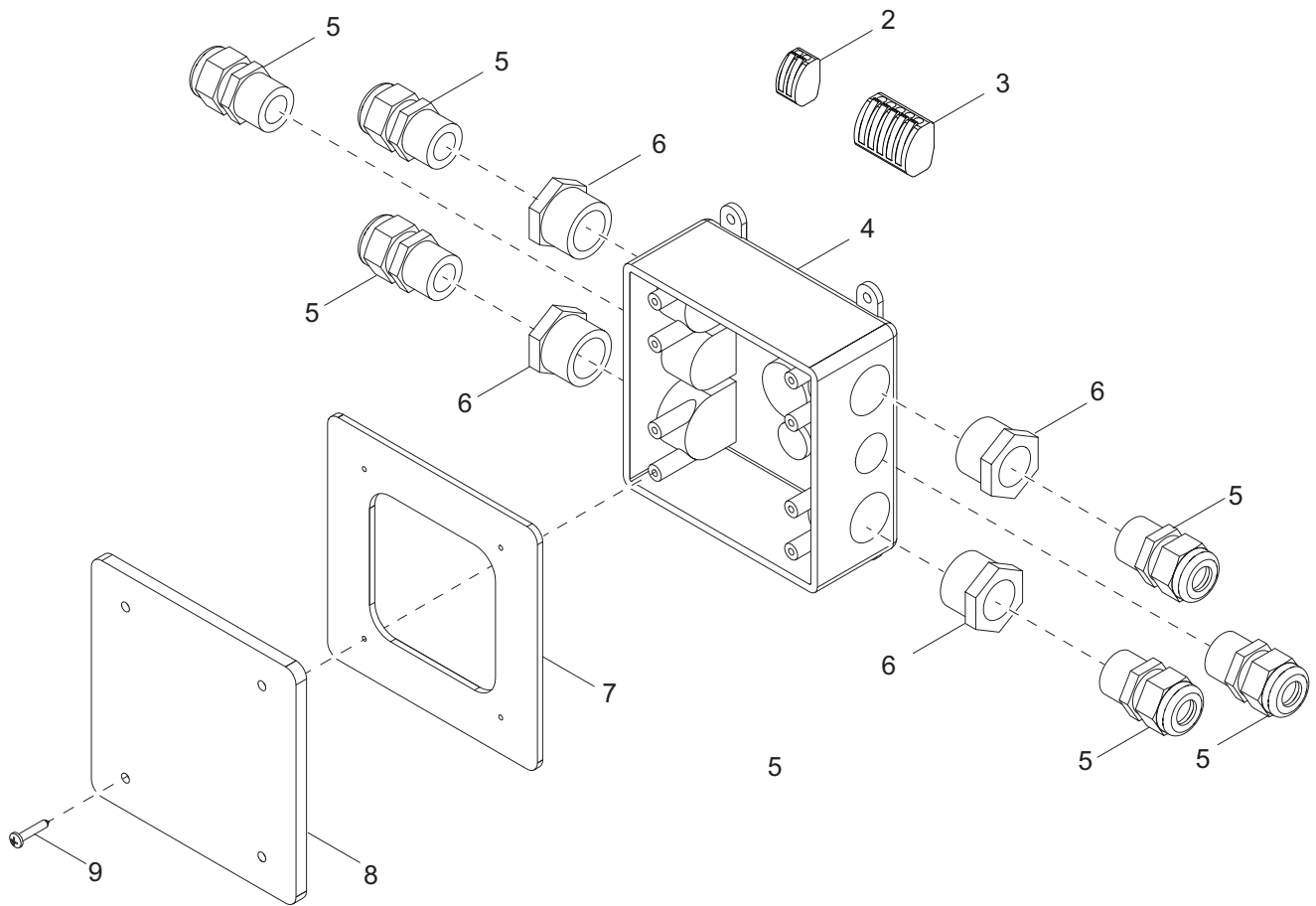
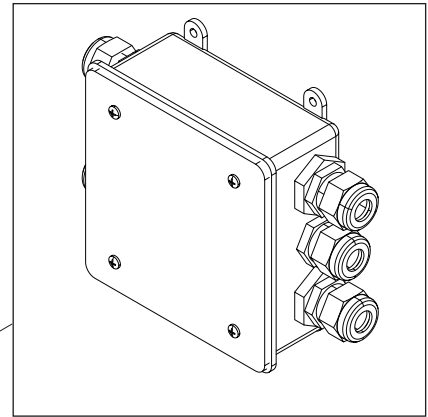
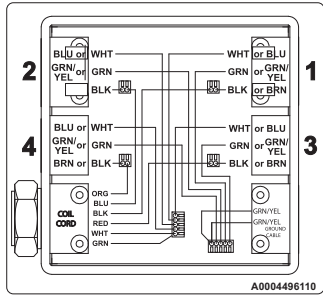
Item	Part No.	Qty	Description	Notes
1	A0000092362	2	END CAP, WITH DIFFUSER SLOT	
2	A0000188756	4	SCREW, M4-.7 X 12	
3	G020151	2	CLAMP, .312 X .302 - STEEL/VINYL	
4	0G7070	6	SCREW, M4-.7 X 14 PPHM	
5	G020745	2	SCREW, M4-.7 X 12 PPHM	
6	A0000188712	1	BRACKET, TRUNNION - 320W	
7	A0000188752	4	WASHER, M10 ID X 25MM OD X 5 MM T	
8	60027	2	WASHER, M10 FLAT	
9	A0000009451	2	NUT, M10-1.50 NYLOCK, G8.8	
10	A0000188731	1	CABLE, 2 POSITION, 3 WAY SPLITTER	
11	A0000092266	3	STRAIN RELIEF, 320W LED	
12	A0000188739	8	NUT, M6-1.00 X 12 HAMMER	
13	A0000188779	1	ASSEMBLY, DRIVER WITH CONNECTOR	
14	A0000214354	8	SCREW, M6-1.0 X 12 BHSC - BLACK	
15	A0000095202	2	BRACKET, TRUNNION TO FRAME	
16	A0000092361	3	GASKET, OPTICAL LENS SEAL	
17	A0000092360	3	LENS, OPTICAL 60°	
18	A0000192578	48	SCREW, MOUNTING - OPTICAL LENS	
19	A0000192575	30	SCREW, MOUNTING - PCB	
20	A0000092179	1	FRAME, HEAT SINK 320W - LED	

### *DIFFUSED LIGHTING (If equipped):*

A	A0000095669	1	KIT, DIFFUSER LENS 320W - LED
--	A0000277071	1	KIT, DIFFUSER LENS STORAGE 320W - LED

# MAST JUNCTION BOX ASSEMBLY - HARD WIRED LIGHTS

Inside cover

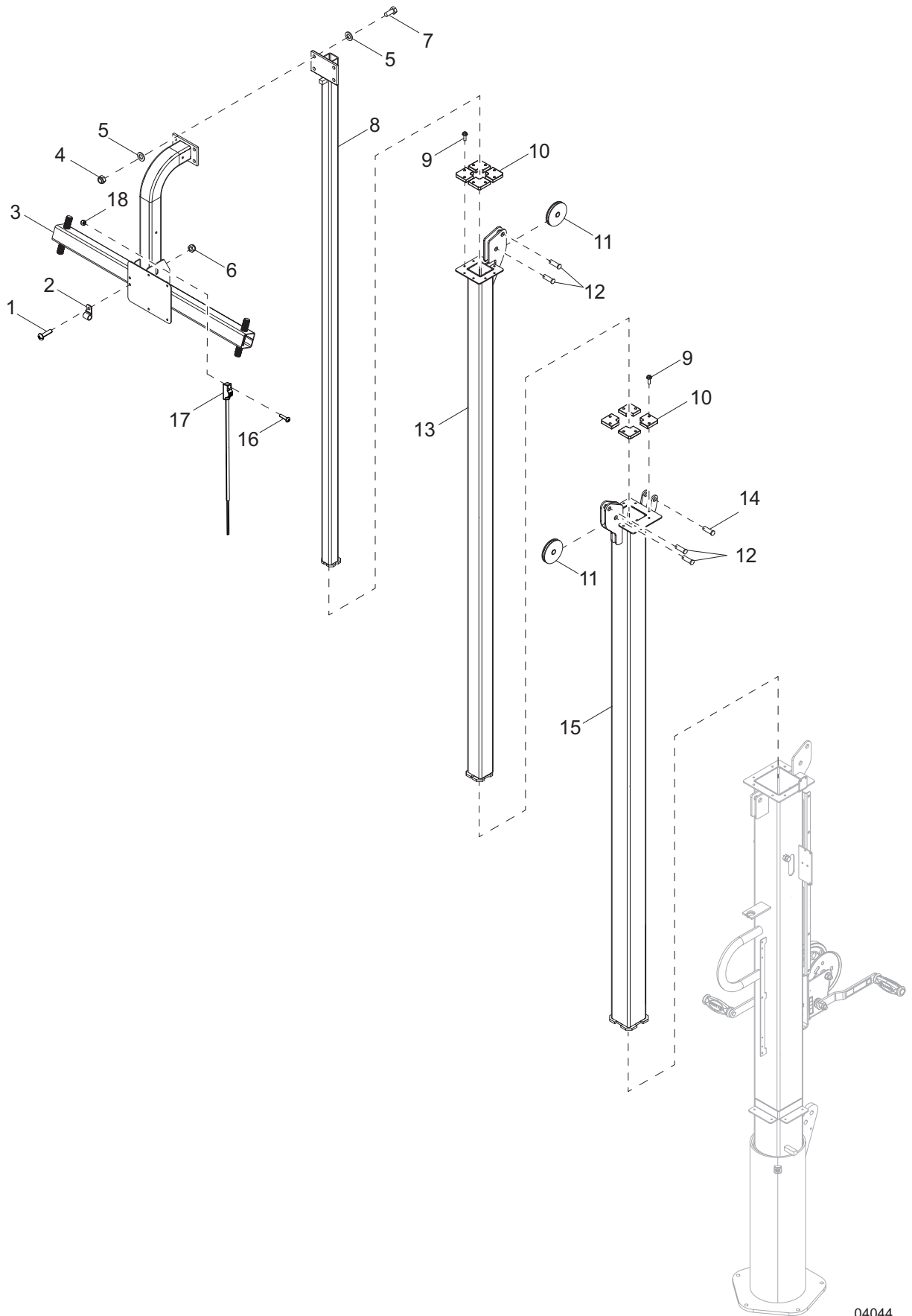


02607

## MAST JUNCTION BOX ASSEMBLY - HARD WIRED LIGHTS

Item	Part No.	Qty	Description	Notes
1	A0004496110	1	DECAL, MAST JUNCTION BOX	
2	66100	4	CONNECTOR, 2 POSITION	
3	66102	2	CONNECTOR, 5 POSITION	
4	12094	1	BOX, JUNCTION	
5	60755	4	FITTING, STRAIGHT .750MNPT X .500FNPT, NYL	
6	15864	6	STRAIN RELIEF, .500NPT WATER TIGHT	
7	13749SRV	1	GASKET, JUNCTION BOX - HFI 281000	
8	12109	1	COVER, BOX, 2-GANG PLASTIC	
9	60424	4	SCREW, 6-32 X .750 PAN PHILLIPS, G2	
10	A0004671291	1	ASSEMBLY, MAST JUNCTION BOX	

# MAST ASSEMBLY



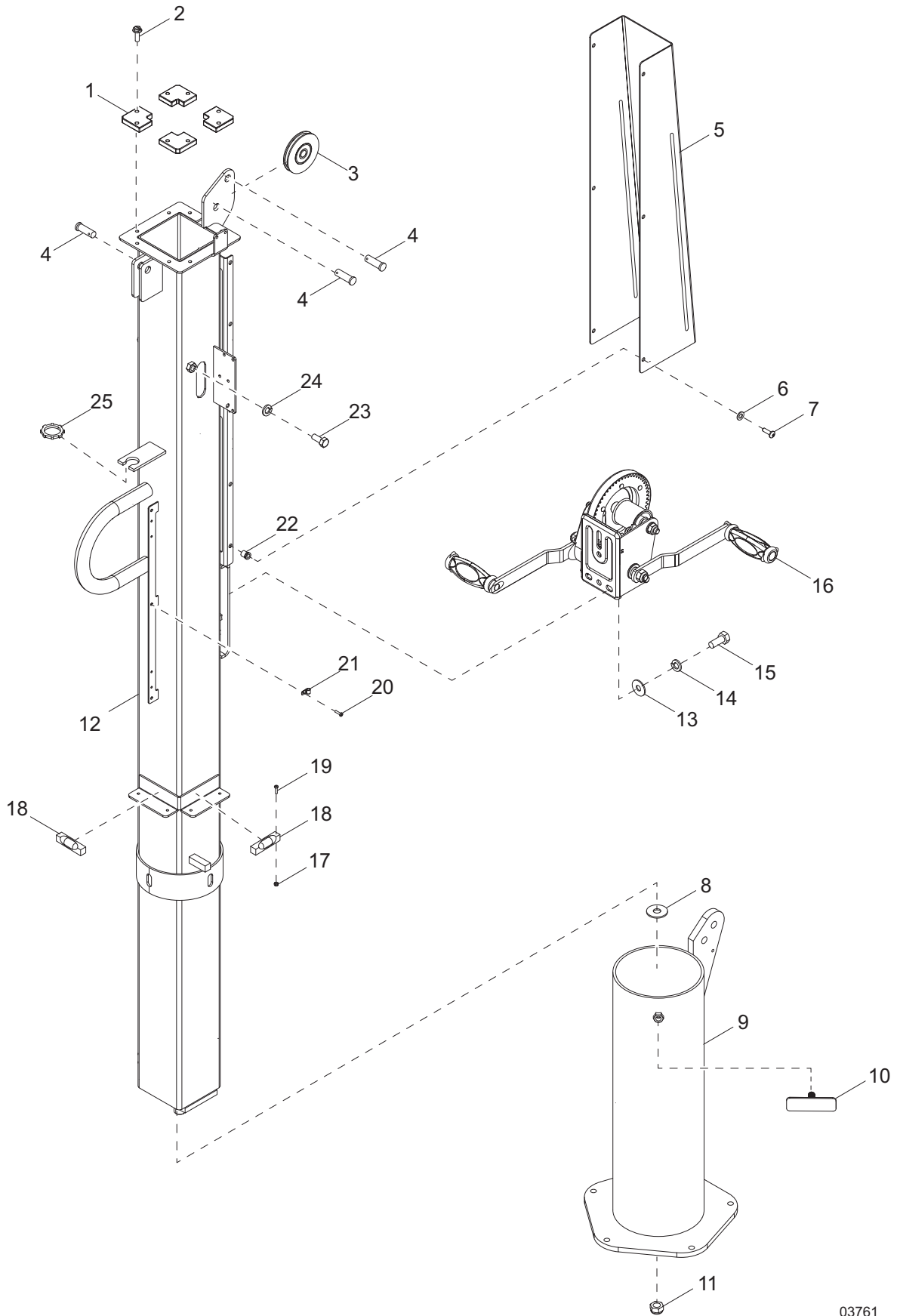
04044



## MAST ASSEMBLY

Item	Part No.	Qty	Description	Notes
1	60062	1	SCREW .250-20 X.750 SFLG HEX G5	W/A0001500722
2	16143	1	CLAMP, TUBING .312 - LT DUTY	W/A0001500722
3	A0000199129	1	STB WELDMENT MAST CROSSARM	
4	60358	4	NUT, .375-16 NYLOCK, G5	
5	60698	8	WASHER, .375 FLAT .993/.064	
6	60061	1	NUT, .250-20 NYLK 18-8 SS	W/A0001500722
7	60352	4	SCREW, .375-16 X 1.250 HEX, G5	
8	31264B	1	WELDMENT, MAST - 1.50	
9	63358	16	SCREW, .250-20 X .625 HEX WASH HD	
10	31225	8	GUIDE	
11	33736	2	ASSEMBLY, PULLEY - VERTICAL MAST	
12	63325	4	PIN, CLEVIS .500 DIAMETER X 1.063 UL	
13	31261B	1	WELDMENT, MAST - 2.25	
14	35655	1	PIN, CLEVIS .500 DIAMETER X 1.750 ZP	
15	A0002848667	1	STB WELDMENT, MAST 3.00	W/O MAST BRAKE
--	A0004064249	1	STB WELDMENT, MAST 3.00	W/ MAST BRAKE
16	G075476	1	SCREW PPHM M4-0.7 X 16	
17	A0002233216	1	ASM CABLE MOLDED GROUND TERMINAL	
18	0E6480	1	NUT HEX LOCK M4-0.7 NY INS	
--	31247	1	CABLE, .188 X 144 W/BALL SWEDGE	WINCH CABLE
--	31248	1	CABLE, .188 X 79.750 W/BALL SWEDGE	MIDDLE CABLE
--	31277	1	CABLE, .188 X 78.0 W/BALL SWEDGE	TOP CABLE

# MAST ASSEMBLY - BOTTOM POST - MANUAL WINCH

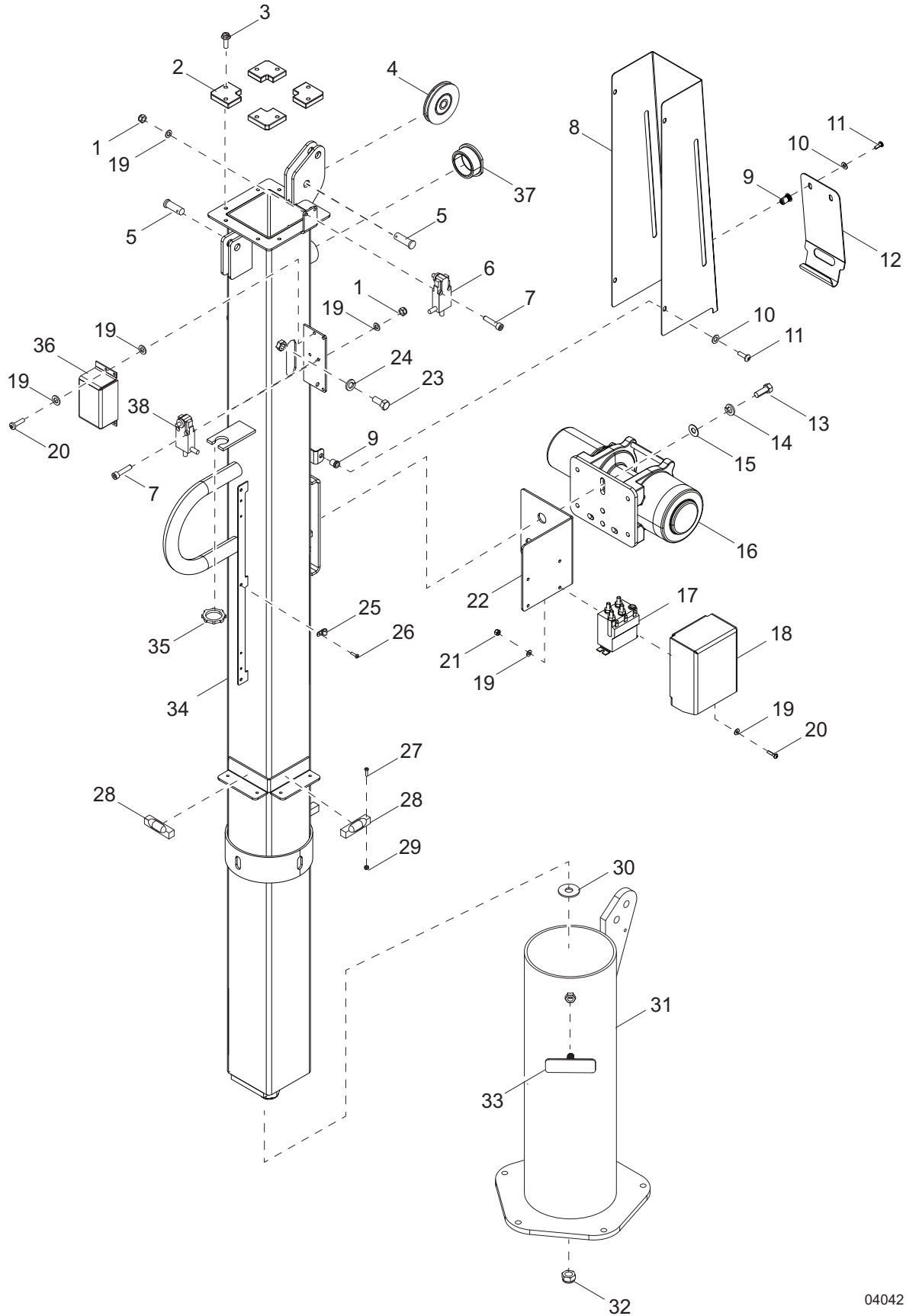


03761

## MAST ASSEMBLY - BOTTOM POST - MANUAL WINCH

Item	Part No.	Qty	Description	Notes
1	31225	4	GUIDE	
2	63358	8	SCREW, .250-20 X .625 HEX WASHER HEAD	
3	33736	1	ASSEMBLY, PULLEY VERTICAL MAST	
4	63325	3	PIN, CLEVIS .500 DIAMETER X 1.063 UL	
5	72116B	1	CABLE GUARD, MANUAL WINCH	
6	60067	6	WASHER, #10 FLAT .435/.060 18-8 SS	
7	60398	6	SCREW, 10-32X.500 PAN PHIL18-8 SS	
8	60247	1	WASHER, .750 FLAT 2.020/.130	
9	31218B	1	WELDMENT, MAST ROTATION TUBE	
10	10000018317	1	STZY WELDMENT T HANDLE	
11	60584	1	NUT, .750-10 NYLOCK, G5	
12	A0002749456	1	STB WELDMENT MAST 4.00	
13	60386	3	WASHER. .375 FLAT .993/.064	
14	60206	3	WASHER, .375 SPLIT LOCK - HARDENED	
15	60205	3	SCREW, .375-16 X 1.0 HEX, G5	
16	72127	1	WINCH, MANUAL - 1500 LB, DUAL HANDLE	
17	60051	4	NUT, M4-.70 NYLK G8.8 ZC	
18	A0000764090	2	LEVEL- SPIRIT	
19	A0000945464	4	SCREW PFHM M4-0.7 X 25 18-8 SS	
20	60268	3	RIVET, .188 DIA X .126 TO .250 GRIP SS	
21	60375	3	CLAMP, TUBING - .312 LT DUTY	
22	32922	6	INSERT, THD #10-32 SPLINED .020-.130 GR	
23	62269	2	SCREW, .375-16X.75 STD HEX 18-8 SS, RED	
24	60703	2	WASHER, .375 SPLIT LOCK 18-8 SS	
25	15861	1	NUT, SPECIAL .500 NPT LOCK	

# MAST ASSEMBLY - BOTTOM POST - ELECTRIC WINCH

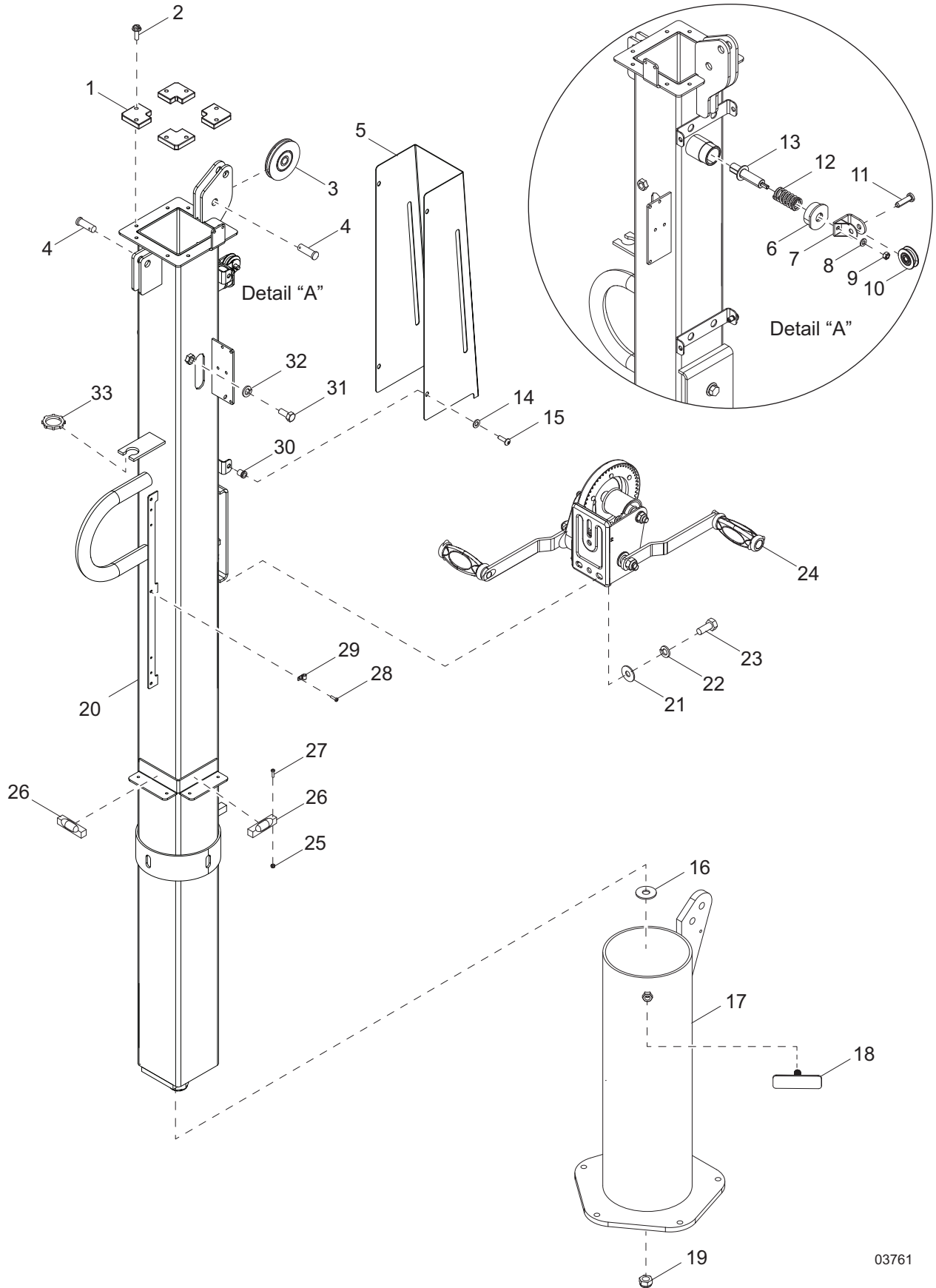


04042

## MAST ASSEMBLY - BOTTOM POST - ELECTRIC WINCH

Item	Part No.	Qty	Description	Notes
1	G063480	9	NUT HEX LOCK #8-32 NY INS ZNC	
2	31225	4	GUIDE	
3	63358	8	SCREW, .250-20 X .625 HEX WASHER HEAD	
4	33736	1	ASSEMBLY, PULLEY VERTICAL MAST	
5	63325	3	PIN, CLEVIS .500 DIAMETER X 1.063 UL	
6	31740	2	ASSEMBLY, DOWN STOP SWITCH	
7	67190	4	SCREW, 8-32 X 1.125 SOCKET HEAD, SS	
8	A0005124263	1	STB CABLE GUARD, WINCH	
9	32922	6	INSERT, THD #10-32 SPLINED .020-.130 GR	
10	G090427	6	WASHER FLAT #10 SS	
11	60398	6	SCREW, 10-32 X.500 PAN PHIL18-8 SS	
12	A0005128013	1	STB COVER, ELECTRIC WINCH	
13	60205	3	SCREW, .375-16 X 1.0 STANDARD HEX, G5	
14	G022237	3	WASHER LOCK SPRING 3/8 ZC	
15	60698	3	WASHER, .375 FLAT .875/.040 18-8 SS USS	
16	12874	1	WINCH, ELECTRIC - 770 LB HOIST	
17	11293	1	CONTACTOR	HARDWARE INCL
18	A0002848659	1	ALB COVER, CONDUCTOR	
19	60269	14	WASHER, #8 FLAT .433/.036	
20	60694	7	SCREW, 8-32 X.750 PAN PHIL 18-8 SS	
21	G063480	9	NUT HEX LOCK #8-32 NY INS ZN	
22	A0005124302	1	STB PLATE, CONTACT MTG	
23	62269	2	SCREW, .375-16 X .75 HEX, SS - RED	
24	G085917	2	WASHER LOCK SPRING 3/8 SS	
25	60375	3	CLAMP, TUBING - .312 LT DUTY	
26	G087233	3	RIVET POP .1875 X .450 SS	
27	A0000945464	4	SCREW PFHM M4-0.7 X 25 18-8 S	
28	A0000764090	2	LEVEL- SPIRIT	
29	0E6480	4	NUT HEX LOCK M4-0.7 NY INS	
30	60247	1	WASHER, .750 FLAT 2.020/.130	
31	31218B	1	WELDMENT, MAST ROTATION TUBE	
32	60584	1	NUT, .750-10 NYLK G5 YELLOW Z	
33	10000018317	1	STZY WELDMENT T HANDLE	
34	A0004064264	1	STB WELDMENT MAST - 4.00	
35	15861	1	NUT, SPECIAL .500 NPT LOCK	
36	37205B	1	COVER, UP LIMIT SWITCH	
37	A0005138666	1	STZ MAST BRAKE CAP NO HOLE	IF EQUIPPED
38	31739	1	ASSEMBLY, UP STOP SWITCH	

# MAST ASSEMBLY - BOTTOM POST - MANUAL WINCH W/BRAKE (IF EQUIPPED)

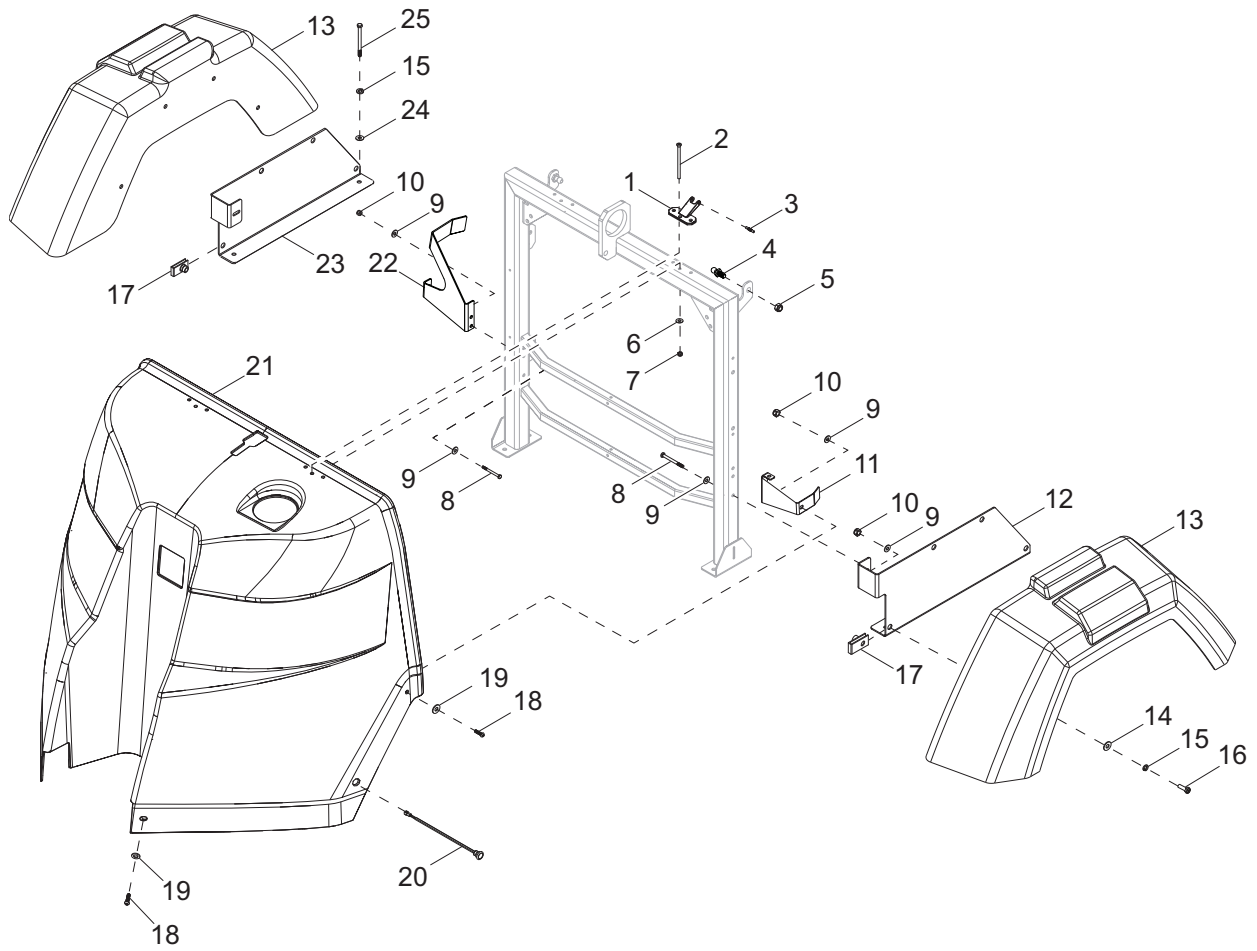


03761

## MAST ASSEMBLY - BOTTOM POST - MANUAL WINCH W/BRAKE (IF EQUIPPED)

Item	Part No.	Qty	Description	Notes
1	31225	4	GUIDE	
2	63358	8	SCREW, .250-20 X .625 HEX WASHER HEAD	
3	33736	1	ASSEMBLY, PULLEY VERTICAL MAST	
4	63325	3	PIN, CLEVIS .500 DIAMETER X 1.063 UL	
5	A0005124263	1	STB CABLE GUARD, WINCH	
6	A0004028606	1	STZ MAST BRAKE CAP	
7	A0004246782	1	STB WLDMNT MAST BRAKE PULLEY SUPPORT	
8	G049811	1	WASHER FLAT M6	
9	0B2236	1	NUT HEX LOCK M6-1 NY INS	
10	A0004062244	1	MAST BRAKE PULLEY ASSEMBLY	
11	A0004063852	1	MAST BRAKE PULLEY PIN	
12	A0004888972	1	MAST BRAKE SPRING 59 LBS/IN X 1.75 LG	
13	A0004029220	1	STZ MAST BRAKE PIN	
14	G090427	4	WASHER FLAT #10 SS	
15	60398	4	SCREW, 10-32X.500 PAN PHIL18-8 SS	
16	60247	1	WASHER, .750 FLAT 2.020/.130	
17	31218B	1	WELDMENT, MAST ROTATION TUBE	
18	10000018317	1	STZY WELDMENT T HANDLE	
19	60584	1	NUT, .750-10 NYLOCK, G5	
20	A0004064264	1	STB WELDMENT MAST - 4.00	
21	60698	3	WASHER, .375 FLAT .875/.040 18-8 SS USS	
22	G022237	3	WASHER LOCK SPRING 3/8 ZC	
23	60205	3	SCREW, .375-16 X 1.0 HEX, G5	
24	72127	1	WINCH, MANUAL - 1500 LB, DUAL HANDLE	
25	0E6480	4	NUT HEX LOCK M4-0.7 NY INS	
26	A0000764090	2	LEVEL- SPIRIT	
27	A0000945464	4	SCREW PFHM M4-0.7 X 25 18-8 SS	
28	G087233	3	RIVET POP .1875 X .450 SS	
29	60375	3	CLAMP, TUBING - .312 LT DUTY	
30	32922	4	INSERT, THD #10-32 SPLINED .020-.130 GR	
31	62269	2	SCREW, .375-16X.75 STD HEX 18-8 SS, RED	
32	G085917	2	WASHER LOCK SPRING 3/8 SS	
33	15861	1	NUT, SPECIAL .500 NPT LOCK	

# ENCLOSURE ASSEMBLY (1 OF 2)



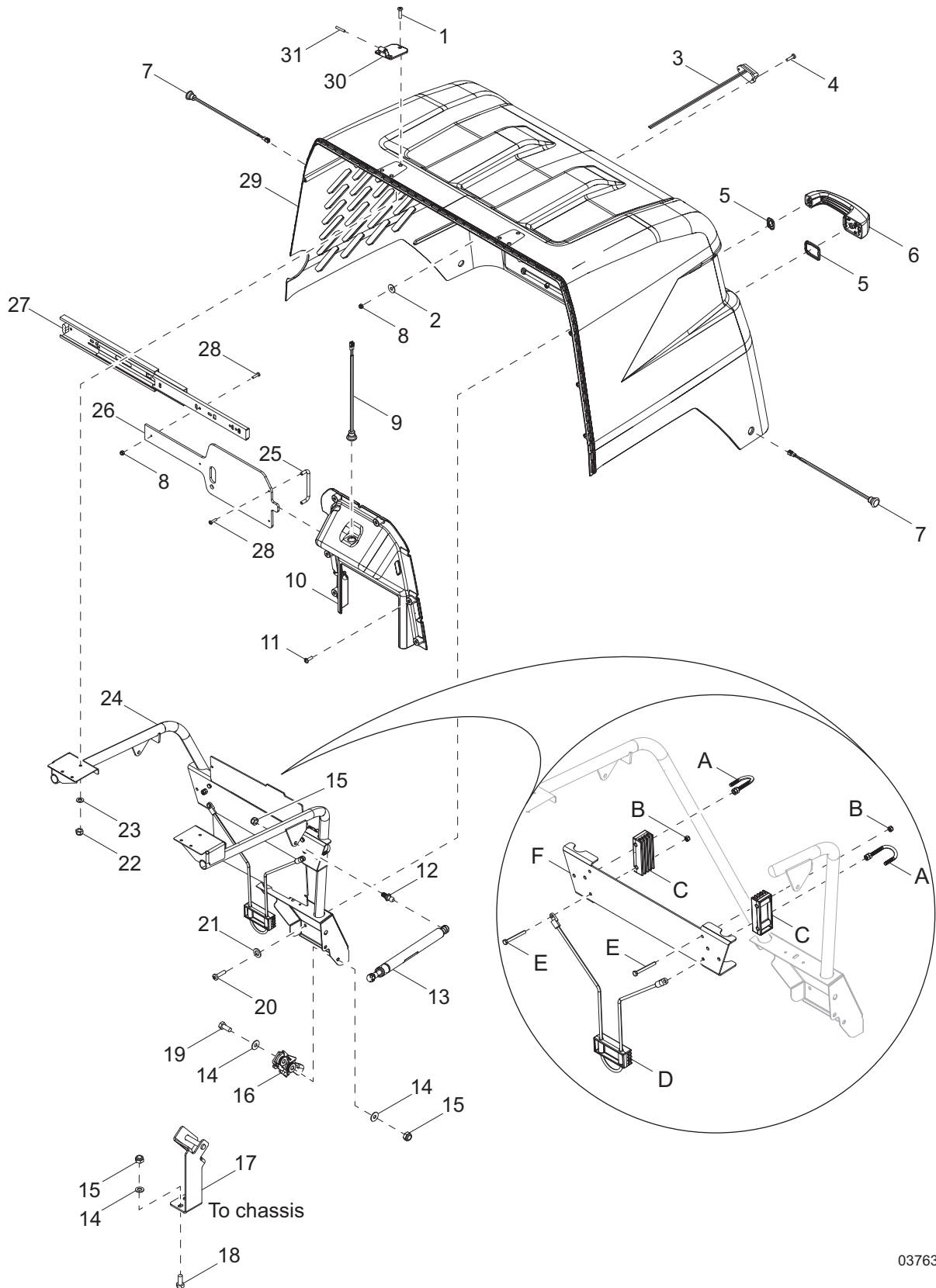
02435



**ENCLOSURE ASSEMBLY (1 OF 2)**

<b>Item</b>	<b>Part No.</b>	<b>Qty</b>	<b>Description</b>	<b>Notes</b>
1	10000022542	2	HINGE, OFFSET HOUSING LEAF - FRONT	
2	35282	6	SCREW, 10-24 X 3.0 FLAT HEAD PHILLIPS, SS	
3	10000022543	2	PIN, OFFSET HOUSING HINGE - KNURLED	
4	35293	2	BALL STUD, 10MM, .313-18	
5	60303	2	NUT, .312-18 NYLOCK, G2	
6	60237	12	WASHER, #10 FLAT .495/.036	
7	60457	12	NUT, 10-24 NYLOCK, G2	
8	61234	6	SCREW, .250-20 X 2.750 STANDARD HEX, G5	
9	60243	12	WASHER, .250 FLAT .735/.060	
10	60144	8	NUT, .250-20 NYLOCK, G5	
11	10000017357	1	GUIDE BRACKET, ENCLOSURE MEETING -LH	
12	35141B	1	BRACKET, MOUNTING FENDER - LEFT	
13	10000017287	2	FENDER, PLASTIC, 13 IN. WHEEL	
14	60386	8	WASHER, .375 FLAT .993/.064	
15	60271	8	WASHER, .312 SPLIT LOCK	
16	60028	8	SCREW, .312-18 X 1.0 STANDARD HEX, G5	
17	62086	8	NUT, .312-18 U-CLIP - SHORT TYPE	
18	68070	4	SCREW, .250-20 X 1.00 BUTTON HEX, SS	
19	60696	6	WASHER, .250 FLAT .625/.050, SS	
20	36961	2	ASSEMBLY, AMBER SIDE MARKER LIGHT	
21	10000012597	1	ENCLOSURE, FRONT COVER	
22	10000017378	1	GUIDE BRACKET, ENCLOSURE MEETING -RH	
23	35216B	2	BRACKET, MOUNTING FENDER - RIGHT	
24	60119	6	WASHER, .312 FLAT .875/.070	
25	60404	4	SCREW, .312-18 X 1.250 STANDARD HEX, G5	

# ENCLOSURE ASSEMBLY (2 OF 2)



03763

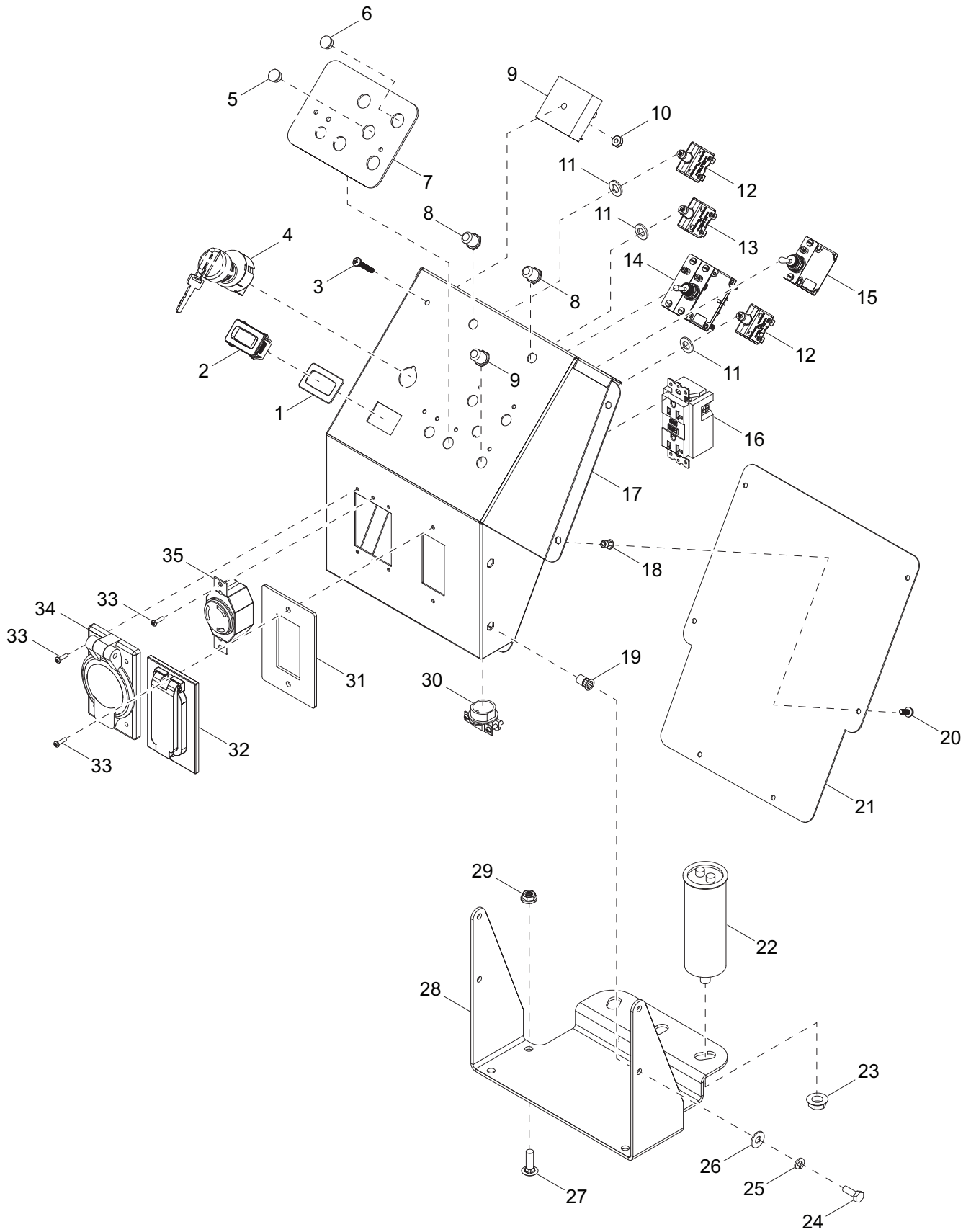
**ENCLOSURE ASSEMBLY (2 OF 2)**

<b>Item</b>	<b>Part No.</b>	<b>Qty</b>	<b>Description</b>	<b>Notes</b>
1	35290	6	SCREW, 10-24 X 1.00 FLAT PHILLIPS, SS	
2	60269	2	WASHER, #8 FLAT .433/.036 ZC	
3	A0001653096	1	LIGHT LICENSE PLATE W/ CONNECTORS	
4	60694	2	SCREW, 8-32 X .750 PAN PHILLIPS, SS	
5	70216	1	GASKET, KIT HANDLE, PUSH BUTTON	
6	35138	1	HANDLE, PUSH-BUTTON PADLOCK	
7	36962	2	ASSEMBLY, RED SIDE MARKER	
8	60270	4	NUT, 8-32 NYLOCK, CLASS 6	
9	36964	1	ASSEMBLY, CONTROLS LIGHT	
10	10000012596	1	BEZEL, CONTROL PANEL TEXTURED - BLACK	
11	10000017348	6	SCREW, D60-2.14 X 20TRWH	
12	35293	2	BALL STUD, 10MM, .313-18	
13	35137	2	GAS SHOCK, 120 LB	
14	60119	6	WASHER, .312 FLAT .875/.070	
15	60303	6	NUT, .312-18 NYLOCK, G2	
16	35139	1	LATCH, ROTARY	
17	37178B	1	MOUNT, DOOR LATCH STRIKER	
18	61066	2	SCREW, .312-18 X 1.00 CARRIAGE SQUARE - SS	
19	62001	2	SCREW, .312-18 X 1.250 STANDARD HEX, G5	
20	60146	3	SCREW, M6-1.00X20 PAN PHIL G4.8 ZC	
21	60243	3	WASHER, .250 FLAT .735/.060	
22	60457	6	NUT, 10-24 NYLOCK, G2 ZC	
23	60237	6	WASHER, #10 FLAT .495/.036 ZC	
24	37012B	1	WELDMENT, ENCLOSURE STRUCTURE	
25	37123	1	HANDLE, CONTROL BOX COVER	
26	10000017623	1	COVER, SLIDING CONTROL PANEL	
27	36914	1	SLIDE, CONTROL BOX COVER	
28	62054	4	SCREW, 8-32 X .500 PAN PHILLIPS - SS	
29	10000017682	1	HOUSING REAR TEXTRD WHT	
30	10000022523	2	HINGE, LEAF OFFSET HOUSING - REAR	
31	10000022543	2	HINGE OFFSET HOUSING KNURLED PIN	

**LED LENS DIFFUSER STORAGE (If equipped):**

A	A0000277098	2	U-BOLT M6X1 SS
B	60047	4	NUT, M6-1.00 HEX NYLK CL8.8 ZC
C	A0000277095	2	SPACER PLASTIC
D	A0000277097	1	ASSY CORD ELASTIC MOUNTS AND KEEPER
E	G057058	4	SCREW HHC M6-1.0 X 55 C8.8
F	A0000277086	1	STB BRACKET STORAGE DIFFUSED LENS

# CONTROL BOX ASSEMBLY

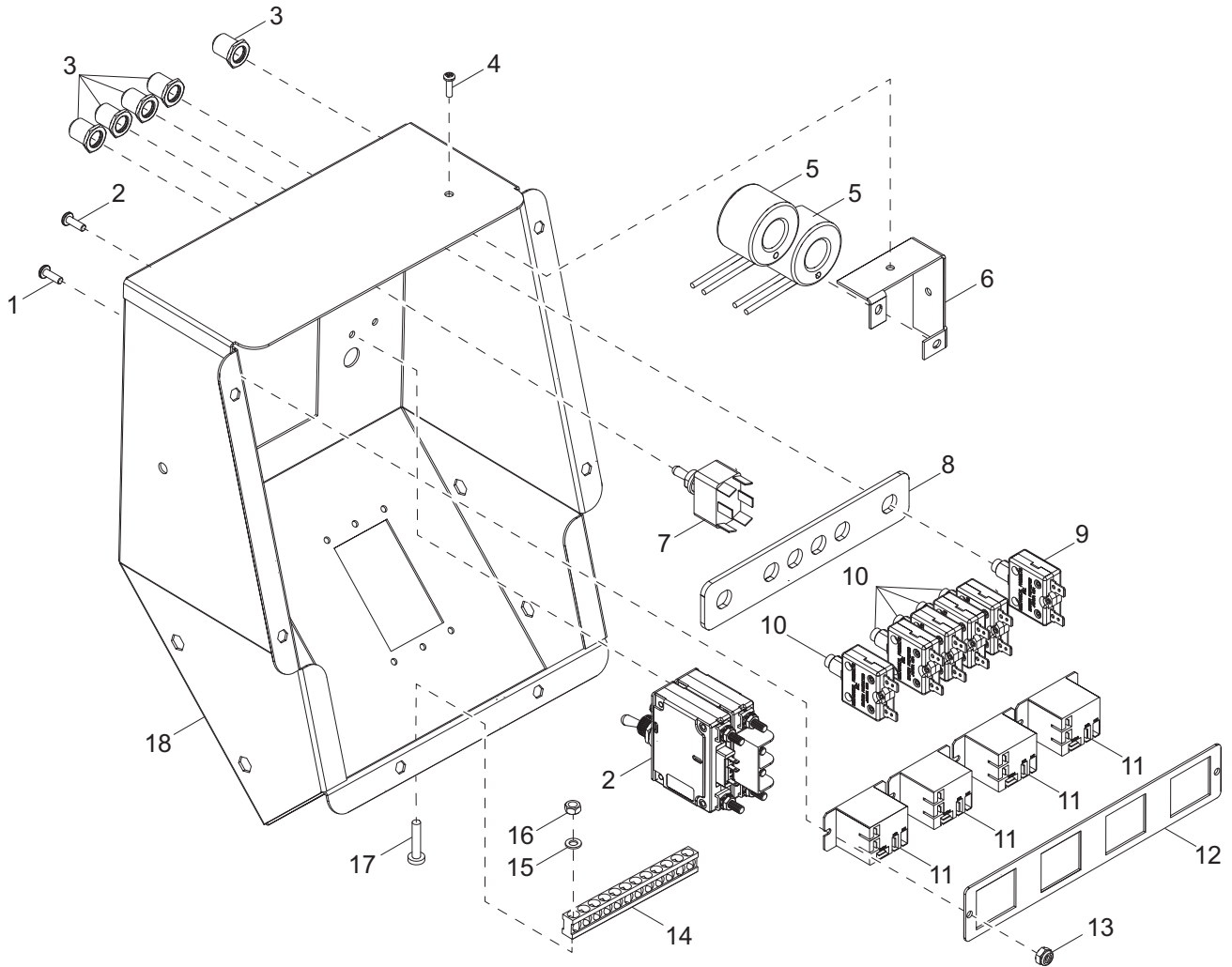


02680

## CONTROL BOX ASSEMBLY

Item	Part No.	Qty	Description	Notes
1	36944	1	GASKET, HOUR METER	
2	36886	1	METER, HOUR	
3	63308	1	SCREW, 10-32 X 1.250 PAN PHILLIPS, SS	
4	36882	1	SWITCH, SEALED KEY, 4-POSITION	
5	65798	1	PLUG, HOLE .468 X .06	MANUAL MAST
6	65479	2	PLUG, HOLE .500 X .125 - PLASTIC	
7	10000034973	1	DECAL, CONTROL PANEL	
8	36938	3	BOOT, PUSH BUTTON BREAKER	
9	14201	1	RELAY, 10A SPDT, TIME DELAY - 15 SEC FIXED	
10	60061	1	NUT, 10-32 NYLOCK	
11	60386	3	WASHER, .375 FLAT .993/.064	
12	36937	2	BREAKER, 10A DC	
13	36935	1	BREAKER, 15A, 1 POLE, 250V	
14	36975	1	BREAKER, 30A MAIN	
15	10000035999	1	SWITCH, 10 AMP	
16	14130	1	RECEPTACLE, 120V/20A GFI	
17	36884B	1	CONTROL BOX	
18	62234	6	INSERT, THREADED #10-32 HEX .020-.130 GRIP	
19	63231	4	INSERT, THREADED .250-20 HEX .027-.165 GRIP	
20	62254	6	SCREW, 10-32 X .500 SERRATED FLANGE, SS	
21	36885B	1	COVER, CONTROL PANEL BOX	
22	36980	1	CAPACITOR, 25MF, 5% 440VAC, SEALED STUD MOUNT	
23	60148	1	NUT, M12-1.75 SERRATED FLANGE, G8.8	
24	60281	4	SCREW, .250-20 X .750 STANDARD HEX, G5	
25	60286	4	WASHER, .250 SPLIT LOCK	
26	60243	4	WASHER, .250 FLAT .735/.060	
27	61066	4	SCREW, .312-18 X 1.0 CARRIAGE, SS	
28	38409B	1	BRACKET, CONTROL BOX MOUNTING	
29	60095	4	NUT, .312-18 SERRATED FLANGE	
30	14219	1	STRAIN RELIEF - .75 ROMEX W/NUT	
31	A0001500724	1	GASKET, RECEPTACLE COVER	
32	36939	1	COVER, RECEPTACLE - WEATHER PROOF 20/30A TWIST-LOCK	
33	62210	6	SCREW, 6-32 X .50 PAN PHILLIPS, SS	
34	37017	1	COVER RECEPTACLE - WEATHER PROOF, 20A GFCI SINGLE	
35	14137	1	RECEPTACLE, 240V/30A TWIST	
--	60728	6	NUT, 6-32 NYLOCK, G5	USE WITH 62210
--	65707	1	SWITCH, TOGGLE - SPDT SPRING	ELECTRIC MAST
--	68282	1	WIRE GROUP, CONTROL BOX - ELECTRIC MAST	
--	68283	1	HARNESS, GENERATOR TO CONTROL BOX	
--	68284	1	HARNESS, CONTROL BOX TO ELECTRIC MAST	

# CONTROL BOX ASSEMBLY - POWER ZONE OPTION (1 OF 2)

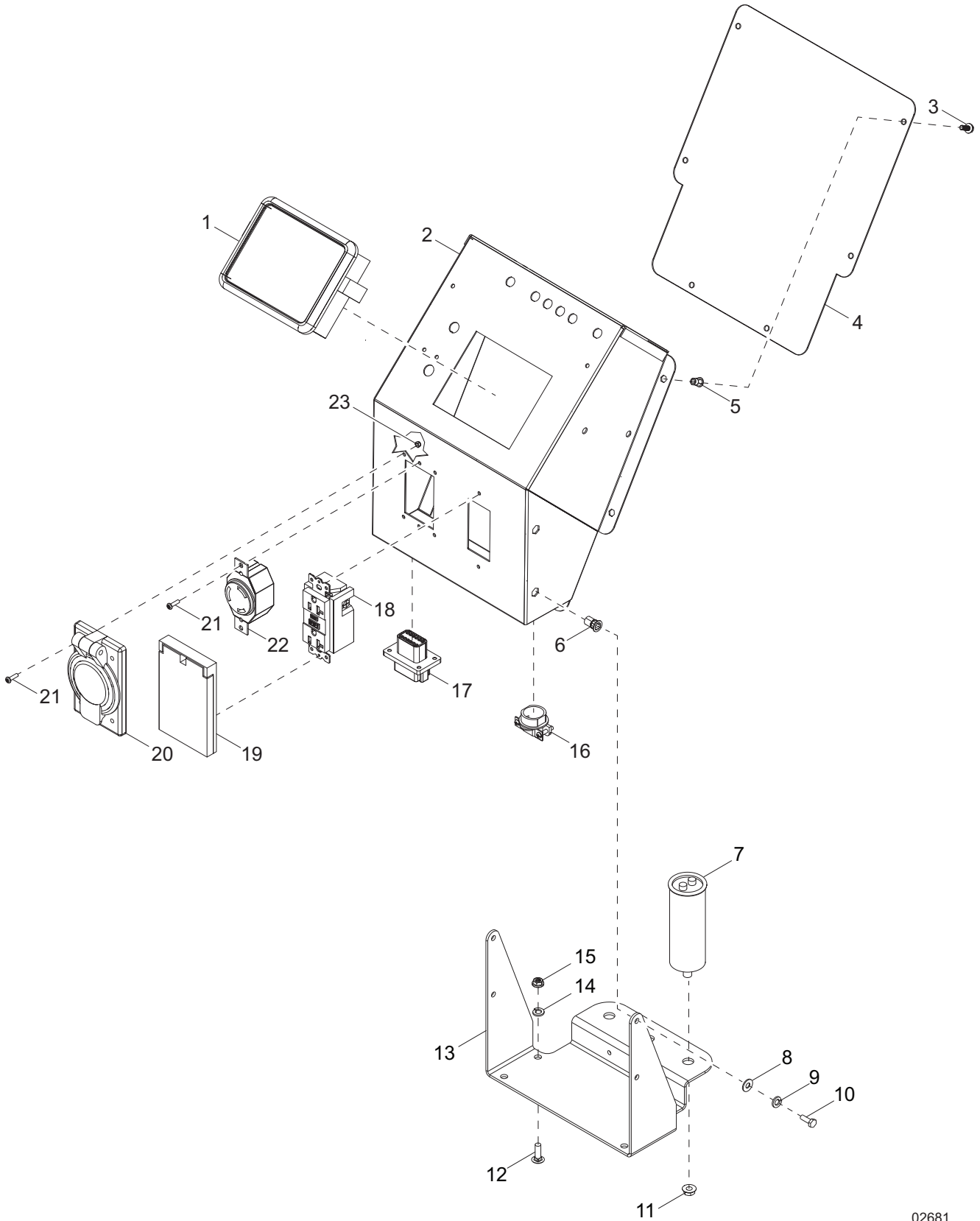


02345

## CONTROL BOX ASSEMBLY - POWER ZONE OPTION (1 OF 2)

Item	Part No.	Qty	Description	Notes
1	62054	3	SCREW, 8-32 X .500 PAN PHILLIPS,- SS	
2	36975	2	BREAKER, 30A MAIN	WITH HARDWARE
3	36938	6	BOOT, PUSH BUTTON BREAKER	
4	62210	6	SCREW, 6-32 X .50 PAN PHILLIPS - SS	
5	66255	2	TRANSFORMER, CURRENT	
6	38449B	1	BRACKET, CT MOUNT	
7	10000031493	1	SWITCH, TOGGLE - SPST 20A SEALED	
8	38448B	1	SPACER, BREAKER CONTROL BOX	
9	36937	1	BREAKER, 10A DC	
10	36935	5	BREAKER, 15A, 250V, 1 POLE	
11	29759	4	RELAY, 12V COIL 120-240 VAC RATED	
12	38447B	1	BRACKET, RELAY	
13	60270	3	NUT, 8-32 NYLOCK, G6	
14	14204	1	KIT, GROUND BAR	
15	60252	6	WASHER, #10 SPLIT LOCK	
16	60318	2	NUT, 8-32 HEX, G5	
17	60406	2	SCREW, 8-32 X 1.00 PAN PHILLIPS, G2	
18	37823B	1	BOX, CONTROL - PZ	

# CONTROL BOX ASSEMBLY - POWER ZONE OPTION (2 OF 2)



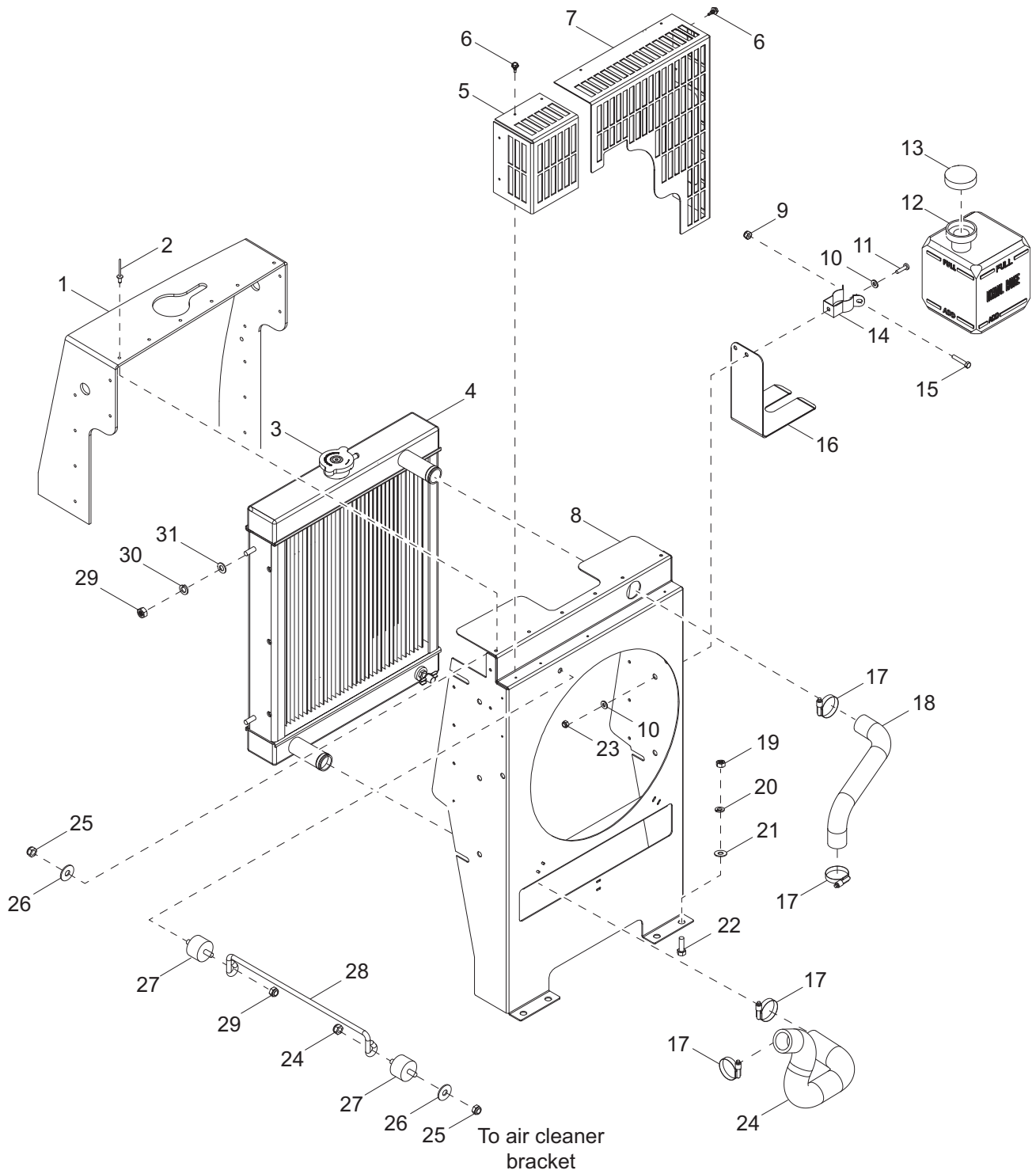
02681



## CONTROL BOX ASSEMBLY - POWER ZONE OPTION (2 OF 2)

Item	Part No.	Qty	Description	Notes
1	CALL	1	CONTROLLER, DEEP SEA - PROGRAMMED	
2	37823B	1	BOX, PZ CONTROL PANEL	
3	60277	6	SCREW, 10-32 X .500 PAN PHILLIPS, G2	
4	38413B	1	COVER, CONTROL PANEL BOX	
5	62234	6	INSERT, 10-32 HEX, .020-.130 GRIP, THREADED	
6	63231	4	INSERT, .250-20 HEX, .027-.165 GRIP, THREADED	
7	36980	1	CAPACITOR, 25MF 5% 440VAC, SEALED	
8	60243	4	WASHER, .250 FLAT .735/.060	
9	60286	4	WASHER, .250 SPLIT LOCK	
10	60647	4	SCREW, .250-20 X .500 HEX, G5	
11	60148	3	NUT, M12-1.75 SERRATED FLANGE, G8.8	
12	61066	4	SCREW, .312-18 X 1.0 CARRIAGE - SS	
13	38409B	1	BRACKET, CONTROL BOX MOUNTING	
14	60119	4	WASHER, .312 FLAT .875/.070	
15	60095	4	NUT, .312-18 SERRATED FLANGE	
16	14219	2	STRAIN RELIEF, .75 ROMEX W/NUT	
17	66695	1	CONNECTOR, DUETSCH 12 POSITION - FLANGE	
18	14130	1	RECEPTACLE, 120V/20A GFI	
19	37017	1	COVER, RECEPTACLE 20A GFCI SINGLE - WEATHERPROOF	
20	36939	1	COVER, RECEPTACLE 20/30A - WEATHERPROOF	
21	62210	6	SCREW, 8-32 X .500 PAN PHILLIPS - SS	
22	14137	1	RECEPTACLE, 250V/ 30A TWIST	
23	60728	6	NUT, 6-32 NYLOCK, G5	
--	68534	1	HARNESS, CONTROL BOX PZ	REPLACES 68284
--	68535	1	HARNESS, GEN TO CONTROL BOX PZ	REPLACES 68283
--	36928	1	HARNESS, ENGINE PZ	

# COOLING SYSTEM ASSEMBLY

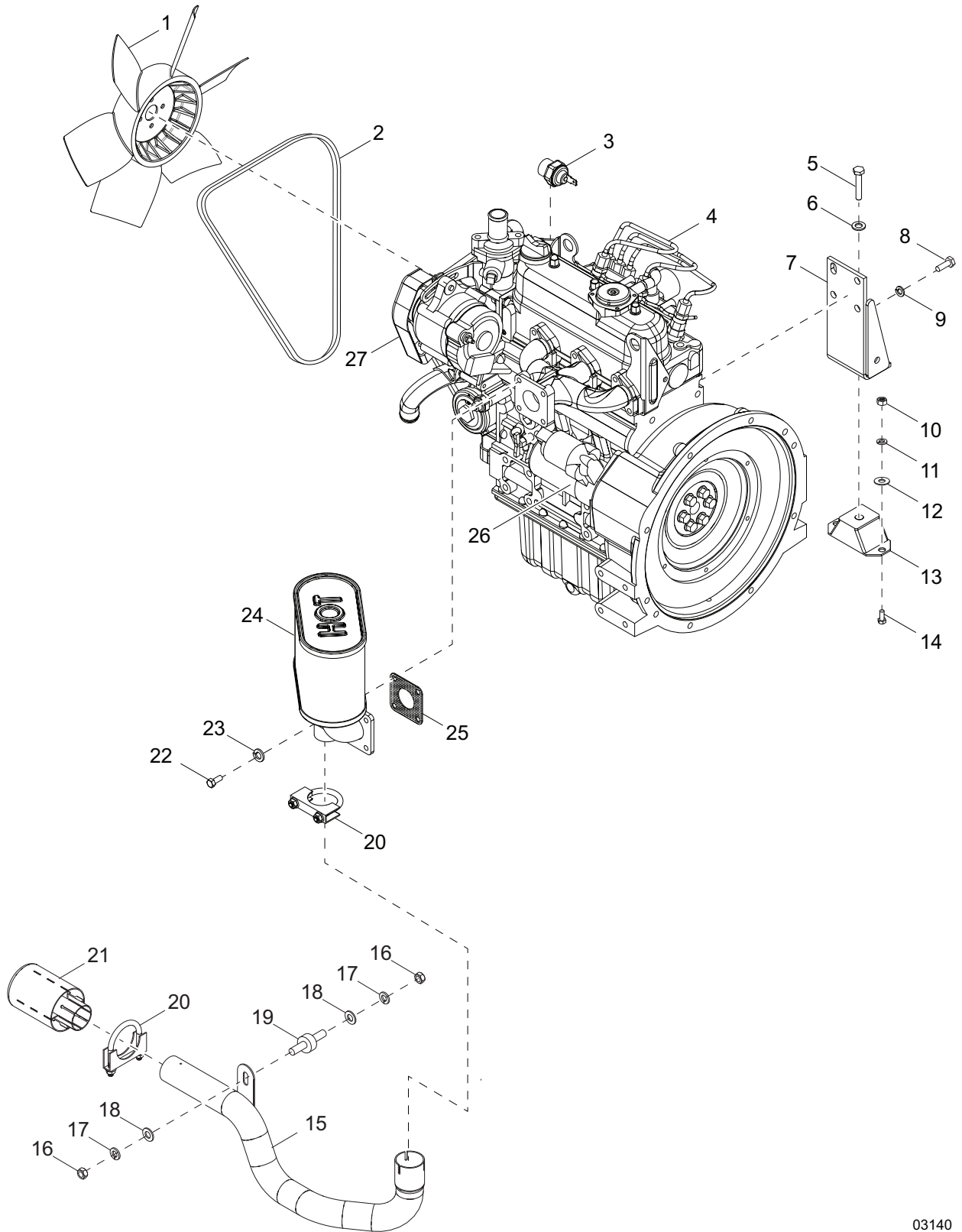


02682

## COOLING SYSTEM ASSEMBLY

Item	Part No.	Qty	Description	Notes
1	36979	1	SEAL, RUBBER, COOLING	
2	60195	18	RIVET, .188 DIA. X .375 TO .500 GRIP, LARGE FLANGE	
3	19219	1	CAP, RADIATOR PRESSURE SMALL - 14.7 PSI	
4	A0000335661	1	RADIATOR	
5	36227B	1	GUARD, FAN, LEFT	
6	60364	9	SCREW, 10-16X5.0 STD HEX, G2	
7	36232B	1	GUARD, FAN, RIGHT	
8	36233B	1	FAN SHROUD	
9	60144	1	NUT, .250-20 NYLOCK, G5	
10	60067	4	WASHER, #10 FLAT .435/.060, SS	
11	61180	2	SCREW, 10-32 X .750 PAN PHILLIPS, SS	
12	20287	1	JUG, OVERFLOW 2 QT. (.5 GAL)	
13	19714	1	CAP, OVERFLOW JUG	
14	19726	1	CLAMP, OVERFLOW BOTTLE	
15	60414	1	SCREW, .250-20 X 1.50 STANDARD HEX, G5	
16	22419B	1	BRACKET, SUPPORT OVERFLOW JUG .5 GALLON	
17	15422	4	CLAMP, HOSE - SAE 020 (.75-1.75)	
18	36977	1	HOSE, RADIATOR - UPPER	
19	60285	14	NUT .312-18 HEX, G2	
20	60271	21	WASHER, .312 SPLIT LOCK	
21	60119	24	WASHER .312 FLAT .875/.070	
22	61066	4	SCREW, .312-18 X 1.00 CARRIAGE SQ 18-8 SS	
23	60061	1	NUT, 10-32 NYLOCK	
24	12350	1	HOSE, RADIATOR - LOWER	
25	62079	4	NUT, .312-18 NYLOCK JAM	
26	60119	2	WASHER, .312 FLAT .875/.070	
27	34052	2	ISOLATOR, RUBBER 1.50 X 1.0, 5/16-18 STUDS	
28	36989	1	ROD, RADIATOR STAY	
29	60032	4	NUT, M8-1.25 HEX, G8.8	
30	60029	2	WASHER, M8 SPLIT LOCK	
31	60166	2	WASHER, M8 FLAT	

# ENGINE ASSEMBLY (1 OF 2)



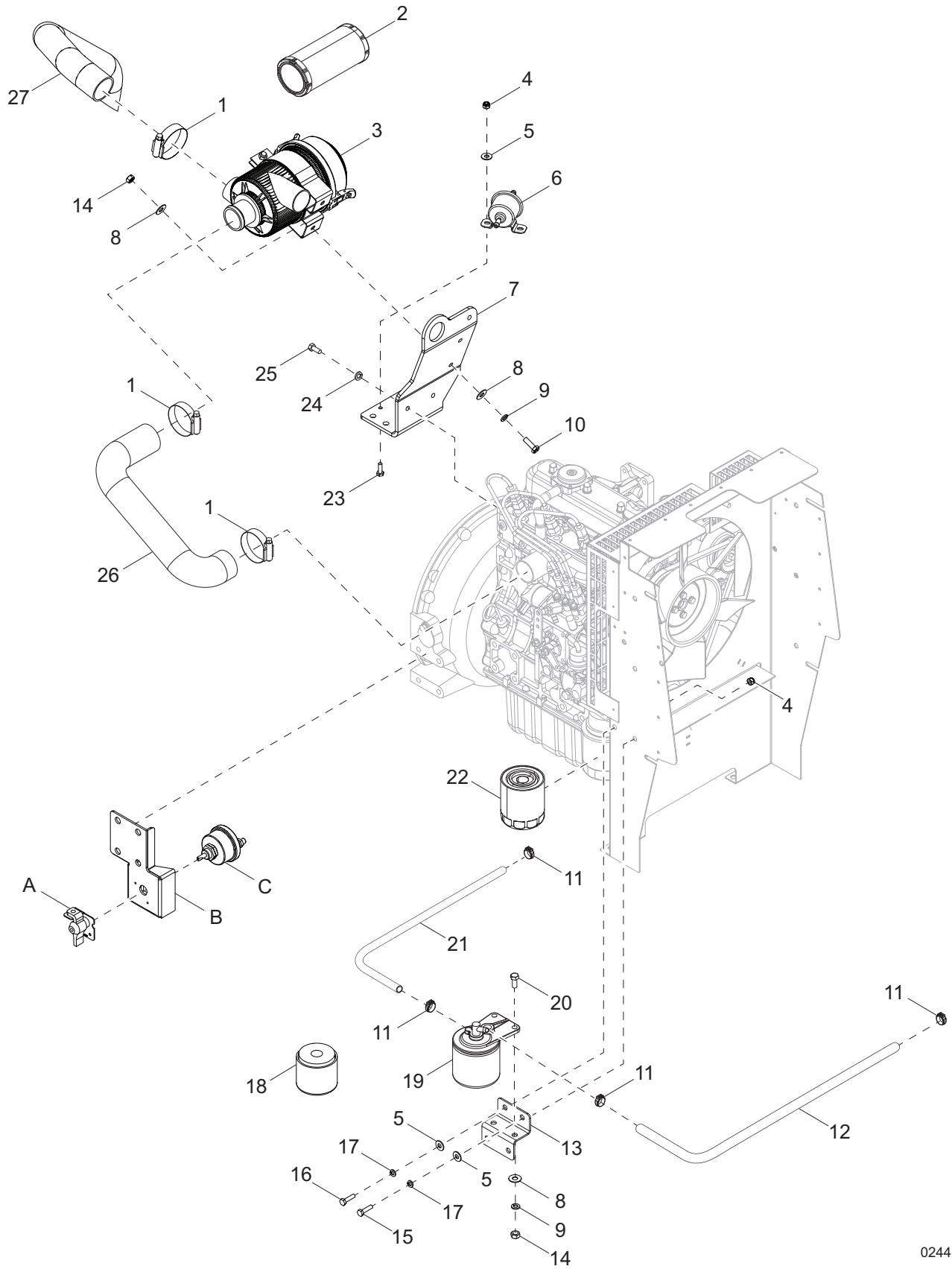
03140

## ENGINE ASSEMBLY (1 OF 2)

Item	Part No.	Qty	Description	Notes
1	15495	1	FAN, PUSHER	
2	11628	1	V-BELT	
3	14099	1	SWITCH, COOLANT TEMPERATURE	
4	13310	1	ENGINE, KUBOTA D1005-E3BG1-MGM-1	
5	60275	4	SCREW, .500-13 X 1.00 STANDARD HEX, G5	
6	60702	4	WASHER, .500 SPLIT LOCK, SS	
7	12338B	2	WELDMENT, ENGINE MOUNT	
8	60422	8	SCREW, M10-1.25 X 25 STANDARD HEX, G8.8	
9	60026	8	WASHER, M10 SPLIT LOCK	
10	60285	4	NUT, .312-18 HEX, G2	
11	60271	4	WASHER, .312 SPLIT LOCK	
12	60119	4	WASHER, .312 FLAT .875/.070	
13	15241	2	ISOLATOR, RUBBER 80-200 LBS., 2" WIDE	
14	61066	4	SCREW, .312-18 X 1.00 CARRIAGE, SS	
15	10000033352	1	TUBE, EXHAUST	
16	60285	2	NUT, .312-18 HEX, G2	
17	60271	2	WASHER, .312 SPLIT LOCK	
18	60119	2	WASHER, .312 FLAT .875/.070	
19	34052	1	ISOLATOR, 1.50 X 1.00 - .312-18 STUDS	
20	68082	2	CLAMP, MUFFLER 1.63	
21	10000021954		TIP, EXHAUST	
22	63168	4	SCREW, M8-1.25 X 30 STANDARD HEX, 10.9	
23	60029	4	WASHER, M8 SPLIT LOCK	
24	17949	1	MUFFLER	
25	11042SRV	1	GASKET, MUFFLER	
26	30582	1	STARTER, D1005	
27	12486	1	ALTERNATOR	

**Note:** Engine and generator parts used in all Generac Mobile Products, LLC equipment carry the Original Equipment Manufacturer (OEM) warranty unless otherwise stated. OEM warranty parts must be purchased through an OEM dealer. Please contact Generac Mobile Products, LLC with questions.

# ENGINE ASSEMBLY (2 OF 2)



02441

## ENGINE ASSEMBLY (2 OF 2)

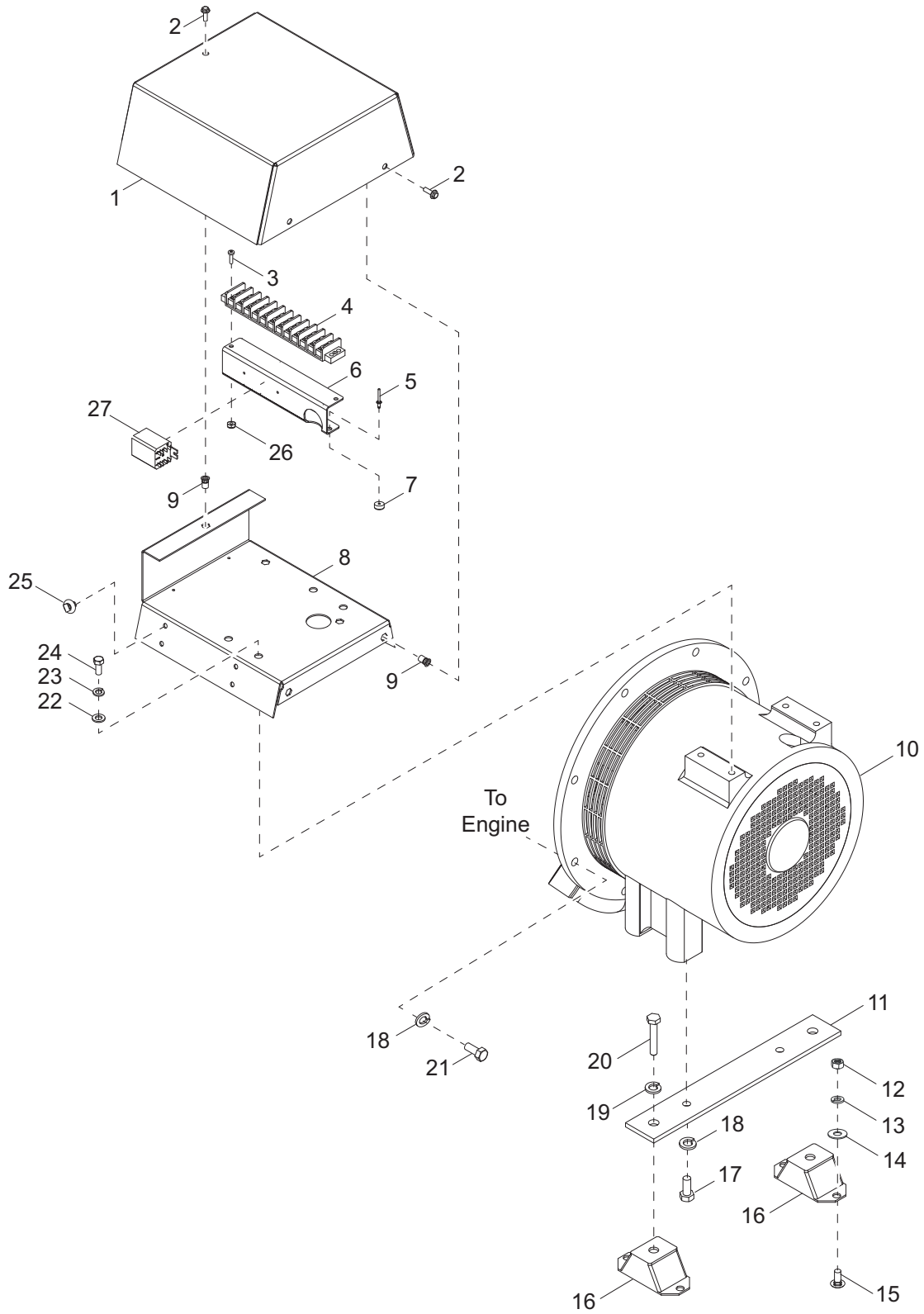
Item	Part No.	Qty	Description	Notes
1	60316	3	CLAMP, HOSE - SAE 032 (1.56-2.50)	
2	16444	1	ELEMENT, AIR FILTER	
3	10000021718	1	FILTER, AIR, W BRACKET	INCL. 16444
4	60144	3	NUT, .250-20 NYLOCK, G5	
5	60243	6	WASHER, .250 FLAT .735/.060	
6	13278SRV	1	FUEL PUMP, ELECTRIC	
7	17977B	1	BRACKET, AIR CLEANER	
8	60119	6	WASHER, .312 FLAT .875/.070	
9	60271	4	WASHER, .312 SPLIT LOCK	
10	60028	2	SCREW, .312-18 X 1.00 STANDARD HEX, G5	
11	60777	4	CLAMP, HOSE - .312 FUEL HOSE CRIMP STYLE	
12	50018	1	HOSE, FUEL - .312 ID 50 PSI SAE 30R7	
13	36234B	1	BRACKET, FUEL SYSTEM	
14	60285	4	NUT, .312-18 HEX, G2	
15	60393	1	SCREW, .250-20 X 1.00 STANDARD HEX, G5	
16	60223	1	SCREW, M6-1.00 X 20 STANDARD HEX, G4.8	
17	60286	4	WASHER, .250 SPLIT LOCK	
18	13515	1	ELEMENT, FUEL FILTER	
19	13481	1	ASSEMBLY, FUEL FILTER	INCLUDES 13515
20	62001	2	SCREW, .312-18 X 1.250 STANDARD HEX, G5	
21	A0001492951	1	HOSE, FUEL - .312 ID 50 PSI SAE 30R7	
22	10775	1	FILTER, OIL	
23	60281	2	SCREW, .250-20 X .750 STANDARD HEX, G5	
24	60026	2	WASHER, M10 SPLIT LOCK	
25	60422	2	SCREW, M10-1.25 X 25 STANDARD HEX, G8.8	
26	16589	1	HOSE, AIR CLEANER	
27	10434	1	HOSE, AIR INTAKE	

### *BATTERY DISCONNECT (If equipped):*

A	65499	1	SWITCH LOCKOUT LEVER KIT
B	10000008538	1	BRACKET, BATTERY DISCONNECT
C	65498	1	SWITCH, DISCONNECT

**Note:** Engine and generator parts used in all Generac Mobile Products, LLC equipment carry the Original Equipment Manufacturer (OEM) warranty unless otherwise stated. OEM warranty parts must be purchased through an OEM dealer. Please contact Generac Mobile Products, LLC with questions.

# GENERATOR ASSEMBLY



02683

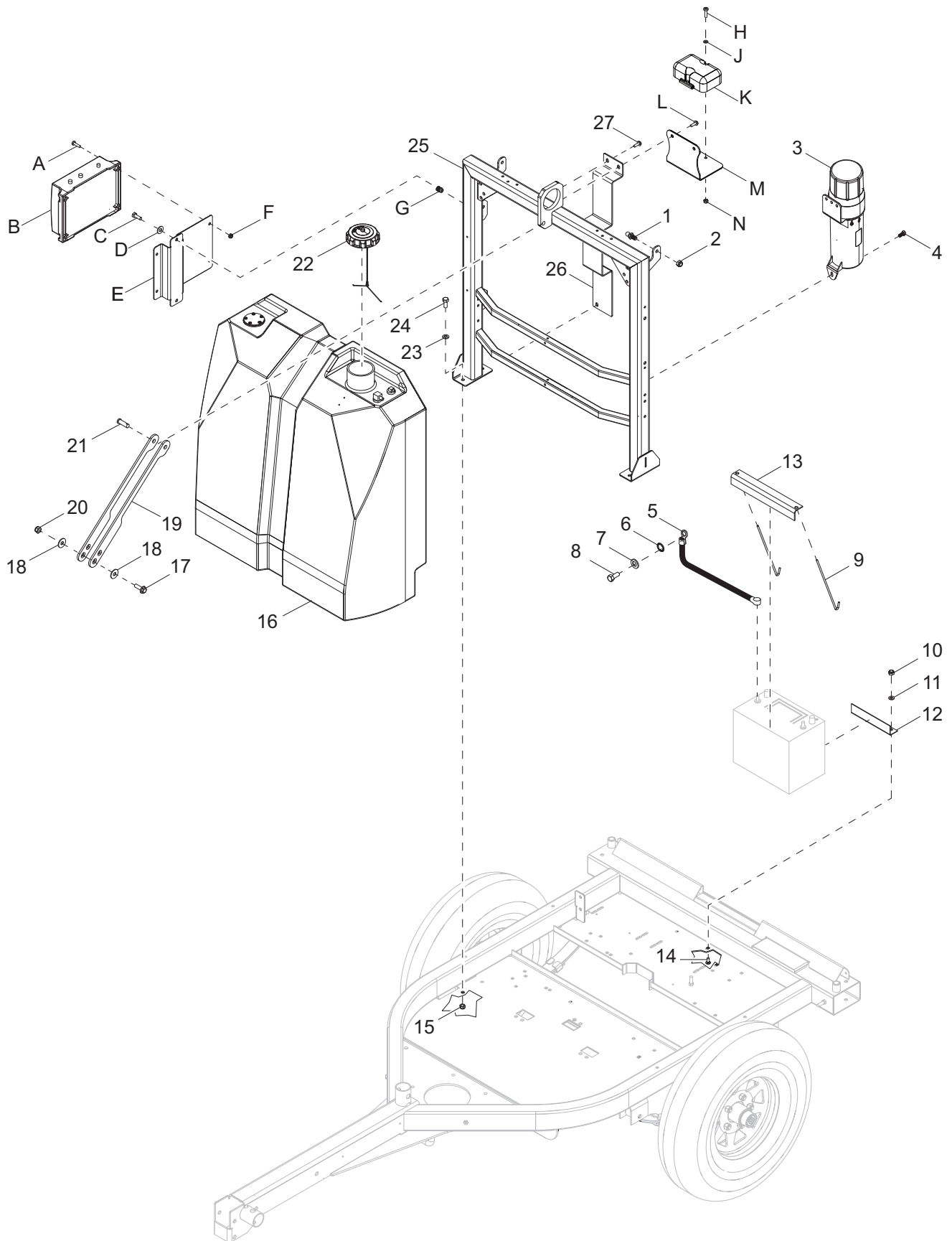


## GENERATOR ASSEMBLY

Item	Part No.	Qty	Description	Notes
1	17994B	1	COVER, GENERATOR, MARATHON	
2	60175	4	SCREW, .250-20X.500 SERRATED FLG HEX, G5	
3	60062	2	SCREW, 10-32 X .750 PAN PHILLIPS, G2	
4	14139	1	BLOCK TERMINAL - 12 POSITION	
5	60267	2	RIVET, .125 DIAMETER X .191 TO .270 GRIP	
6	10000034474	1	BRACKET, TERMINAL STRIP	
7	15215	2	RUBBER BUMPER	
8	54254B	1	PLATE, ELECTRIC JUNCTION	
9	63231	9	INSERT, THREADED .250-20 HEX .027-.165 GRIP	
10	10000020581	1	GENERATOR, MARATHON, 6KW, 60HZ, CAP	
11	15045B	1	BRACKET, GENERATOR MOUNTING	WITH 16556
12	60285	4	NUT, .312-18 HEX, G2	
13	60271	4	WASHER, .312 SPLIT LOCK	
14	60119	4	WASHER, .312 FLAT .875/.070	
15	61066	4	SCREW, .312-18 X 1.00 CARRIAGE, SS	
16	15241	2	ISOLATOR, RUBBER - 80-200 LB	
17	60352	2	SCREW, .375-16 X 1.250 STANDARD HEX, G5	
18	60206	10	WASHER, .375 SPLIT LOCK	
19	60702	2	WASHER, .500 SPLIT LOCK, SS	
20	60275	2	SCREW, .500-13 X 1.00 STANDARD HEX, G5	
21	60352	8	SCREW, .375-16X1.250 STANDARD HEX, G5	
22	60243	4	WASHER, .250 FLAT .735/.060	
23	60271	4	WASHER, .312 SPLIT LOCK	
24	61082	4	SCREW, M8-1.25 X 20 SERRATED FLANGE HEX	
25	66685	8	MOUNT CABLE TIE, .25-.28 DIAMETER,.031-.276 GRIP	
26	60061	2	NUT, 10-32 NYLOCK	
27	G061554	1	RELAY	
--	A0002961468	1	HARN CB MAST CORD INTERCONNECT	INCL. HARDWARE
--	60168	6	SCREW, .312-18 X .750 STANDARD HEX, G5	FOR FLEX PLATE MOUNT
--	60166	18	WASHER, M8 FLAT DIN 125 HARDENED	3 EACH W/60168

**Note:** Engine and generator parts used in all Generac Mobile Products, LLC equipment carry the Original Equipment Manufacturer (OEM) warranty unless otherwise stated. OEM warranty parts must be purchased through an OEM dealer. Please contact Generac Mobile Products, LLC with questions.

# COMPONENTS TO TRAILER ASSEMBLY



03999

## COMPONENTS TO TRAILER ASSEMBLY

Item	Part No.	Qty	Description	Notes
1	35293	2	BALL STUD, 10MM, .313-18	
2	60303	4	NUT, .312-18 NYLOCK, G2	
3	36988	1	MANUAL HOLDER, 4 IN DIA. BLACK FOOT MTG	
4	60168	2	SCREW, .312-18X.750 STD HEX G5 ZC	
5	10699	1	CABLE, BATTERY - 24" 4GA, .375 LUG, BLACK	
6	60747	1	WASHER, .375 INTERNAL STAR	
7	60026	1	WASHER, M10 SPLIT LOCK	
8	60495	1	SCREW, M10-1.25 X 16 HEX, G8.8	
9	60820	2	BOLT, J - .250-20 X 9.0	
10	60303	1	NUT, .312-18 NYLOCK, G2	
11	60119	2	WASHER, .312 FLAT .875/.070	
12	17992B	1	BRACKET, BATTERY STOP	
13	12924B	1	ANGLE, BATTERY HOLD-DOWN	
14	61066	2	SCREW, .312-18 X 1.00 CARRIAGE, SS	
15	62086	6	NUT, .312-18 U-CLIP - SHORT TYPE	
16	69919	1	TANK, FUEL - 42 GAL W/SENDING UNIT	
17	60484	2	SCREW, .500-13 X 2.00 STANDARD HEX, G5	
18	60309	4	WASHER, .500 FLAT 1.060/.090	
19	39660B	2	BAR, CHASSIS SUPPORT	
20	62221	2	NUT, .500-13 NYLOCK, G5	
21	63325	1	PIN, CLEVIS - .500 DIAMETER. X 1.063 UL, ZP	
22	16326	1	CAP, FUEL, 3.5 DIAMETER., DIESEL, VENT W/ TETHER	
23	60386	4	WASHER, .375 FLAT .993-.064	
24	60352	4	SCREW, .375-16 X 1.250 STANDARD HEX, G5	
25	10000023283	1	WELDMENT, LIFT SUPPORT	
26	A0004521399	1	STB BRACKET FUEL TANK BRACE	
27	68429	3	SCREW, .312-18 X .750 FLG HEX, G2 SELF-TAP	

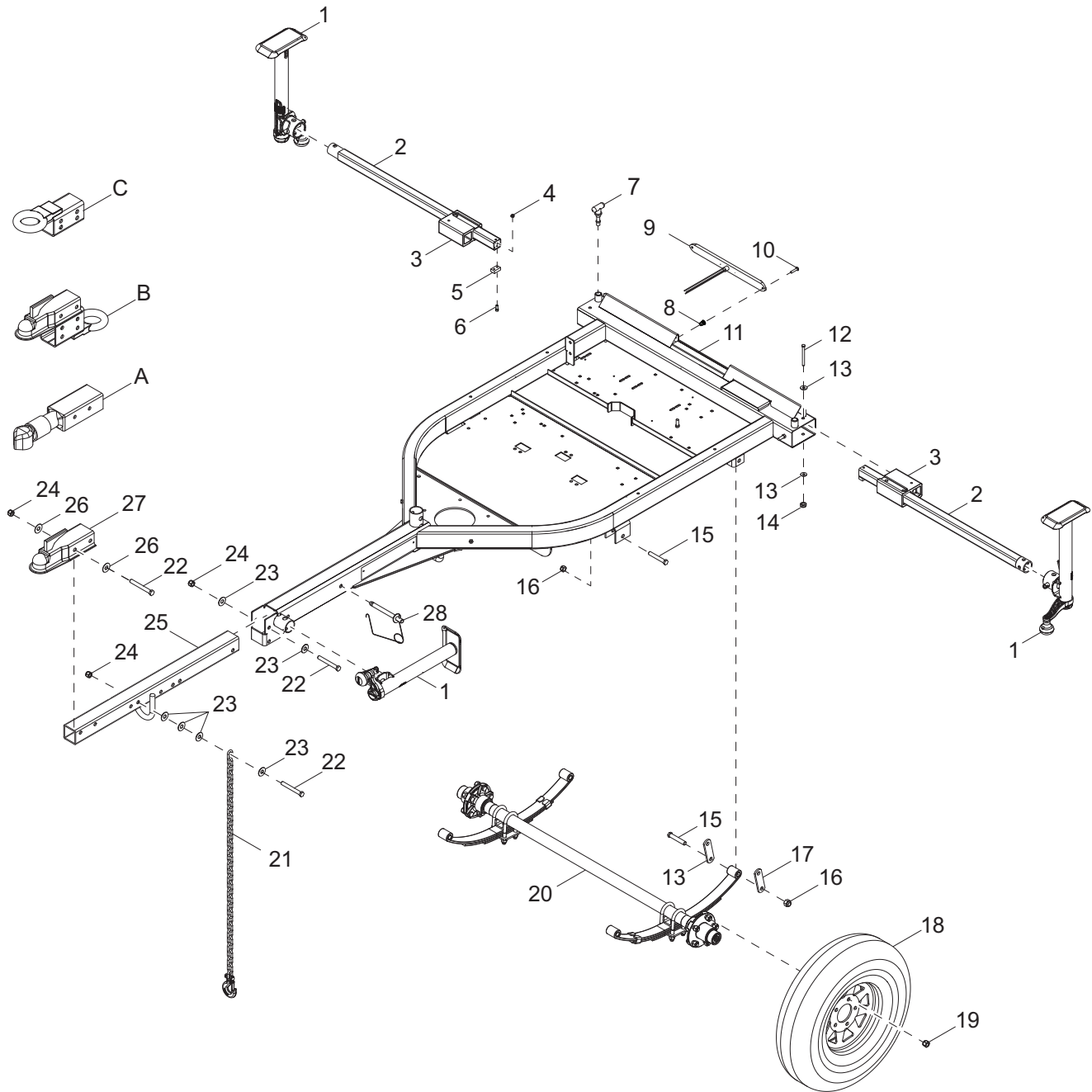
**BATTERY CHARGER (If equipped):**

A	60062	4	SCREW, 10-32 X .750 PAN PHILLIPS, G2
B	66212	1	CHARGER, BATTERY 2-5A/1-10A, 3 STAGE, 2 OUTPUT
C	60281	2	SCREW, .250-20 X .750 HEX, G5
D	60243	2	WASHER, .250 FLAT .735/.060
E	73218B	1	BRACKET, BATTERY CHARGER
F	60415	4	NUT, 10-32 NYLOCK
G	63132	2	INSERT, .250-20 SPLINED, .027-.165

**ZTR TELEMETRY (If equipped):**

H	60770	2	SCREW, M4-0.70 X 20 PAN PHILLIPS, G4.8
J	60237	2	WASHER, #10 FLAT .495/.036
K	37731	1	TELEMETRY, ZTR
L	68429	2	SCREW, .312-18 X .750 FLG HEX, G2 SELF-TAP
M	51002B	1	BRACKET, ZTR MOUNTING
N	60051	2	NUT, M4-0.70 NYLOCK, G8.8
--	68431	1	LIFT SUPPORT (MODIFIED 28341B)

# TRAILER ASSEMBLY



02444

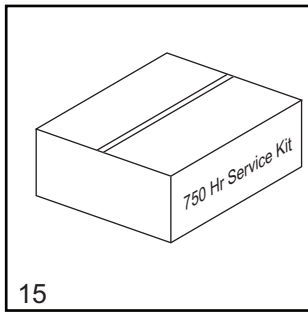
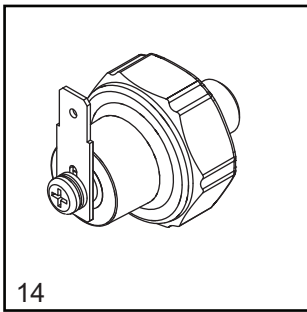
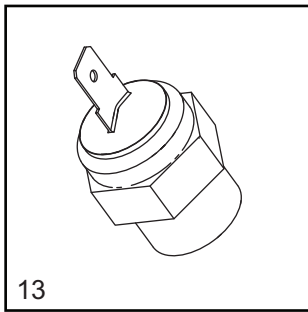
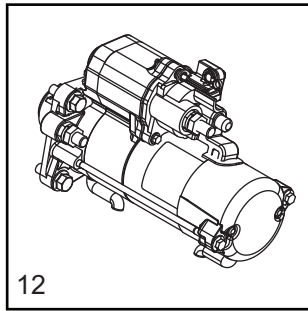
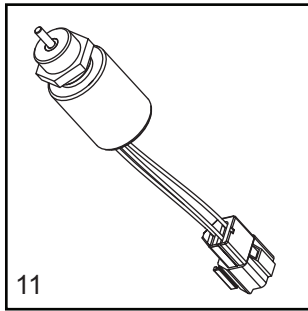
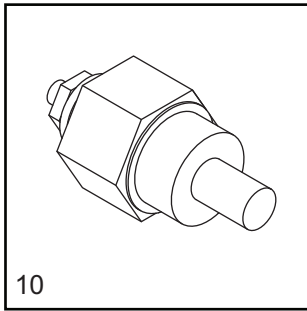
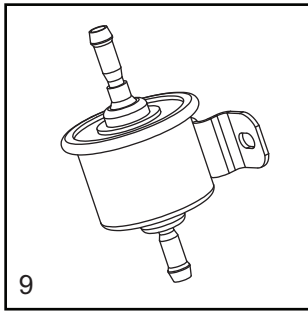
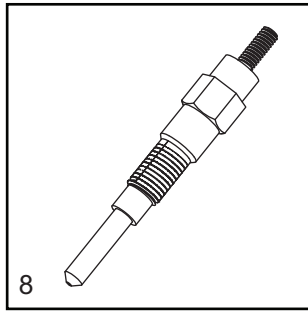
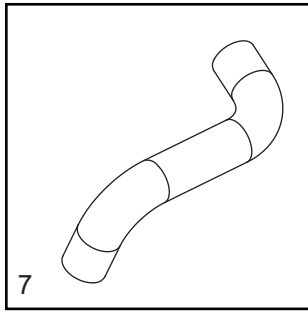
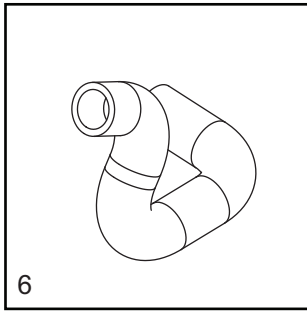
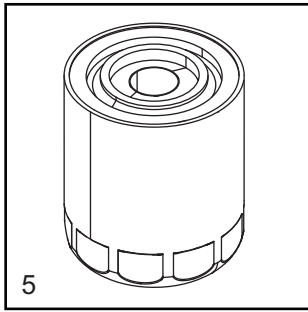
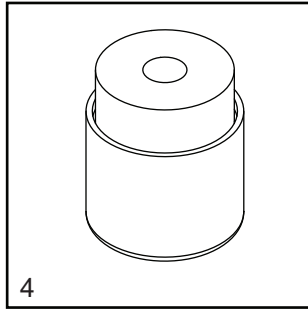
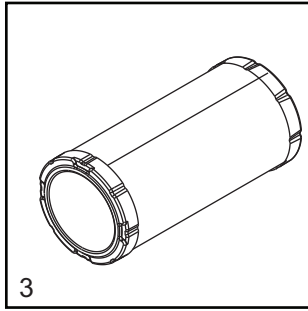
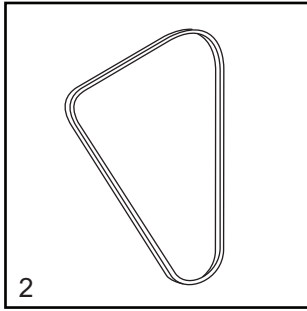
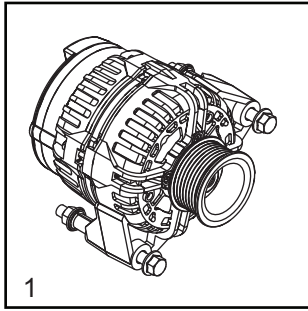
## TRAILER ASSEMBLY

Item	Part No.	Qty	Description	Notes
1	72126	3	JACK, TOP WIND - 1200 LB, TUBE MOUNTED	
2	70230ZY	2	WELDMENT, OUTRIGGER TUBE	
3	36869	2	GUIDE BLOCK (MOLDED) - OUTRIGGER	
4	60144	4	NUT, .250-20 NYLOCK, G5	
5	72128	2	PAD/STOP, WEAR - OUTRIGGER	
6	73196	4	SCREW, .250-20 X 2.25 SOCKET HEAD	
7	36890	3	SPRING PIN, HANDLE	
8	73092	4	INSERT, #8-32 .020-.080 GRIP - CLOSE SEALED	
9	36960	2	ASSEMBLY, TAIL LIGHT	
10	60694	4	SCREW, 8-32 X .750 PAN PHILLIPS	
11	10000021817	1	WELDMENT, LT CHASSIS	
12	60404	2	SCREW, .312-18 X 4.00 STANDARD HEX, G5	
13	60119	4	WASHER, .312 FLAT .875/.070	
14	60303	2	NUT, .312-18, NYLOCK, G2	
15	60503	6	SCREW, SHACKLE, .562-18 X 3.00 STANDARD HEX, G5	
16	60504	6	NUT, .562-18 LOCK HEX, G5	
17	19637	4	PLATE, SHACKLE BRACKET - 3.125"	
18	15976B	2	WHEEL, ST175/8013 - 1360 LB	
19	60096	10	NUT, .500-20 LUG, G5	
20	34760	1	AXLE, 2200LB 47TC 35SC	
21	23367	2	CHAIN, SAFETY - 7800 LBS RATED	
22	50215	5	SCREW, .500-13 X 4.00 STANDARD HEX, G5	
23	60416	10	WASHER, .500 FLAT 1.375/.090	
24	62221	5	NUT, .500-13 NYLOCK, G5	
25	17969B	1	WELDMENT, TILT TONGUE	
26	60309	4	WASHER, .500 FLAT 1.060/.090	
27	16830	1	COUPLER, 2.00 BALL/2.50 CHANNEL	
28	33943	2	PIN, LOCKING .500 X 3.50	
--	68348	1	HARNESS, TRAILER WIRING, TANDEM TOW	
--	68324	1	HARNESS, TRAILER ENCLOSURE FRONT	
--	10000020727	1	ASSEMBLY, HARNESS EXTENSION LOOMED	

**HITCH OPTIONS (If equipped):**

A	13003B	1	COUPLER, 2.00 BALL/3.00 CHANNEL, BULLDOG
B	34792ZC	1	WELDMENT, COMBINATION HITCH - 2.50 TONGUE
C	16835B	1	WELDMENT, LUNETTE RING 3.00 ID - 2.50 TONGUE
--	65464	1	ADAPTER, 4 PIN FLAT TO 4 PIN FLAT X 12.00

# RECOMMENDED SPARE PARTS - ENGINE AND SERVICE KITS



## RECOMMENDED SPARE PARTS - ENGINE AND SERVICE KITS

---

### ENGINE

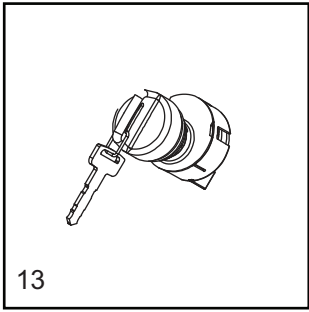
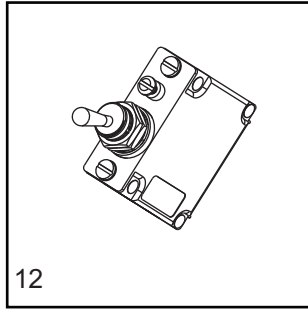
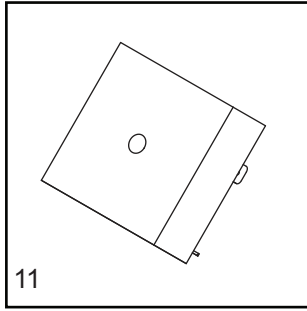
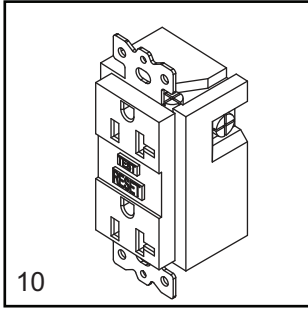
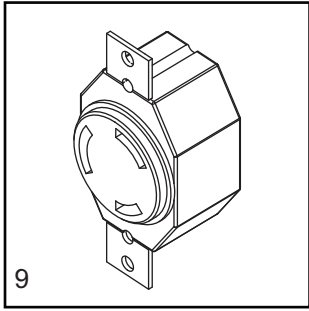
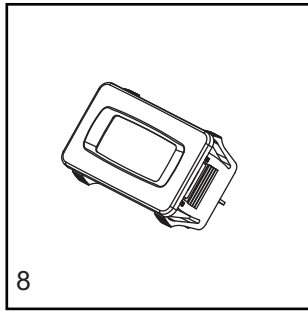
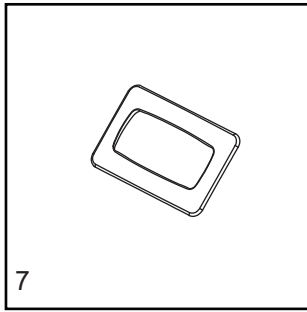
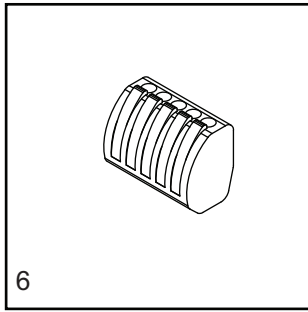
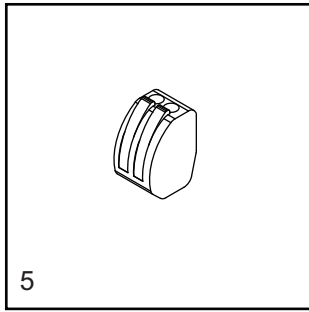
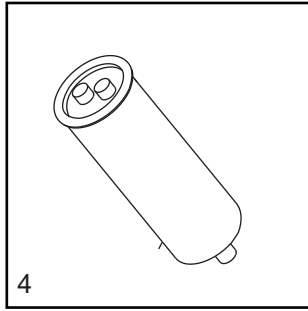
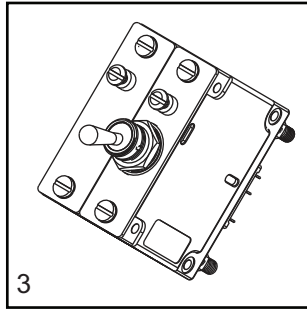
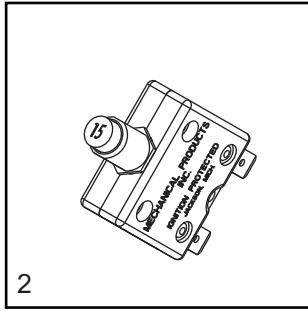
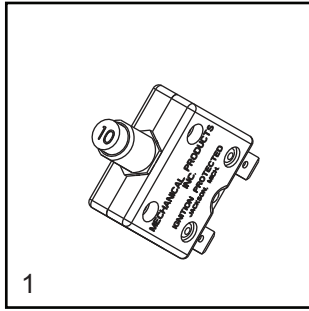
1. ALTERNATOR .....	12486
2. BELT, V .....	11628
3. FILTER, AIR (ELEMENT) .....	16444
4. FILTER, FUEL ELEMENT .....	13515
5. FILTER, OIL, KUBOTA D1005/D1105 .....	10775
6. HOSE, LOWER RADIATOR .....	12350
7. HOSE, UPPER RADIATOR .....	36977
8. PLUG, GLOW (START SN 489916) .....	13238
9. PUMP, FUEL .....	13278SRV
10. SENDER, COOLANT TEMP .....	12873
11. SOLENOID, FUEL SHUTDOWN (2 WIRE) .....	13018
12. STARTER- D850 .....	30582
13. SWITCH, COOLANT TEMPERATURE - D850 .....	14099
14. SWITCH, OIL PRESSURE, D905 .....	15375

### SERVICE KITS

15. 750 HOUR KIT .....	10000036039
------------------------	-------------

INCLUDES: AIR FILTER ELEMENT 10000035428, FUEL FILTER ELEMENT 13515 AND OIL FILTER 10775

# RECOMMENDED SPARE PARTS - ELECTRICAL





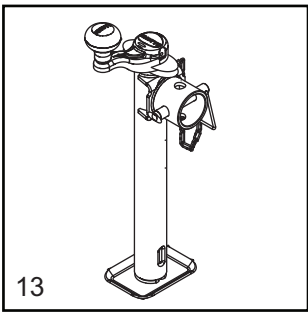
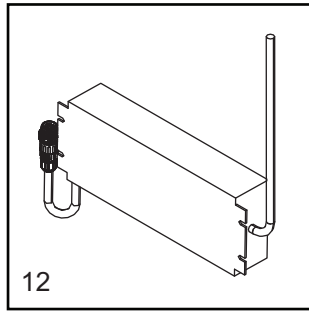
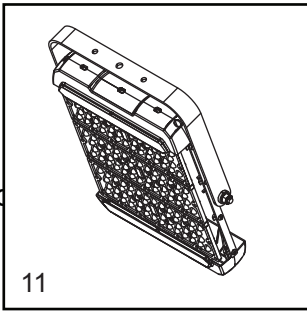
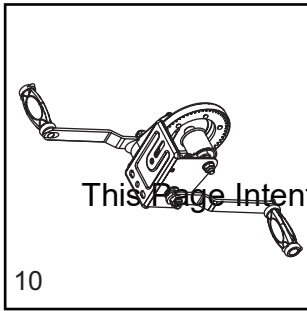
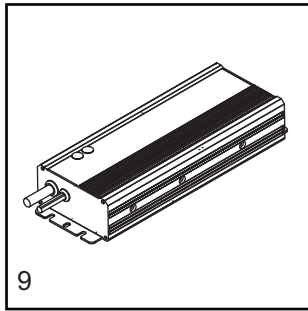
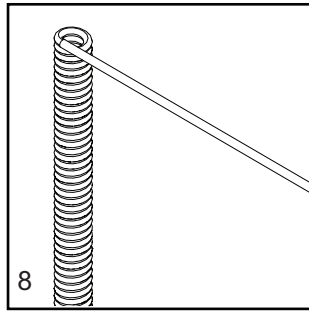
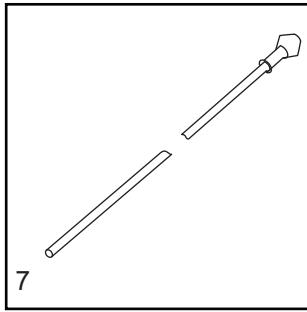
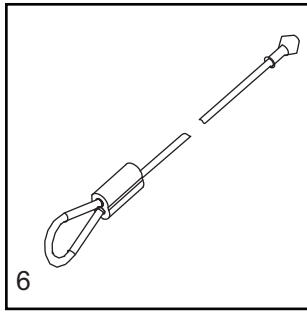
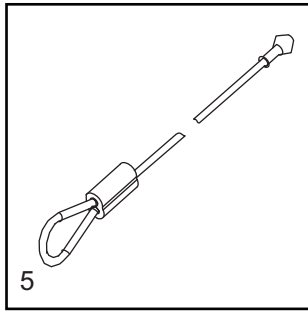
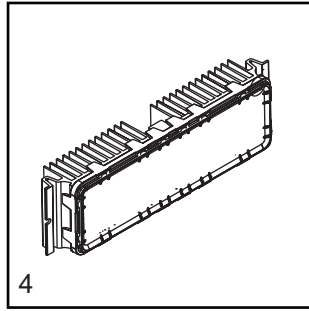
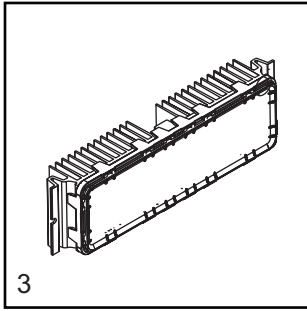
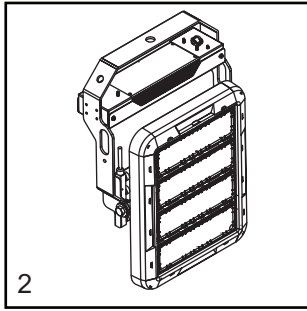
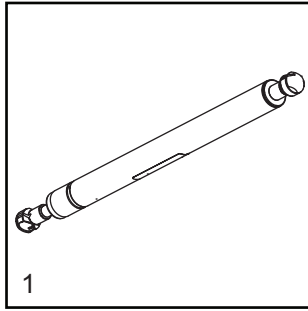
## RECOMMENDED SPARE PARTS - ELECTRICAL

---

### ELECTRICAL

1. BREAKER, 10A, 240V, 1 POLE, PUSH BUTTON.....	36937
2. BREAKER, 15A, 120V, 1 POLE, PUSH BUTTON, 8KW .....	36935
3. BREAKER, 30A, 250A, 2 POLE, 6KW .....	36975
4. CAPACITOR, 25MF 5% 440VAC .....	36980
5. CONNECTOR, 2 POSITION (QTY - 4) .....	66100
6. CONNECTOR, 5 POSITION (QTY - 2) .....	66102
7. GASKET, HOUR METER .....	36944
8. GAUGE, HOUR METER .....	36886
9. RECEPTACLE, 240V/30A TWIST .....	14137
10. RECEPTACLE, 120V/20A GFI .....	14130
11. RELAY, 10A SPDT 15 SECOND TIME DELAY .....	14201
12. SWITCH, 10 AMP .....	10000035999
13. SWITCH, KEY .....	36882

# RECOMMENDED SPARE PARTS - MISC



This Page Intentionally Left Blank

**ENCLOSURE**

1. GAS SHOCK ..... 35137

**MAST**

2. ASSEMBLY, LED LIGHT ..... CALL  
3. MODULE 60 DEGREE LED ..... 10000019170  
4. MODULE 40 DEGREE LED ..... 10000019160  
5. CABLE, 79.75 IN ..... 31248  
6. CABLE, 78 IN ..... 31277  
7. CABLE, 144 IN ..... 31247  
8. COIL CORD W/ 155 INCH TAIL (MAST BOX TO CONTROL BOX)..... A0000108466  
9. DRIVER, LED 30V, 10.7A, 321W ..... 72178  
10. WINCH, MANUAL, INCLUDES DUAL HANDLE ..... 72127  
11. ASSEMBLY, LED LIGHT 320W..... A0001904532  
12. ASSEMBLY, DRIVER WITH CONNECTOR ..... A0000188779

**JACKS**

13. JACK, TOP WIND, 1200 LB ..... 72126





Part No. 10000034707 Rev. H 09/30/2024

©2024 Generac Power Systems, Inc.

All rights reserved.

Specifications are subject to change without notice.

No reproduction allowed in any form without prior written consent from Generac Power Systems, Inc.



Generac Power Systems, Inc.

S45 W29290 Hwy. 59, Waukesha WI 53189

[GeneracMobileProducts.com](https://www.GeneracMobileProducts.com) | 844-ASK-GNRC | 844-275-4672