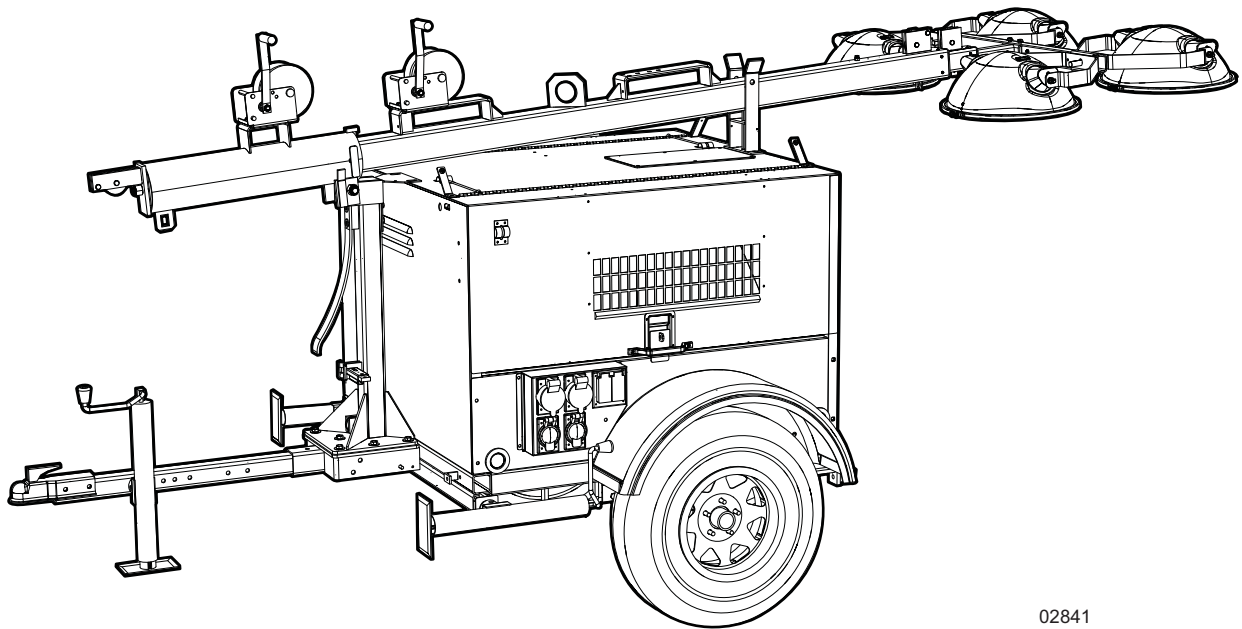


# ***MLT4200IF4***

## *Diesel Light Tower Parts Manual*



02841

MODEL NUMBER: \_\_\_\_\_

SERIAL NUMBER: \_\_\_\_\_

DATE PURCHASED: \_\_\_\_\_

***SAVE THIS MANUAL FOR FUTURE REFERENCE***

 **WARNING**

**CANCER AND REPRODUCTIVE HARM**

[www.P65Warnings.ca.gov](http://www.P65Warnings.ca.gov).

(000393a)

 **WARNING**

Breathing diesel engine exhaust exposes you to chemicals known to the State of California to cause cancer and birth defects or other reproductive harm.

- Always start and operate the engine in a well-ventilated area.
- If in an enclosed area, vent the exhaust to the outside.
- Do not modify or tamper with the exhaust system.
- Do not idle the engine except as necessary.

For more information go to

[www.P65Warnings.ca.gov/diesel](http://www.P65Warnings.ca.gov/diesel). (000394)

# Introduction

This parts manual was prepared based on the information available at the time of publication and is subject to change without notice. Generac Mobile Products reserves the right to change parts at any time. To check whether a revised parts manual is available, contact Generac Mobile Products.

DO NOT MODIFY or use this equipment for any application other than which it was designed for. To keep your equipment fully operational, it is suggested you maintain a stock of commonly used maintenance or service parts. A recommended spare parts list can be found in the back of this manual. To order service parts, please go to [www.generacmobileproducts.com](http://www.generacmobileproducts.com) or call Generac Mobile Products.



## **WARNING**

Consult Manual. Read and understand manual completely before using product. Failure to completely understand manual and product could result in death or serious injury.

(000100a)

---

## **WARNING**

Environmental Hazard. Always recycle batteries at an official recycling center in accordance with all local laws and regulations. Failure to do so could result in environmental damage, death, or serious injury.

(000228)

## **GENERAC MOBILE PRODUCTS LLC**

**215 Power Drive • Berlin, WI 54923 U.S.A.**

**Phone: 920-361-4442**

**FAX: 920-361-4416**

**Toll Free: 1-800-926-9768**

**[www.generacmobileproducts.com](http://www.generacmobileproducts.com)**

**For technical or parts QUESTIONS, contact Generac Mobile Products Technical Service at 1-800-926-9768.**

Engine Make: \_\_\_\_\_

Engine Serial Number: \_\_\_\_\_

Engine Model Number: \_\_\_\_\_

This Page Intentionally Left Blank

# Table of Contents

Introduction .....	iii
Parts Manual Instructions .....	1
Unit Decals - Exterior .....	2
Unit Decals - Interior .....	4
Mast, Junction Box and Lights to Unit .....	6
Light Assembly - 1000-1050 Watt .....	8
Light Assembly - 1100 Watt .....	10
Mast Junction Box Assembly .....	12
Mast Assembly .....	14
Roof and Doors to Unit .....	16
Door Insulation .....	18
Front, Rear and Side Panels to Unit .....	20
Receptacle Box Assembly .....	22
Receptacle Panel Options .....	24
Control Box and Fuel System to Unit .....	26
Control Box Assembly .....	28
Cooling System Assembly .....	30
Engine and Generator to Unit .....	32
Engine Assembly - Left Side .....	34
Engine Assembly - Right Side .....	36
Generator Assembly .....	38
Fuel Tank Assembly .....	40
Trailer Assembly .....	42
Axle Assembly .....	44
Recommended Spare Parts - Engine and Service Kits .....	46
Recommended Spare Parts - Electrical .....	48
Recommended Spare Parts - Misc .....	50

This Page Intentionally Left Blank

# Parts Manual Instructions

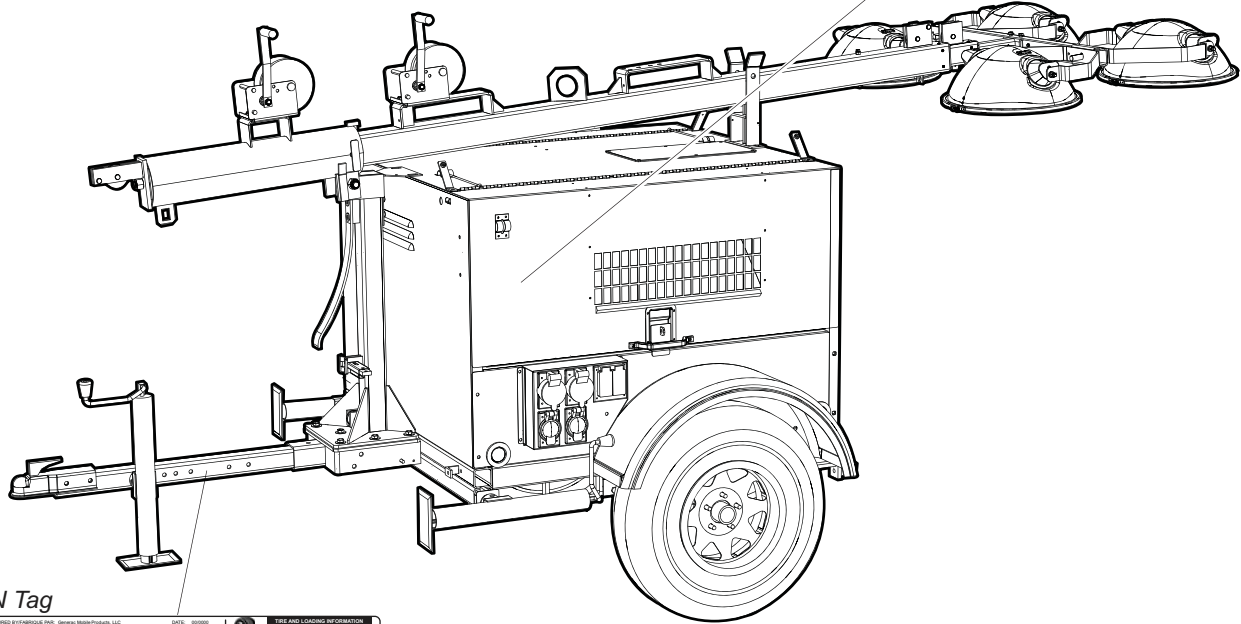
Product illustrations are only representations. Products supplied may vary from the illustrations in this parts manual. Parts not shown in the illustration are indicated by a double dash (--) in the item column.

Please be prepared to provide the following information when ordering replacement parts: model number, serial number (on unit serial tag), part number, purchase order number (if applicable), shipping address, shipping method.

Refer to the illustration below to locate the unit ID tag and Vehicle Identification Number (VIN) tag on the unit. Important information, such as the unit serial number, model number, VIN and tire loading information are found on these tags. Record the information from these tags so it is available if the tags are lost or damaged. When ordering parts or requesting assistance, you may be asked to provide this information.

*Unit ID Tag  
Located on inside  
of front panel*

Manufactured by Generac Mobile Products LLC		
0000000000		
Country of Origin	Model	Serial Number
Manufacturing Code	Weight (lb/kg)	Other Identifying
Color		
1. In. 1.000"	2. In. 2.000"	3. In. 3.000"
4. In. 4.000"	5. In. 5.000"	6. In. 6.000"
7. In. 7.000"	8. In. 8.000"	9. In. 9.000"
10. In. 10.000"	11. In. 11.000"	12. In. 12.000"
13. In. 13.000"	14. In. 14.000"	15. In. 15.000"
16. In. 16.000"	17. In. 17.000"	18. In. 18.000"
19. In. 19.000"	20. In. 20.000"	21. In. 21.000"
22. In. 22.000"	23. In. 23.000"	24. In. 24.000"
25. In. 25.000"	26. In. 26.000"	27. In. 27.000"
28. In. 28.000"	29. In. 29.000"	30. In. 30.000"
31. In. 31.000"	32. In. 32.000"	33. In. 33.000"
34. In. 34.000"	35. In. 35.000"	36. In. 36.000"
37. In. 37.000"	38. In. 38.000"	39. In. 39.000"
40. In. 40.000"	41. In. 41.000"	42. In. 42.000"
43. In. 43.000"	44. In. 44.000"	45. In. 45.000"
46. In. 46.000"	47. In. 47.000"	48. In. 48.000"
49. In. 49.000"	50. In. 50.000"	51. In. 51.000"
52. In. 52.000"	53. In. 53.000"	54. In. 54.000"
55. In. 55.000"	56. In. 56.000"	57. In. 57.000"
58. In. 58.000"	59. In. 59.000"	60. In. 60.000"
61. In. 61.000"	62. In. 62.000"	63. In. 63.000"
64. In. 64.000"	65. In. 65.000"	66. In. 66.000"
67. In. 67.000"	68. In. 68.000"	69. In. 69.000"
70. In. 70.000"	71. In. 71.000"	72. In. 72.000"
73. In. 73.000"	74. In. 74.000"	75. In. 75.000"
76. In. 76.000"	77. In. 77.000"	78. In. 78.000"
79. In. 79.000"	80. In. 80.000"	81. In. 81.000"
82. In. 82.000"	83. In. 83.000"	84. In. 84.000"
85. In. 85.000"	86. In. 86.000"	87. In. 87.000"
88. In. 88.000"	89. In. 89.000"	90. In. 90.000"
91. In. 91.000"	92. In. 92.000"	93. In. 93.000"
94. In. 94.000"	95. In. 95.000"	96. In. 96.000"
97. In. 97.000"	98. In. 98.000"	99. In. 99.000"
100. In. 100.000"		

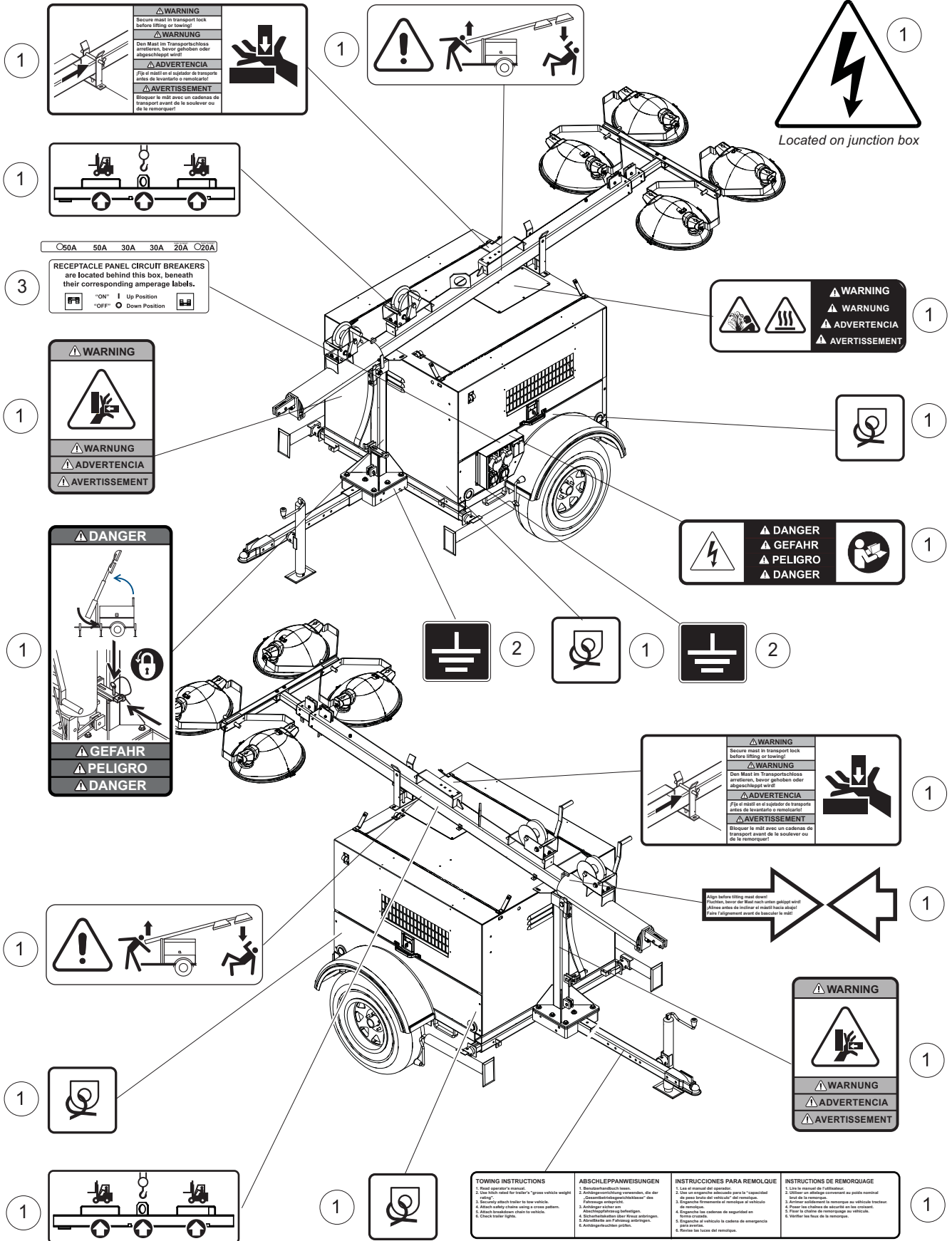


*VIN Tag*

MANUFACTURED BY GENERAC MOBILE PRODUCTS LLC		0000000000	
Country of Origin	Model	Serial Number	
Manufacturing Code	Weight (lb/kg)	Other Identifying	
Color			
1. In. 1.000"	2. In. 2.000"	3. In. 3.000"	
4. In. 4.000"	5. In. 5.000"	6. In. 6.000"	
7. In. 7.000"	8. In. 8.000"	9. In. 9.000"	
10. In. 10.000"	11. In. 11.000"	12. In. 12.000"	
13. In. 13.000"	14. In. 14.000"	15. In. 15.000"	
16. In. 16.000"	17. In. 17.000"	18. In. 18.000"	
19. In. 19.000"	20. In. 20.000"	21. In. 21.000"	
22. In. 22.000"	23. In. 23.000"	24. In. 24.000"	
25. In. 25.000"	26. In. 26.000"	27. In. 27.000"	
28. In. 28.000"	29. In. 29.000"	30. In. 30.000"	
31. In. 31.000"	32. In. 32.000"	33. In. 33.000"	
34. In. 34.000"	35. In. 35.000"	36. In. 36.000"	
37. In. 37.000"	38. In. 38.000"	39. In. 39.000"	
40. In. 40.000"	41. In. 41.000"	42. In. 42.000"	
43. In. 43.000"	44. In. 44.000"	45. In. 45.000"	
46. In. 46.000"	47. In. 47.000"	48. In. 48.000"	
49. In. 49.000"	50. In. 50.000"	51. In. 51.000"	
52. In. 52.000"	53. In. 53.000"	54. In. 54.000"	
55. In. 55.000"	56. In. 56.000"	57. In. 57.000"	
58. In. 58.000"	59. In. 59.000"	60. In. 60.000"	
61. In. 61.000"	62. In. 62.000"	63. In. 63.000"	
64. In. 64.000"	65. In. 65.000"	66. In. 66.000"	
67. In. 67.000"	68. In. 68.000"	69. In. 69.000"	
70. In. 70.000"	71. In. 71.000"	72. In. 72.000"	
73. In. 73.000"	74. In. 74.000"	75. In. 75.000"	
76. In. 76.000"	77. In. 77.000"	78. In. 78.000"	
79. In. 79.000"	80. In. 80.000"	81. In. 81.000"	
82. In. 82.000"	83. In. 83.000"	84. In. 84.000"	
85. In. 85.000"	86. In. 86.000"	87. In. 87.000"	
88. In. 88.000"	89. In. 89.000"	90. In. 90.000"	
91. In. 91.000"	92. In. 92.000"	93. In. 93.000"	
94. In. 94.000"	95. In. 95.000"	96. In. 96.000"	
97. In. 97.000"	98. In. 98.000"	99. In. 99.000"	
100. In. 100.000"			

02866

# UNIT DECALS - EXTERIOR



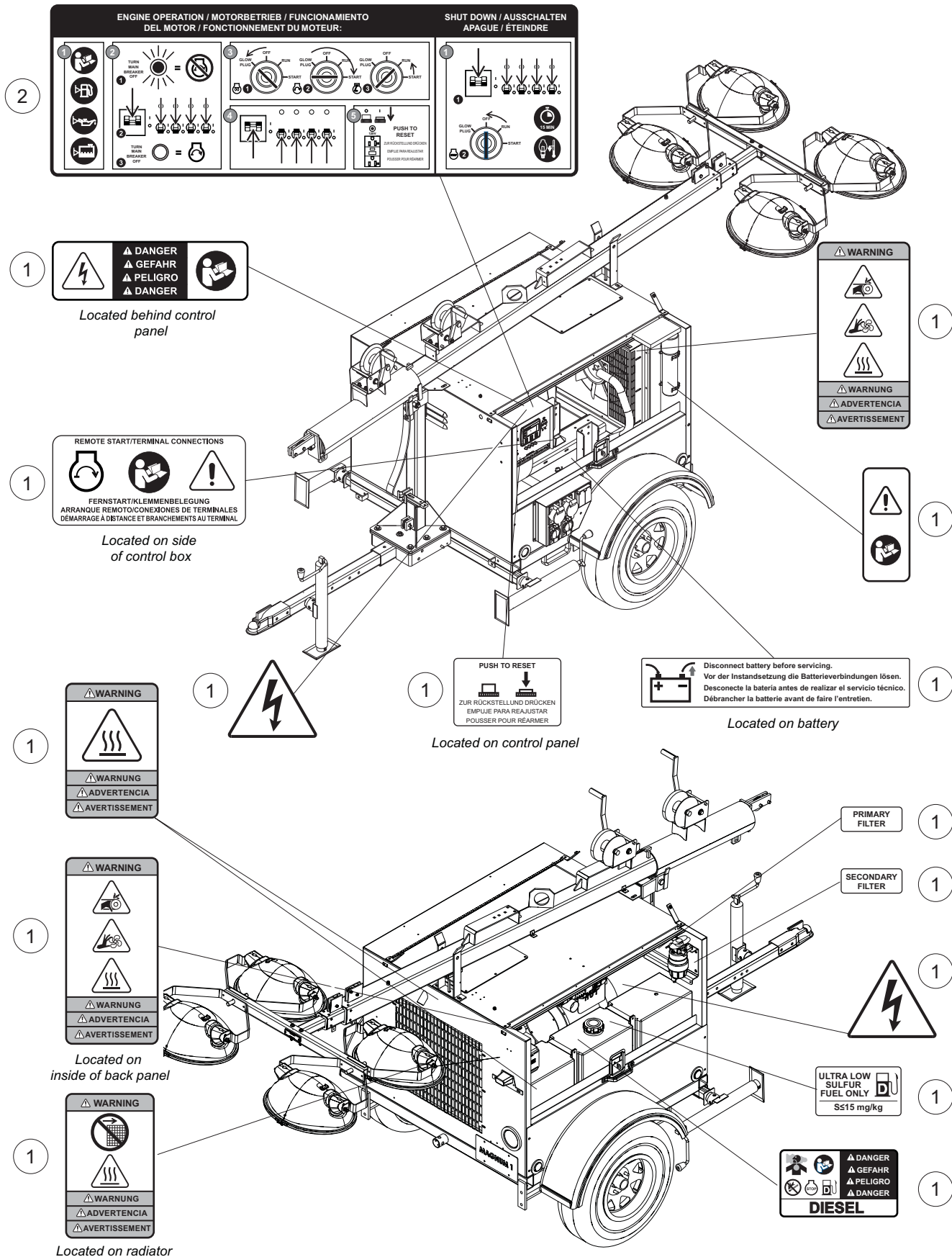


## UNIT DECALS - EXTERIOR

---

Item	Part No.	Qty	Description	Notes
1	37223	1	Decal, safety	
2	10792	1	Decal, aux outlet breakers - 50,50,30,30,20,20	
3	12142	2	Decal, ground	

# UNIT DECALS - INTERIOR

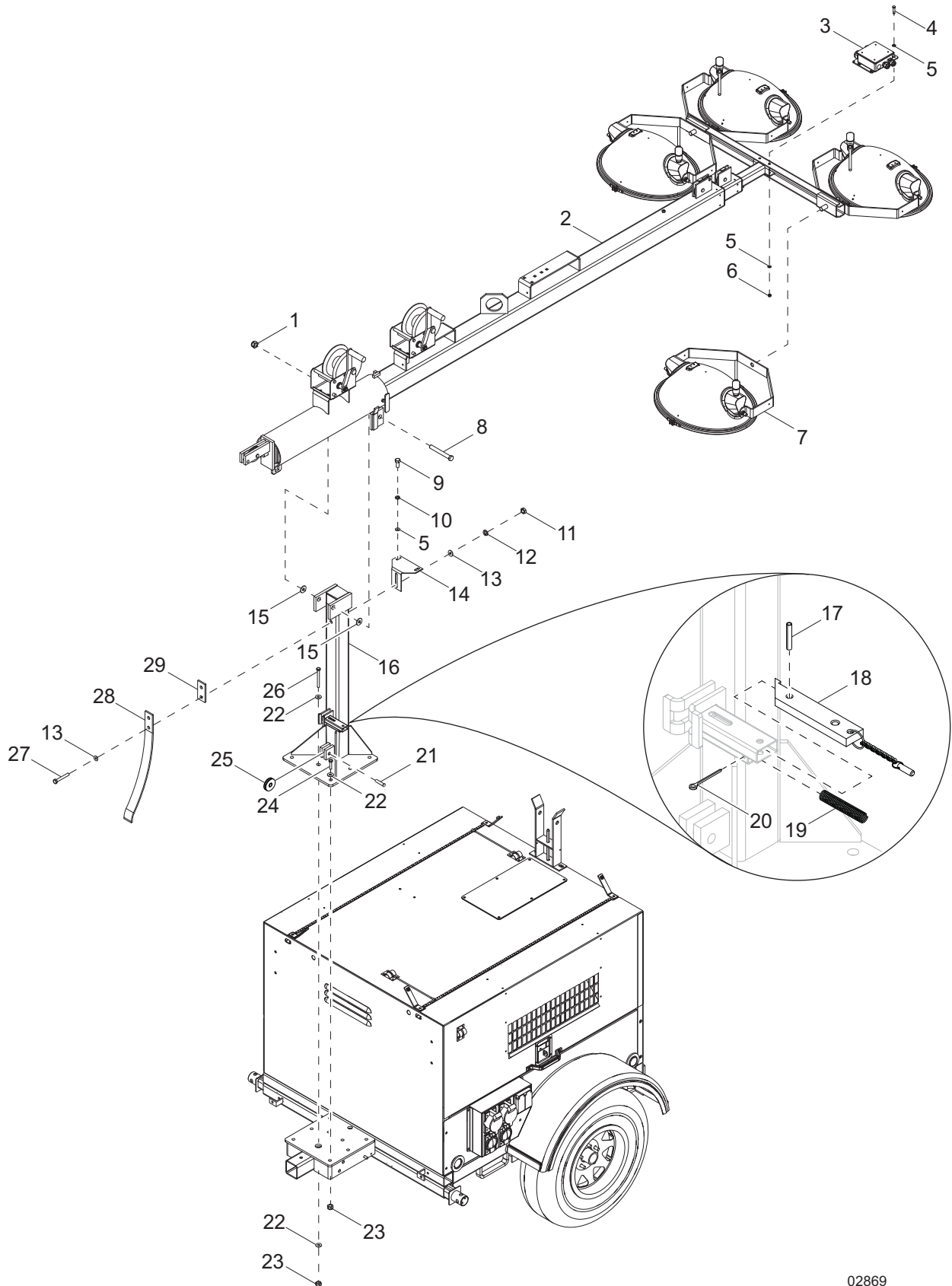


## UNIT DECALS - INTERIOR

---

Item	Part No.	Qty	Description	Notes
1	37233	1	Decal, safety	
2	37598	1	Decal, start	

# MAST, JUNCTION BOX AND LIGHTS TO UNIT



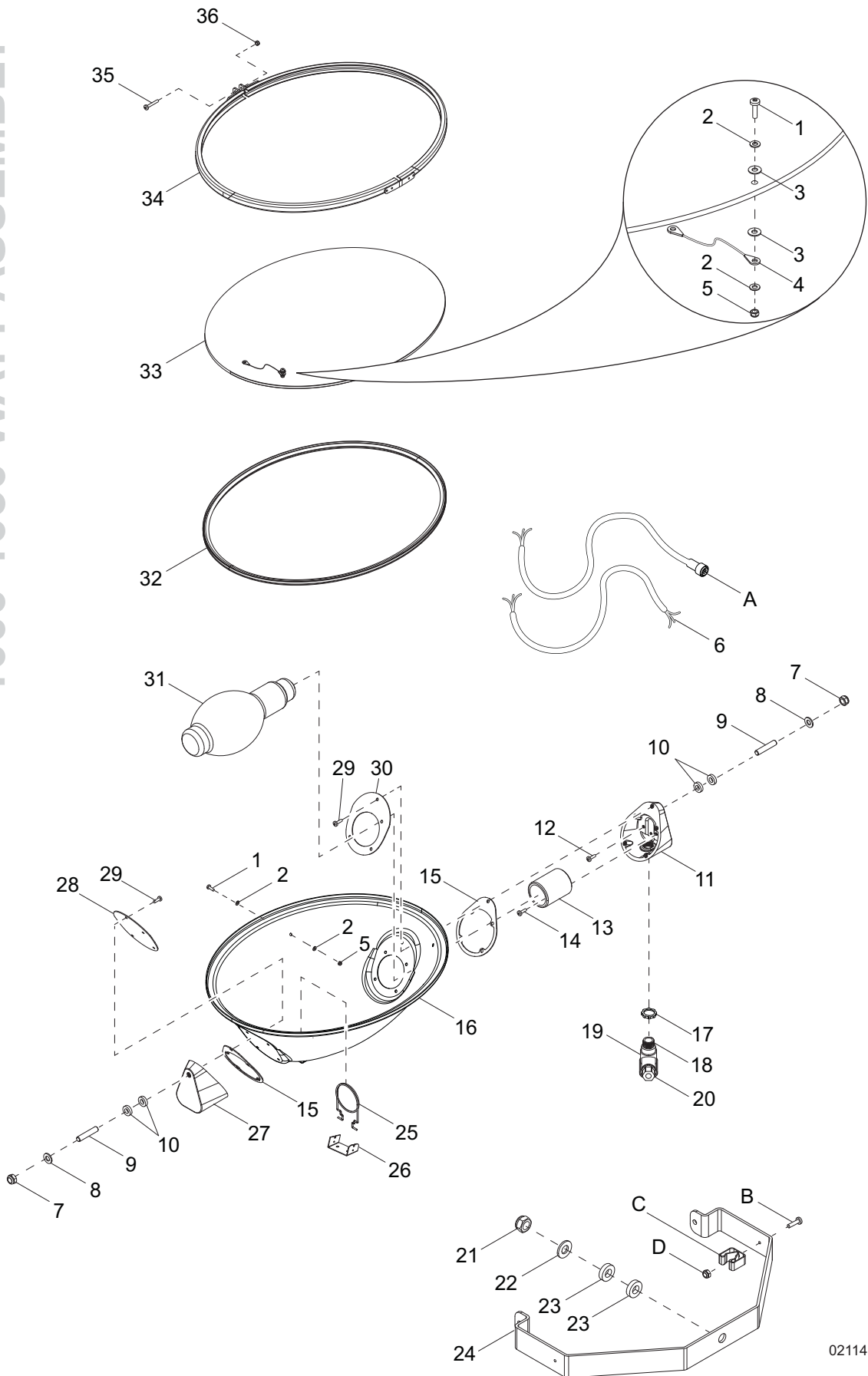
02869

## MAST, JUNCTION BOX AND LIGHTS TO UNIT

Item	Part No.	Qty	Description	Notes
1	60584	1	Nut, .750-10 nylock, G5	
2	13536	1	Assembly, mast	
3	<i>Page 12</i>	1	Assembly, mast junction box	
4	60753	2	Screw, .375-16 x 3.5 standard hex, G5	
5	60698	6	Washer, .375 flat .875/.040, SS	
6	60358	2	Nut, .375-16 nylock, G5	
7	<i>Page 10</i>	4	Assembly, light	
8	15292	1	Screw, .750-10 x 6.5 standard hex, SS	
9	60690	2	Screw, .375-16 x 1.0 standard hex, SS	
10	60703	2	Washer, .375 split lock, SS	
11	14229	2	Nut, .500-13 hex, G2	
12	60702	2	Washer, .500 split lock, SS	
13	60699	4	Washer, .500 flat 1.070/.080, SS	
14	14459B	1	Bracket, door adjustment	
15	60744	2	Washer, .750 flat 1.25/.060	
16	13700B	1	Weldment, mast post	
17	15165	1	Pin, roll - .250 x 1.25 plain	
18	11215	1	Assembly, latch bar	
19	14275	1	Spring, compression - .60 OD x 2.75 x .054	
20	15380	2	Pin, cotter - .125 x 1.25	
21	14234	1	Pin, clevis - .500 diameter x 2.0	
22	60309	10	Washer, .500 flat 1.060/.090	
23	62221	8	Nut, .500-13 nylock, G5	
24	60683	6	Screw, .500-13 x 1.5 standard hex, SS	
25	14261	1	Sheave - 2 in	
26	60659	2	Screw, .500 - 13 x 5.0 standard hex, G5	
27	60732	2	Screw, .500 - 13 x 5.5 standard hex, SS	
28	14845B	1	Spring, kickback - 50 #	
29	11554Z	1	Spacer plate - kick-back spring	

# LIGHT ASSEMBLY - 1000-1050 WATT

1000-1050 WATT ASSEMBLY



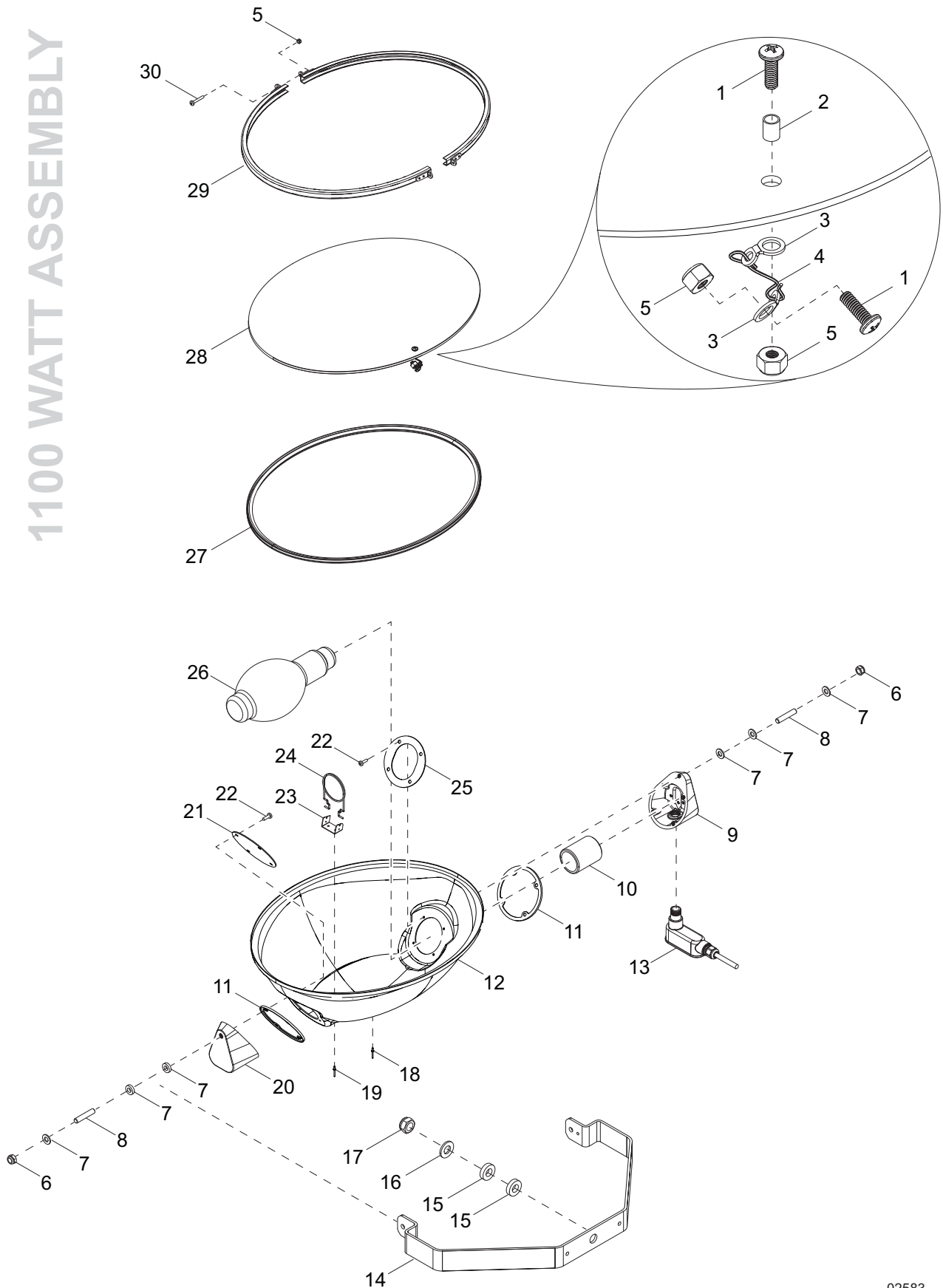
02114

## LIGHT ASSEMBLY - 1000-1050 WATT

Item	Part No.	Qty	Description	Notes
1	13399	2	Screw, M4 x 18 pan Phillips	
2	60067	4	Washer, #10 flat .435/.060, SS	
3	13372	2	Washer, #4 nylon	
4	13370	1	Assembly, tether	
5	60051	2	Nut, M4-.70 nylock, G8.8	
6	13438	1	Cord, power hard wired	
7	62221	2	Nut, .500-13 nylock, G5	
8	60309	2	Washer, .500 flat 1.060/.090	
9	13392	2	Stud, trunnion	
10	13390	4	Washer, .500 nylon	
11	13375	1	Support, housing/trunnion w/cord	
12	13393	1	Screw, M5 x 12 Phillips - green	
13	13381	1	Socket, bulb	
14	60694	2	Screw, 8-32 x .750 pan Phillips, SS	
15	10000022355	2	Gasket, silicone	
16	13366	1	Housing	
17	15861	1	Nut, special, .500NPT lock	
18	13386	1	Fitting, nipple - .500	
19	13387	1	Connector, weather-tight	
20	15864	1	Strain relief, .500NPT watertight, .270/.464 ID	
21	60584	1	Nut, .750-10 nylock, G5	
22	60247	1	Washer, .750 flat 2.020/.130	
23	63357	2	Washer, .750 flat 2.0/.062, plastic	
24	13368	1	Trunnion	
25	13892	1	Support, bulb	
26	10000022390	1	Bracket, light holder	
27	13374	1	Support, housing/trunnion without cord	
28	13377	1	Bracket, end plate	
29	13388	10	Screw, M5x12 slotted hex with flange	
30	13376	1	Bracket, socket end plate	
31	10000022381	1	Bulb, metal halide 1050W	
32	13373	1	Gasket, lens oval	
33	13369	1	Lens, glass oval	
34	13367	1	Assembly, aluminum ring	
35	60167	1	Screw, M5-.80 x 35 pan Phillips, G4.8	
36	60038	1	Nut, M5-.80 nylock	
--	10000008620	4	Assembly, light fixture - 1050W non-quick disconnect	Items 1-35
<i>Quick Disconnect: (if equipped)</i>				
A	13383	1	Cord, power quick disconnect	Replaces item 6
B	60398	1	Screw, 10-32 x .500 pan Phillips, SS	
C	19041	1	Clip, spring holder	
D	60061	1	Nut, 10-32 nylock, G5	
--	10000008612	4	Assembly, light fixture/QD cord clip	

# LIGHT ASSEMBLY - 1100 WATT

## 1100 WATT ASSEMBLY



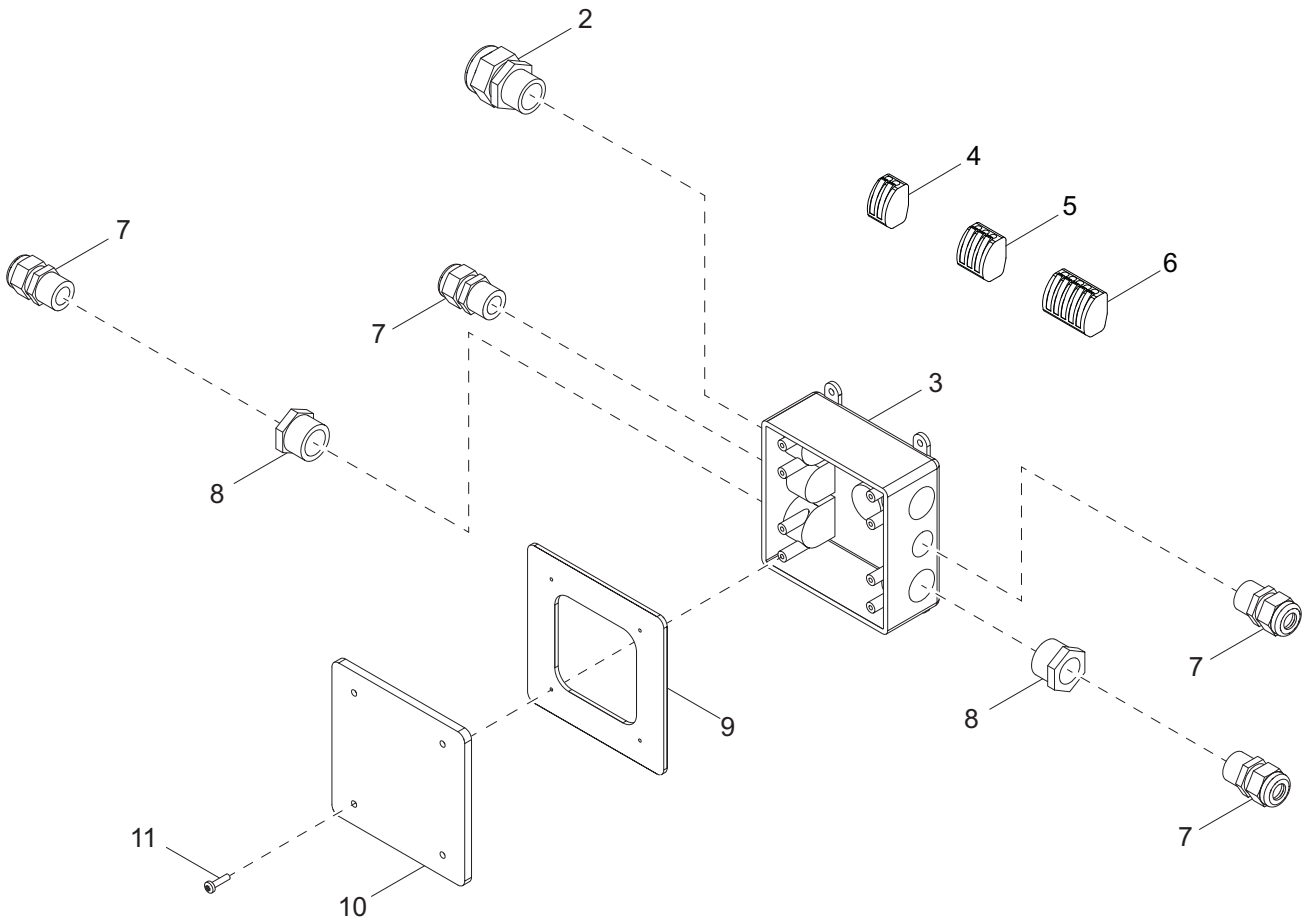
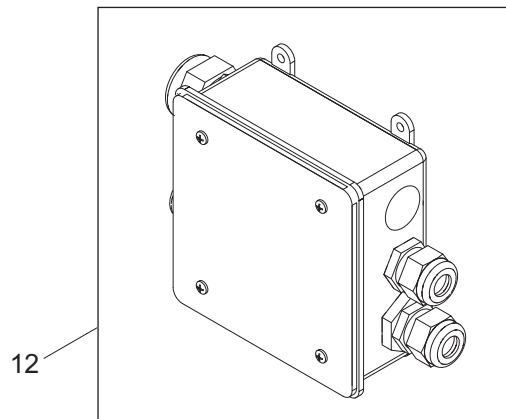
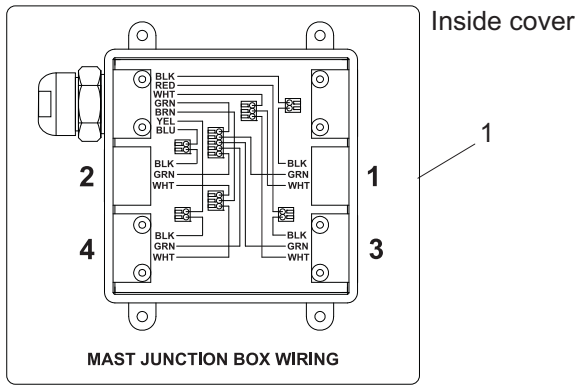
02583



## LIGHT ASSEMBLY - 1100 WATT

Item	Part No.	Qty	Description	Notes
1	13399	2	Screw, M4 x 18 pan Phillips	
2	10000022307	1	Spacer, .177 ID x .216 OD x .275 - nylon	
3	10000022348	2	Bracket, cable lock	
4	10000022306	1	Cable, lens lock	
5	60270	4	Nut, 8-32 hex nylock, G6	
6	60358	2	Nut, .375-16 hex nylock, G5	
7	60027	6	Washer, M10 flat	
8	10000022401	2	Stud, .375-24 x 2.00	
9	10000022356	1	Support, with cord	
10	13381	1	Socket, HID light	
11	10000022355	2	Gasket, silicone	
12	10000022370	1	Housing	
13	10000022392	1	Connector, weather tight	
14	10000022410	1	Bracket, trunnion HID light	
15	63357	2	Washer, .750 flat 2.0/.062 plastic	
16	60247	1	Washer, .750 flat 2.020/.130	
17	60584	1	Nut, .750-10 nylock, G5	
18	10000022383	2	Rivet, .134 diameter x .09 to .125 grip - SS	
19	10000022420	2	Rivet, .094 diameter x .09 to .240 grip - SS	
20	10000022354	1	Support, without cord	
21	10000022329	1	Bracket, non socket end	
22	13388	8	Screw, M5 x 12 slotted hex w/flange	
23	10000022390	1	Bracket, light holder	
24	13892	1	Support, bulb	
25	10000022357	1	Bracket, socket end	
26	10000022381	1	Bulb, metal halide 1100W	
27	10000022305	1	Gasket, lens	
28	10000022371	1	Lens, glass	
29	10000022400	2	Bracket, lens HSG secure	
30	10000022359	2	Screw, 8-32 x 1.500 pan Phillips - SS	
--	10000022353	4	Assembly, oval light fixture 1100W MH	

# MAST JUNCTION BOX ASSEMBLY



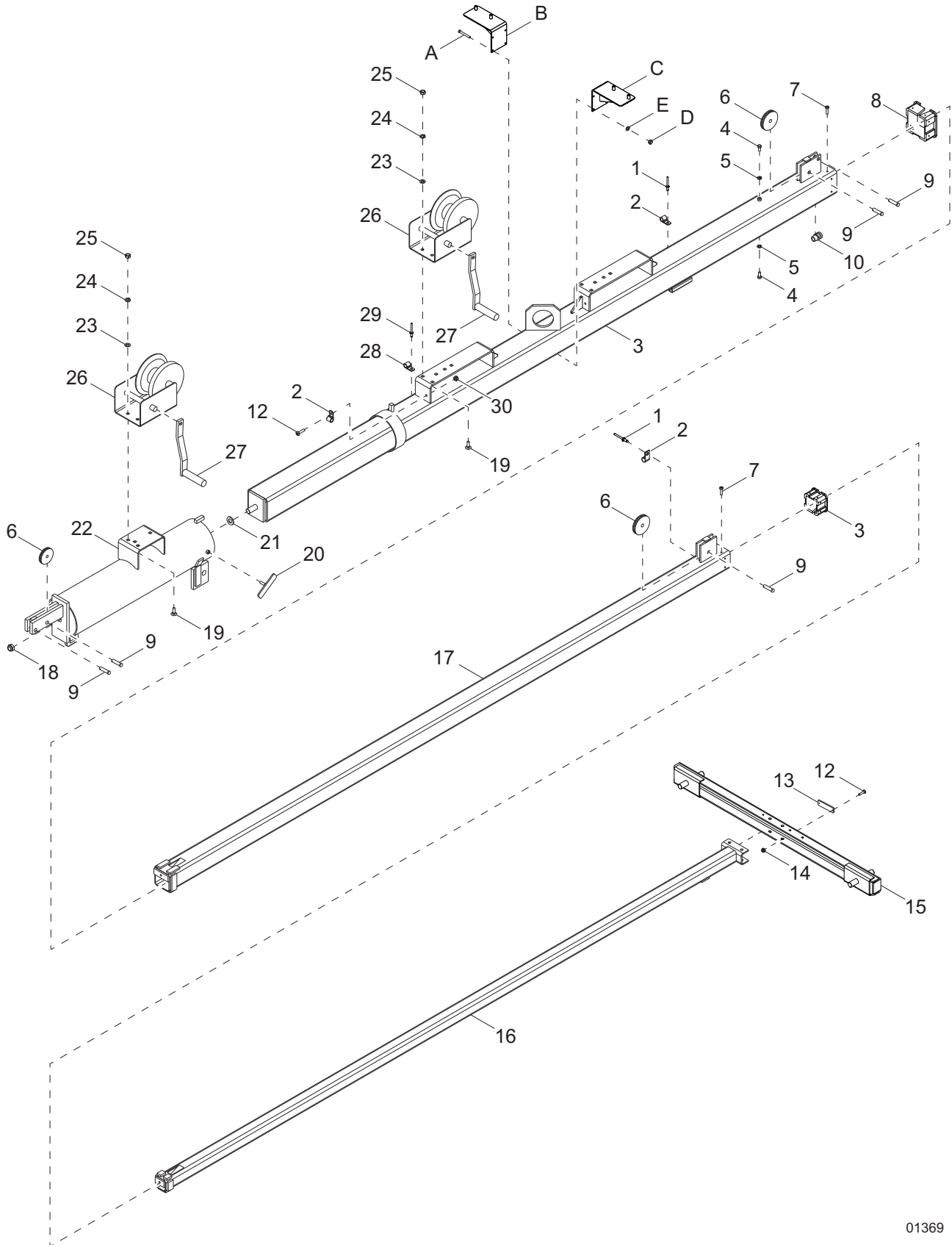
02687

## MAST JUNCTION BOX ASSEMBLYSRV

---

Item	Part No.	Qty	Description	Notes
1	37215	1	Decal, mast junction box wiring	
2	14656	1	Strain relief, .750NPT water tight	
3	12094	1	Box, junction	
4	66100	4	Connector, 2 position.	
5	66101	2	Connector, 3 position.	
6	66102	1	Connector, 5 position.	
7	15864	4	Strain relief, .500NPT water tight	
8	60755	2	Fitting, strt .750MNPT x .500FNPT, nylon	
9	13749SRV	1	Gasket, junction box - HFI 281000	
10	12109	1	Cover, box, 2-gang plastic	
11	60424	4	Screw, 6-32 x .750 pan Phillips, G2	
12	11789SRV	1	Assembly, mast junction box	

# MAST ASSEMBLY



01369

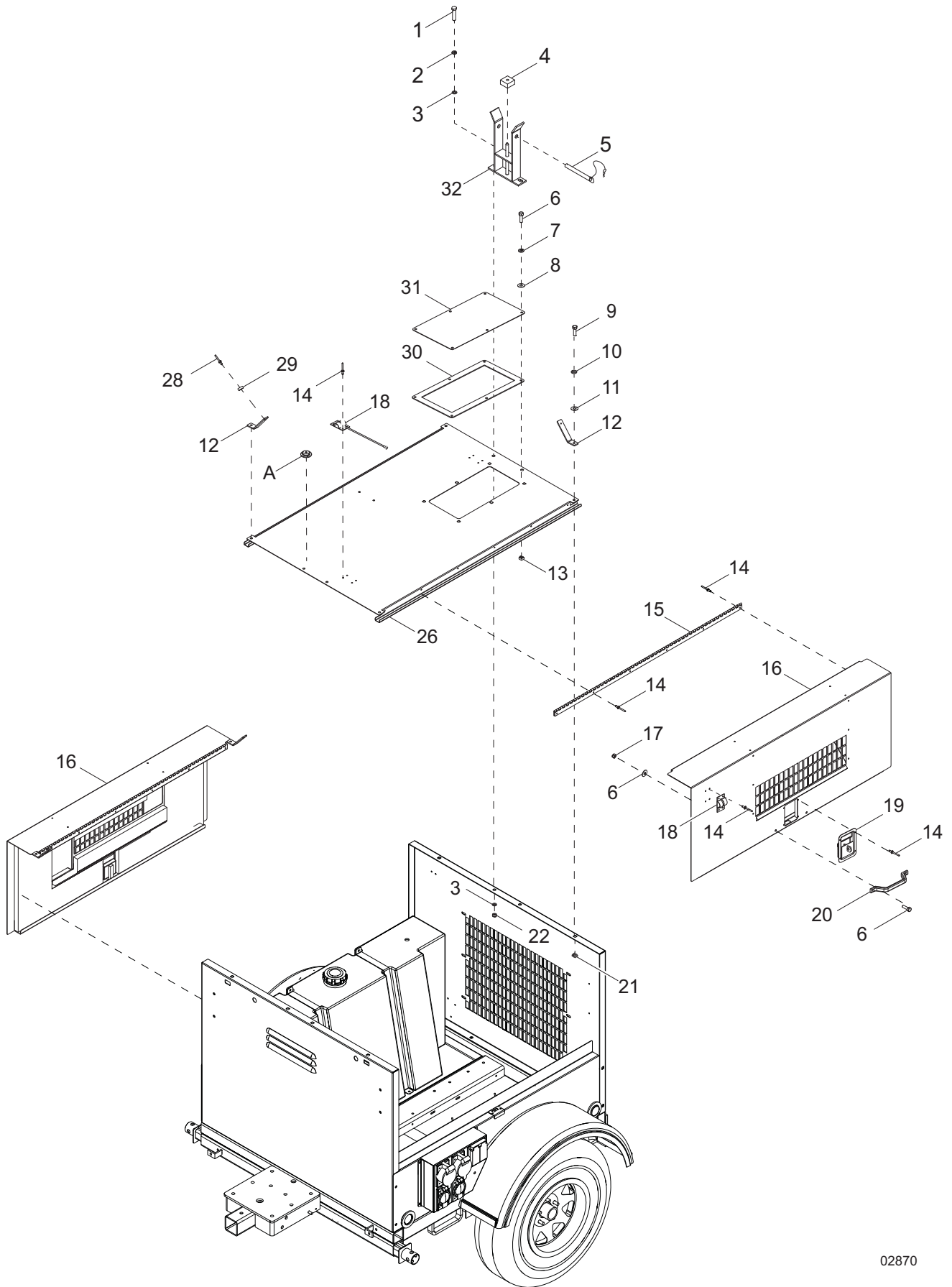
## MAST ASSEMBLY

Item	Part No.	Qty	Description	Notes
1	60268	2	Rivet, .188 diameter x .126 to .250 grip	
2	16143	3	Clamp, tubing - .500	
3	11933B	1	Weldment, mast - 4.0	
4	60168	2	Screw, .312 x 18 x .750 standard hex, G5	
5	60271	2	Washer, .312 split lock	
6	14262	3	Sheave, 3 in	
7	32569	15	Screw, 8-16 x .375 pan Phillips, SS	
8	13790	1	Shim - 4x4 tube	
9	63325	5	Pin, clevis - .500 diameter x 1.063	
10	14871	1	Strain relief, .500NPT, .500 cord	
11	13789	1	Shim - 3.0 x 3.0 tube	
12	60062	3	Screw, 10-32 x .750 pan Phillips, G2	
13	15829	1	Reflector - red	
14	60061	2	Nut, 10-32 nylock	
15	13527B	1	Weldment, mast crossbar	
16	16257B	1	Weldment, mast - 2.0	
17	11934B	1	Weldment, mast - 3.0	
18	60584	1	Nut, .750-10 nylock, G5	
19	60658	6	Screw, .375-16 x 1.0 carriage, G5	
20	11649Z	1	Weldment, T-bolt	
21	60247	1	Washer, .750 flat 2.020/.130	
22	11902B	1	Weldment, mast tube	
23	60698	6	Washer, .375 flat .875/.040 18-8, SS	
24	60206	6	Washer, .375 split lock	
25	60140	6	Nut, .375-16 hex, G5	
26	16600	2	Winch, manual - 1500 #	Nut included
27	15623	2	Winch handle - 9.0 in	
28	15627	1	Clamp, tubing - .625 heavy-duty	
29	60195	1	Rivet, .188 diameter x .375 to .500 grip, large flange	
30	60415	1	Nut, 10-32 nylock 18-8, SS	
--	15006	1	Cable - .188 in. x 27 ft. steel w/ball swedge	Attaches to item 3
--	14151	1	Cable - .188 in. x 11 ft. steel w/ball swedge	Attaches to item 17
--	14798	1	Cable - .188 in. x 16 ft. steel w/teardrop	Attaches to item 22
--	11954	1	Cord, coil	
--	15002	2	Clip, wire rope - .188, single saddle	
--	15003	1	Thimble, cable - .188	

*Mast Light Storage: (if equipped)*

A	60780	4	Screw, .375-16 x 5.5 standard hex, G5
B	13869B	1	Weldment, oval light storage - RH
C	13870B	1	Weldment, oval light storage - LH
D	60679	4	Nut, .375-16 hex, SS
E	60703	4	Washer, .375 split lock, SS

# ROOF AND DOORS TO UNIT

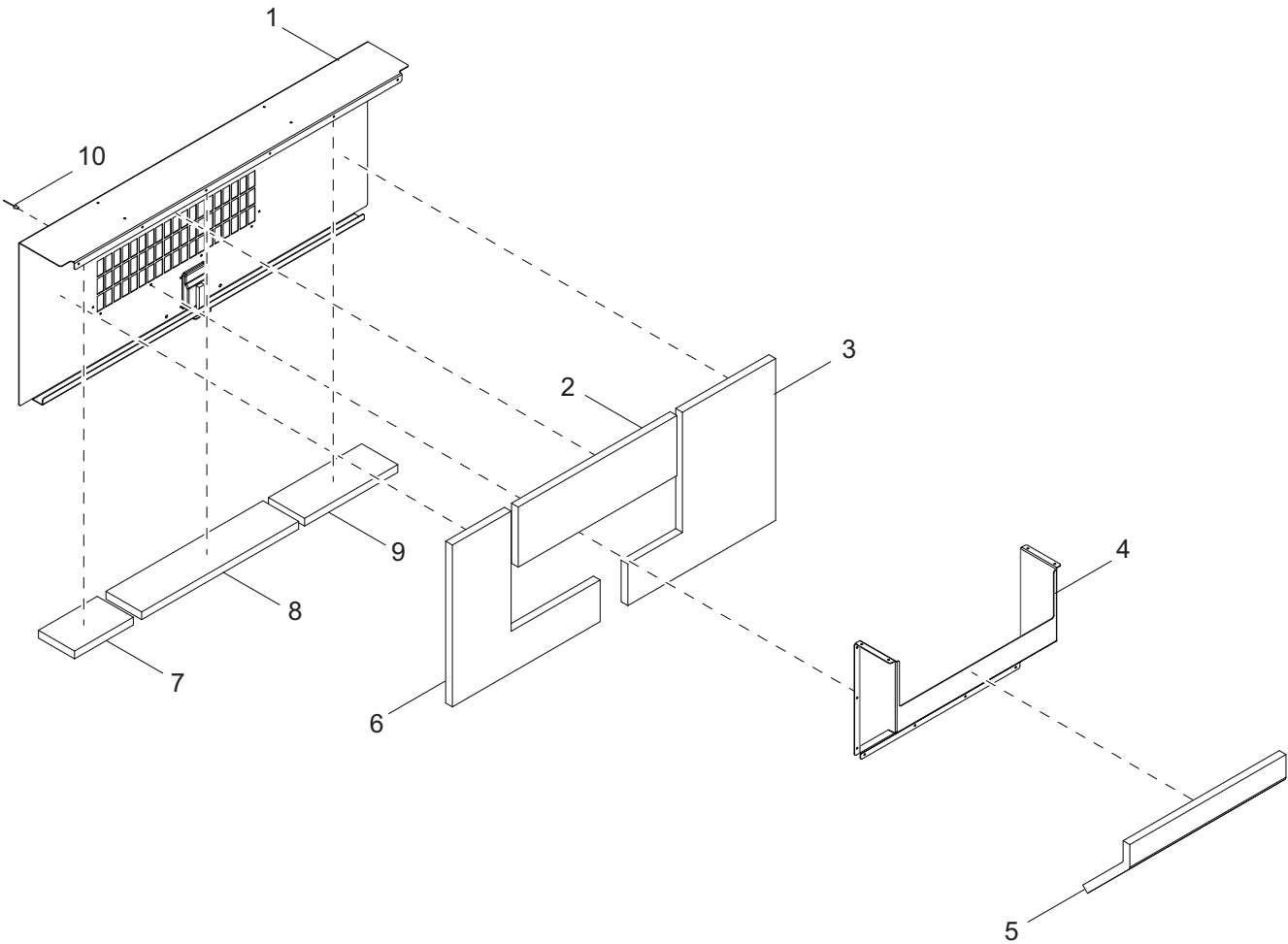


02870

## ROOF AND DOORS TO UNIT

Item	Part No.	Qty	Description	Notes
1	60683	2	Screw, .500-13 x 1.50 std hex, SS	
2	60702	2	Washer, .500 split lock, SS	
3	60699	4	Washer, .500 flat 1.070/.080, SS	
4	11935	1	Pad, rubber	
5	16099	1	Assembly, cradle pin	
6	60507	14	Screw, .312-18 x 1.0 std hex, SS	
7	60341	6	Washer, M8 split lock, SS	
8	60340	10	Washer, .312 flat .875/.040, SS	
9	60690	4	Screw, .375-16 x 1.0 std hex, SS	
10	60703	4	Washer, .375 split lock, SS	
11	60698	4	Washer, .375 flat .875/.040, SS	
12	62779B	4	Bracket, door stop	
13	15425	6	Nut, .312-18 cage	
14	60268	48	Rivet, .188 diameter x .126 to .250 grip	
15	16598	2	Hinge, door	
16	31365	2	Assembly, door	
17	60303	4	Nut, .312-18 nylock, G2	
18	62278	2	Latch, door	
19	15123	2	Latch, paddle w/7 lb spring	
20	26288	2	Handle, front access	
21	60657	4	Nut, .375-16 cage, G5	
22	60681	2	Nut, .500-13 hex, G2	
23	60680	5	Nut, .500-13-13 nylock, SS	
24	68569	1	Weldment, lift structure - vertical	
25	60705	1	Screw, .500-13 x 5.00 standard hex - SS	
26	35969W	1	Panel, roof	
27	13552	1	Bracket, door adjustment	
28	60863	4	Rivet, .156 diameter x .251 to .375 grip	
29	15215	4	Bumper, rubber	
30	12195	1	Gasket, back access panel	
31	25333W	1	Panel, back access	
32	12344ZN	1	Weldment, cradle	
<i>Level Eye (if equipped):</i>				
A	14433	1	Level, eye	

# DOOR INSULATION



01568

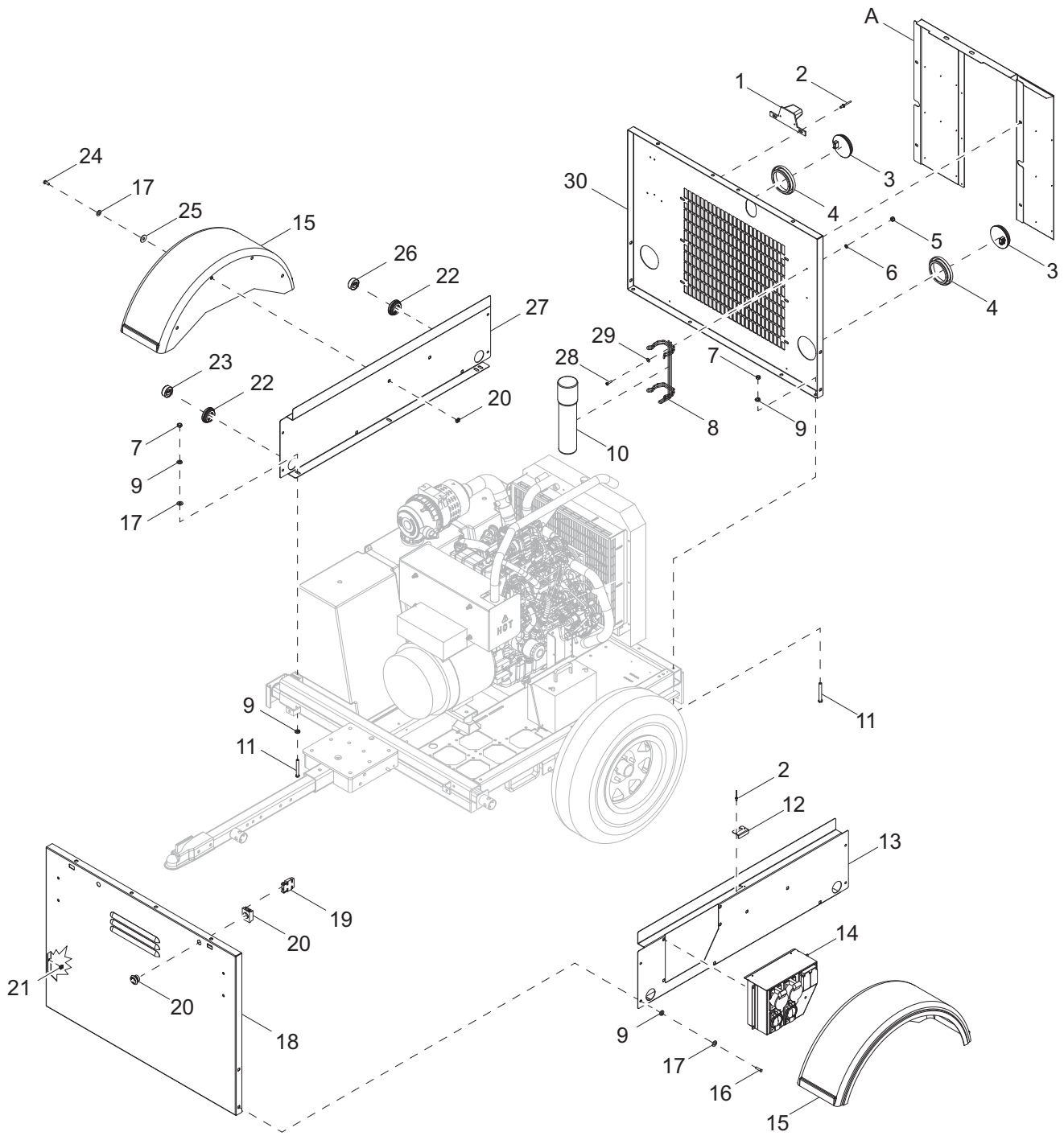


## DOOR INSULATION

---

Item	Part No.	Qty	Description	Notes
1	37122W	1	Panel, door	
2	37437	1	Foam, door - grate	
3	37433	1	Foam, door - right	
4	31379W	1	Duct, door	
5	37438	1	Foam, door - duct	
6	37432	1	Foam, door - left	
7	37434	1	Foam, door - top left	
8	37436	1	Foam, door - top middle	
9	37435	1	Foam, door - top right	
10	60268	14	Rivet, .188 diameter x .126 to .250 grip	

# FRONT, REAR AND SIDE PANELS TO UNIT

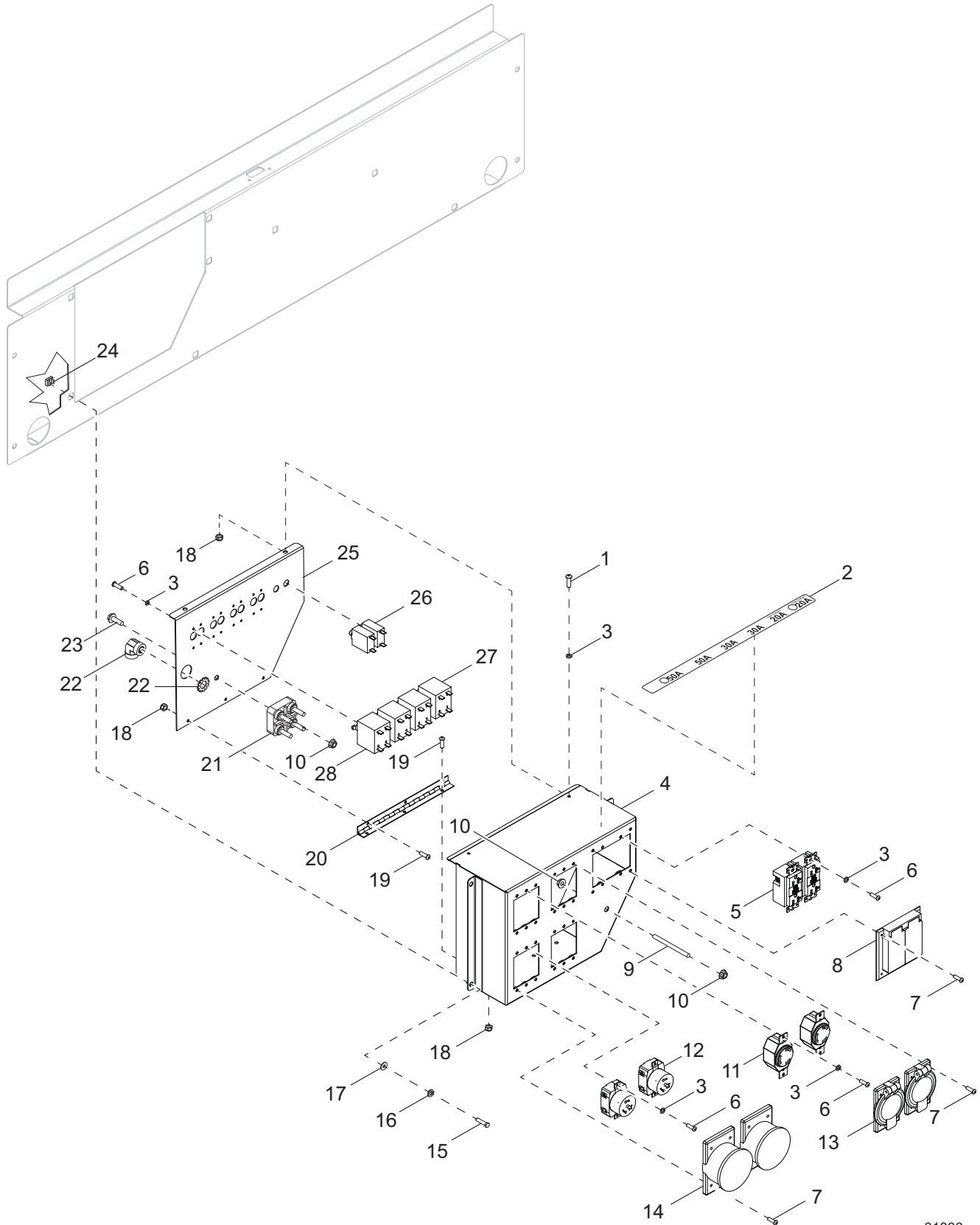


01569

## FRONT, REAR AND SIDE PANELS TO UNIT

Item	Part No.	Qty	Description	Notes
1	10223	1	Assembly, license plate holder	
2	60423	6	Rivet, .188 diameter x .250 to .375 grip	
3	66701	2	Light, rear tail/turn, round 4.0 in., no grommet - LED	
4	10221	2	Grommet, rear light, rubber 4.50 in	
5	60038	2	Nut, M5-.80 nylock	
6	60067	2	Washer, #10 flat .435/.060, SS	
7	60140	10	Nut, .375-16 std hex, G5	
8	11222	1	Bracket, manual holder	
9	60698	18	Washer, .375 flat .875/.040, SS	
10	11121	1	Manual holder tube	
11	60689	10	Screw, .375-16 x 4.0 std hex, SS	
12	13291	2	Plate, striker	
13	35957W	1	Panel, left side	
14	<a href="#">Page 22</a>	1	Assembly, receptacle box	
15	11381	2	Fender, plastic - 14 in	
16	60690	8	Screw, .375-16 x 1.0 std hex, SS	
17	60703	16	Washer, .375 split lock, SS	
18	37070W	1	Panel, front	
19	65472	1	Block, E-stop contactor - NC/NO	
20	65470	1	Switch, E-stop	
21	60657	32	Nut, .375-16 cage, G5	
22	66394	4	Grommet, sealed beam light	
23	66702	2	Light, clearance, 2.0 in., no grommet - amber LED	
24	60295	8	Screw, .375-16 x .750 std hex, SS	
25	60386	8	Washer, .375 flat .993/.064	
26	66703	2	Light, clearance, 2.0 in., no grommet - red LED	
27	35958W	1	Panel, right side	
28	60446	2	Screw, M5-.80 x 20 pan Phillips, SS	
29	60089	2	Washer, .265 fender 1.250/.060	
30	35971W	1	Panel, rear	
<i>Silent Pack: (if equipped)</i>				
A	35970W	1	Duct, rear	

# RECEPTACLE BOX ASSEMBLY

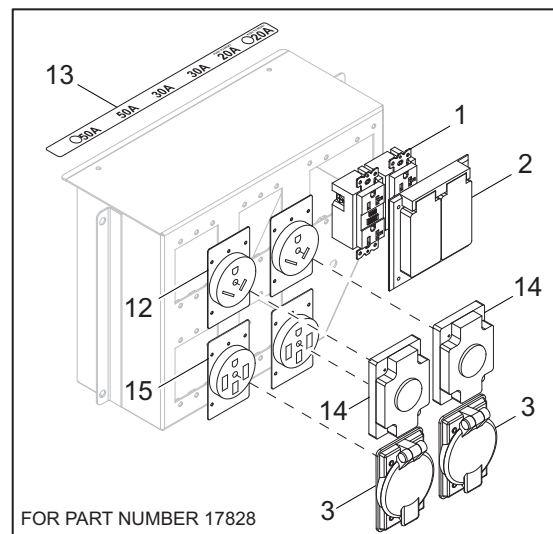
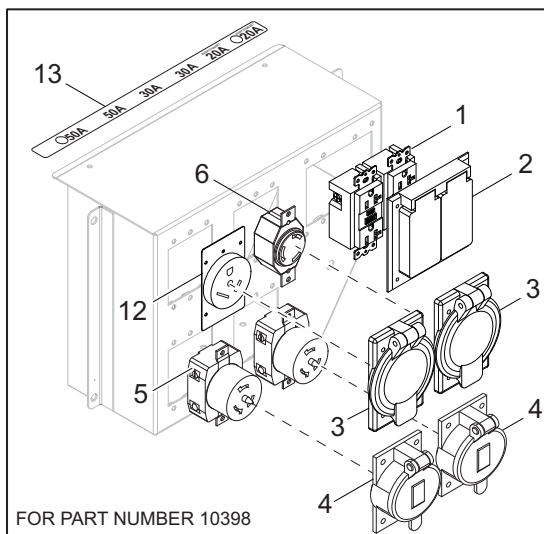
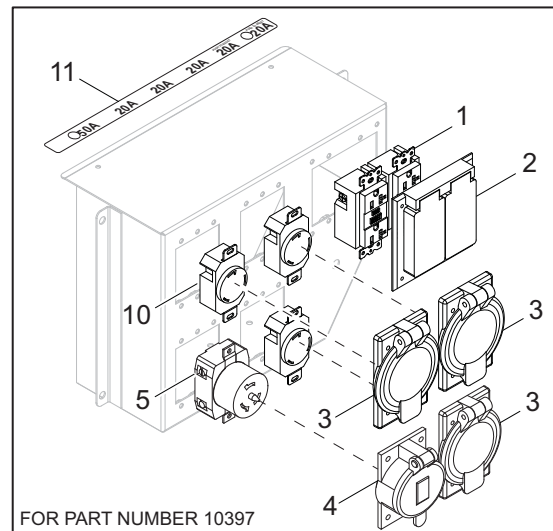
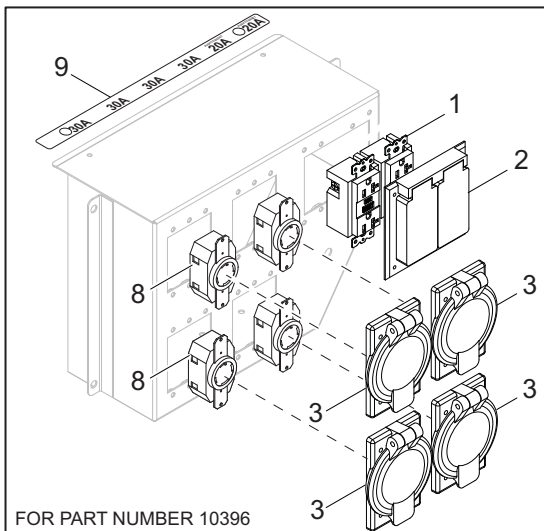
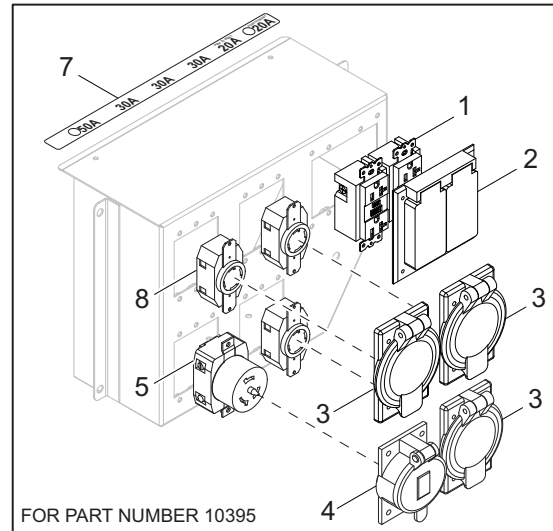
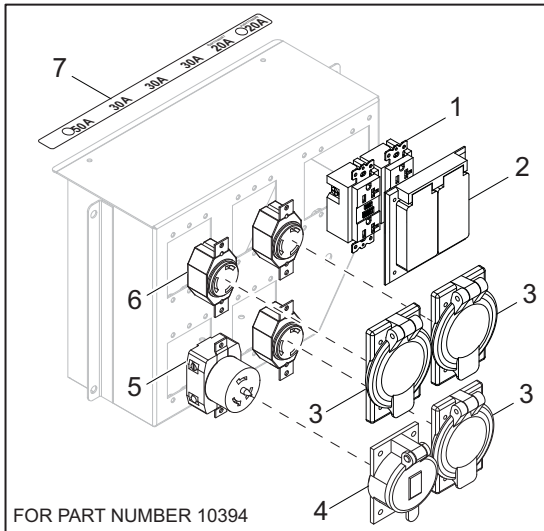


01836

## RECEPTACLE BOX ASSEMBLY

Item	Part No.	Qty	Description	Notes
1	60037	2	Screw, M5-.80 x 20 pan Phillips, G4.8	
2	10792	1	Decal, aux breakers - 50,50,30,30,20,20	
3	60058	30	Washer, #6 split lock	
4	10783W	1	Weldment, receptacle box	
5	14130	2	Receptacle, 120V/20A GFI (5-20R)	
6	60405	28	Screw, 6-32 x .250 pan Phillips, G2	
7	60770	20	Screw, M4-.70 x 20 pan Phillips, G4.8	
8	15849	1	Cover, receptacle - 20A GFCI dual	
9	18992	1	Stud, ground	
10	60020	3	Nut, M8-1.25 serrated flange, G8.8	
11	14137	2	Receptacle, 240V/30A twist (L6-30R)	
12	18089	2	Receptacle, 240V/50A twist-lock	
13	65460	2	Cover, receptacle - 20/30A twist-lock	
14	65467	2	Cover, receptacle - 50A twist (deep)	
15	60507	4	Screw, .312-18 x 1.0 std hex, SS	
16	60341	4	Washer, M8 split lock, SS	
17	60340	4	Washer, .312 flat .875/.040, SS	
18	60038	8	Nut, M5-.80 nylock	
19	60044	6	Screw, M5-.80 x 12 pan Phillips, G4.8	
20	10784	1	Hinge, piano - 9 in	
21	65519	1	Block, terminal - 4 pole stud type	
22	65535	1	Clamp, 90 degree 3/4 in	
23	60160	1	Screw, M8-1.25 x 30 serrated flange hex, G8.8	
24	15425	4	Nut, .312-18 cage	
25	10771W	1	Panel, outlet	
26	65849	2	Breaker, 20A, 120V, 1-pole, push button	
27	66097	2	Breaker, 30A, 250V, 2-pole, 1 lever	
28	65492	2	Breaker, 50A, 250V, 2-pole w/aux	
--	30782	1	Harness, control box to generator	
	10393	1	Assembly, receptacle box	Items 1-28

# RECEPTACLE PANEL OPTIONS

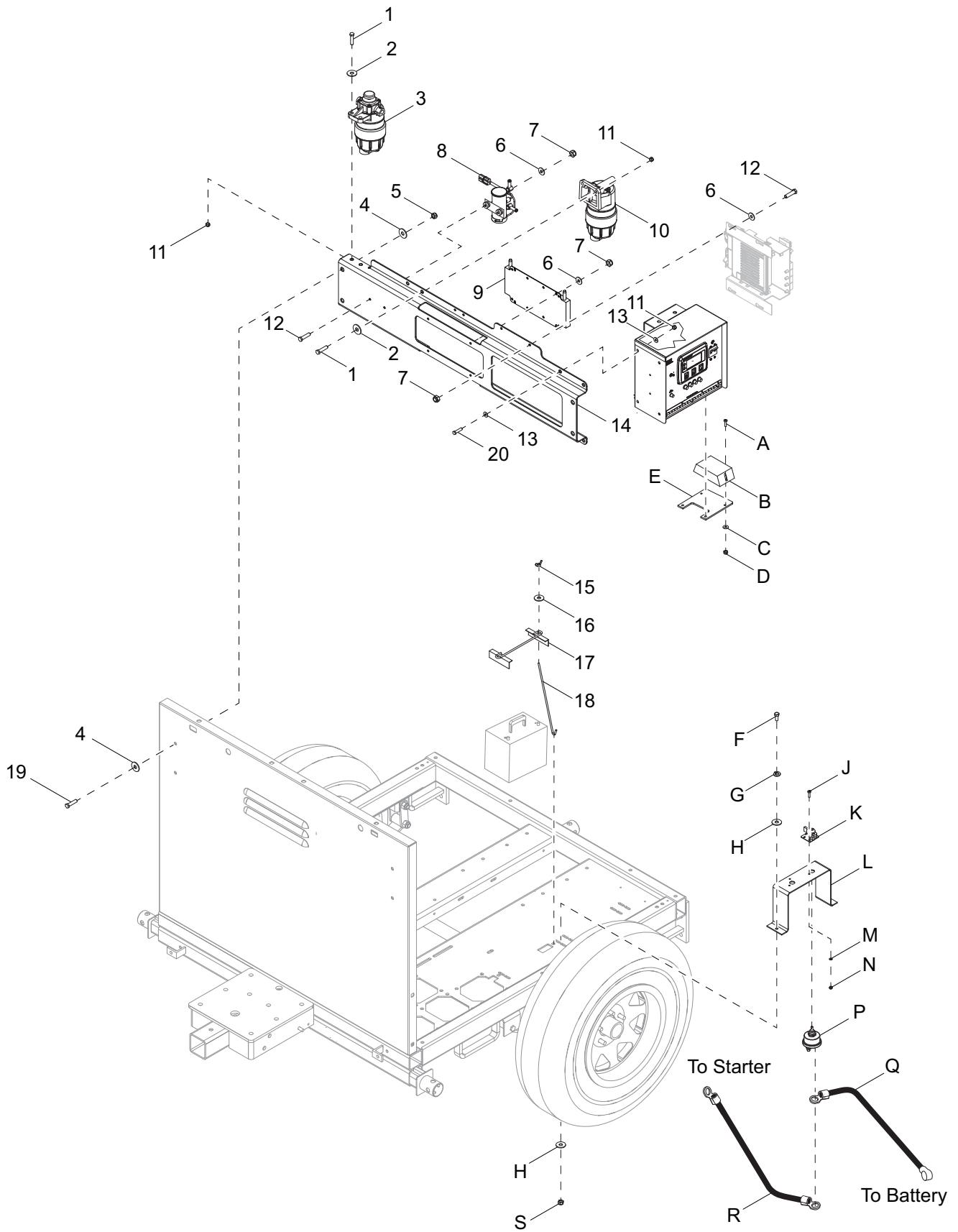


01759

## RECEPTACLE PANEL OPTIONS

Item	Part No.	Qty	Description	Notes
1	14130	12	Receptacle, 120V/20A GFI (5-20R)	
2	15849	6	Cover, receptacle - 20A GFCI dual	
3	65460	15	Cover, receptacle 20/30A twist-lock	
4	65467	5	Cover, receptacle - 50A twist (deep)	
5	18089	5	Receptacle, 240V/50A twist-lock	
6	14137	4	Receptacle, 240V/30A twist (L6-30R)	
7	17638	1	Decal, aux breakers - 50,30,30,30,20,20	
8	65488	7	Receptacle, 240V/30A twist (L14-30R)	
9	17639	1	Decal, aux breakers - 30,30,30,30,20,20	
10	15933	3	Receptacle, 240V/20A twist (L6-20R)	
11	17640	1	Decal, aux breakers - 50,20,20,20,20,20	
12	65489	3	Receptacle, 120V/30A (TT-30R)(RV)	
13	10792	1	Decal, aux breakers - 50,50,30,30,20,20	
14	66955	2	Cover, receptacle 20/30A twist-lock	
15	65815	2	Receptacle, 240V/50A RV (14-50R)	

# CONTROL BOX AND FUEL SYSTEM TO UNIT



01573



## CONTROL BOX AND FUEL SYSTEM TO UNIT

---

Item	Part No.	Qty	Description	Notes
1	60256	4	Screw, .312-18 x 1.50 std hex, G5	
2	60119	4	Washer, .312 flat .875/.070	
3	33763	1	Isuzu, fuel filter - final	
4	60698	8	Washer, .375 flat .875/.040, SS	
5	60792	4	Nut, .375-16 nylock, SS	
6	60243	8	Washer, .250 flat .735/.060	
7	60144	8	Nut, .250-20 nylock, G5	
8	33764	1	Isuzu, fuel pump	
9	35898	1	Cooler, fuel	
10	33762	1	Isuzu, fuel filter - primary	
11	60303	8	Nut, .312-18 nylock, G2	
12	60281	8	Screw, .250-20 x .750 std hex, G5	
13	60340	8	Washer, .312 flat .875/.040, SS	
14	37130B	1	Assembly, bracket, fuel pump/filter	
15	60090	2	Nut, .250-20 wing, G5	
16	60089	2	Washer, .265 fender 1.25/.060	
17	14682	1	Bracket, battery hold down	
18	60820	2	Bolt, J - .250-20 x 9.0	
19	62247	4	Screw, .375-16 x .625 std hex, SS	
20	62043	4	Screw, .312-18 x 2.25 std hex, SS	

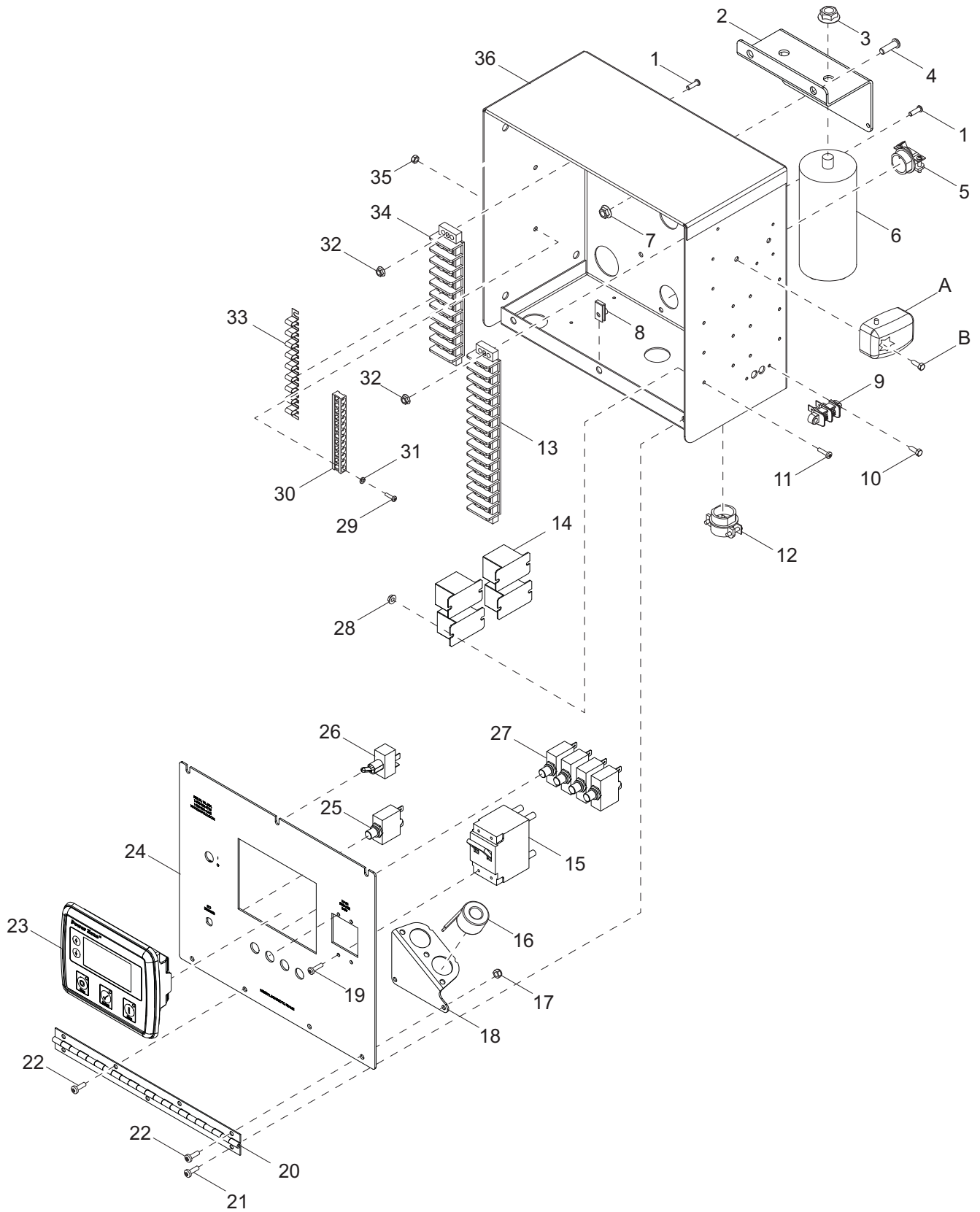
### *Battery Charger: (if equipped)*

A	60446	2	Screw, M5-.80 x 20 pan Phillips, SS
B	65326	1	Charger, battery - 2A, 3 stage, 1 output
C	60067	2	Washer, #10 flat .435/.060, SS
D	60038	2	Nut, M5-.80, nylock
E	12429B	1	Bracket, battery charger - 2 amp, 3 stage

### *Battery Disconnect: (if equipped)*

F	60028	2	Screw, .312-18 x 1.0 std hex, G5
G	60271	2	Washer, .312 split lock
H	60119	2	Washer, .312 flat .875/.070
J	60277	2	Screw, 10-32 x .500 pan Phillips, G2
K	65499	1	Assembly, switch lockout lever
L	13654B	1	Bracket, battery disconnect
M	60067	2	Washer, #10 flat .435/.060, SS
N	60061	2	Nut, 10-32 nylock
P	65498	1	Switch, disconnect
Q	25075	1	Cable, battery - 24 in, 4GA red w/boot, .375 lug
R	15076	1	Cable, battery - 46 in, 4GA red, .375 lug
S	60303	2	Nut, .312-18 nylock, G2

# CONTROL BOX ASSEMBLY



02871

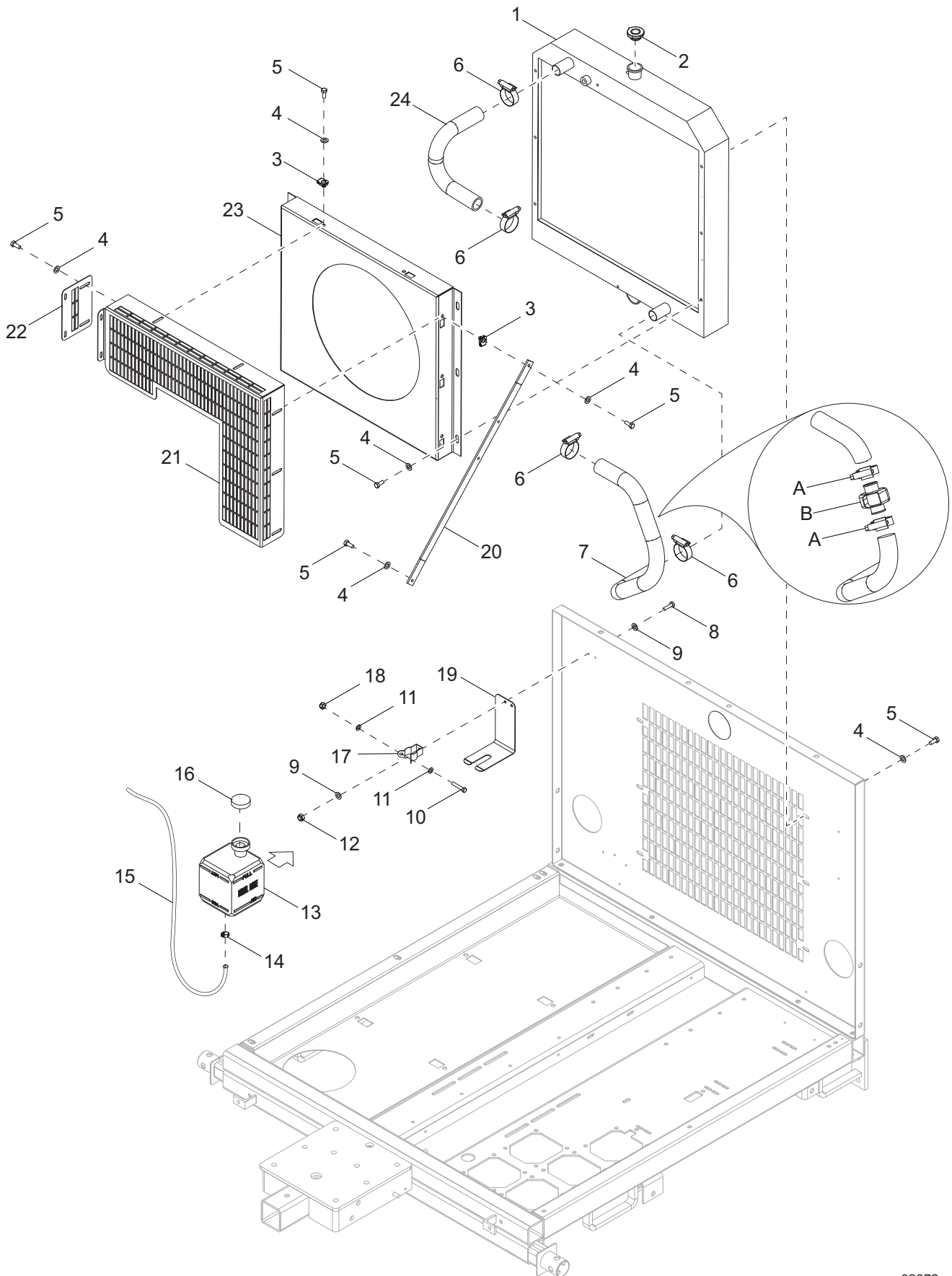
## CONTROL BOX ASSEMBLY

Item	Part No.	Qty	Description	Notes
1	60398	4	Screw, 10-32 x .500 pan Phillips, SS	
2	13343B	1	Bracket, dual cap mount - black	
3	60148	2	Nut, M12-1.75 serrated flange, G8.8	
4	60398	2	Screw, 10-32 x .500 pan Phillips, SS	
5	65490	1	Strain relief - 1.0 Romex w/nut	
6	10000024477	2	Capacitor, dual 24 $\mu$ F/24 $\mu$ F, 540 VAC	
7	61045	2	Nut, 10-32 serrated flange	
8	63105	6	Nut, 8-32 U-clip, G5	
9	68080	1	Block, terminal - 2 position, feed through	
10	60488	2	Screw, 8-32 x .750 pan Phillips, G2, self-tapping	
11	62187	8	Screw, 4-40 x .500 pan Phillips - SS	
12	14219	4	Strain relief - .750 Romex w/nut	
13	66013	1	Terminal block, 14 position, 30A, 600V, #8 screw	
14	29759	4	Relay, 12V coil, 120-240VAC	
15	65429	1	Breaker, 100A, 250V, 2 pole, stud terminal w/aux	
16	66255	2	Transformer, current - 100:5	
17	14231	2	Nut, 10-32 hex, G2	
18	37212B	1	Bracket, current transformer	
19	60405	4	Screw, 6-32 x .250 pan Phillips, G2	
20	13677	1	Hinge, continuous - 11 in	
21	60277	2	Screw, 10-32 x .500 pan Phillips, G2	
22	60694	2	Screw, 8-32 x .750 pan Phillips, SS	
23	70167	1	Controller, Deep Sea, L401-002-A3	
24	37090	1	Panel, control 20kW T4	
25	65850	1	Breaker, 10A, 240V, 1 pole - push button	
26	25077	1	Switch, toggle - SPST 20A VAC	
27	15568	4	Breaker, 15A, 120V, 1 pole - push button	
28	60758	8	Nut, 4-40 nylock, G2	
29	60062	3	Screw, 10-32 x .750 pan Phillips, G2	
30	14204	1	Kit, ground bar	
31	60252	3	Washer, #10 split lock	
32	61045	4	Nut, 10-32 serrated flange	
33	15125	9	Jumper	
34	14203	1	Block, terminal - 10 position, 30A, 600V, #8 screw	
35	60061	1	Nut, 10-32 nylock	
36	35886B	1	Box, control	
--	68175	1	Wire group, control box	
--	10000036670	1	Assembly, control box w/controller	

*Interior Cabinet Light: (if equipped)*

A	11947	1	Light, interior with switch
B	60364	4	Screw, 10-16 x .500 std hex, G2, self-drilling

# COOLING SYSTEM ASSEMBLY



02872

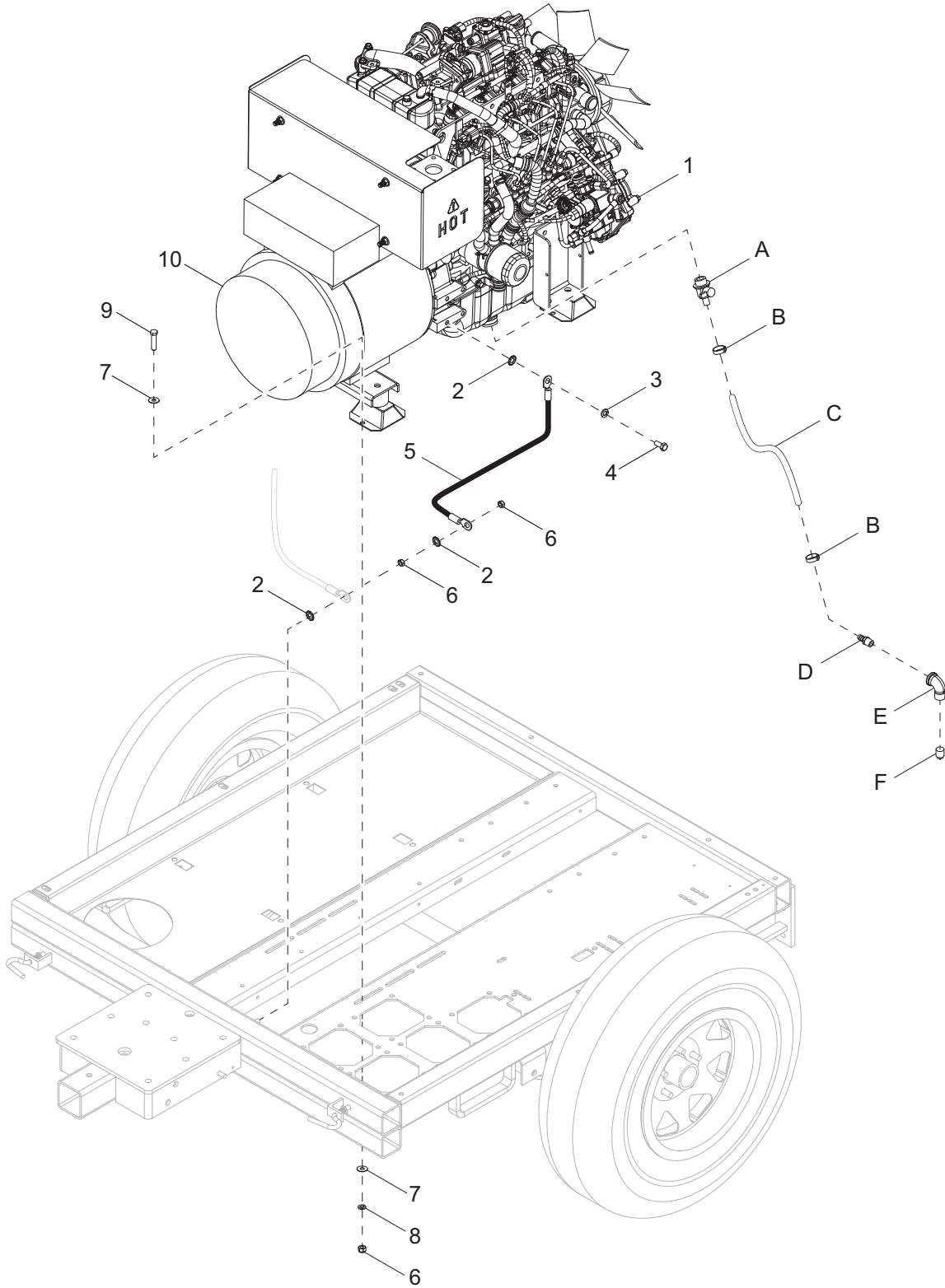
## COOLING SYSTEM ASSEMBLY

Item	Part No.	Qty	Description	Notes
1	13660	1	Radiator, 20kW	
2	19219	1	Cap, radiator	
3	62086	7	Nut, .312-18 U-clip - short-type	
4	60698	19	Washer, .375 flat .875/.040, SS	
5	60690	19	Screw, .375-16 x 1.0 std hex, SS	
6	15422	4	Clamp, hose - SAE 020 (.75-1.75)	
7	31567	1	Hose, radiator lower	
8	61180	2	Screw, 10-32 x .750 pan Phillips, SS	
9	60067	4	Washer, #10 flat .435/.060, SS	
10	60414	1	Screw, .250-20 x 1.50 std hex, G5	
11	60696	2	Washer, .250 flat .625/.050, SS	
12	60061	2	Nut, 10-32 nylock	
13	20287	1	Jug, overflow	
14	60777	1	Clamp, hose - .312 fuel hose crimp style	
15	16232	1	Hose, fuel - .312 ID, 50 psi, SAE 30R7 - 12 in	
16	19714	1	Cap, overflow jug	
17	19726	1	Clamp, overflow jug	
18	60144	1	Nut, .250-20 nylock, G5	
19	22419B	1	Bracket, overflow jug	
20	11596B	1	Strut, radiator support	
21	37082B	1	Guard, fan upper	
22	37083B	1	Guard, fan lower	
23	37086B	1	Shroud, fan	
24	12064	1	Hose, radiator upper	
--	14410	1	Assembly, overflow jug	Items 8-19

### *Lower Radiator Hose Heater: (if equipped)*

A	15422	2	Clamp, hose - SAE20 (.75-1.75)
B	65648	1	Heater, engine - low rad hose, 1.25 diameter

# ENGINE AND GENERATOR TO UNIT



01577

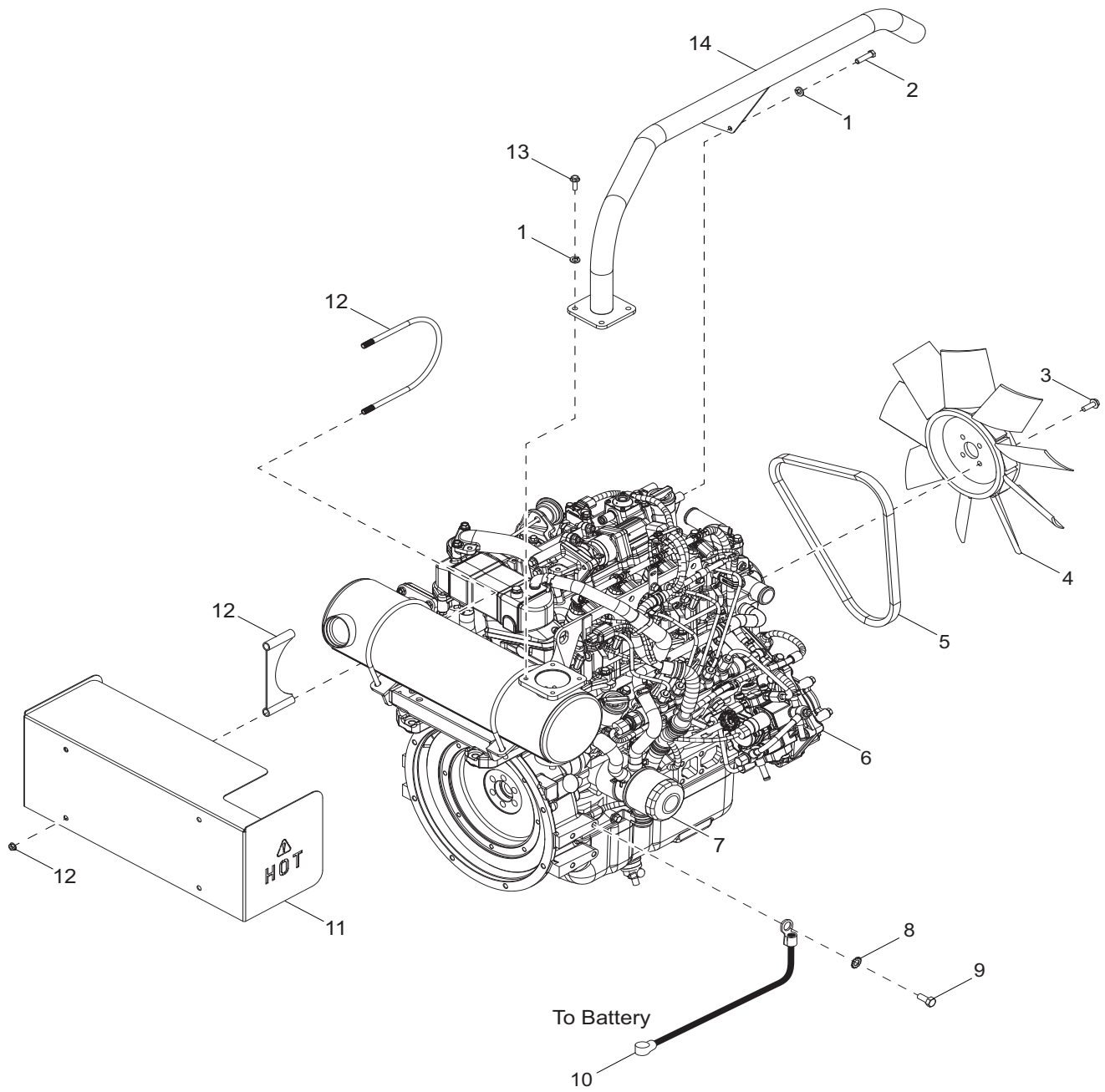
## ENGINE AND GENERATOR TO UNIT

Item	Part No.	Qty	Description	Notes
1	<a href="#">Page 34</a>	1	Assembly, engine	
2	60747	3	Washer, .375 internal star	
3	60026	1	Washer, M10 split lock	
4	60495	1	Screw, M10-1.25 x 16 std hex, G8.8	
5	16155	1	Assembly, wire - engine/chassis ground	
6	60140	10	Nut, .375-16 hex, G5	
7	60698	16	Washer, .375 flat .875/.040, SS	
8	60206	8	Washer, .375 split lock	
9	60690	8	Screw, .375-16 x 1.0 std hex, SS	
10	<a href="#">Page 38</a>	1	Assembly, generator	

### *Oil Drain Valve: (if equipped)*

A	31408	1	Valve, drain with nipple
B	60777	2	Clamp, hose - .312, crimp style
C	50051	6 ft	Hose, fuel - .375 ID, 50 psi
D	62076	1	Fitting, strt - .750MNPT x .625 barb
E	25110	1	Fitting, 90° - .750MNPT x .750FNPT
F	60498	1	Fitting, square plug - .750NPT

# ENGINE ASSEMBLY - LEFT SIDE



01821

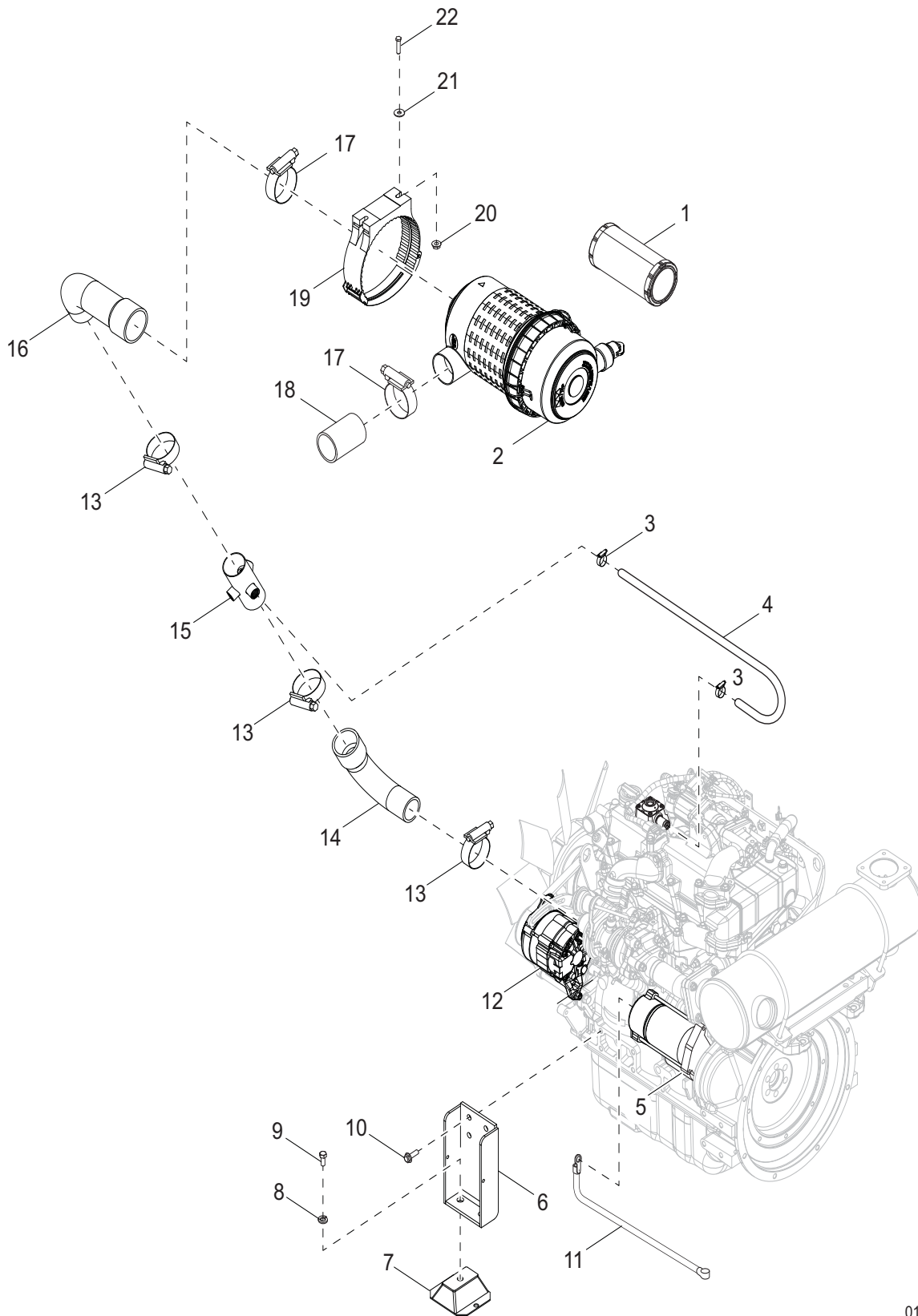


## ENGINE ASSEMBLY - LEFT SIDE

Item	Part No.	Qty	Description	Notes
1	60271	6	Washer, .312 split lock	
2	60410	2	Screw, M8-1.25 x 16 std hex, G8.8	
3	60024	4	Screw, M6-1.0 x 25 serrated flange hex	
4	19258	1	Fan, 15.75 in	
5	51099	1	Belt, fan	
6	37216	1	Engine, Isuzu - 4LE2T T4 40HP	
7	15183	1	Filter, oil	
8	60747	1	Washer, .375 internal star	
9	60495	1	Screw, M10-1.25 x 16 std hex, G8.8	
10	15073	1	Cable, battery - 24 in., 4GA black, .438 lug	
11	35976	1	Weldment, doc heat shield	
12	35925	2	Clamp, U-bolt	
13	60009	4	Screw, M8-1.25 x 25 serrated flange hex, G8.8	
14	35976	1	Weldment, exhaust pipe	
--	33766	1	Harness, engine - Isuzu	
--	34588	12.5 ft	Insulation, exhaust tape	Attaches to item 14

**Note:** Engine and generator parts used in all Generac Mobile Products equipment carry the Original Equipment Manufacturer (OEM) warranty unless otherwise stated. OEM warranty parts must be purchased through an OEM dealer. Please contact Generac Mobile Products with questions.

# ENGINE ASSEMBLY - RIGHT SIDE



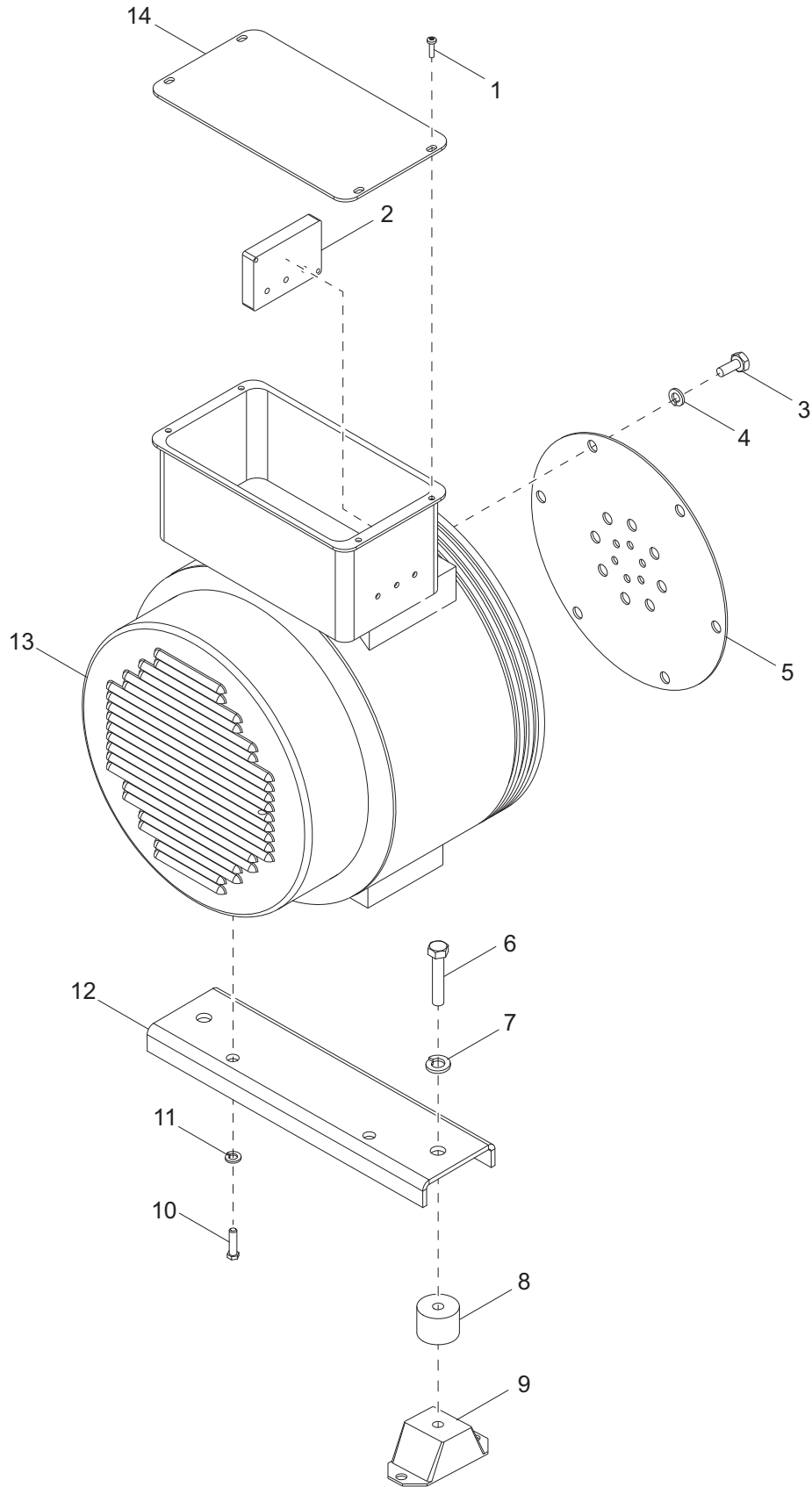
01810

## ENGINE ASSEMBLY - RIGHT SIDE

Item	Part No.	Qty	Description	Notes
1	35962	1	Element, air filter	
2	35959	1	Filter, air	
3	60365	2	Clamp, hose - SAE 010 (.56-1.06)	
4	50709	1.75 ft	Hose, fuel - .625 ID, 300 psi	
5	36662	1	Starter	
6	31564B	2	Weldment, engine mount	
7	11524	2	Isolator, rubber - 4.38 x 4.0 x 1.50	
8	60702	2	Washer, .500 split lock, SS	
9	60275	2	Screw, .500-13 x 1.0 std hex, G5	
10	60018	6	Screw, M10-1.50 x 20 serrated flange hex	
11	15074	1	Cable, battery - 38 in., 4GA red, .438 lug	
12	36661	1	Alternator	
13	60316	3	Clamp, hose - SAE 032 (1.56-2.50)	
14	35960	1	Hose, air filter	
15	38513BH	1	Weldment, air inlet fitting tube, .50-.50-.38 coup	
16	38421	1	Hose, air filter connection - 20 kW	
17	19336	2	Clamp, hose - SAE 044 (2.31-3.25)	
18	31571	1	Hose, air	
19	37480	1	Bracket, air filter	
20	60095	2	Nut, .312-18 serrated flange	
21	60340	2	Washer, .312 flat .875/.040	
22	60687	2	Screw, .312-18 x .75 std hex, SS	
--	68372	1	Harness, PCV hose heater, 26" insertion, 72" cord	
--	38467	1	Cord grip, 1/2 liquid tight	
--	38465	1	Spacer, Romex rubber	

**Note:** Engine and generator parts used in all Generac Mobile Products equipment carry the Original Equipment Manufacturer (OEM) warranty unless otherwise stated. OEM warranty parts must be purchased through an OEM dealer. Please contact Generac Mobile Products with questions.

# GENERATOR ASSEMBLY



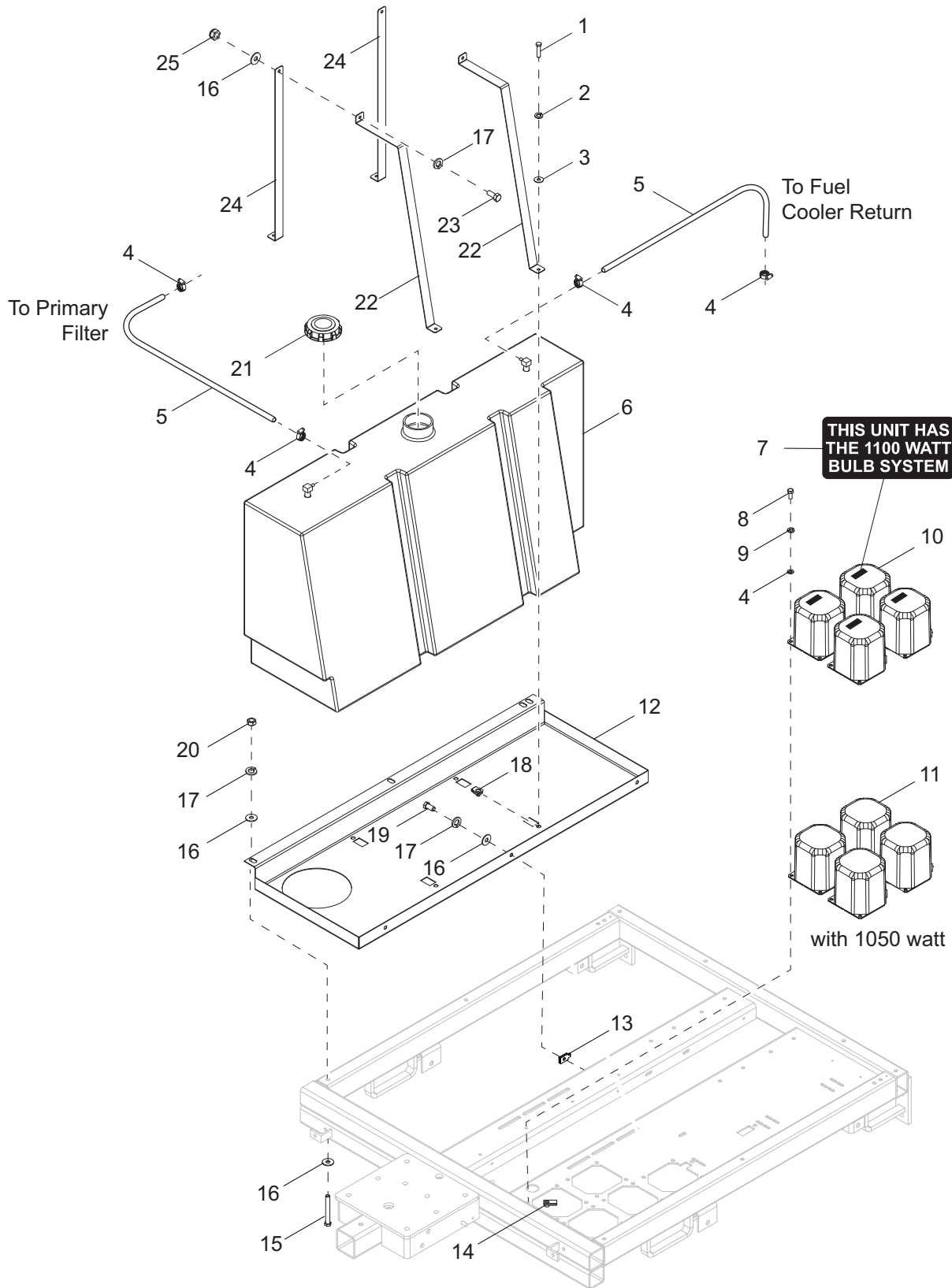
01580

## GENERATOR ASSEMBLY

Item	Part No.	Qty	Description	Notes
1	60398	4	Screw, 10-32 x 5.0 pan Phillips, SS	
2	18556	1	Regulator, voltage	
3	60495	6	Screw, M10-1.25 x 16 std hex, G8.8	
4	60026	6	Washer, M10 split lock	
5	11000	1	Plate, drive	
6	60484	2	Screw, .500-13 x 2.0 std hex, G5	
7	60702	2	Washer, .500 split lock, SS	
8	19339Z	2	Spacer, 2.0 x 1.5	
9	11524	2	Isolator, rubber - 4.38 x 4.0 x 1.50	
10	60690	2	Screw, .375-16 x 1.0 std hex, SS	
11	60206	2	Washer, .375 split lock	
12	11597B	1	Bracket, generator mounting	
13	11481	1	Generator, Marathon - 334CSA3028, 20 kW	
14	12736	1	Cover, generator	

**Note:** Engine and generator parts used in all Generac Mobile Products equipment carry the Original Equipment Manufacturer (OEM) warranty unless otherwise stated. OEM warranty parts must be purchased through an OEM dealer. Please contact Generac Mobile Products with questions.

# FUEL TANK ASSEMBLY

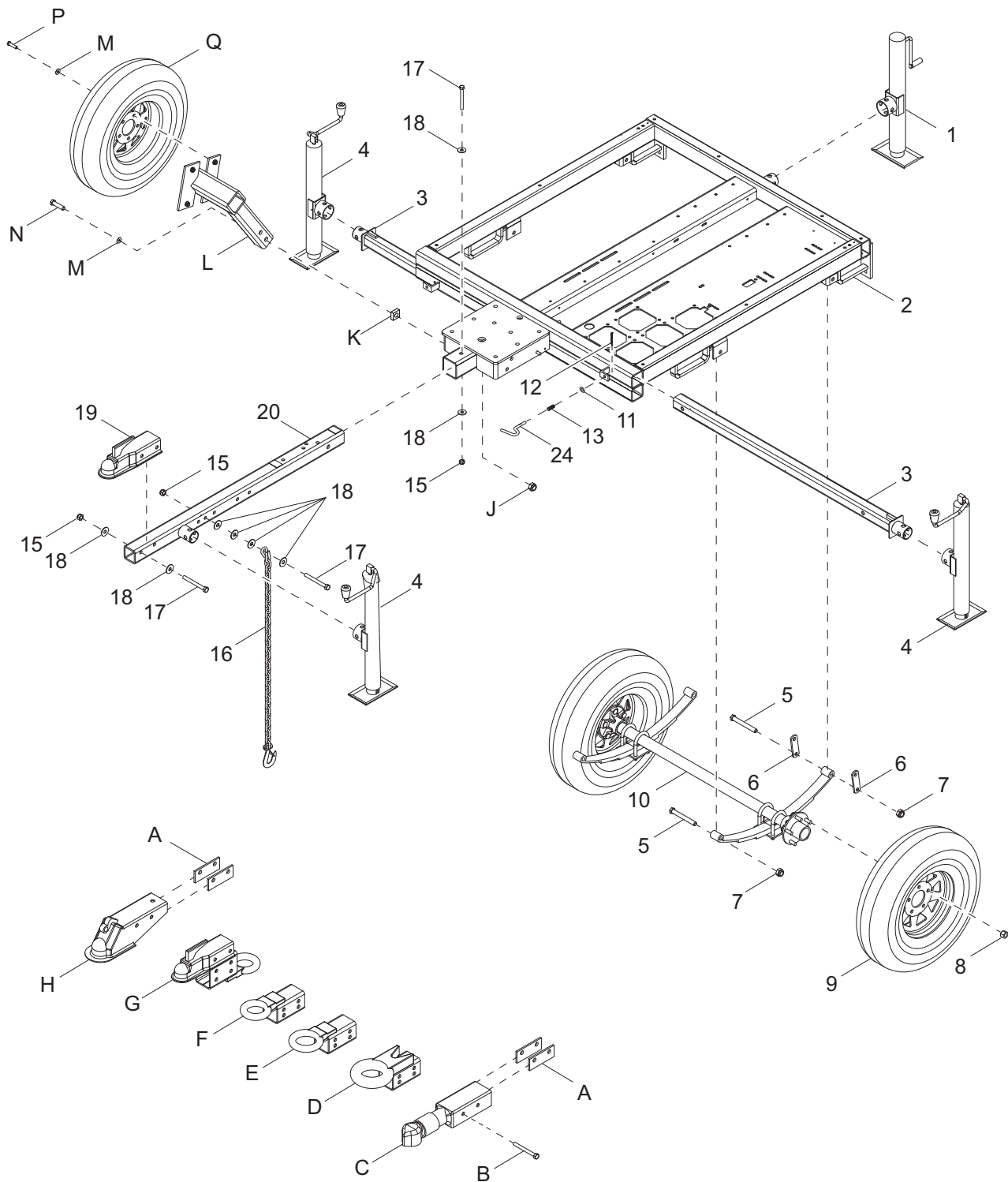


02873

## FUEL TANK ASSEMBLY

Item	Part No.	Qty	Description	Notes
1	60028	16	Screw, .312-18 x 1.0 std hex, G5	
2	60271	16	Washer, .312 split lock	
3	60119	16	Washer, .312 flat .875/.070	
4	60365	4	Clamp, hose - SAE 010 (.56-1.06)	
5	50051	5 ft	Hose, fuel - .375 ID, 50 psi, SAE 30R7	
6	31347	1	Tank, fuel - 50 gallon	
7	10000030392	4	Decal, 1100W bulb system	
8	60028	12	Screw, .312-18 x 1.0 standard hex, G5	
9	60271	12	Washer, .312 split lock	
10	10000036333	4	Assembly, transformer - can and base - 60Hz-MH	1100W only
11	10656SRV	4	Assembly, transformer - can and base - 60Hz-MH	1000-1050W only
12	37067B	1	Pan, fuel tank	
13	60727	3	Nut, .375-16 U-clip, short type	
14	62086	12	Nut, .312-18 u-clip - short type	
15	60689	3	Screw, .375-16 x 4.0 std hex, SS	
16	60698	11	Washer, .375 flat .875/.040, SS	
17	60703	6	Washer, .375 split lock, SS	
18	60505	4	Nut, .312-18 U-clip - long type	
19	60690	3	Screw, .375-16 x 1.0 std hex, SS	
20	60140	3	Nut, .375-16 hex, G5	
21	16326	1	Cap, fuel tank, 3.50 diameter - green w/tether	
22	37087B	2	Strap, fuel tank - large	
23	60334	2	Screw, .375-16 x 1.0, std hex, G5	
24	37088B	2	Strap, fuel tank - small	
25	60358	2	Nut, .375-16 nylock, G5	

# TRAILER ASSEMBLY



02874



## TRAILER ASSEMBLY

Item	Part No.	Qty	Description	Notes
1	11978	1	Jack, side wind - 2000 lb, tube mount	
2	13335B	1	Weldment, chassis	
3	69813	2	Weldment, outrigger	
4	13051	3	Jack, top wind - 2000 lb	
5	60503	6	Screw, shackle - .562-18 x 3.0 std hex, G5	
6	19637	4	Plate, shackle bracket	
7	60504	6	Nut, .562-18 lock hex, G5	
8	60096	10	Nut, .500-20 lug, G5	
9	15540	2	Wheel, ST205/75R15, 1598 lb	
10	<i>Page 44</i>	1	Assembly, axle	
11	35275	2	Washer, .375 flat .416 x .820 x .057	
12	35274	2	Cotter pin, 5/64 x 1.0	
13	35273	2	Spring, compression - .562 x 1.50	
14	35272	2	Pin, plunger, .375	
15	62221	11	Nut, .500-13 nylock, G5	
16	23367	2	Chain, safety	
17	50215	9	Screw, .500-13 x 4.0 std hex, G5	
18	60416	28	Washer, .500 flat 1.375/.090	
19	16830	1	Coupler, 2.00 ball/2.50 channel	
20	12420B	1	Weldment, removable tongue	

*Hitches: (if equipped)*

A	12155B	2	Spacer, coupler
B	60376	2	Screw, .500-13 x 4.50 std hex, G5
C	13003B	1	Coupler, 2.0 ball/3.0 channel
D	11672B	1	Weldment, hitch - 3.0 x 1.625 ring/2.50 tube
E	16835B	1	Weldment, lunette ring - 3.0 x 1.0 ring/2.50 tongue
F	16999B	1	Weldment, lunette ring - 2.5 x 1.0 ring/2.50 tongue
G	16741ZC	1	Weldment, combo hitch - 2.50 tongue
H	12229	1	Coupler, 2.31 ball/3.0 channel

*Spare Tire Carrier: (if equipped)*

J	62221	2	Nut, .500-13 nylock, G5
K	12081	2	Spacer, racking
L	12235B	1	Weldment, spare tire holder
M	60700	4	Washer, .500 flat 1.250/.060, SS
N	60388	2	Screw, .500-13 x 1.50 std hex, G5
P	15540	1	Wheel, ST205/75R15, 1598 lb
Q	60275	2	Screw, .500-13 x 1.0 std hex, G5

*Trailer Plug Adapters: (if equipped)*

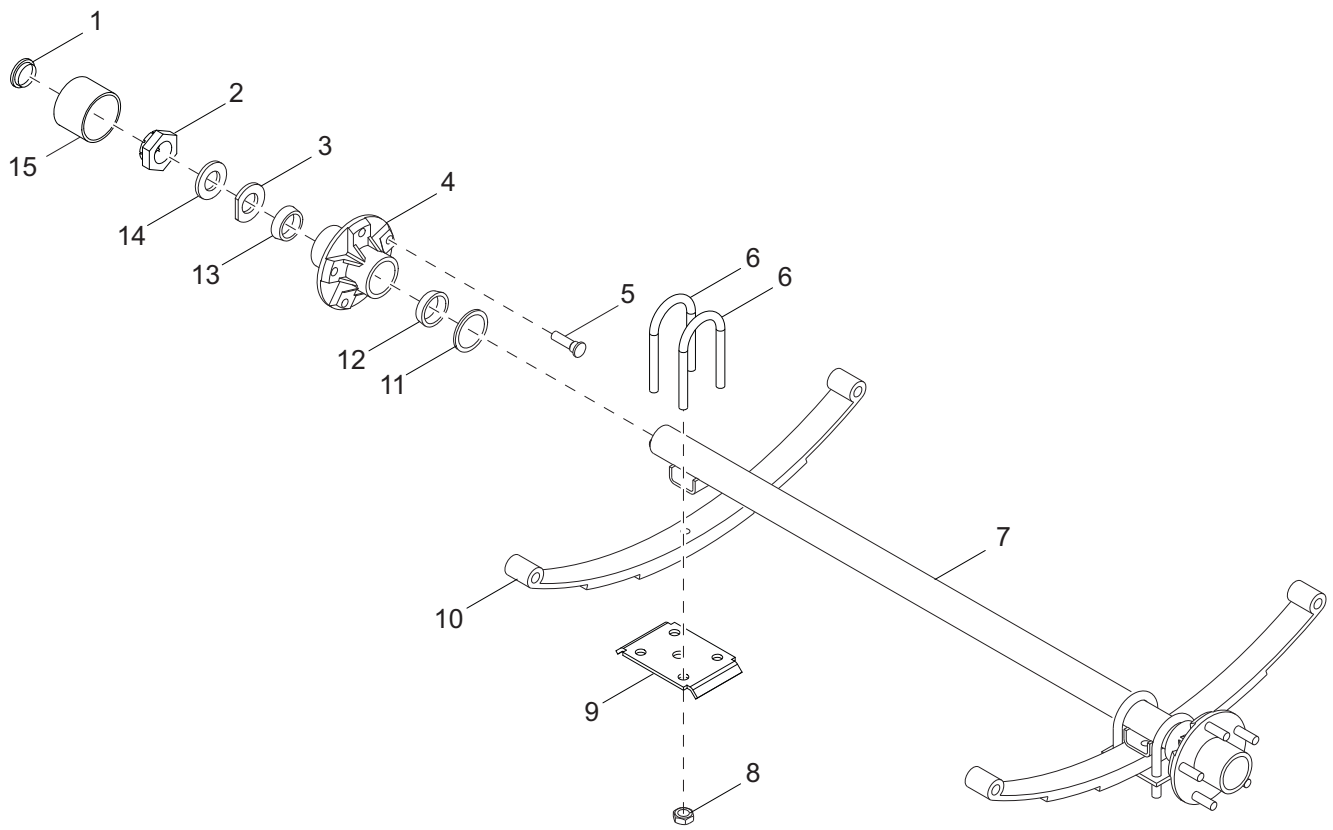
--	65463	1	Adapter, trailer wiring - flat 4 pin to round 6 pin
--	65464	1	Adapter, trailer wiring - flat 4 pin to round 7 pin
--	65465	1	Adapter, trailer wiring - flat 4 pin to round 7 blade

*Containment: (if equipped)*

--	10496B	1	Weldment, It chassis - 60 gal containment
----	--------	---	---

# AXLE ASSEMBLY

---



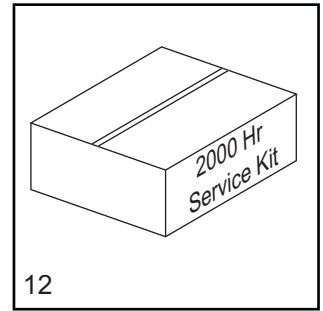
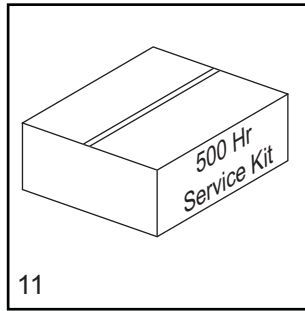
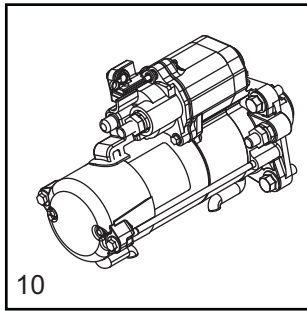
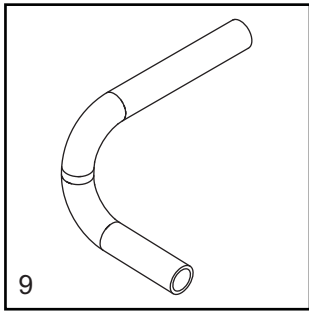
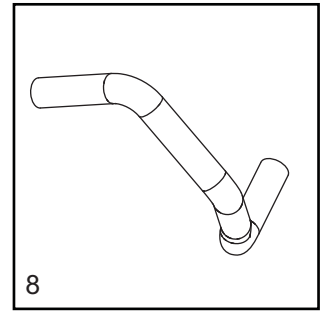
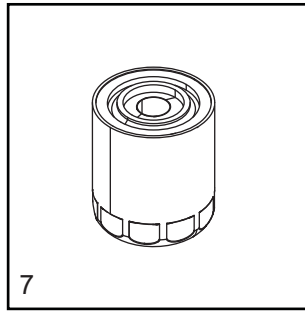
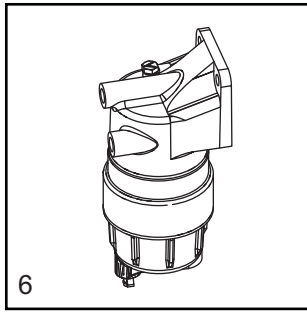
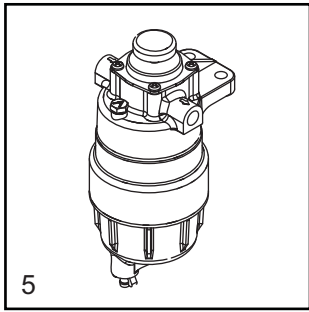
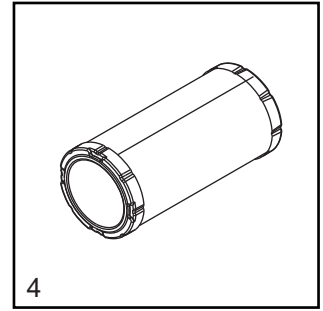
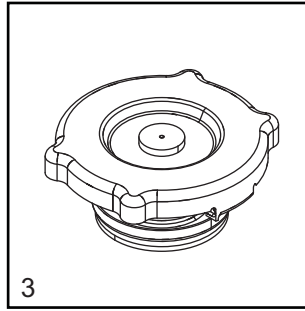
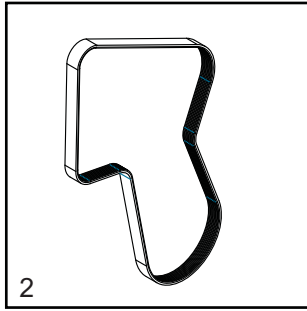
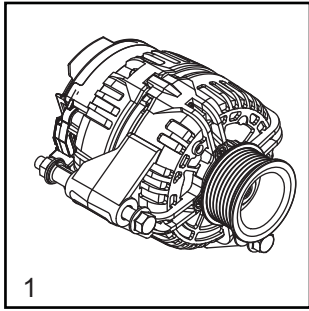
01792

## AXLE ASSEMBLY

---

Item	Part No.	Qty	Description	Notes
1	70054	2	Rubber plug	
2	12308	2	Spindle nut	
3	12309	2	D-washer	
4	11276	2	Hub w/races	
5	60674	10	Stud, wheel	
6	11277	4	U-bolt	
7	13131	1	Axle, 3000 lb	
8	11279	8	Axle nut	
9	11278	2	Tie plate	
10	11280	2	Axle leaf spring	
11	70056	2	Bearing seal	
12	11511	2	Roller bearing	
13	70055	2	Bearing L44643	
14	12310	2	Tang washer	
15	70053	2	Dust cap	

# RECOMMENDED SPARE PARTS - ENGINE AND SERVICE KITS



## RECOMMENDED SPARE PARTS - ENGINE AND SERVICE KITS

---

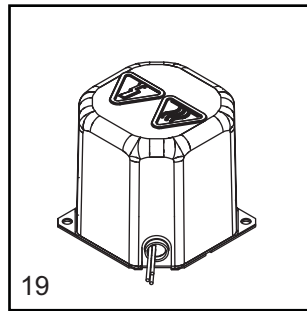
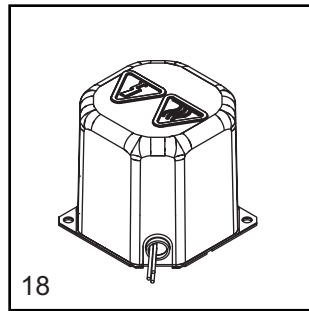
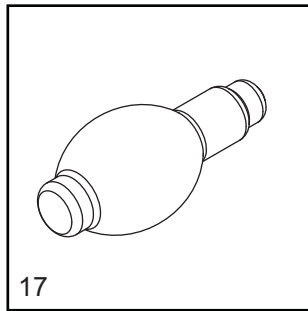
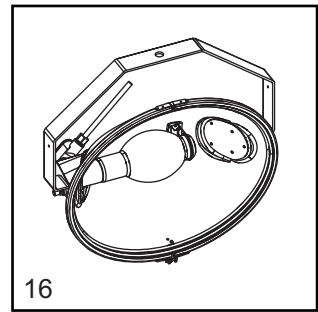
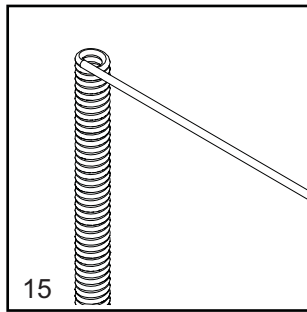
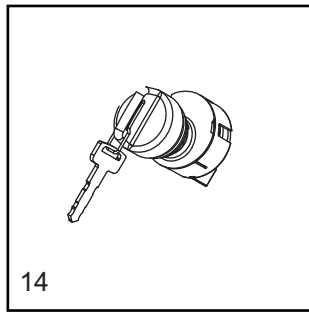
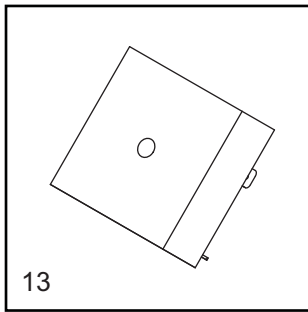
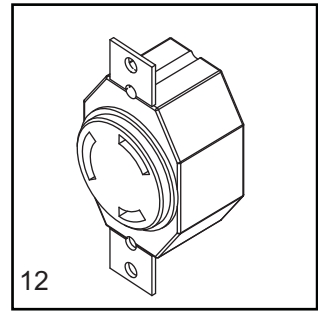
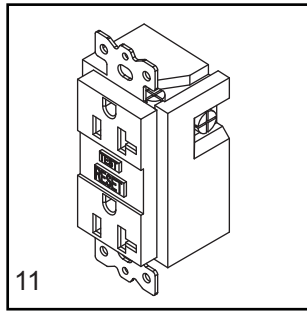
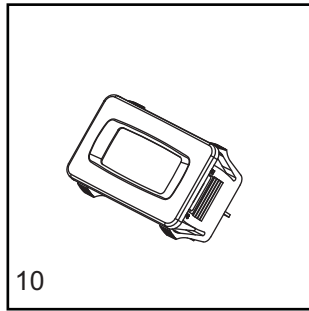
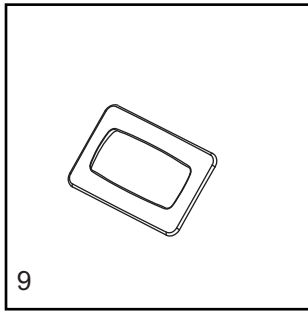
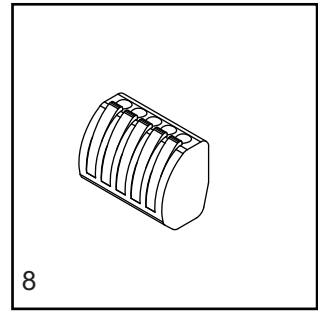
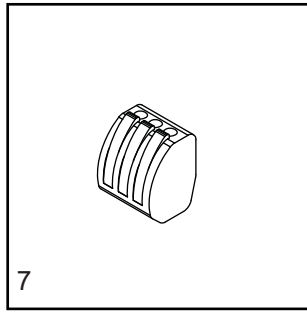
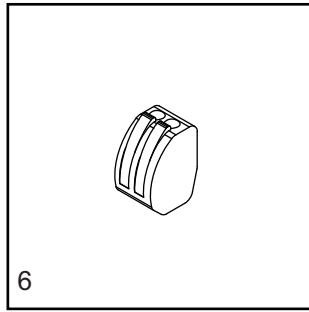
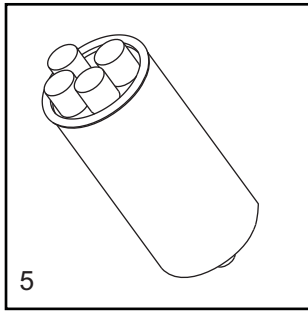
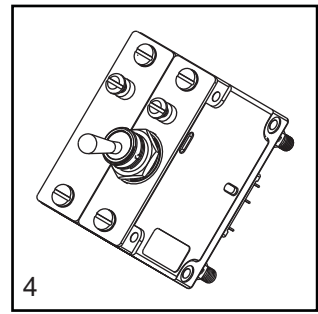
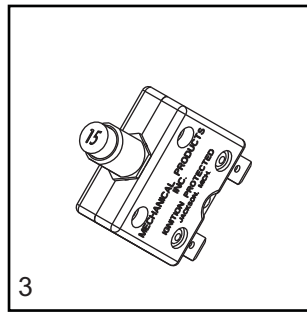
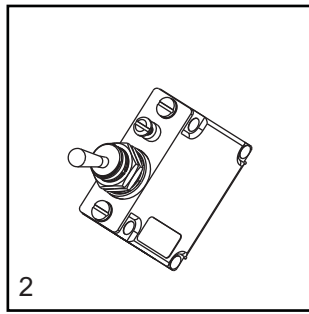
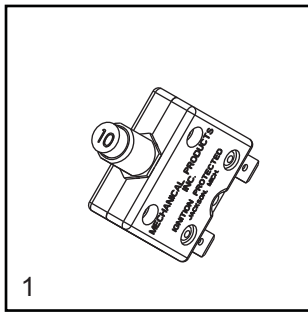
### ENGINE

1. Alternator .....	36661
2. Belt, fan .....	51099
3. Cap, radiator .....	19219
4. Filter, air - element .....	35962
5. Filter, fuel - primary .....	36905
6. Filter, fuel - final .....	36904
7. Filter, oil .....	15183
8. Fan, engine .....	19258
8. Hose, radiator - upper .....	12064
9. Hose, radiator - lower .....	31567
10. Starter .....	36662

### SERVICE KITS

11. 500 hour kit .....	SK324
Includes: Air Filter Element 35962, Primary Fuel Filter 36905, Final Fuel Filter 36904, and Oil Filter 15183	
12. 2000 hour kit .....	SK325
Includes: Engine Belt 51099 (2), Air Filter Element 35962 (4), Primary Fuel Element 36905 (4), Final Fuel Filter 36904 (4), and Oil Filter 15183 (4)	

# RECOMMENDED SPARE PARTS - ELECTRICAL



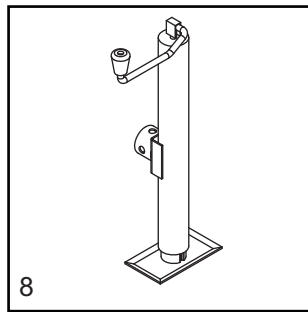
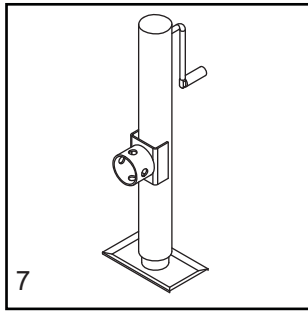
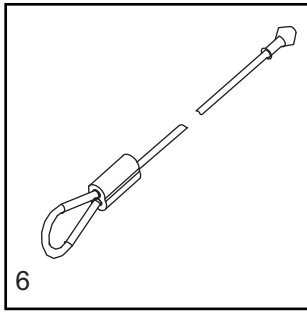
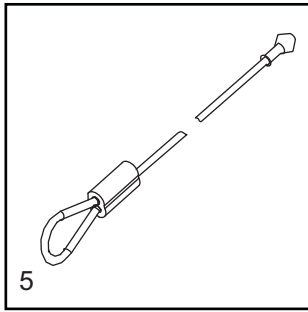
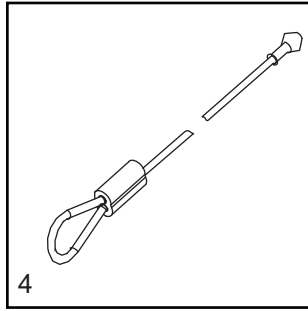
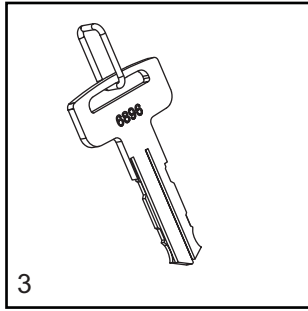
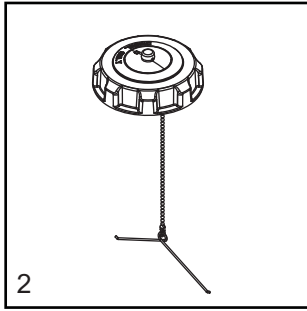
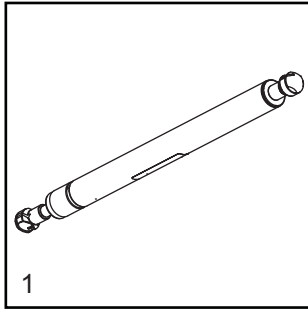
## RECOMMENDED SPARE PARTS - ELECTRICAL

---

### ELECTRICAL

1. Breaker, 10A, 240V, 1 pole, push button .....	36937
2. Switch, light 15A .....	36880
3. Breaker, 15A, 120V, 1 pole, push button, 8kW .....	36935
4. Breaker, 30A, 250A, 2 pole, 6kW .....	36975
5. Capacitor, 24 $\mu$ F/24 $\mu$ F, 5% 540VAC dual - 1100W .....	10000024477
6. Connector, 2 position (qty - 4) .....	66100
7. Connector, 3 position (qty - 2) .....	66101
8. Connector, 5 position (qty - 1) .....	66102
9. Gasket, hour meter .....	36944
10. Gauge, hour meter .....	36886
11. Receptacle, 120V/20A GFI .....	14130
12. Receptacle, 240V/30A twist .....	14137
13. Relay, 10A SPDT, 15 second time delay .....	14201
14. Switch, key .....	15195SRV
15. Coil cord .....	39650
16. Assembly, light fixture, 1100W MH .....	10000022353
Assembly, light fixture, 1050W MH .....	10000008620
17. Bulb, 1100W MH .....	10000022381
18. Assembly, transformer can/base 60Hz MH 5.5 (1100W) .....	10000036333
19. Assembly, transformer can/base 60Hz MH 5.5 (1000-1050W) .....	10656SRV

# RECOMMENDED SPARE PARTS - MISC





**RECOMMENDED SPARE PARTS - MISC**

---

**ENCLOSURE**

- 1. Gas shock..... 35137
- 2. Cap, fuel tank with lanyard ..... 16326
- 3. Key (set of two)..... 15309

**MAST**

- 4. Cable, 69.25 in ..... 15006
- 5. Cable, 69.75 in ..... 14151
- 6. Cable, 67.875 in ..... 14798

**JACKS**

- 7. Jack, side wind, 2000 lb ..... 13050
- 8. Jack, top wind, 2000 lb ..... 13051





Part No. 37097 Rev. A 10/09/2019

©2019 Generac Mobile Products, LLC  
All rights reserved.

Specifications are subject to change without notice.  
No reproduction allowed in any form without prior written consent  
from Generac Mobile Products, LLC.

**GENERAC** | **MOBILE**

Generac Mobile Products, LLC  
215 Power Drive, Berlin, WI 54923

[GeneracMobileProducts.com](http://GeneracMobileProducts.com) | 800-926-9768 | 920-361-4442